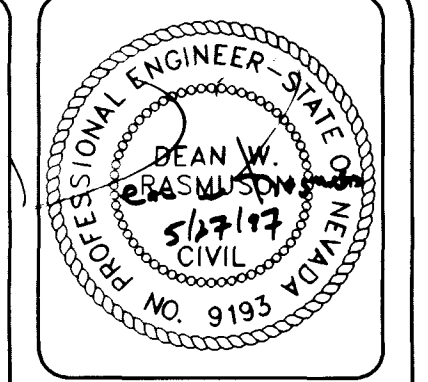


AVOID OVERHEAD POWER LINE CONTACT
Call before you Overhead.
 1-702-593-6111
 NEVADA POWER ENVIRONMENT AND SAFETY SERVICES DEPARTMENT

AVOID CUTTING UNDERGROUND UTILITY LINES ITS COSTLY
Call before you Dig.
 1-800-227-2600
 UNDERGROUND SERVICE ALERT (USA)



WALL LEGEND

- = FINISHED GRADE ELEVATION
- = TOP OF RETAINING WALL ELEVATION
- = BACK OF SIDEWALK ELEVATION
- = BOTTOM OF WALL ELEVATION (APPROX.)
- = LOT NUMBER
- = RETAINING WALL (DESIGN BY OTHERS)
- = BLOCK WALL (DESIGN BY OTHERS)
- = EXISTING RETAINING WALL
- = EXISTING BLOCK WALL
- = EXISTING CONTOUR
- = SCARP (2:1 MAX.)
- = PAD ELEVATION

BENCHMARK
 B.M. NO. 1LV9020NES
 FOUND BLM BRASS CAP AT THE INTERSECTION OF ELKHORN ROAD AND DURANGO DRIVE
 ELEVATION = 2528.49 NGVD 29 = 771.415 METERS = 2530.88 FEET NAVD 88

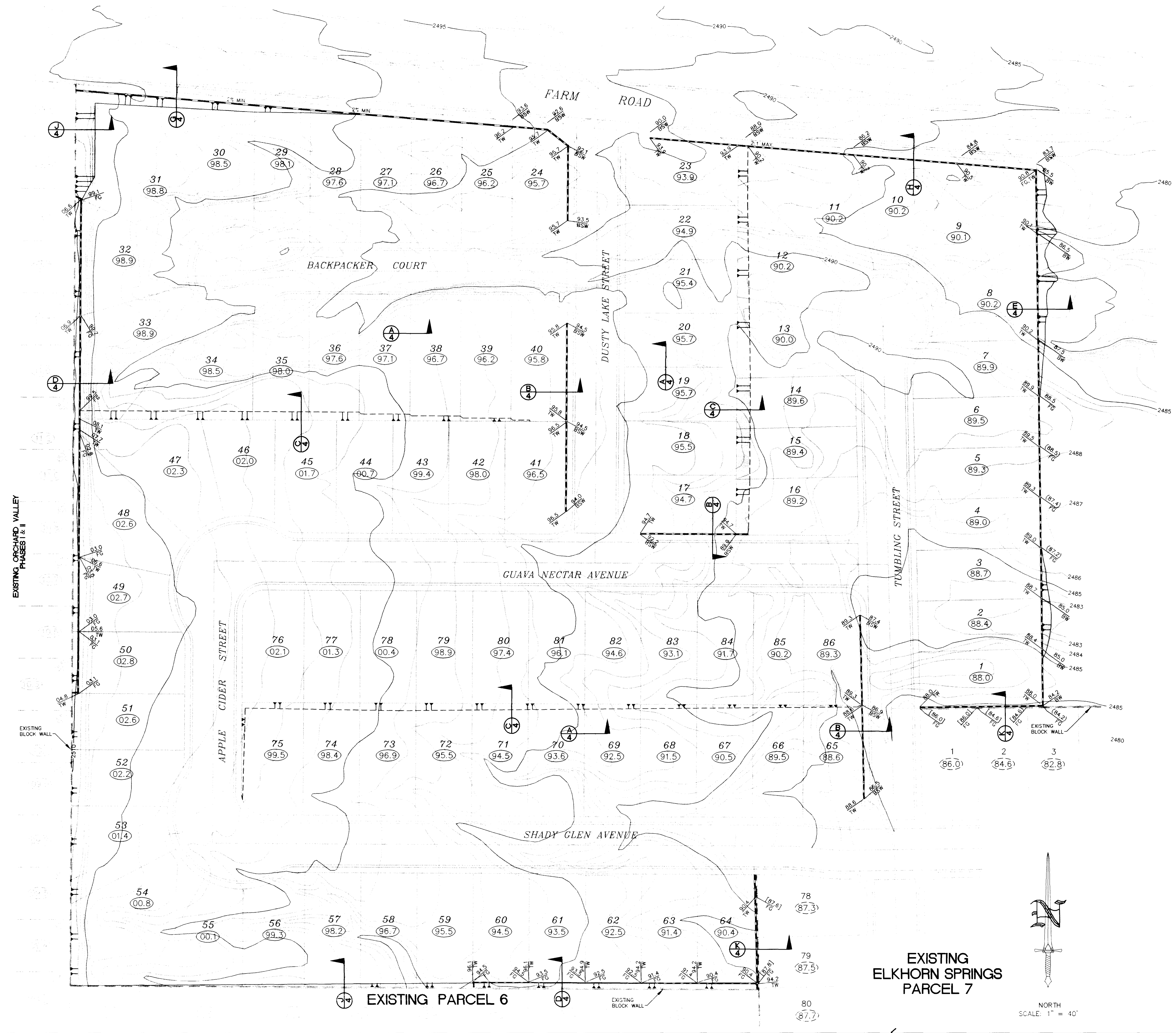
- NOTES:**
- FOOTING ELEVATIONS TO BE ESTABLISHED AT A MINIMUM ELEVATION OF EXISTING GRADE OF ADJACENT PROPERTY.
 - CONTRACTOR TO OBTAIN WRITTEN PERMISSION PRIOR TO CONSTRUCTION ON ADJACENT PROPERTY.
 - CONTRACTOR TO VERIFY LOCATION, HEIGHT, AND TYPE OF ALL WALLS PRIOR TO CONSTRUCTION.

DESIGNED BY: DRJ	DATE: 3/97
CHECKED BY: DRJ	REVISION: 001.700X
NO.	BY DATE

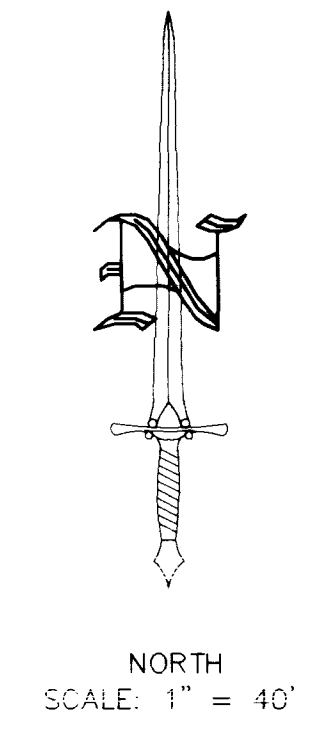
WATT HOMES - NEVADA DIVISION
 ELKHORN SPRINGS - PARCEL 2
 UNIT 1 & UNIT 2 - WALL PLAN

ORION ENGINEERING AND SURVEYING, INC.
 2700 CHANDLER AVENUE, SUITE B-1
 LAS VEGAS, NEVADA 89120
 (702) 739-5921 FAX (702) 739-5929

SHEET 10
 of 10



EXISTING ELKHORN SPRINGS PARCEL 7



4615

