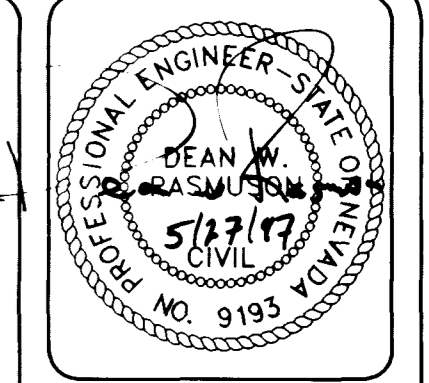


CLARK COUNTY (UNDEVELOPED)

Avoid overhead power line contact.
Call before you Overhead
 1-702-593-6111
 NEVADA POWER ENVIRONMENT AND SAFETY SERVICES DEPARTMENT

Avoid cutting underground utility lines. It's costly.
Call before you Dig.
 1-800-227-2600
 UNDERGROUND SERVICE ALERT (USA)



I CERTIFY THAT THIS GRADING PLAN IS IN CONFORMANCE WITH THE APPROVED DRAINAGE STUDY ON FILE AT THE CITY OF LAS VEGAS FOR THIS PROJECT.

Dean W. Rasmuson 5/27/92 DATE
 DEAN W. RASMUSON, P.E.

LEGAL DESCRIPTION

A PORTION OF THE SOUTHEAST QUARTER (SE 1/4) OF THE SOUTHWEST QUARTER (SW 1/4) OF SECTION 16, T.19S., R.60E., M.D.B. & M., CITY OF NORTH LAS VEGAS, CLARK COUNTY, NEVADA.

BENCHMARK

B.M. NO. 1LV9020NES
 FOUND ALUMINUM TAG AT THE INTERSECTION OF ELKHORN ROAD AND DURANGO DRIVE
 ELEVATION = 771.415 METERS = 2530.88 FT NAVD 88

LEGEND

- = FINISHED GRADE ELEVATION
- = TOP OF CURB ELEVATION
- = RATE & DIRECTION OF SLOPE
- = BLOCK WALL (DESIGN BY OTHERS)
- = RETAIN. WALL (DESIGN BY OTHERS)
- = SETBACK LINE
- [73.50] = GRADES PER APPROVED PLANS
- (73.50) = EXISTING GRADES
- (74.0) = PAD ELEVATION
- 35 = LOT NUMBER
- = EXISTING CONTOUR (1')
- = EXIST. EDGE OF PAVEMENT
- FF 74.8 = FINISH FLOOR ELEVATION
- = 2:1 MAX SCARP

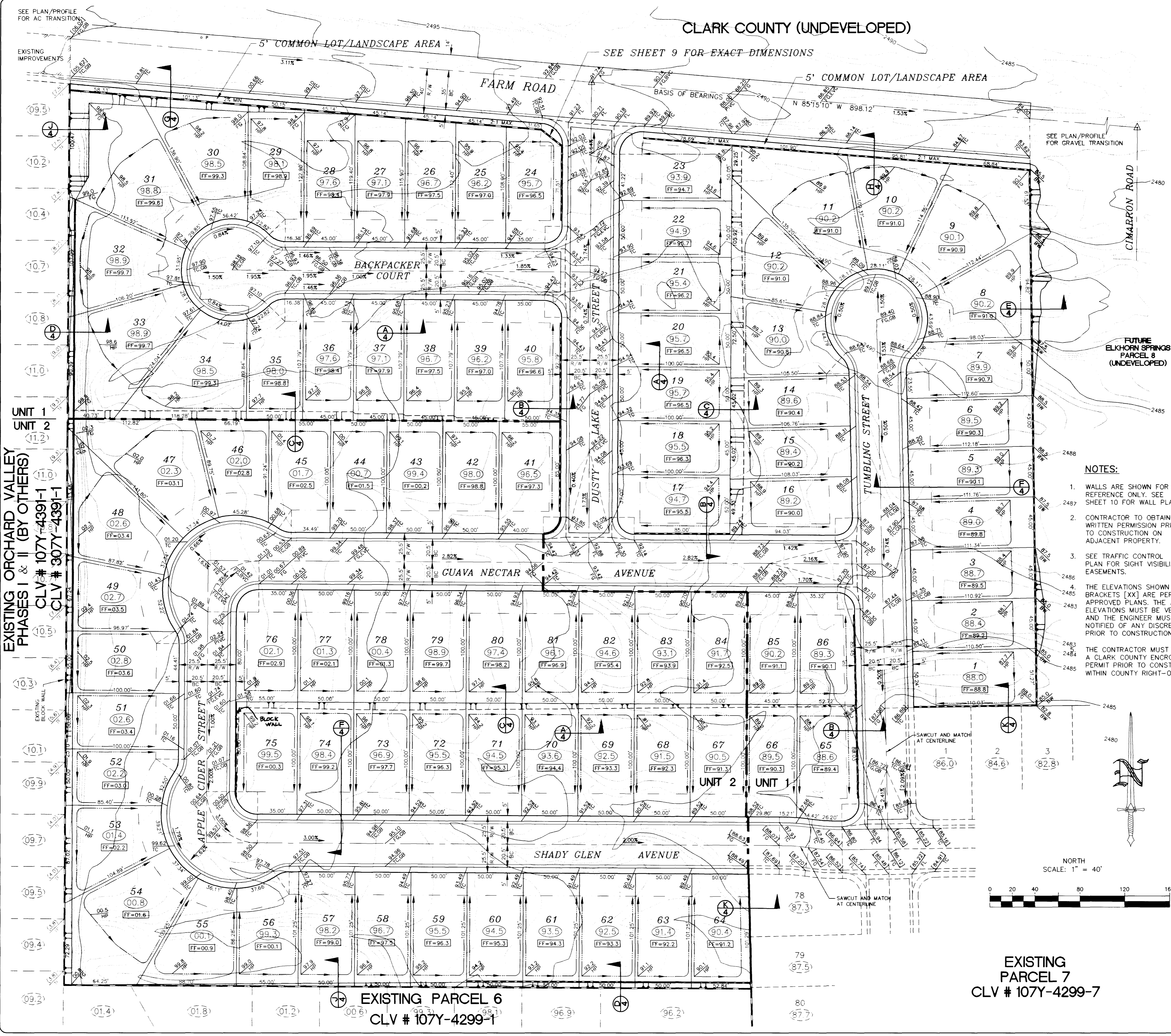
GRADING NOTES

- INDICATED GRADES OTHER THAN T.C., F.G. & GUTTER F.L. ARE ROUGH GRADES. (0.3' LOWER THAN FINISHED GRADE)
- THE ROUGH GRADING PLANS SHALL BE ON THE JOB SITE AT ALL TIMES. THE ROUGH GRADING SHALL BE FINISHED IN CONFORMANCE WITH THE LINES AND GRADES SHOWN ON THE PLANS. THE GRADING QUANTITIES ARE BASED ON THE ELEVATION AND DETAILS SHOWN ON THE PLANS. ANY DEVIATIONS FROM THE PLANS WILL RESULT IN QUANTITY CHANGES.
- CARE SHALL BE EXERCISED IN GRADING CORNER LOTS.
- ROUGH PAD ELEVATIONS SHALL BE GRADED TO WITHIN 0.1' OF THE PAD ELEVATIONS SHOWN ON THE PLANS. WHEN GRADING IS COMPLETE PER THE PLANS, THE CONTRACTOR SHALL NOTIFY THE OWNER SO THAT THE LOTS CAN BE INSPECTED. AT THE TIME THE OWNER SHALL ALSO DECIDE IF ANY ADDITIONAL DITCHES OR BERMS ARE REQUIRED. THE CONTRACTOR IS REQUESTED NOT TO REMOVE ANY OF HIS ROUGH GRADING EQUIPMENT UNTIL HE RECEIVES GRADING APPROVAL FROM THE OWNER.
- SOILS REPORT PREPARED BY GEOSOLS, INC. PROJECT NO. 683-LV DATED 10-31-96
- EARTH QUANTITIES:
 EXCAVATION: 38,745 C.Y.
 FILL: 20,662 C.Y.
 A) THE ABOVE QUANTITIES DO NOT REFLECT LOSSES DUE TO SUBSIDENCE OR SHRINKAGE.
 B) THE ABOVE QUANTITIES DO NOT REFLECT USING TYPE 1 GRAVEL BASE MATERIAL FOR STREET SECTIONS.
 C) THE ABOVE QUANTITIES DO NOT REFLECT ANY EARTHWORK WHICH MAY BE REQUIRED BY THE ENGINEER TO CONSTRUCT ADDITIONAL PROTECTIVE DITCHES OR BERMS NOT SHOWN ON THESE DRAWINGS.
- CONTRACTOR TO VERIFY ALL INDICATED SCARPS AND CONSTRUCTION SECTIONS PER SOILS REPORT.
- THE QUANTITIES DO NOT REFLECT THE TEMPORARY ACCESS ROAD CONSTRUCTED THROUGH THE SITE PER ELKHORN SPRINGS PARCEL 7.

NOTES:

- WALLS ARE SHOWN FOR REFERENCE ONLY. SEE SHEET 10 FOR WALL PLAN.
- CONTRACTOR TO OBTAIN WRITTEN PERMISSION PRIOR TO CONSTRUCTION ON ADJACENT PROPERTY.
- SEE TRAFFIC CONTROL PLAN FOR SIGHT VISIBILITY EASEMENTS.
- THE ELEVATIONS SHOWN WITH BRACKETS [XX] ARE PER APPROVED PLANS. THE ACTUAL ELEVATIONS MUST BE VERIFIED AND THE ENGINEER MUST BE NOTIFIED OF ANY DISCREPANCIES PRIOR TO CONSTRUCTION.

THE CONTRACTOR MUST OBTAIN A CLARK COUNTY ENCROACHMENT PERMIT PRIOR TO CONSTRUCTION WITHIN COUNTY RIGHT-OF-WAY.



SEE PLAN/PROFILE FOR AC TRANSITION

EXISTING IMPROVEMENTS

5' COMMON LOT/LANDSCAPE AREA

SEE SHEET 9 FOR EXACT DIMENSIONS

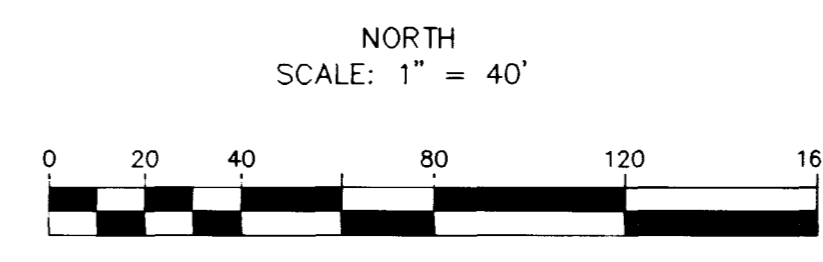
SEE PLAN/PROFILE FOR GRAVEL TRANSITION

EXISTING ORCHARD VALLEY PHASES I & II (BY OTHERS)
 CLV # 107Y-4391-1
 CLV # 307Y-4391-1

UNIT 1
 UNIT 2

EXISTING PARCEL 6
 CLV # 107Y-4299-1

EXISTING PARCEL 7
 CLV # 107Y-4299-7



DESIGNED BY: DRJ	DATE: 3/97
CHECKED BY: DRJ	DATE: 001.700X
NO.	REVISION
BY	DATE

WATT HOMES - NEVADA DIVISION
 ELKHORN SPRINGS - PARCEL 2
 GRADING PLAN
 UNIT 1 AND UNIT 2

NEVADA
 CITY OF LAS VEGAS

ORION ENGINEERING AND SURVEYING, INC.
 2700 CHANDLER AVENUE, SUITE B-1
 LAS VEGAS, NEVADA 89120
 (702) 739-5921 FAX (702) 739-5929

