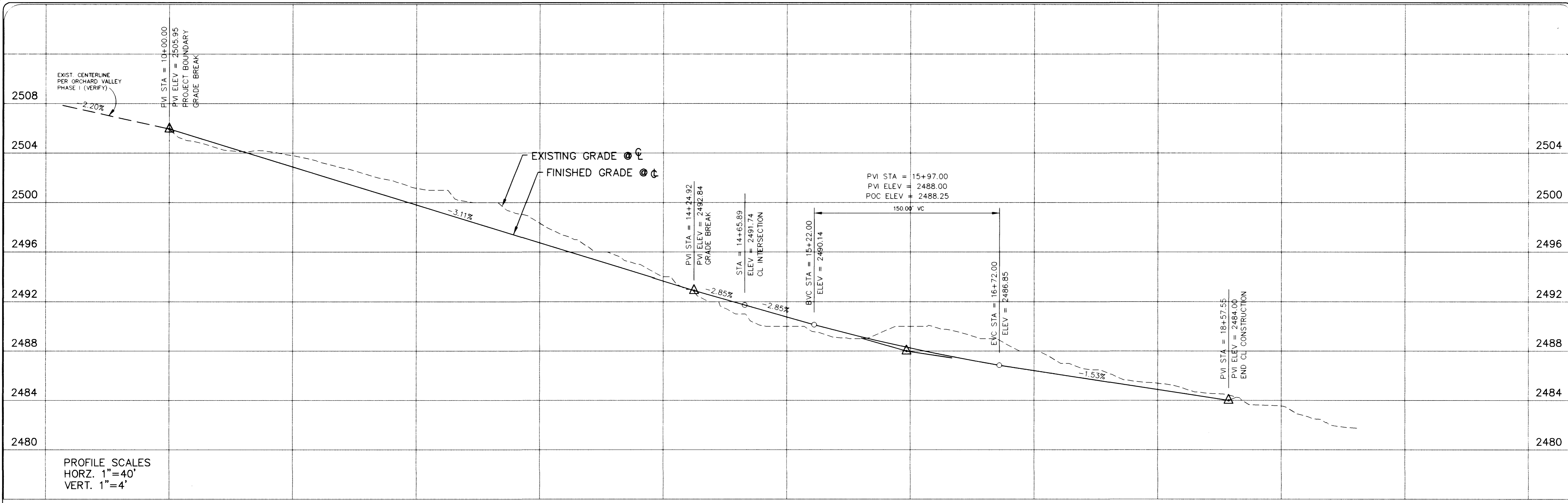


DESIGNED BY: DRJ	DRAWN BY: DRJ	DATE: 10/96
CHECKED BY: MS	JOB NUMBER: 001.700X	BY DATE
NO. 1577	REVISION: 1. OVERPAVE TO 2. OVERPAVE	DATE 3/21/13

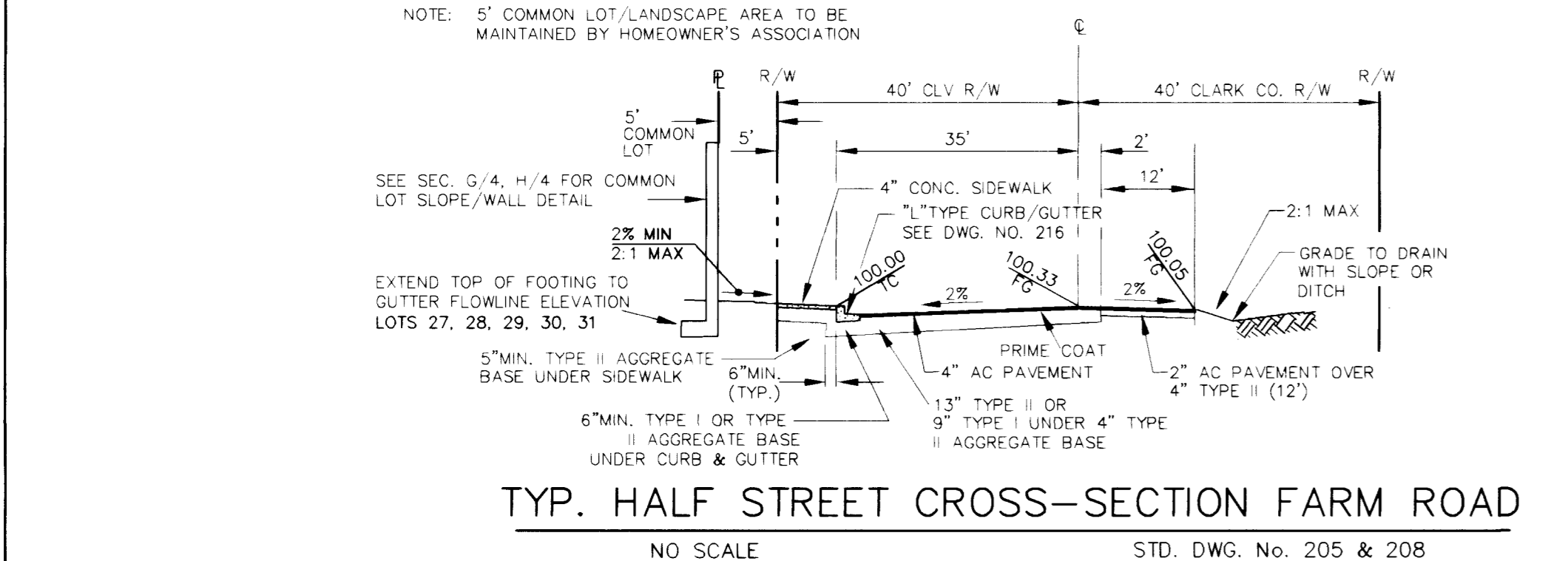
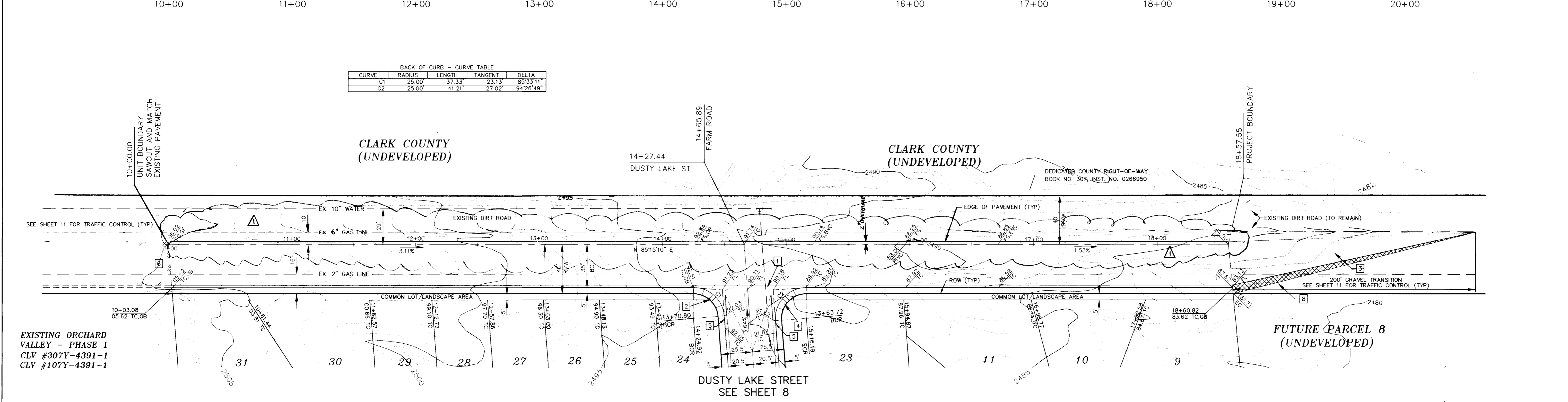
WATT HOMES - NEVADA DIVISION
 ELKHORN SPRINGS - PARCEL 2
 UNIT 1 - FARM ROAD
 CITY OF LAS VEGAS, NEVADA

ORION ENGINEERING AND SURVEYING, INC.
 2700 CHANDLER AVENUE, SUITE B-1
 LAS VEGAS, NEVADA 89120
 (702) 739-5921 FAX (702) 739-5929
Orion



BACK OF CURB - CURVE TABLE

CURVE	RADIUS	LENGTH	TANGENT	DELTA
C1	25.00'	37.33'	23.13'	85°33'11"
C2	25.00'	41.21'	27.02'	94°26'49"



- CONSTRUCTION NOTES
- INSTALL 8' WIDE PCC CROSS GUTTER PER STD. DWG. NO. 228.
 - INSTALL CASE 1 SIDEWALK RAMP PER STD. DWG. NO. 235, A = 8', B = 8'
 - CONTRACTOR TO GRADE 6" GRAVEL TRANSITION TO MATCH EXIST. GRAVEL ROAD
 - INSTALL CASE 1 SIDEWALK RAMP PER STD. DWG. NO. 235, A = 15', B = 4.5'
 - CONSTRUCT 10' TRANSITION FROM "L" CURB TO ROLL CURB (MAINTAIN FLOWLINE SLOPE)
 - MATCH EXISTING IMPROVEMENTS
 - CONSTRUCT 100' A.C. TRANSITION (14' TO 2')
 - CONSTRUCT SCARP TO MATCH EX. GROUND (3:1 MAX) (APPROXIMATE LIMITS SHOWN)

