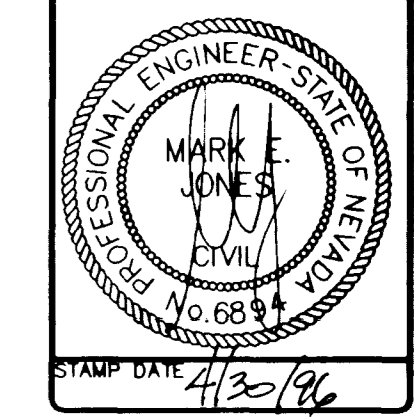
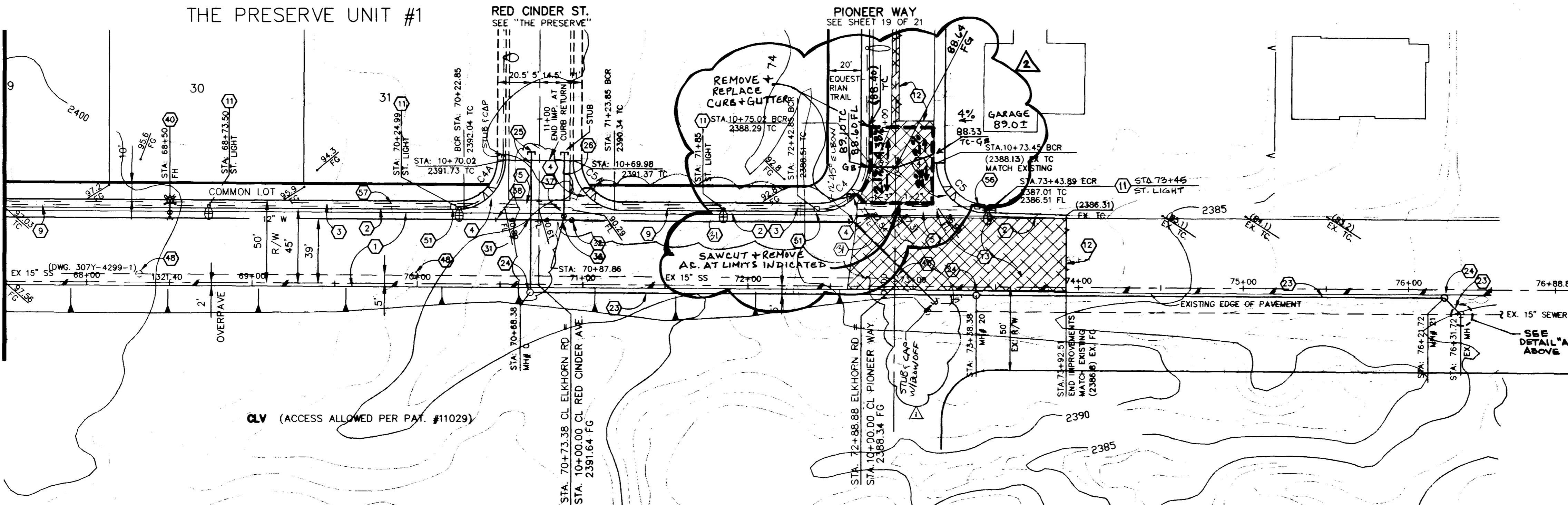


NO.	DATE	BY	REVISION
1	1/18/96	MH	DESIGN HUMP @ 74+00
2	4/12/96	MH	DESIGN HUMP @ 74+00



SOUTHWEST ENGINEERING
 LAND PLANNING • MAPING • DEVELOPMENT
 5405 W. VEGAS DRIVE
 LAS VEGAS, NEVADA 89108
 (702) 648-9700

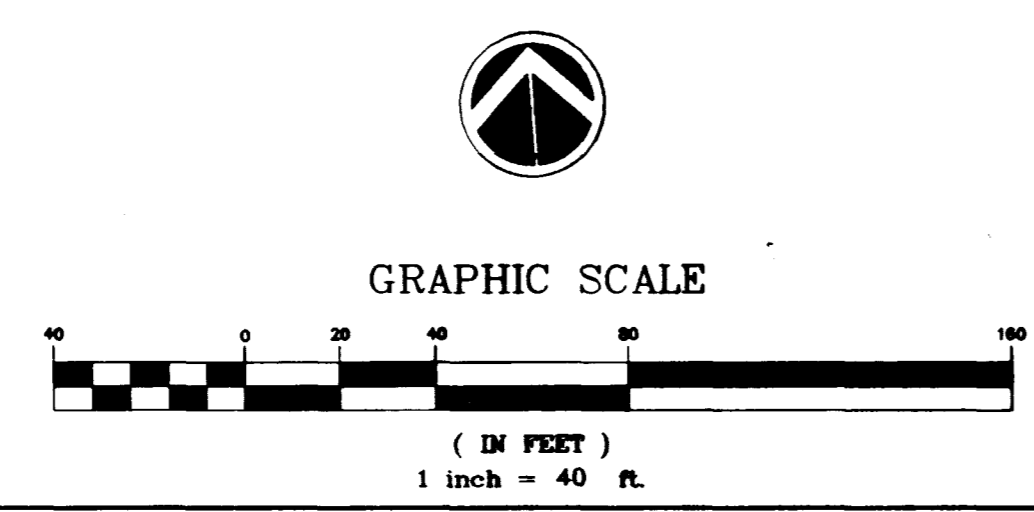


- CONSTRUCTION NOTES :**
- 1 4" A.C. OVER 4" TYPE II A.B. OVER 9" TYPE I A.B.
 - 2 24" "L" TYPE CURB AND GUTTER
 - 3 5' SIDEWALK
 - 4 WHEELCHAIR RAMP
 - 5 8' WIDE CROSS GUTTER
 - 6
 - 7
 - 8
 - 9
 - 10
 - 11 2" STREET LIGHT CONDUIT/ELKHORN & PIONEER
 - 12 250W HPS STREET LIGHT/ELKHORN
 - 13 100W HPS STREET LIGHT/RED CINDER, PIONEER WAY
 - 14 SAWCUT AND MATCH EXISTING A/C
 - 15 REMOVE EXISTING VALLEY GUTTER, CURB, AND PAVEMENT
 - 16 15" SEWER MAIN (PUBLIC)
 - 17 4' DIA. SEWER MANHOLE
 - 18 15" SEWER MAIN, STUB & CAP
 - 19
 - 20 8" PVC WATER MAIN
 - 21
 - 22 12" PVC WATER MAIN
 - 23 12" GATE VALVE
 - 24 12"x 8" TEE w/ THRUST BLOCK
 - 25 8" GATE VALVE
 - 26 CLOSE VALVE, REMOVE CAP & B.O. AND CONNECT TO EXISTING.
 - 27 FIRE HYDRANT ASSY.
 - 28
 - 29 ADJUST EXISTING MANHOLE TO GRADE
 - 30
 - 31 NO. 3 1/2 PULLBOX
 - 32
 - 33 NO. 5 PULLBOX
 - 34
 - 35 3" INTERCONNECT CONDUIT

BENCHMARK
 PROJECT DATUM=NGVD29 NO.14, STATION 1LV9021N6 3" BRASS CAP USC & GS BM #113 3/4 MILE NORTH OF 1LV902BNE6, 50' (FT.) EAST OF OLD RAILROAD BED ELEVATION = 2452.515 EQUATION ELEVATION = 2452.515 + 2.401' = 2454.916 (TO NAVD88) (747.5266m + 0.7318m = 748.2584m)

NOTICE TO CONTRACTOR !
 EXISTING UTILITY LOCATIONS SHOWN HEREON ARE APPROXIMATE ONLY. IT SHALL BE THE CONTRACTOR'S RESPONSIBILITY TO DETERMINE THE EXACT VERTICAL AND HORIZONTAL LOCATION OF ALL EXISTING UNDERGROUND UTILITIES PRIOR TO COMMENCING CONSTRUCTION. NO REPRESENTATION IS MADE THAT ALL EXISTING UTILITIES ARE SHOWN HEREON. THE ENGINEER ASSUMES NO RESPONSIBILITY FOR UTILITIES NOT SHOWN OR UTILITIES NOT SHOWN IN THEIR PROPER LOCATION.

AVOID CUTTING UNDERGROUND UTILITIES. IT'S COSTLY.
CALL before you Dig
 1-800-227-2600
 UNDERGROUND SERVICE (USA)



BACK OF CURB CURVE TABLE

CURVE	RADIUS	DELTA	TANGENT	LENGTH
C4	30.00'	90°01'25"	30.01'	47.14'
C5	30.00'	89°58'35"	29.99'	47.11'
C4A	30.00'	90°01'25"	30.01'	47.14'
C5A	30.00'	89°58'35"	29.99'	47.11'

S/W RAMP DATA

S/W RAMP DATA	S/W RAMP DATA
A = 4.5'	A = 4.5'
B = 12.0'	B = 12'
Z = 2.75'	Z = 2.75'
A = 8'	A = 8'
B = 8'	B = 8'
Y = 2.75'	Y = 2.75'

APPROVED FOR CONSTRUCTION
 1/2 11/12 4.12.96
 LUVVWD DATE 5/12/96

STREET/SEWER PLAN & PROFILE
 ELKHORN ROAD
ELKHORN SPRINGS
 PHASE II

TITLE PROJECT

WORK ORDER NO: 950925

DESIGN BY: M. JONES

DATE: 04/12/96

SCALE: 1" = 40'

CADFILE: ELKRDP.DWG

SHEET 6 OF 21 SHEETS

