

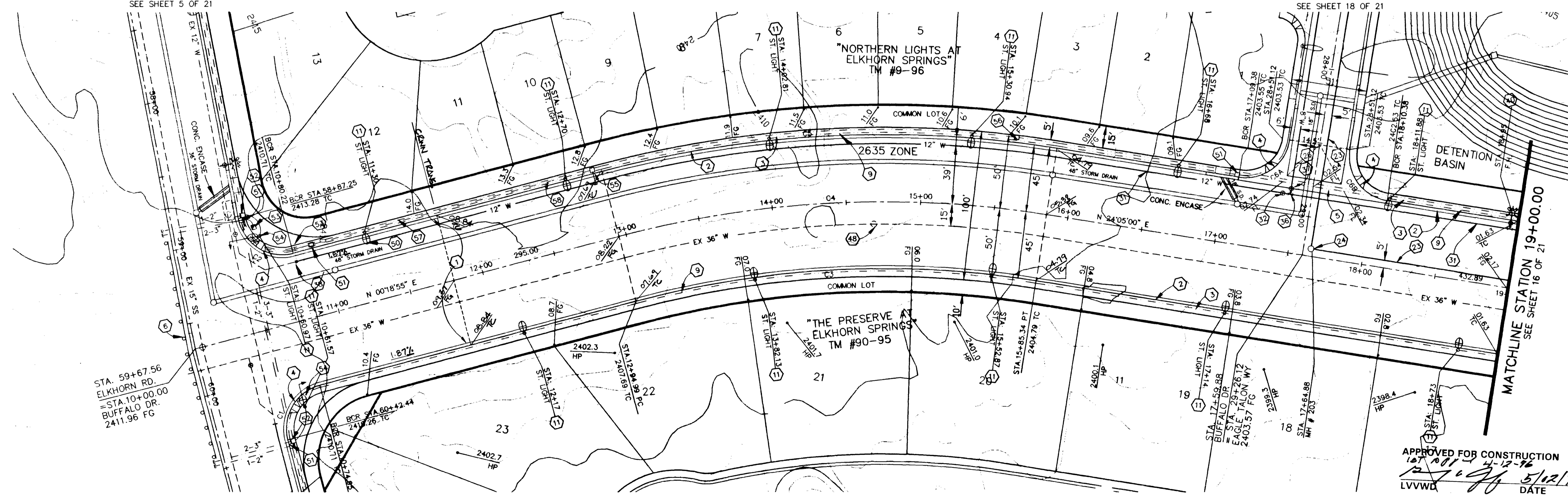
SEE STORM DRAIN PLANS FOR LOCATION AND CONSTRUCTION OF STORM DRAIN FACILITIES.

- CONSTRUCTION NOTES :**
- 1 4" A.C. OVER 4" TYPE II A.B. OVER 9" TYPE I A.B.
  - 2 24" "L" TYPE CURB AND GUTTER
  - 3 5' SIDEWALK
  - 4 WHEELCHAIR RAMP
  - 5 8" WIDE CROSS GUTTER
  - 6 8" BARRICADE TYPE III
  - 9 2" STREET LIGHT CONDUIT
  - 11 250W HPS STREET LIGHT
  - 23 8" SEWER MAIN (PUBLIC)
  - 24 4" DIA. SEWER MANHOLE
  - 26 8" PVC WATER MAIN
  - 31 12" PVC WATER MAIN
  - 32 12" GATE VALVE
  - 36 12"x 8" TEE w/ THRUST BLOCK
  - 37 8" GATE VALVE
  - 38 CLOSE VALVE, REMOVE CAP & B.O. AND CONNECT TO EXISTING
  - 40 FIRE HYDRANT ASSY.
  - 48 ADJUST EX. MANHOLE TO GRADE
  - 50 PHOTO EYE
  - 51 NO. 3-1/2 PULLBOX
  - 52 NO. 7 PULLBOX
  - 53 200 A METER PEDESTAL W/ 2 - 2p-60 AMP CIRCUIT BREAKER 1 - 1p15 AMP CIRCUIT BREAKER 2 - 2p 60 AMP CONTACTORS 1 - BI-PASS SWITCH PER CONTACTORS
  - 54 "L" FOUNDATION W/ ADAPTER PLATE TO STAND POLE
  - 55 NO. 3-1/2 PULLBOX W/ STUB UNDER CURB & GUTTER
  - 56 NO. 5 PULLBOX
  - 57 3" INTERCONNECT CONDUIT
  - 58 2" FUTURE LOOP

**TYPICAL TRAFFIC/ STREET LIGHT DETAIL**

NO SCALE

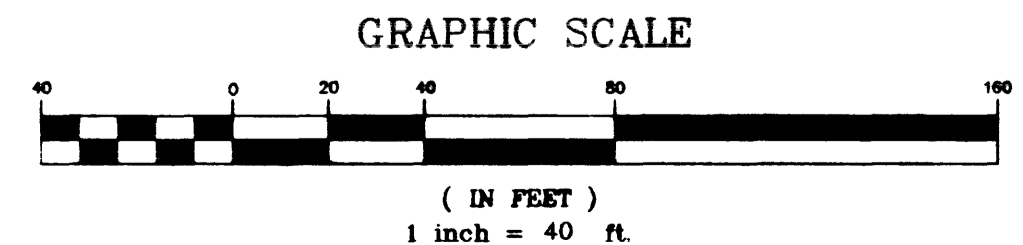
10+00 11+00 12+00 13+00 14+00 15+00 16+00 17+00 18+00 19+00



**BUFFALO DRIVE**

**NOTICE TO CONTRACTOR !**  
EXISTING UTILITY LOCATIONS SHOWN HEREON ARE APPROXIMATE ONLY. IT SHALL BE THE CONTRACTOR'S RESPONSIBILITY TO DETERMINE THE EXACT VERTICAL AND HORIZONTAL LOCATION OF ALL EXISTING UNDERGROUND UTILITIES PRIOR TO COMMENCING CONSTRUCTION. NO REPRESENTATION IS MADE THAT ALL EXISTING UTILITIES ARE SHOWN HEREON. THE ENGINEER ASSUMES NO RESPONSIBILITY FOR UTILITIES NOT SHOWN OR UTILITIES NOT SHOWN IN THEIR PROPER LOCATION.

AVOID CUTTING UNDERGROUND UTILITIES. IT'S COSTLY.  
**CALL before you Dig**  
1-800-227-2600  
UNDERGROUND SERVICE (USA)



**BENCHMARK**

PROJECT DATUM=NGVD29 NO.14, STATION 1LV9021N6 3" BRASS CAP USC & GS BM #113 3/4 MILE NORTH OF 1LV9028NNE6, 50' (FT.) EAST OF OLD RAILROAD BED ELEVATION = 2452.515 EQUATION ELEVATION = 2452.515 + 2.401' = 2454.916 (TO NAVD88) (747.5266m + 0.7318m = 748.2584m)

S/W RAMP DATA		S/W RAMP DATA	
A	C2	A	C6B
A = 8.0'	A = 21.5'	A = 8.0'	A = 9.5'
B = 8.0'	B = 4.5'	B = 8.0'	B = 4.5'
Z = 2.75'	Z = 2.75'	Y = 2.75'	Y = 2.75'

CENTERLINE & BACK OF CURB TABLE				
CURVE	RADIUS	DELTA	TANGENT	LENGTH
C1	30.00'	89°58'03"	29.98'	47.11'
C2	30.00'	93°51'25"	32.09'	49.14'
C3	655.00'	23°46'05"	137.84'	271.72'
C4	700.00'	23°46'05"	147.31'	290.38'
C5	745.00'	23°46'05"	156.78'	309.05'
C6	30.00'	90°00'00"	30.00'	47.12'

REVISION DESCRIPTION

DATE BY APPROV

NO.

PROFESSIONAL ENGINEER STATE OF NEVADA  
MARK E. JONES  
CIVIL  
NO. 6884

STAMP DATE 4/30/96

SOUTHWEST ENGINEERING  
LAND PLANNING • MAPPING • DEVELOPMENT  
5426 W. VEGAS DRIVE  
LAS VEGAS, NEVADA 89108  
(702) 648-9700

TITLE PROJECT  
**STREET/SEWER PLAN & PROFILE**  
BUFFALO DRIVE  
**ELKHORN SPRINGS**  
PHASE II

WORK ORDER NO. 950925  
DESIGN BY E. VIRREY  
DATE 04/16/96  
SCALE: 1" = 40'  
CADD FILE BUFFPP-B.DWG  
SHEET 15 OF 21 SHEETS