

06/01/11

21653

# DEER SPRINGS RANCH - UNIT 1

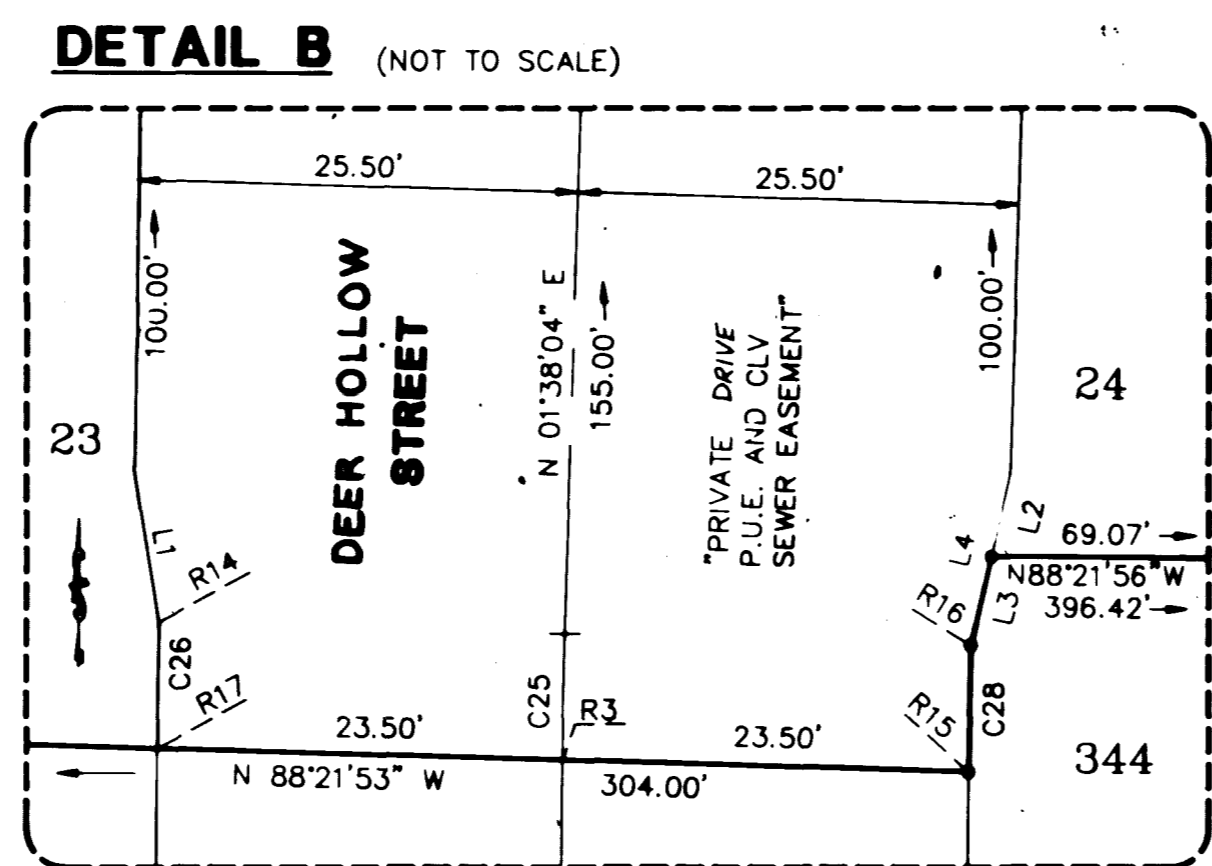
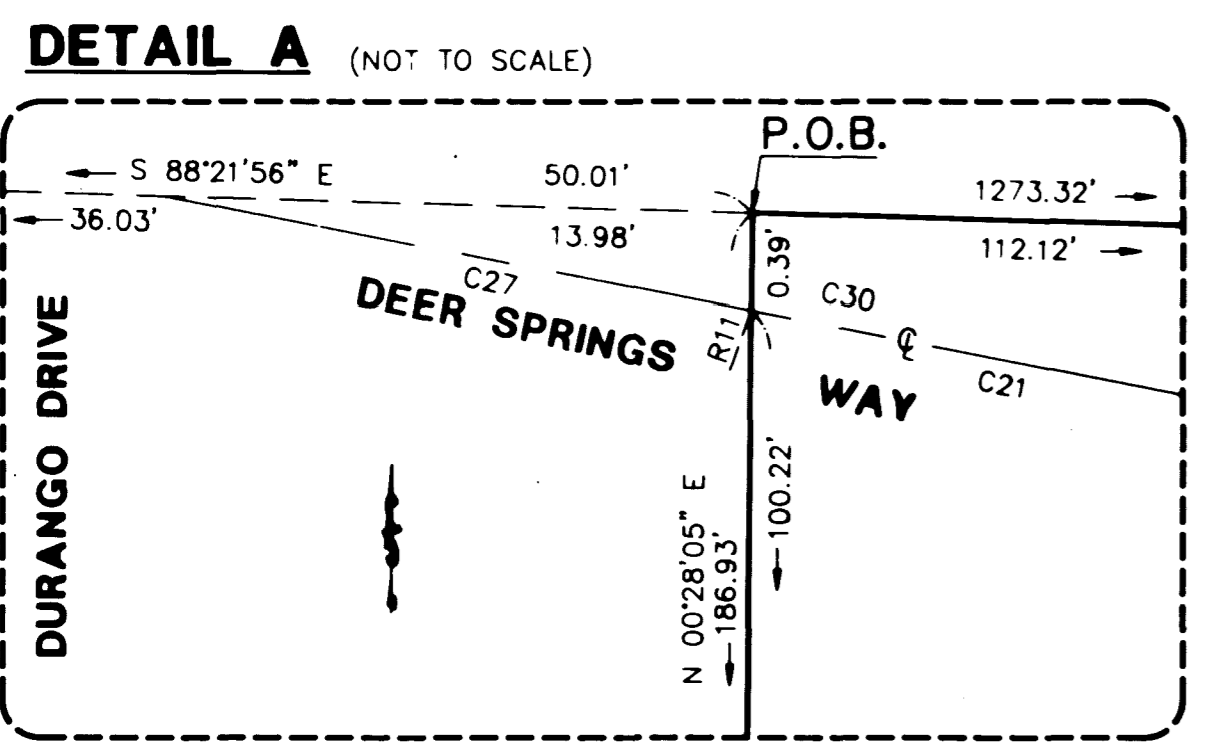
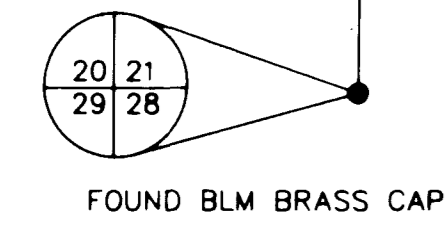
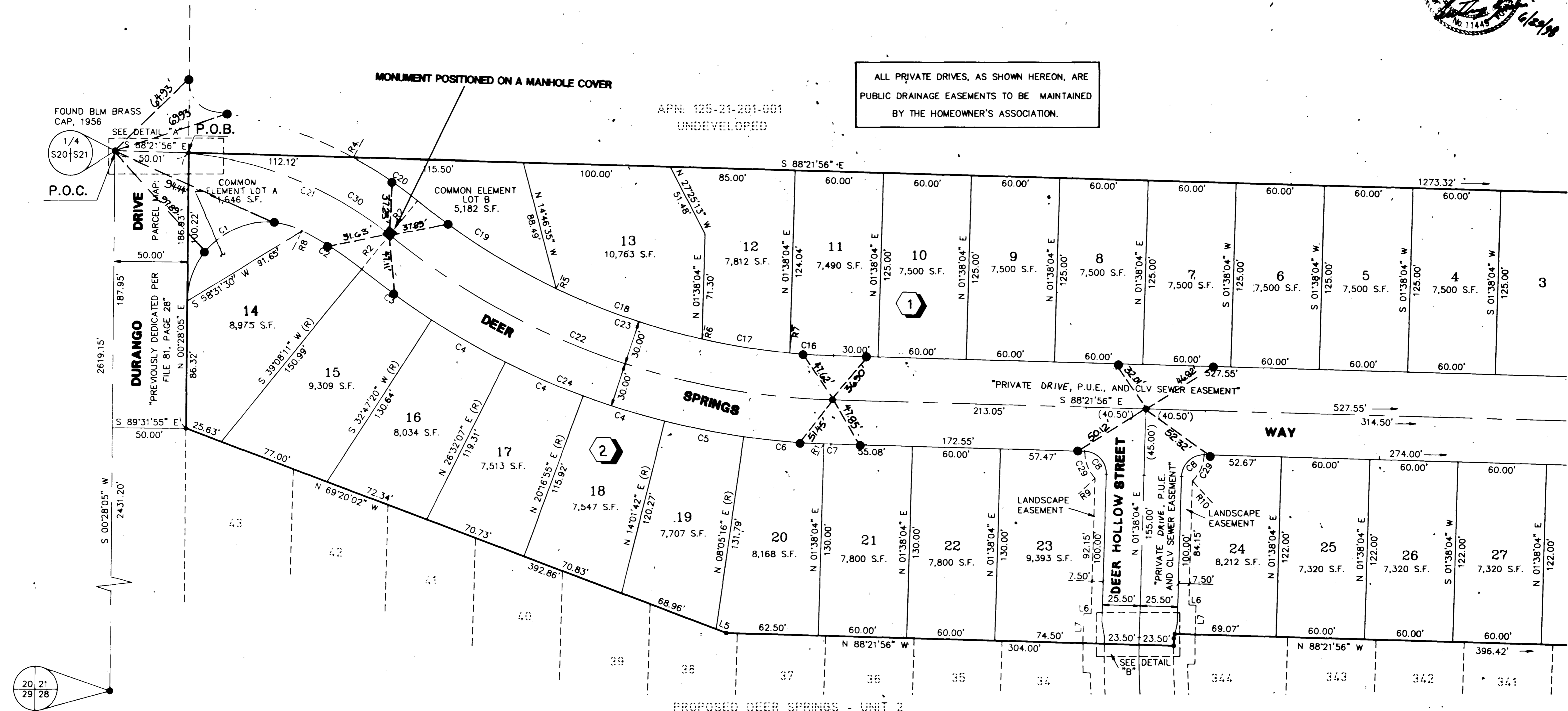
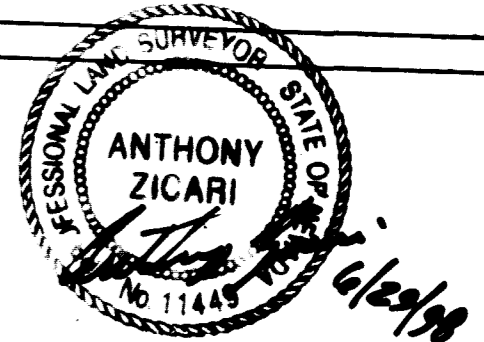
(A COMMON INTEREST COMMUNITY)

BEING A PORTION OF THE WEST HALF ( W 1/2 ) OF THE SOUTHWEST QUARTER ( SW 1/4 ) OF SECTION 21,  
TOWNSHIP 19 SOUTH, RANGE 60 EAST, M.D.M., CITY OF LAS VEGAS, CLARK COUNTY, NEVADA

## MONUMENTATION TIE MAP

I, ANTHONY ZICARI, A PROFESSIONAL LAND SURVEYOR IN THE STATE OF NEVADA, DO HEREBY CERTIFY THAT THE MONUMENTS HAVE BEEN SET AND THE TIE DISTANCE ESTABLISHED AS SHOWN HEREON. THIS SURVEY WAS COMPLETED ON

ANTHONY ZICARI  
NEVADA CERTIFICATION NO. 11449



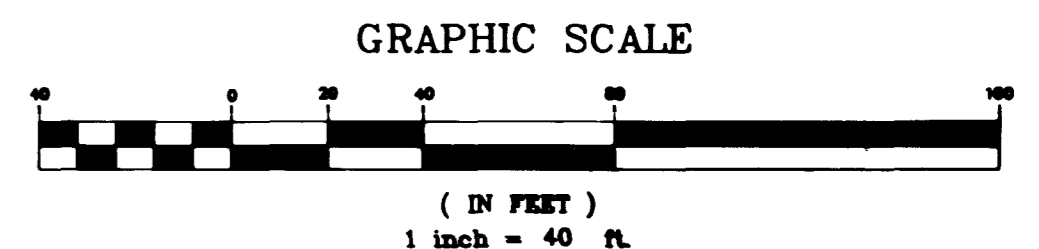
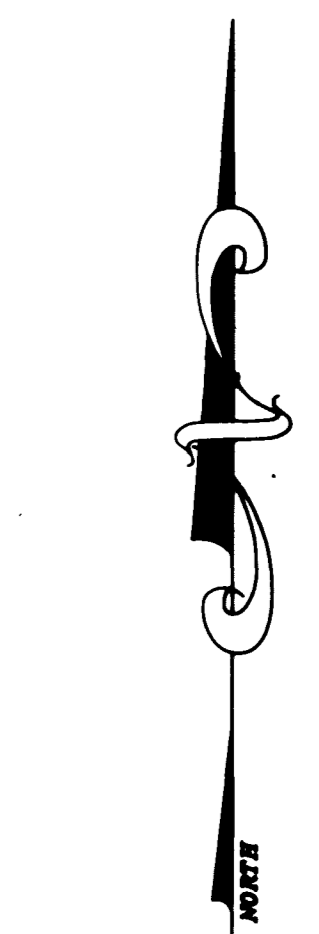
### LEGEND

- P.O.C. POINT OF COMMENCEMENT
- P.O.B. POINT OF BEGINNING
- EASEMENT LINE
- BOUNDARY LINE
- LOT LINE
- STREET CENTERLINE
- SET NAIL & BRASS TAG "VTN PLS 11449" OR SAWCUT TOP OF CURB ON THE PROLONGATION OF PROPERTY LINES PER NOTE 1 THIS SHEET.
- SET 5/8" REBAR AND AL. CAP "VTN PLS 11449"
- ⊙ FOUND MONUMENT AS DESCRIBED
- 24 LOT NUMBER / RESIDENTIAL LOTS = 33  
COMMON ELEMENT LOTS = 4  
TOTAL LOTS = 37
- C25 CURVE NUMBER
- L22 COURSE NUMBER
- R19 RADIAL LINE NUMBER
- (R) RADIAL
- 1 BLOCK NUMBER
- S.F. SQUARE FEET
- (PROD) PRODUCED LINE
- P.U.E. PUBLIC UTILITY EASEMENT

ALL LANDSCAPE EASEMENTS SHOWN HEREON ARE TO BE PRIVATELY MAINTAINED BY THE HOMEOWNER'S ASSOCIATION.

### NOTES:

1. ALL REAR LOT CORNERS SHALL BE SET WITH A NAIL AND BRASS TAG P.L.S. 11449 ON BLOCK WALL AND ALL FRONT OF SIDE LOT CORNERS ADJOINING RIGHT-OF-WAY SHALL BE MARKED BY THE SAWCUTTING OF THE BACK OF CURBS ON THE PROLONGATION OF THE PROPERTY LINES.
2. DIRECT VEHICULAR ACCESS TO DURANGO DRIVE FROM ABUTTING LOTS IS PROHIBITED.
3. SEE SHEET 3 FOR CURVE, COURSE, AND RADIAL LINE TABLES.



ACT	DATE	BY	REVISION

W.O. 4884-1  
SHEET 2 OF 3  
LYZ

058-4478-1

Book 76 Page 58

FOR CONTINUATION SEE SHEET 3

