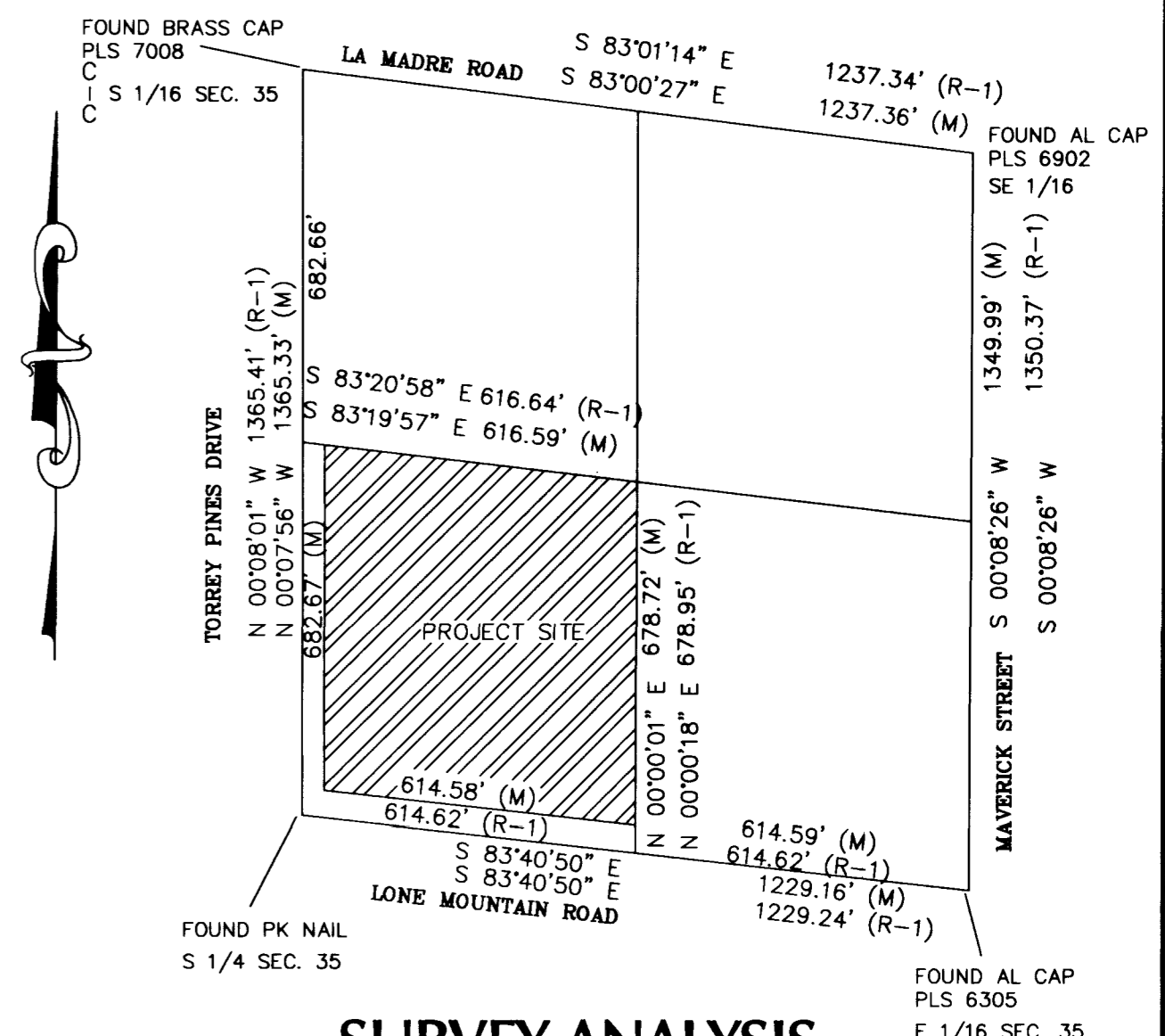
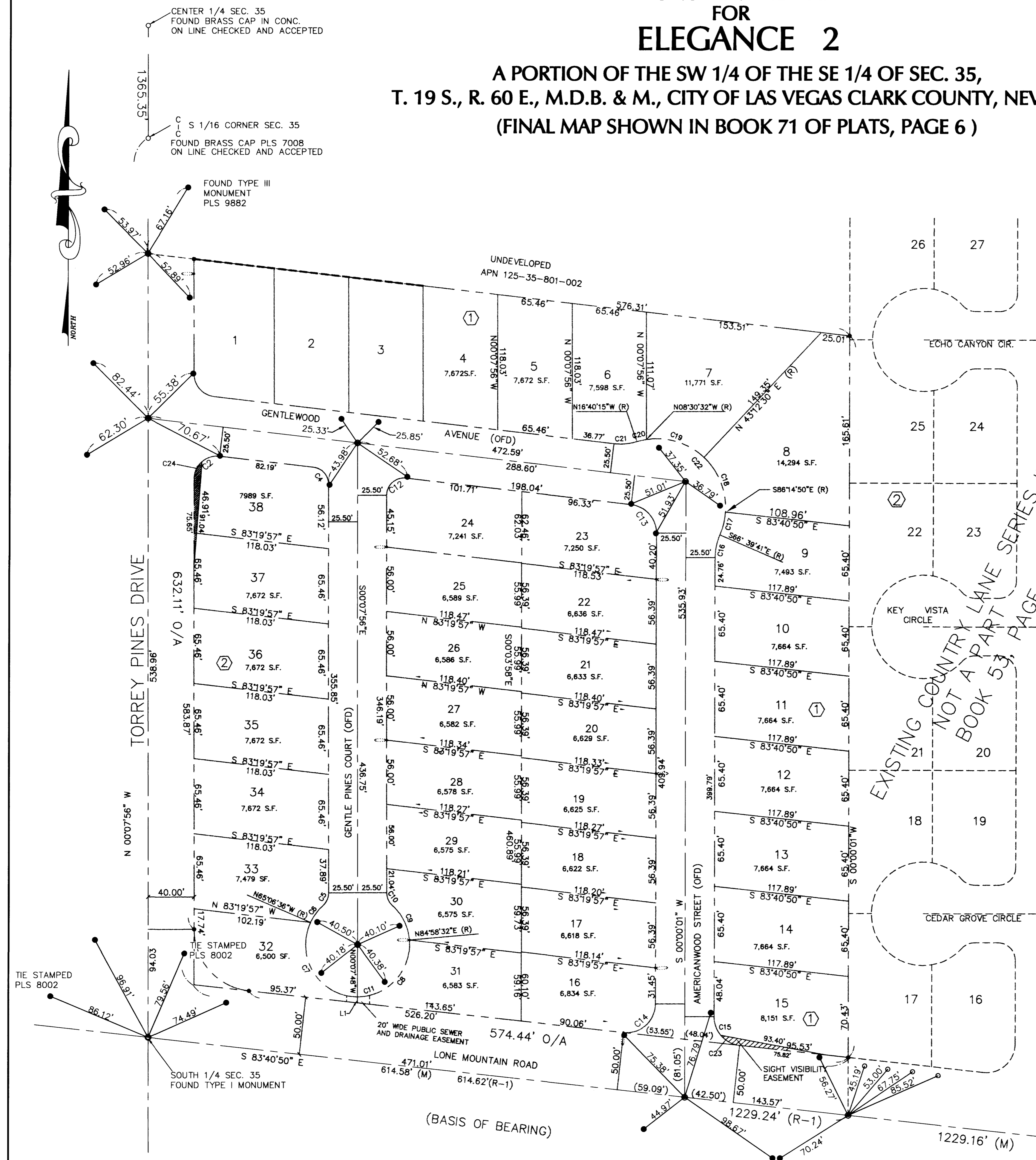


MONUMENT TIE MAP FOR ELEGANCE 2

A PORTION OF THE SW 1/4 OF THE SE 1/4 OF SEC. 35,
T. 19 S., R. 60 E., M.D.B. & M., CITY OF LAS VEGAS CLARK COUNTY, NEVADA
(FINAL MAP SHOWN IN BOOK 71 OF PLATS, PAGE 6)



LEGEND

- FOUND TYPE III MONUMENT P.L.S. 9882 WITH TIES. CHECKED AND ACCEPTED.
- FOUND REBAR AND AL. CAP P.L.S. 9882
- FOUND EXISTING BRASS CAP STAMPED 6902 WITH TIES.
- L4 LINE SEGMENT NUMBER
- C23 CURVE SEGMENT NUMBER
- 17** LOT NUMBER
- G** BLOCK LETTER
- BOUNDARY LINE
- - - CENTERLINE
- P.O.B. POINT OF BEGINNING
- S.F. SQUARE FEET

SURVEY ANALYSIS

OF
SW 1/4 SE1/4 SEC. 35

LINE	DIRECTION	DISTANCE
L1	N00°07'56"W	5.27'

CURVE	RADIUS	LENGTH	TANGENT	DELTA
C1	54.00'	78.74'	48.24'	83°32'54"
C2	20.00'	33.79'	22.53'	96°47'59"
C3	20.00'	29.04'	17.76'	83°12'01"
C4	15.00'	21.78'	13.32'	83°12'01"
C5	15.00'	12.56'	6.67'	47°58'39"
C6	45.50'	18.23'	9.24'	22°57'19"
C7	45.50'	91.34'	71.45'	115°01'12"
C8	45.50'	75.36'	49.56'	94°53'40"
C9	45.50'	34.22'	17.96'	43°05'07"
C10	15.00'	12.56'	6.67'	47°58'39"
C11	45.50'	219.14'	41.00'	275°57'18"
C12	15.00'	25.34'	16.89'	96°47'59"
C13	25.00'	36.36'	22.25'	83°19'09"
C14	25.00'	42.03'	27.92'	96°19'09"
C15	25.00'	36.51'	22.38'	83°40'51"
C16	50.00'	20.37'	10.33'	23°20'18"
C17	60.00'	20.51'	10.36'	19°35'09"
C18	60.00'	52.93'	28.33'	50°32'40"
C19	60.00'	54.16'	29.08'	51°43'02"
C20	60.00'	8.55'	4.28'	08°09'42"
C21	50.00'	20.37'	10.33'	23°20'18"
C22	60.00'	136.15'	128.70'	130°00'33"
C23	25.00'	19.13'	10.06'	43°51'03"
C24	20.00'	17.15'	9.14'	49°07'52"

SURVEYOR'S CERTIFICATE

I, JAYNE E. LEAVITT, A PROFESSIONAL LAND SURVEYOR REGISTERED IN THE STATE OF NEVADA, ACTING AS AN AGENT FOR SOUTHWEST ENGINEERING, DO HEREBY CERTIFY THAT THE MONUMENTS ARE SET AND THE TIE DISTANCES ARE CORRECT AS SHOWN HEREON.

Jayne E. Leavitt, PLS
JAYNE E. LEAVITT, PLS
NEVADA CERTIFICATE NO. 8002

