

960723

MONUMENTATION TIE MAP FOR:

01382

ELKHORN SPRINGS - PARCEL 5B

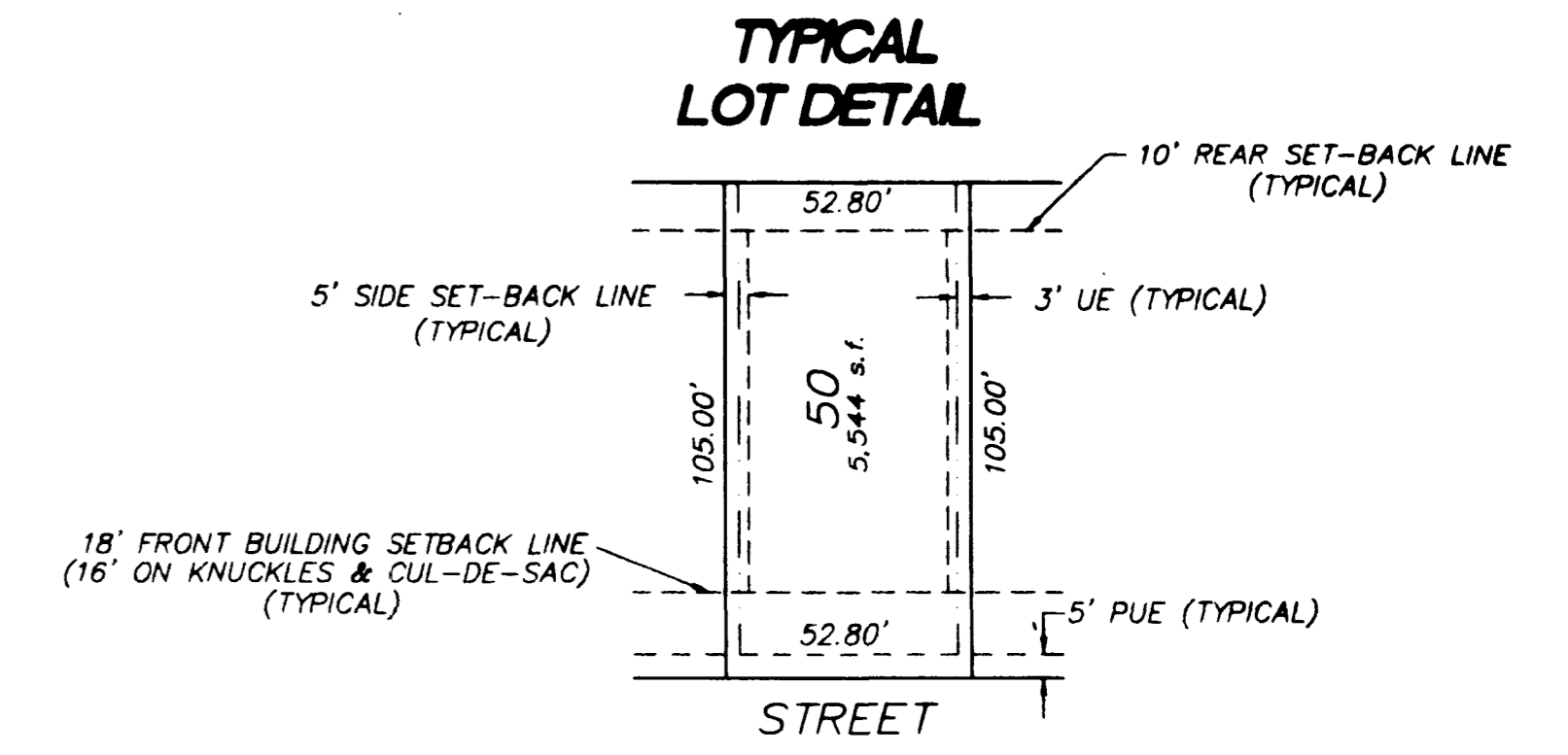
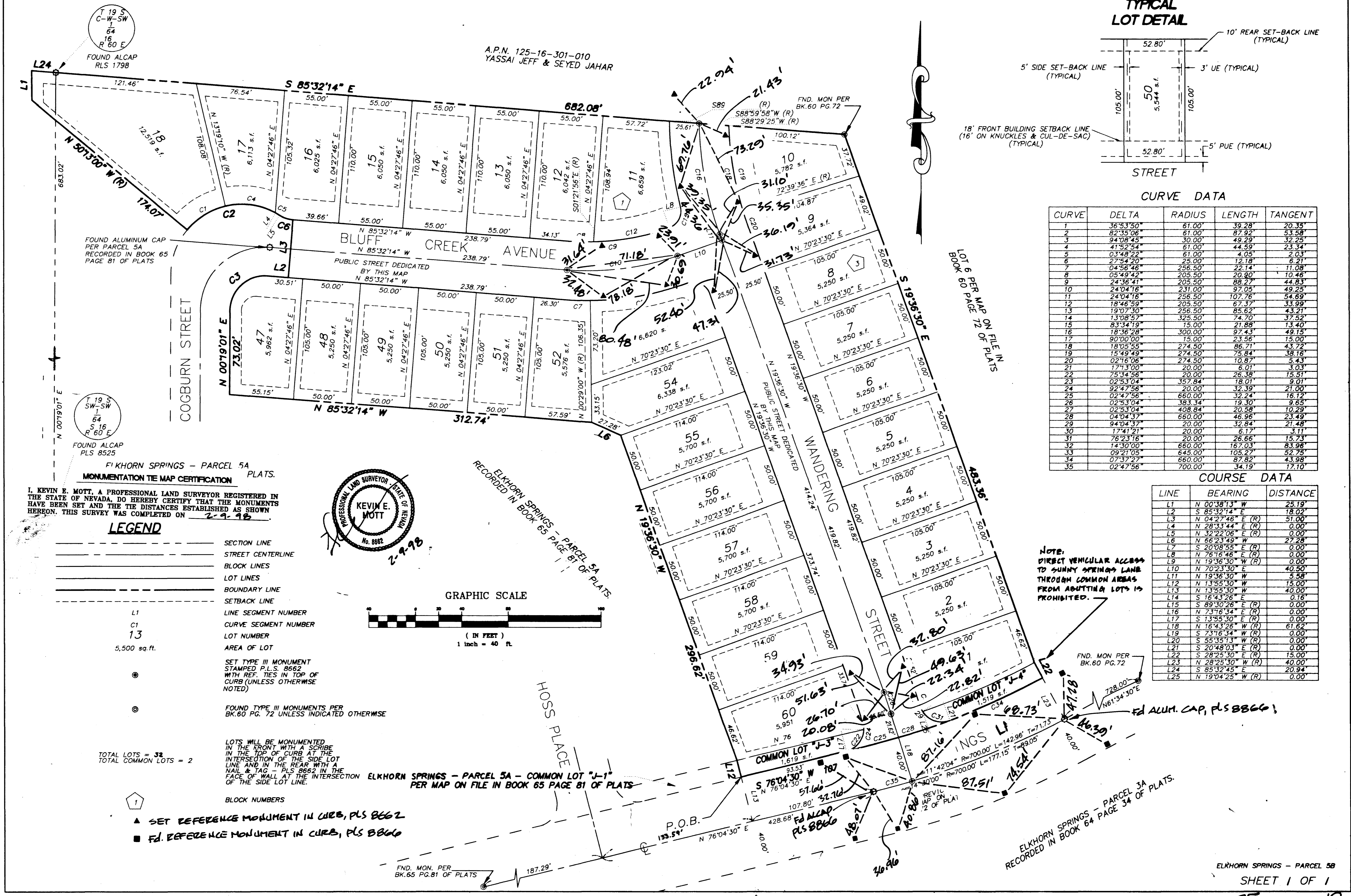
A SUBDIVISION

LOT 5 AS SHOWN ON BOUNDARY LINE ADJUSTMENT ON FILE IN FILE 77 PAGE 12 OF SURVEYS

RECORDED IN THE

CLARK COUNTY RECORDER'S OFFICE, LYING WITHIN SECTION 16, OF TOWNSHIP 19 SOUTH, RANGE 60 EAST, M.D.M., CITY

OF LAS VEGAS, CLARK COUNTY, NEVADA.

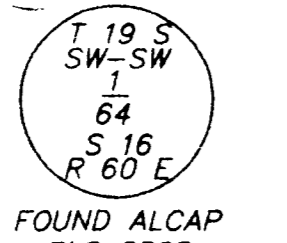
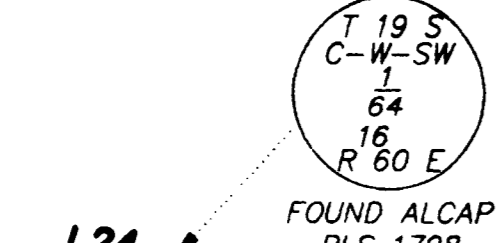


CURVE DATA

CURVE	DELTA	RADIUS	LENGTH	TANGENT
1	36°53'59"	61.00'	39.28'	20.35'
2	82°15'06"	61.00'	87.92'	43.58'
3	94°08'43"	30.00'	49.29'	32.25'
4	41°52'54"	61.00'	44.59'	23.34'
5	03°48'28"	61.00'	4.05'	2.03'
6	27°54'20"	25.00'	12.18'	6.21'
7	04°56'46"	256.50'	22.14'	11.08'
8	05°49'42"	205.50'	20.80'	10.46'
9	24°36'41"	205.50'	88.27'	44.83'
10	24°10'18"	231.00'	97.05'	49.25'
11	24°04'16"	256.50'	107.76'	54.69'
12	18°46'59"	205.50'	67.37'	33.99'
13	19°07'30"	256.50'	85.62'	43.21'
14	13°08'57"	325.50'	74.70'	37.52'
15	83°34'19"	15.00'	21.88'	13.40'
16	18°36'28"	300.00'	97.43'	49.15'
17	90°00'00"	15.00'	23.56'	15.00'
18	18°05'55"	274.50'	86.71'	43.72'
19	15°49'49"	274.50'	75.84'	38.18'
20	02°16'06"	274.50'	10.87'	5.43'
21	17°13'00"	20.00'	6.01'	3.03'
22	75°34'56"	20.00'	26.38'	15.51'
23	02°53'04"	357.84'	18.01'	9.01'
24	02°42'56"	20.00'	32.39'	21.00'
25	02°47'56"	660.00'	32.24'	16.12'
26	02°53'04"	383.34'	19.30'	9.65'
27	02°53'04"	408.84'	20.58'	10.29'
28	04°04'37"	660.00'	46.96'	23.49'
29	94°04'37"	20.00'	32.84'	21.48'
30	17°41'21"	20.00'	6.17'	3.11'
31	76°23'16"	20.00'	26.66'	15.73'
32	14°30'00"	660.00'	167.03'	83.98'
33	09°21'05"	645.00'	105.27'	52.75'
34	07°37'27"	660.00'	87.82'	43.98'
35	02°47'56"	700.00'	34.19'	17.10'

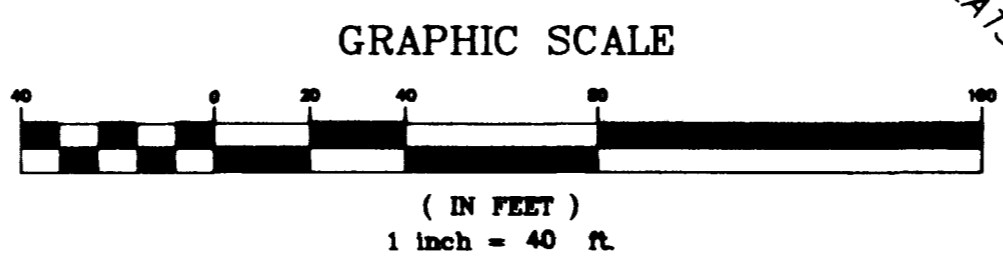
COURSE DATA

LINE	BEARING	DISTANCE
L1	N 00°38'13" W	25.19'
L2	S 85°32'14" E	18.02'
L3	N 04°27'46" E (R)	51.00'
L4	N 20°23'30" E (R)	0.00'
L5	N 32°22'06" E (R)	0.00'
L6	N 66°23'49" W	27.28'
L7	S 20°08'55" E (R)	0.00'
L8	N 76°16'48" E (R)	0.00'
L9	N 19°36'30" W (R)	0.00'
L10	N 70°23'30" E	40.50'
L11	N 19°36'30" W	5.58'
L12	N 13°55'30" W	15.00'
L13	N 13°55'30" W	40.00'
L14	S 16°43'26" E	0.16'
L15	S 89°30'26" E (R)	0.00'
L16	N 73°16'34" E (R)	0.00'
L17	S 13°55'30" E (R)	0.00'
L18	N 16°43'26" E (R)	61.62'
L19	S 73°16'34" W (R)	0.00'
L20	S 55°35'13" W (R)	0.00'
L21	S 20°48'03" E (R)	0.00'
L22	S 28°25'30" E (R)	15.00'
L23	N 28°25'30" W (R)	40.00'
L24	S 85°32'45" E	20.94'
L25	N 19°04'25" W (R)	0.00'



ELKHORN SPRINGS - PARCEL 5A PLATS.
MONUMENTATION TIE MAP CERTIFICATION
 I, KEVIN E. MOTT, A PROFESSIONAL LAND SURVEYOR REGISTERED IN THE STATE OF NEVADA, DO HEREBY CERTIFY THAT THE MONUMENTS HAVE BEEN SET AND THE TIE DISTANCES ESTABLISHED AS SHOWN HEREON. THIS SURVEY WAS COMPLETED ON 2-9-98.

- LEGEND**
- SECTION LINE
 - STREET CENTERLINE
 - BLOCK LINES
 - LOT LINES
 - BOUNDARY LINE
 - SETBACK LINE
 - LINE SEGMENT NUMBER
 - CURVE SEGMENT NUMBER
 - LOT NUMBER
 - AREA OF LOT
 - SET TYPE III MONUMENT STAMPED P.L.S. 8662 WITH REF. TIES IN TOP OF CURB (UNLESS OTHERWISE NOTED)
 - FOUND TYPE III MONUMENTS PER BK.60 PG. 72 UNLESS INDICATED OTHERWISE



TOTAL LOTS = 32
 TOTAL COMMON LOTS = 2

- BLOCK NUMBERS**
- ▲ SET REFERENCE MONUMENT IN CURB, PLS 8662
 - FD. REFERENCE MONUMENT IN CURB, PLS 8660

NOTE: DIRECT VEHICULAR ACCESS TO SUNNY SPRINGS LANE THROUGH COMMON AREAS FROM ADJUTING LOTS IS PROHIBITED.

FD ALUM. CAP, PLS 8866

ELKHORN SPRINGS - PARCEL 5A
 RECORDED IN BOOK 64 PAGE 34 OF PLATS

ELKHORN SPRINGS - PARCEL 5B
 SHEET 1 OF 1

BOOK 75 PAGE 19
 058-4299-5B

