

95011

01493

APN 01D-020-007  
ATNIM  
CONSULTANT INC.

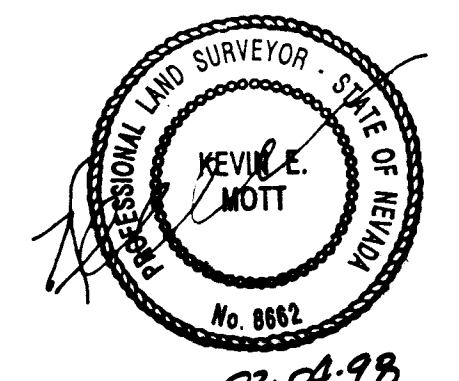
A P N 01D - 020 - 006  
YASSAI JEFF & SEYED JAHAR

# - MONUMENTATION TIE MAP - ELKHORN SPRINGS - PARCEL 5A

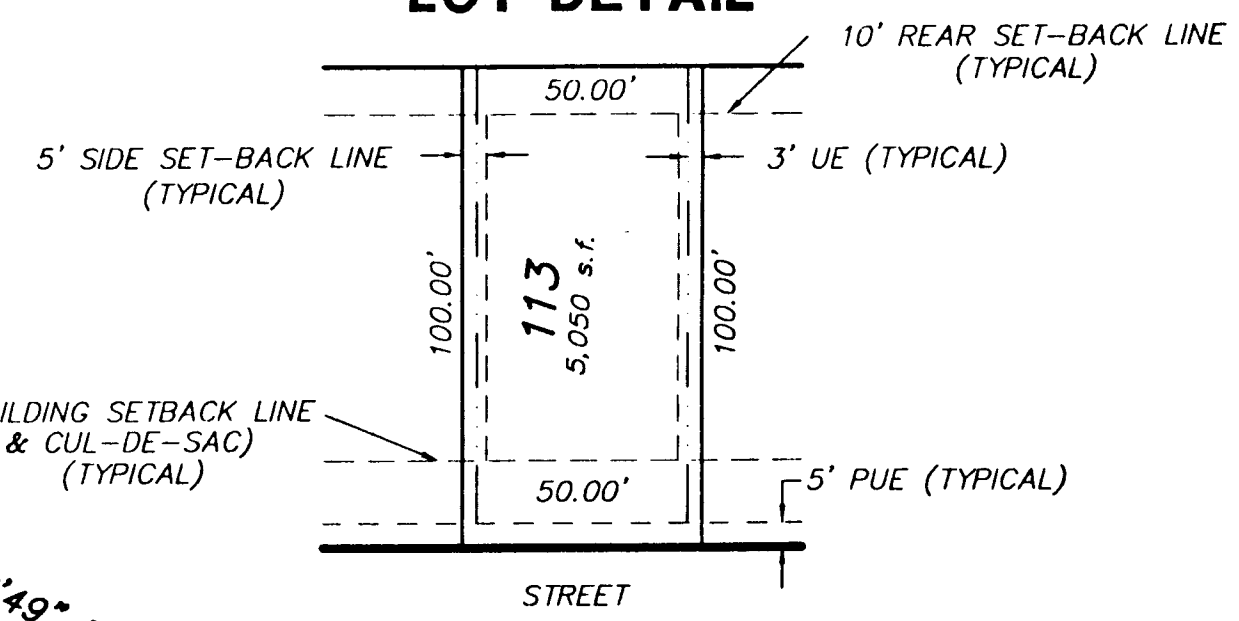
A SUBDIVISION OF A PORTION OF LOT 5 AND A PORTION OF COMMON LOT 'J' AS SHOWN BY MAP THEREOF ON FILE IN BOOK 60 PAGE 72 OF PLATS RECORDED IN THE CLARK COUNTY RECORDER'S OFFICE, LYING WITHIN SECTION 16, OF TOWNSHIP 19 SOUTH, RANGE 60 EAST, M.D.M., CITY OF LAS VEGAS, CLARK COUNTY, NEVADA.

### MONUMENTATION TIE MAP CERTIFICATE

I, KEVIN E. MOTT, a professional land surveyor registered in the state of Nevada, do hereby certify that the monuments have been set and the tie distances established as shown hereon. This survey was completed on 02-04-98.  
(AND CONSIST OF ONE SHEET.)



### TYPICAL LOT DETAIL

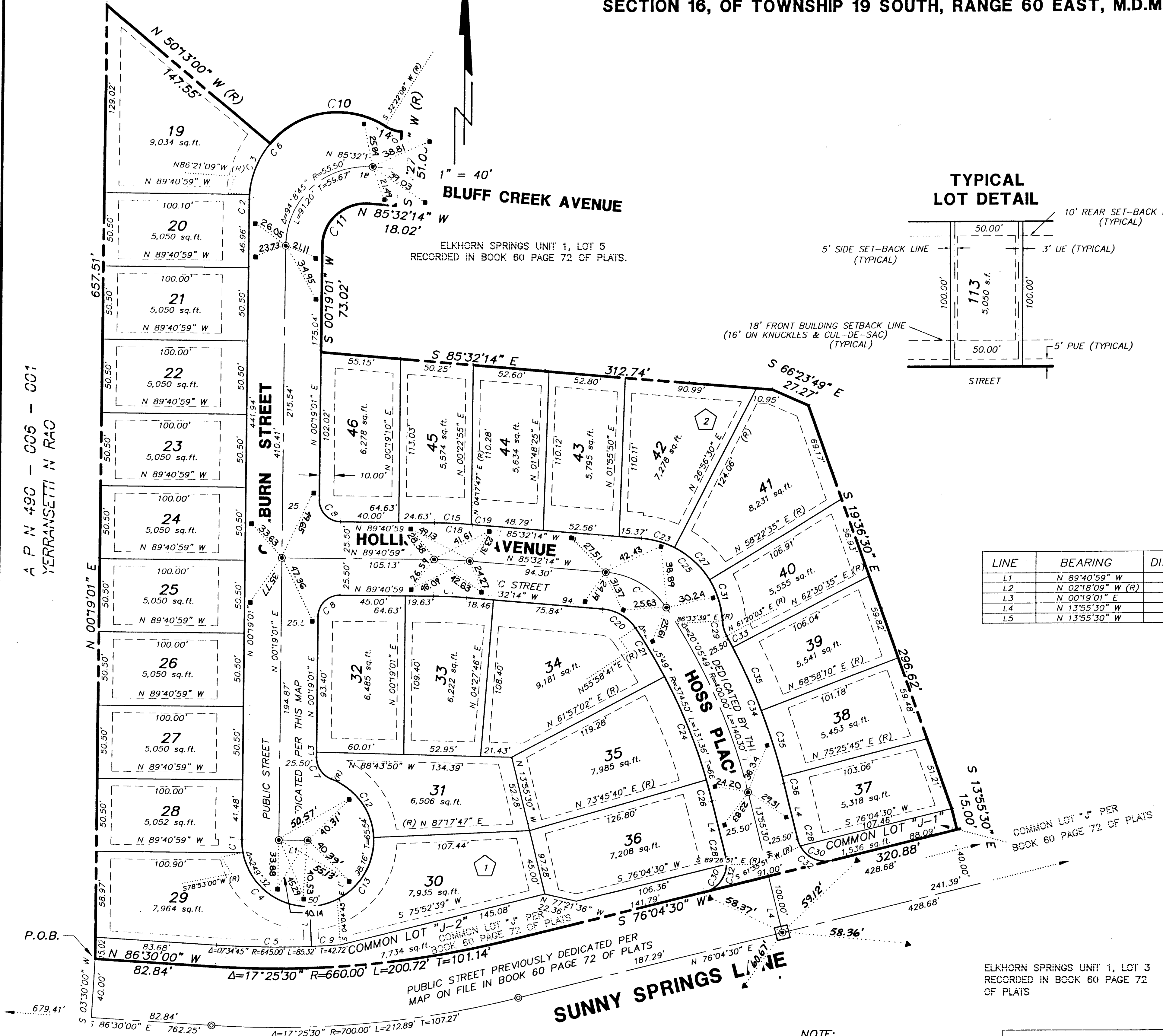


### LEGEND

- STREET CENTERLINE
- BLOCK LINES
- LOT LINES
- BOUNDARY LINE
- SETBACK LINE
- LINE SEGMENT NUMBER
- CURVE SEGMENT NUMBER
- LOT NUMBER
- FOUND REFERENCE MONUMENT PLS 8866
- BLOCK NUMBERS
- SET MONUMENT - 5/8" REBAR AND ALUMINUM CAP STAMPED PLS 8866 WITH ALUMINUM CAP TIES IN TOP OF CURB (UNLESS OTHERWISE NOTED)
- FOUND MONUMENTS - ALUMINUM CAP STAMPED PLS 8866 WITH BRASS CAP TIES IN TOP OF CURB (UNLESS OTHERWISE NOTED) PER FINAL MAP IN BOOK 60 PAGE 72 OF PLATS
- FD 5/8" REBAR W/ALUM CAP PLS 8866
- LOTS WILL BE MONUMENTED IN THE FRONT WITH A SCRIBE IN THE TOP OF CURB AT THE INTERSECTION OF THE SIDE LOT LINE AND IN THE REAR WITH A NAIL & TAG - PLS 8056 IN THE FACE OF WALL AT THE INTERSECTION OF THE SIDE LOT LINE.
- SET REFERENCE MONUMENT PLS 8862 IN CURB
- TOTAL LOTS = 28
- TOTAL COMMON LOTS = 2

LINE	BEARING	DISTANCE
L1	N 89°40'59" W	20.00'
L2	N 02°18'09" W (R)	27.54'
L3	N 00°19'01" E	3.35'
L4	N 13°55'30" W	40.00'
L5	N 13°55'30" W	60.00'

CURVE	DELTA	RADIUS	LENGTH	TANGENT
1	11°26'01"	45.50'	9.08'	4.55'
2	03°19'50"	61.00'	3.55'	1.77'
3	36°08'09"	61.00'	38.47'	19.90'
4	81°11'09"	45.50'	64.47'	38.99'
5	05°48'09"	645.00'	65.32'	32.69'
6	122°03'05"	61.00'	129.94'	110.16'
7	69°32'15"	16.00'	19.42'	11.11'
8	90°00'00"	15.00'	23.56'	15.00'
9	01°46'36"	645.00'	20.00'	10.00'
10	82°35'06"	61.00'	87.92'	53.58'
11	94°08'45"	30.00'	49.29'	32.25'
12	66°31'01"	45.50'	52.82'	29.84'
13	90°24'04"	45.50'	71.79'	45.82'
14	27°54'20"	25.00'	12.18'	6.21'
15	03°58'46"	365.50'	25.39'	12.70'
16	04°08'45"	314.50'	22.76'	11.38'
17	04°08'45"	340.00'	24.60'	12.31'
18	04°08'45"	365.50'	26.45'	13.23'
19	00°09'59"	365.50'	1.06'	0.53'
20	51°30'55"	30.00'	26.97'	14.48'
21	05°58'21"	374.50'	39.04'	19.54'
22	51°30'55"	55.50'	49.90'	26.78'
23	22°28'44"	61.00'	23.93'	12.12'
24	11°48'38"	374.50'	77.20'	38.74'
25	82°05'53"	61.00'	87.41'	53.12'
26	02°18'50"	374.50'	15.12'	7.56'
27	31°26'05"	61.00'	33.47'	17.17'
28	14°28'39"	20.00'	5.05'	2.54'
29	25°13'36"	25.00'	11.01'	5.59'
30	75°31'21"	20.00'	26.36'	15.49'
31	28°11'04"	61.00'	30.01'	15.31'
32	90°00'00"	20.00'	31.42'	20.00'
33	01°10'32"	425.50'	8.73'	4.37'
34	14°44'27"	425.50'	109.47'	55.04'
35	06°27'35"	425.50'	47.97'	24.01'
36	00°38'45"	425.50'	4.80'	2.40'



A P N 490 - 006 - 001  
YERRANSETTI N RAO

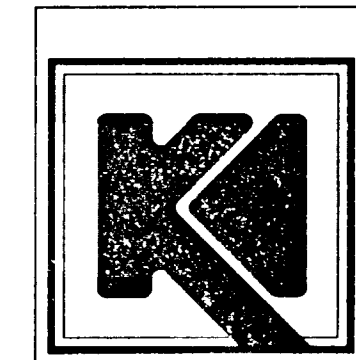
ELKHORN SPRINGS UNIT 1, LOT 1  
RECORDED IN BOOK 60 PAGE 72  
OF PLATS

PUBLIC STREET PREVIOUSLY DEDICATED PER  
MAP ON FILE IN BOOK 60 PAGE 72 OF PLATS

ELKHORN SPRINGS UNIT 1, LOT 3  
RECORDED IN BOOK 60 PAGE 72  
OF PLATS

### NOTE:

DIRECT VEHICULAR ACCESS TO SUNNY SPRINGS LANE THROUGH COMMON AREA FROM ABUTTING LOTS IS PROHIBITED



THE KEITH COMPANIES, NEVADA

- PLANNING
- CIVIL ENGINEERING
- ENVIRONMENTAL SERVICES
- LAND SURVEYING
- DEVELOPER SERVICES
- PUBLIC WORKS
- WATER RESOURCES

ELKHORN SPRINGS PARCEL 5A  
SHEET 1 OF 1

BOOK 65 PAGE 81  
058-4299-5A

