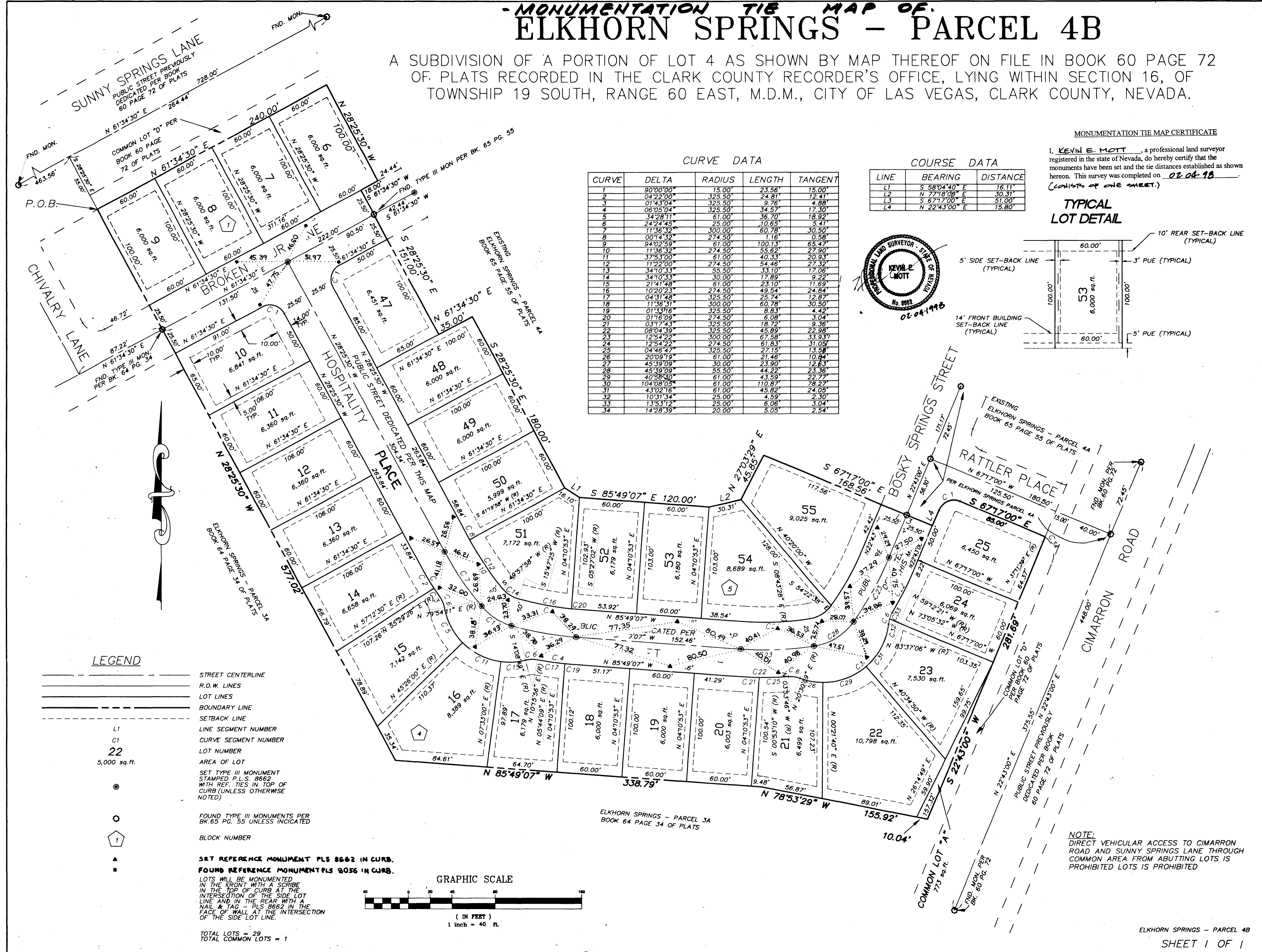


960415

00926

# - MONUMENTATION TIE MAP OF ELKHORN SPRINGS - PARCEL 4B

A SUBDIVISION OF A PORTION OF LOT 4 AS SHOWN BY MAP THEREOF ON FILE IN BOOK 60 PAGE 72 OF PLATS RECORDED IN THE CLARK COUNTY RECORDER'S OFFICE, LYING WITHIN SECTION 16, OF TOWNSHIP 19 SOUTH, RANGE 60 EAST, M.D.M., CITY OF LAS VEGAS, CLARK COUNTY, NEVADA.



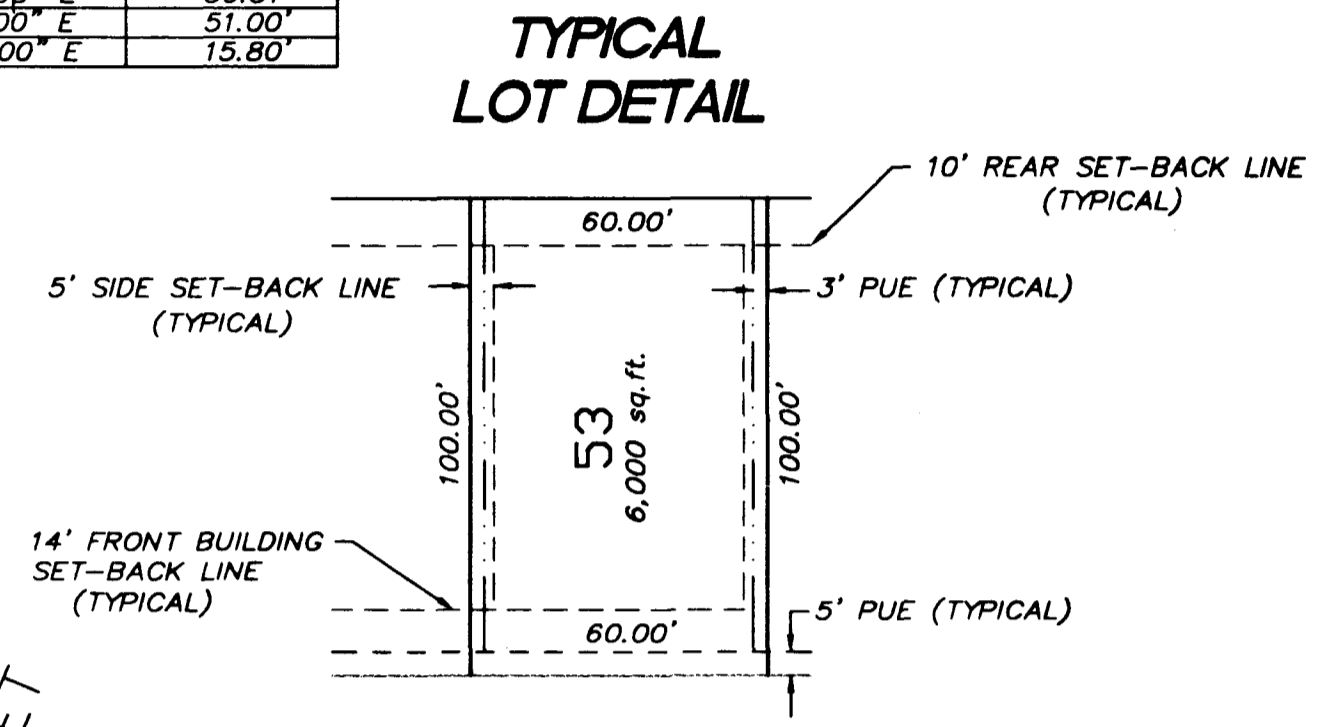
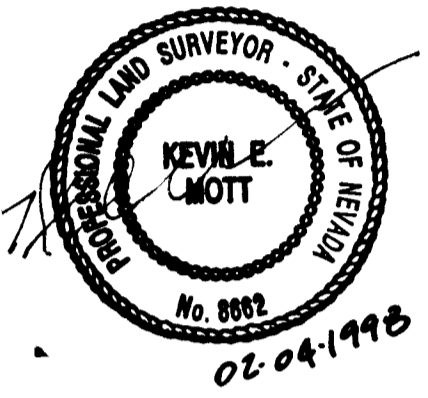
**CURVE DATA**

CURVE	DELTA	RADIUS	LENGTH	TANGENT
1	90°00'00"	15.00'	23.56'	15.00'
2	04°22'00"	325.50'	24.81'	12.41'
3	01°43'04"	325.50'	9.76'	4.88'
4	06°05'04"	325.50'	34.57'	17.30'
5	34°28'11"	61.00'	36.70'	18.92'
6	24°24'45"	25.00'	10.65'	5.41'
7	11°36'32"	300.00'	60.78'	30.50'
8	00°14'32"	274.50'	1.16'	0.58'
9	94°02'59"	61.00'	100.13'	65.47'
10	11°36'32"	274.50'	55.62'	27.90'
11	37°53'00"	61.00'	40.33'	20.93'
12	11°22'00"	274.50'	54.46'	27.32'
13	34°10'33"	55.50'	33.10'	17.06'
14	34°10'33"	30.00'	17.89'	9.22'
15	21°41'48"	61.00'	23.10'	11.69'
16	10°20'23"	274.50'	49.54'	24.84'
17	04°31'48"	325.50'	25.74'	12.87'
18	11°36'31"	300.00'	60.78'	30.50'
19	01°33'16"	325.50'	8.83'	4.42'
20	01°16'09"	274.50'	6.08'	3.04'
21	03°17'43"	325.50'	18.72'	9.36'
22	08°04'19"	325.50'	45.89'	22.98'
23	12°54'22"	300.00'	67.58'	33.93'
24	12°54'22"	274.50'	61.83'	31.05'
25	04°46'47"	325.50'	27.15'	13.58'
26	20°09'19"	61.00'	21.46'	10.94'
27	45°39'09"	30.00'	23.90'	12.51'
28	45°39'09"	55.50'	44.22'	23.36'
29	40°56'30"	61.00'	43.59'	22.77'
30	104°08'05"	61.00'	110.87'	78.27'
31	43°02'16"	61.00'	45.82'	24.05'
32	10°31'34"	25.00'	1.59'	0.79'
33	13°53'12"	25.00'	6.06'	3.04'
34	14°28'39"	20.00'	5.05'	2.54'

**COURSE DATA**

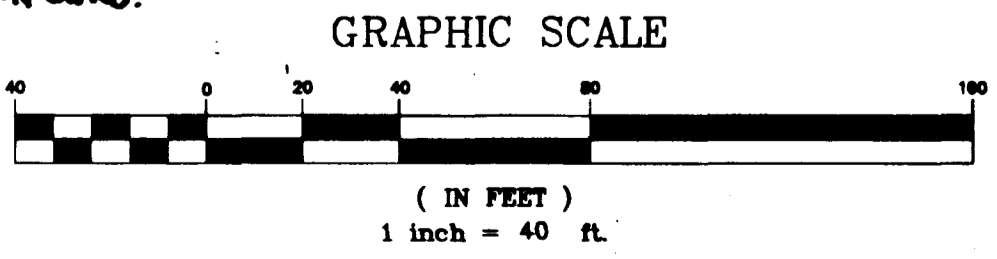
LINE	BEARING	DISTANCE
L1	S 58°04'40" E	16.11'
L2	N 77°18'08" E	30.31'
L3	S 67°17'00" E	51.00'
L4	N 22°43'00" E	15.80'

**MONUMENTATION TIE MAP CERTIFICATE**  
 I, KEVIN E. MOTT, a professional land surveyor registered in the state of Nevada, do hereby certify that the monuments have been set and the tie distances established as shown hereon. This survey was completed on 02-04-1998.  
 (CONSISTS OF ONE SHEET.)



- LEGEND**
- STREET CENTERLINE
  - R.O.W. LINES
  - LOT LINES
  - BOUNDARY LINE
  - SETBACK LINE
  - L1 LINE SEGMENT NUMBER
  - C1 CURVE SEGMENT NUMBER
  - 22 LOT NUMBER
  - 5,000 sq.ft. AREA OF LOT
  - SET TYPE III MONUMENT STAMPED P.L.S. 8662 WITH REF. TIES IN TOP OF CURB (UNLESS OTHERWISE NOTED)
  - FOUND TYPE III MONUMENTS PER BK.65 PG. 55 UNLESS INDICATED
  - BLOCK NUMBER
  - ▲ SET REFERENCE MONUMENT PLS 8662 IN CURB.
  - FOUND REFERENCE MONUMENT PLS 8056 IN CURB.

LOTS WILL BE MONUMENTED IN THE FRONT WITH A SCRIBE IN THE TOP OF CURB AT THE INTERSECTION OF THE SIDE LOT LINE AND IN THE REAR WITH A NAIL & TAG - PLS 8662 IN THE FACE OF WALL AT THE INTERSECTION OF THE SIDE LOT LINE.



TOTAL LOTS = 29  
 TOTAL COMMON LOTS = 1

**NOTE:** DIRECT VEHICULAR ACCESS TO CIMARRON ROAD AND SUNNY SPRINGS LANE THROUGH COMMON AREA FROM ABUTTING LOTS IS PROHIBITED UNLESS OTHERWISE NOTED.

