

# MONUMENTATION TIE MAP FOR: ELKHORN SPRINGS - PARCEL 3D

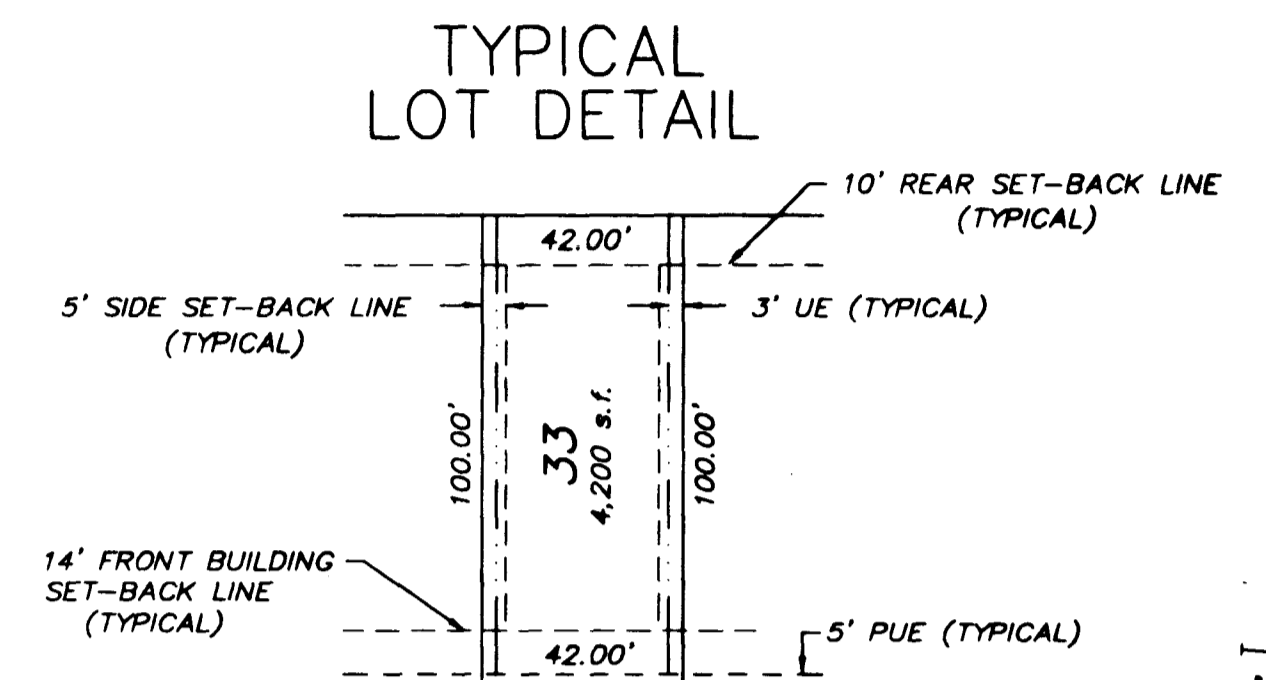
A SUBDIVISION A PORTION OF OF LOT 3 AS SHOWN BY MAP THEREOF ON FILE IN BOOK 60 PAGE 72 OF PLATS RECORDED IN THE CLARK COUNTY RECORDER'S OFFICE, LYING WITHIN SECTION 16, OF TOWNSHIP 19 SOUTH, RANGE 60 EAST, M.D.M., CITY OF LAS VEGAS, CLARK COUNTY, NEVADA.

**LEGEND**

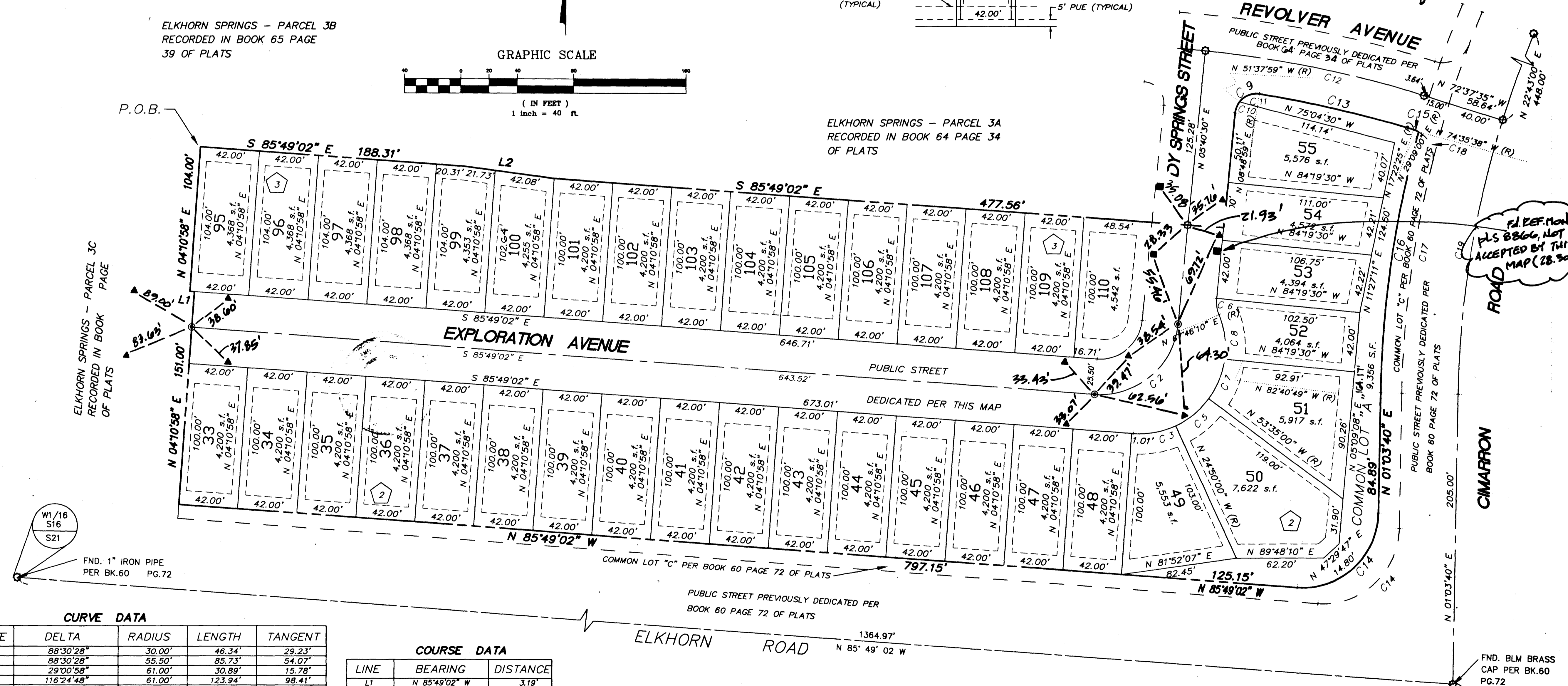
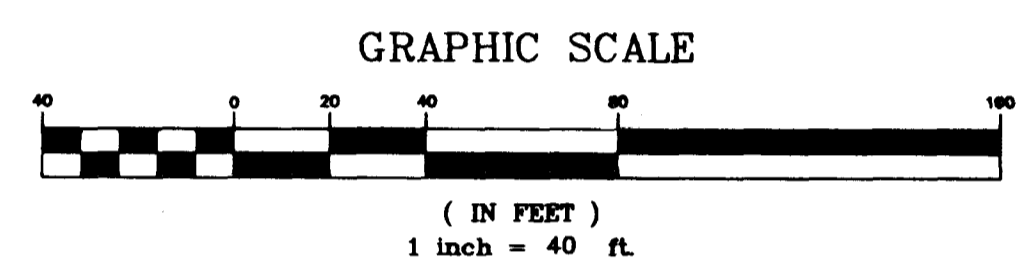
---	STREET CENTERLINE
---	R.O.W. LINES
---	LOT LINES
---	BOUNDARY LINE
---	SETBACK LINE
L1	LINE SEGMENT NUMBER
C1	CURVE SEGMENT NUMBER
22	LOT NUMBER
5,000 sq. ft.	AREA OF LOT
●	SET TYPE III MONUMENT STAMPED P.L.S. 8662 WITH REF. TIES IN TOP OF CURB (UNLESS OTHERWISE NOTED)
○	FOUND MONUMENTS AS SHOWN IN PARCEL 3A RECORDED IN BOOK 64, PAGE 34 OF PLATS
1	BLOCK NUMBER
LOTS WILL BE MONUMENTED IN THE FRONT WITH A SCRIBE IN THE TOP OF CURB AT THE INTERSECTION OF THE SIDE LOT LINE AND IN THE REAR WITH A NAIL & TAG - PLS 8662 IN THE FACE OF WALL AT THE INTERSECTION OF THE SIDE LOT LINE.	

TOTAL LOTS = 39  
TOTAL COMMON LOTS = 1  
▲ SET REFERENCE MONUMENT IN CURB, PLS 8662  
■ FO. REFERENCE MONUMENT IN CURB, PLS 8666

ELKHORN SPRINGS - PARCEL 3B  
RECORDED IN BOOK 65 PAGE 39 OF PLATS



**MONUMENTATION TIE MAP CERTIFICATION**  
I, KEVIN E. MOTT, A PROFESSIONAL LAND SURVEYOR REGISTERED IN THE STATE OF NEVADA, DO HEREBY CERTIFY THAT THE MONUMENTS HAVE BEEN SET AND THE TIE DISTANCES ESTABLISHED AS SHOWN HEREON. THIS SURVEY WAS COMPLETED ON 2-9-98



W1/16 S16 S21  
FND. 1" IRON PIPE PER BK.60 PG.72

PLS 8666, NOT ACCEPTED BY THIS MAP (28.90)

FND. BLM BRASS CAP PER BK.60 PG.72  
1/4 S16 S21

**CURVE DATA**

CURVE	DELTA	RADIUS	LENGTH	TANGENT
1	88°30'28"	30.00'	46.34'	29.23'
2	88°30'28"	55.50'	85.73'	54.07'
3	29°00'58"	61.00'	30.89'	15.78'
4	116°24'48"	61.00'	123.94'	98.41'
5	28°45'00"	61.00'	30.61'	15.63'
6	27°54'20"	25.00'	12.18'	6.21'
7	29°05'49"	61.00'	30.98'	15.83'
8	29°33'01"	61.00'	31.46'	16.09'
9	93°08'29"	15.00'	24.38'	15.85'
10	32°41'31"	15.00'	8.96'	4.40'
11	60°28'58"	15.00'	15.93'	6.74'
12	11°41'55"	779.53'	159.16'	79.86'
13	08°33'26"	754.03'	112.62'	56.41'
14	93°07'18"	54.00'	87.77'	57.03'
15	11°46'35"	20.00'	4.11'	2.06'
16	14°20'42"	755.00'	189.03'	95.01'
17	12°52'49"	740.00'	166.35'	83.53'
18	74°47'29"	20.00'	26.11'	15.29'
19	16°18'45"	700.00'	199.29'	100.33'

**COURSE DATA**

LINE	BEARING	DISTANCE
L1	N 85°49'02" W	3.19'
L2	S 82°13'25" E	63.82'

**NOTE:**  
DIRECT VEHICULAR ACCESS TO ELKHORN ROAD AND CIMARRON ROAD THROUGH COMMON AREA FROM ADJUTING LOTS IS PROHIBITED

