

441215

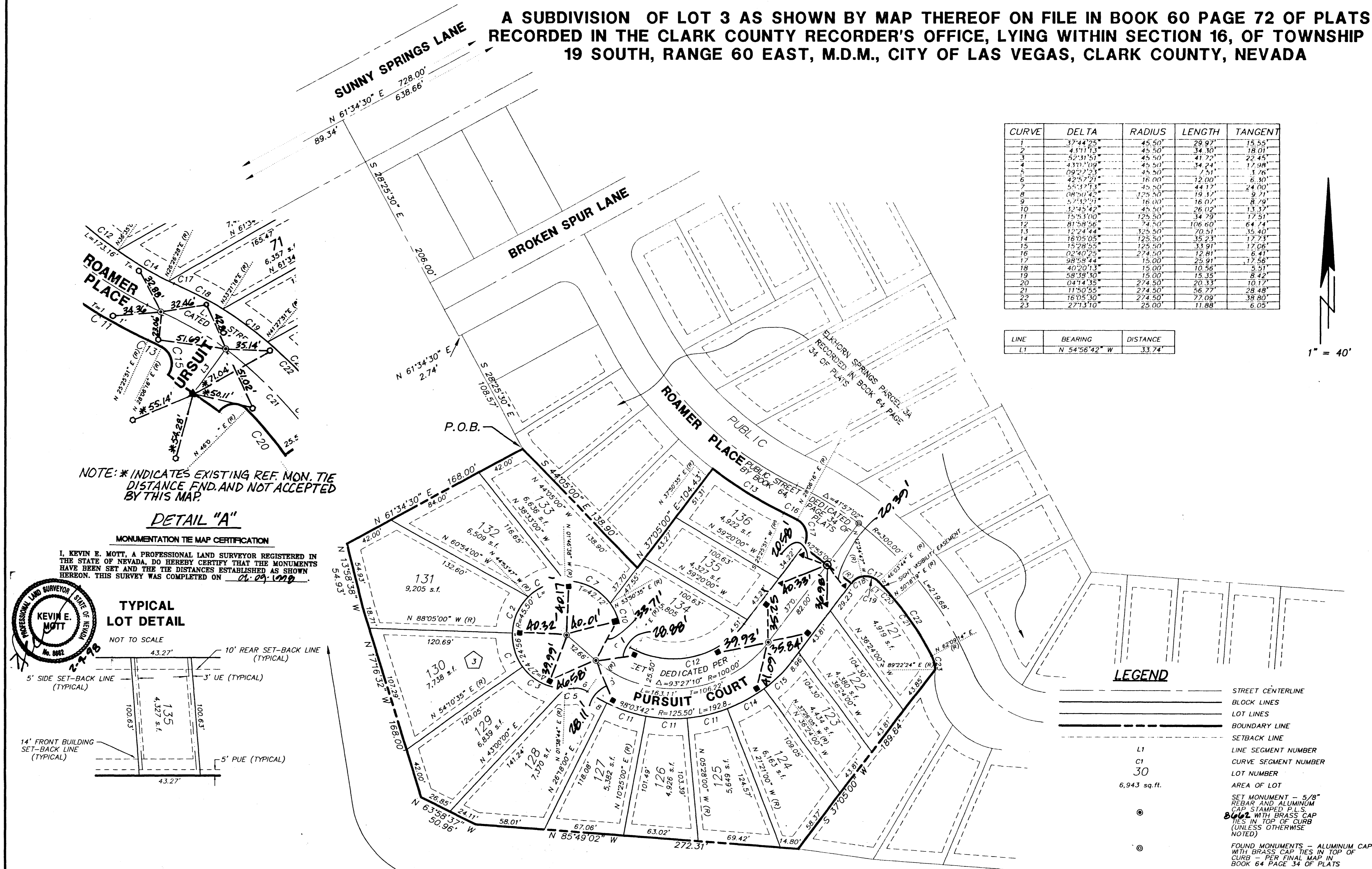
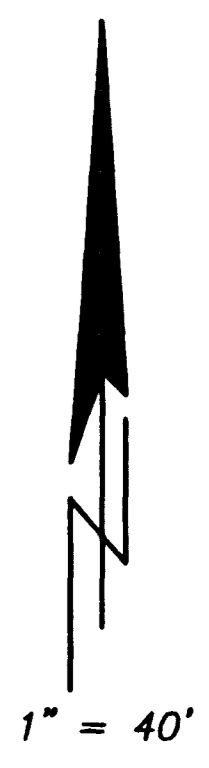
01190

MONUMENTATION TIE MAP FOR: ELKHORN SPRINGS - PARCEL 3B

A SUBDIVISION OF LOT 3 AS SHOWN BY MAP THEREOF ON FILE IN BOOK 60 PAGE 72 OF PLATS
RECORDED IN THE CLARK COUNTY RECORDER'S OFFICE, LYING WITHIN SECTION 16, OF TOWNSHIP
19 SOUTH, RANGE 60 EAST, M.D.M., CITY OF LAS VEGAS, CLARK COUNTY, NEVADA

CURVE	DELTA	RADIUS	LENGTH	TANGENT
1	37°44'25"	45.50'	29.97'	15.55'
2	41°11'13"	45.50'	34.30'	18.01'
3	52°31'51"	45.50'	41.72'	22.45'
4	43°07'09"	45.50'	34.24'	17.98'
5	09°27'23"	45.50'	7.51'	3.76'
6	42°57'21"	16.00'	12.00'	6.30'
7	55°31'13"	45.50'	44.17'	24.00'
8	08°00'42"	125.50'	19.11'	9.71'
9	57°12'21"	16.00'	16.01'	8.79'
10	12°45'42"	45.50'	26.02'	13.37'
11	75°51'00"	125.50'	34.79'	17.51'
12	81°58'56"	74.50'	106.60'	64.74'
13	12°24'42"	325.50'	70.91'	35.40'
14	16°05'05"	125.50'	35.23'	17.73'
15	15°28'55"	125.50'	33.91'	17.06'
16	02°40'25"	274.50'	12.81'	6.41'
17	98°58'44"	15.00'	25.91'	17.56'
18	40°20'13"	15.00'	10.56'	5.31'
19	58°38'50"	15.00'	15.35'	8.42'
20	04°14'35"	274.50'	20.33'	10.17'
21	11°50'55"	274.50'	56.77'	28.48'
22	16°05'30"	274.50'	77.09'	38.80'
23	27°13'10"	25.00'	11.88'	6.05'

LINE	BEARING	DISTANCE
L1	N 54°56'42" W	33.74'

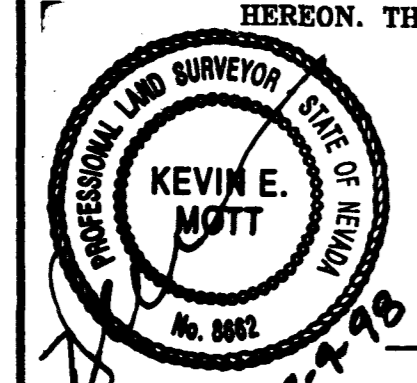


NOTE: * INDICATES EXISTING REF. MON. TIE DISTANCE FND. AND NOT ACCEPTED BY THIS MAP.

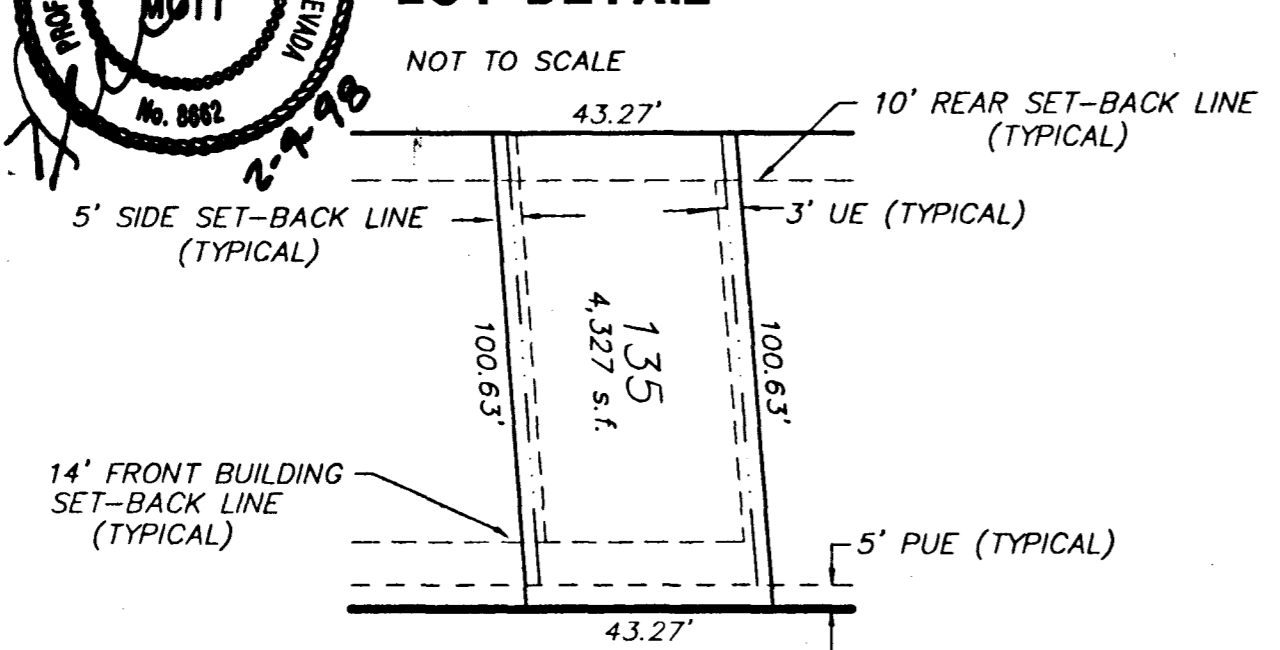
DETAIL "A"

MONUMENTATION TIE MAP CERTIFICATION

I, KEVIN E. MOTT, A PROFESSIONAL LAND SURVEYOR REGISTERED IN THE STATE OF NEVADA, DO HEREBY CERTIFY THAT THE MONUMENTS HAVE BEEN SET AND THE TIE DISTANCES ESTABLISHED AS SHOWN HEREON. THIS SURVEY WAS COMPLETED ON 01-09-2009.



TYPICAL LOT DETAIL



LEGEND

- STREET CENTERLINE
- BLOCK LINES
- LOT LINES
- BOUNDARY LINE
- SETBACK LINE
- LINE SEGMENT NUMBER
- CURVE SEGMENT NUMBER
- LOT NUMBER
- AREA OF LOT
- SET MONUMENT - 5/8" REBAR AND ALUMINUM CAP STAMPED P.L.S. 8062 WITH BRASS CAP TIES IN TOP OF CURB (UNLESS OTHERWISE NOTED)
- FOUND MONUMENTS - ALUMINUM CAP WITH BRASS CAP TIES IN TOP OF CURB - PER FINAL MAP IN BOOK 64 PAGE 34 OF PLATS
- BLOCK NUMBERS
- LOTS WILL BE MONUMENTED IN THE FRONT WITH A SCRIBE AT THE TOP OF CURB AT THE INTERSECTION OF THE SIDE LOT LINE, AND IN THE REAR WITH A NAIL & TAG - PLS 8056 IN THE FACE OF WALL AT THE INTERSECTION OF THE SIDE LOT LINE.
- ELKHORN SPRINGS - 3B

THE KEITH COMPANIES, NEVADA

- PLANNING
- CIVIL ENGINEERING
- ENVIRONMENTAL SERVICES
- LAND SURVEYING
- DEVELOPER SERVICES
- PUBLIC WORKS
- WATER RESOURCES

4052 SOUTH INDUSTRIAL ROAD, LAS VEGAS, NV 89103 (702)733-0350 FAX(702)733-9282

ELKHORN SPRINGS UNIT 1, LOT 3
RECORDED IN BOOK 60 PAGE 72
OF PLATS

TOTAL LOTS = 16
TOTAL COMMON LOTS = 0
▲ SET REFERENCE MON. IN CURB, PLS 8062
■ FO. REFERENCE MON. IN CURB, PLS 8060

BOOK 60 PAGE 39
058-4299-3B

2691

