

970626

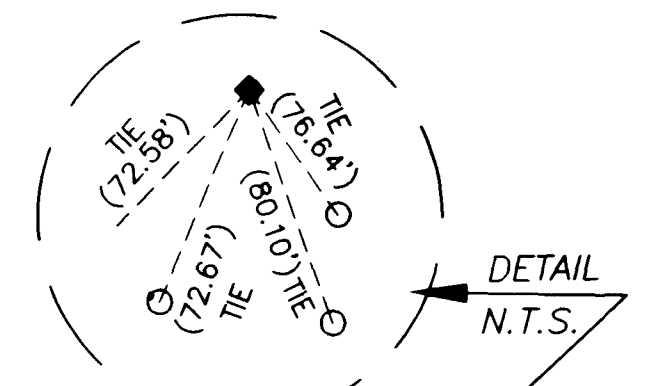
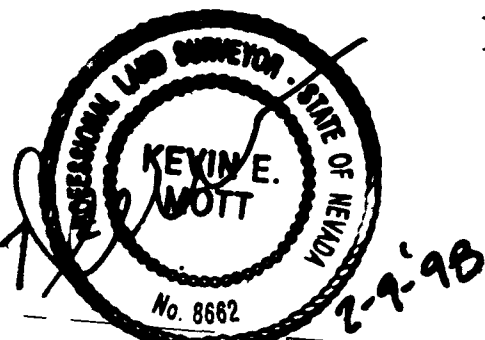
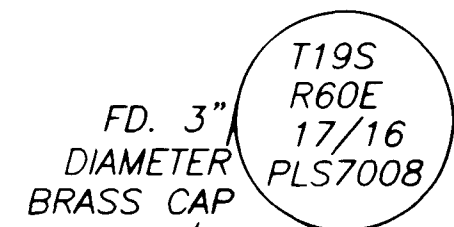
MONUMENTATION TIE MAP FOR:

01413

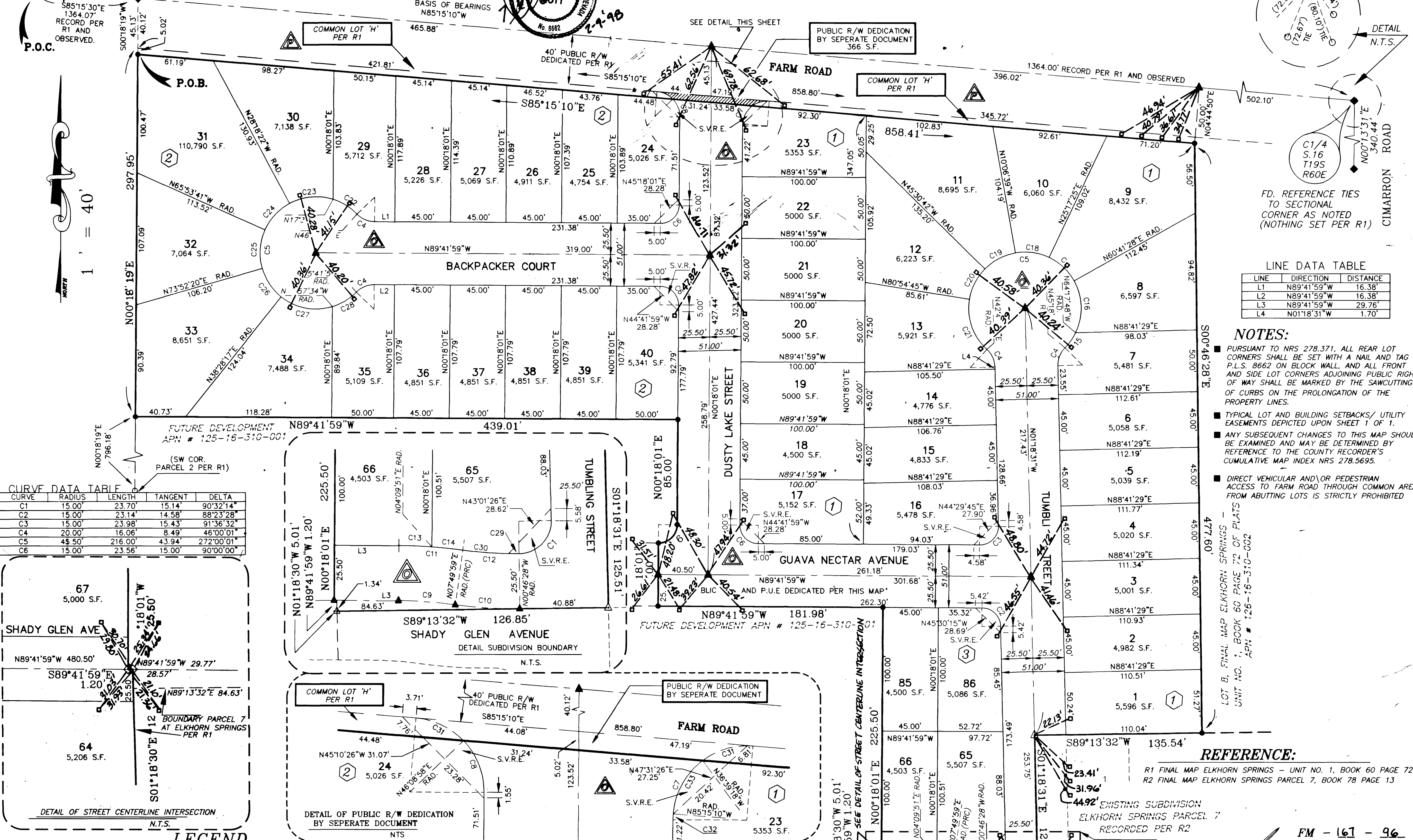
ELKHORN SPRINGS PARCEL 2 - UNIT 1

MONUMENTATION TIE MAP CERTIFICATION
 I, KEVIN E. MOTT, A PROFESSIONAL LAND SURVEYOR REGISTERED IN THE STATE OF NEVADA, DO HEREBY CERTIFY THAT THE MONUMENTS HAVE BEEN SET AND THE TIE DISTANCES ESTABLISHED AS SHOWN HEREON. THIS SURVEY WAS COMPLETED ON **2-9-1998**.

A DIVISION OF PARCEL 2 OF ELKHORN SPRINGS - UNIT NO. 1 AS SHOWN IN BOOK 60 PAGE 72 OF PLATS, OFFICIAL RECORDS, CLARK COUNTY, NEVADA, ALSO BEING A PORTION OF THE SOUTH HALF (S 1/2) OF SECTION 16, T.19S., R.60E., M.D.M., CITY OF LAS VEGAS, CLARK COUNTY, NEVADA

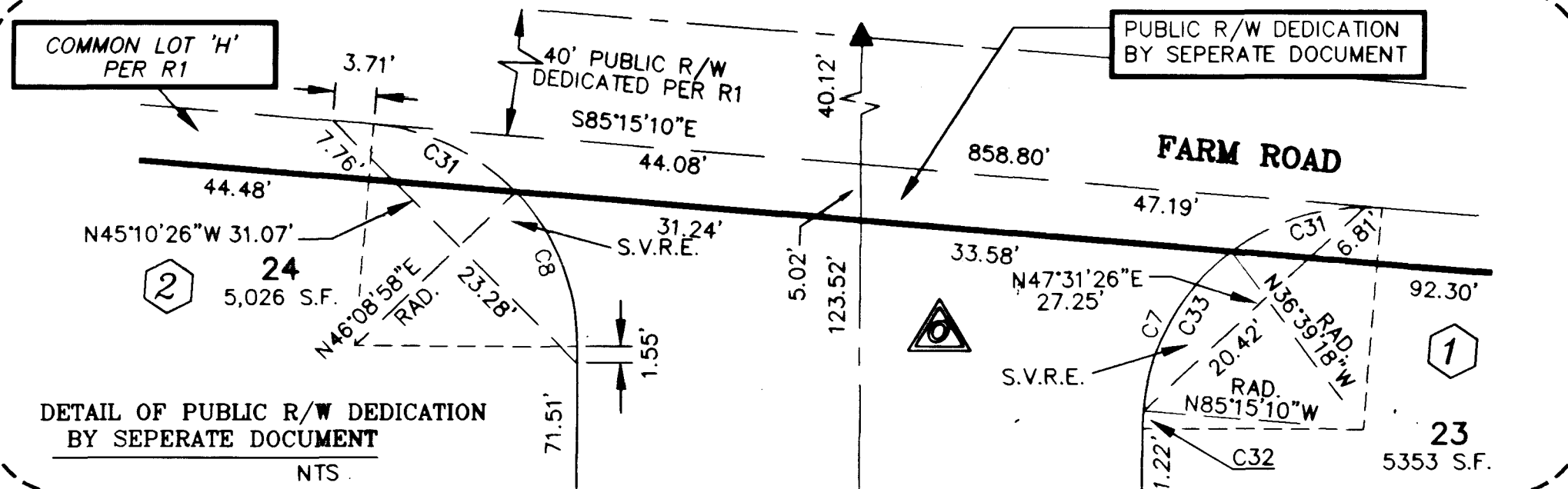
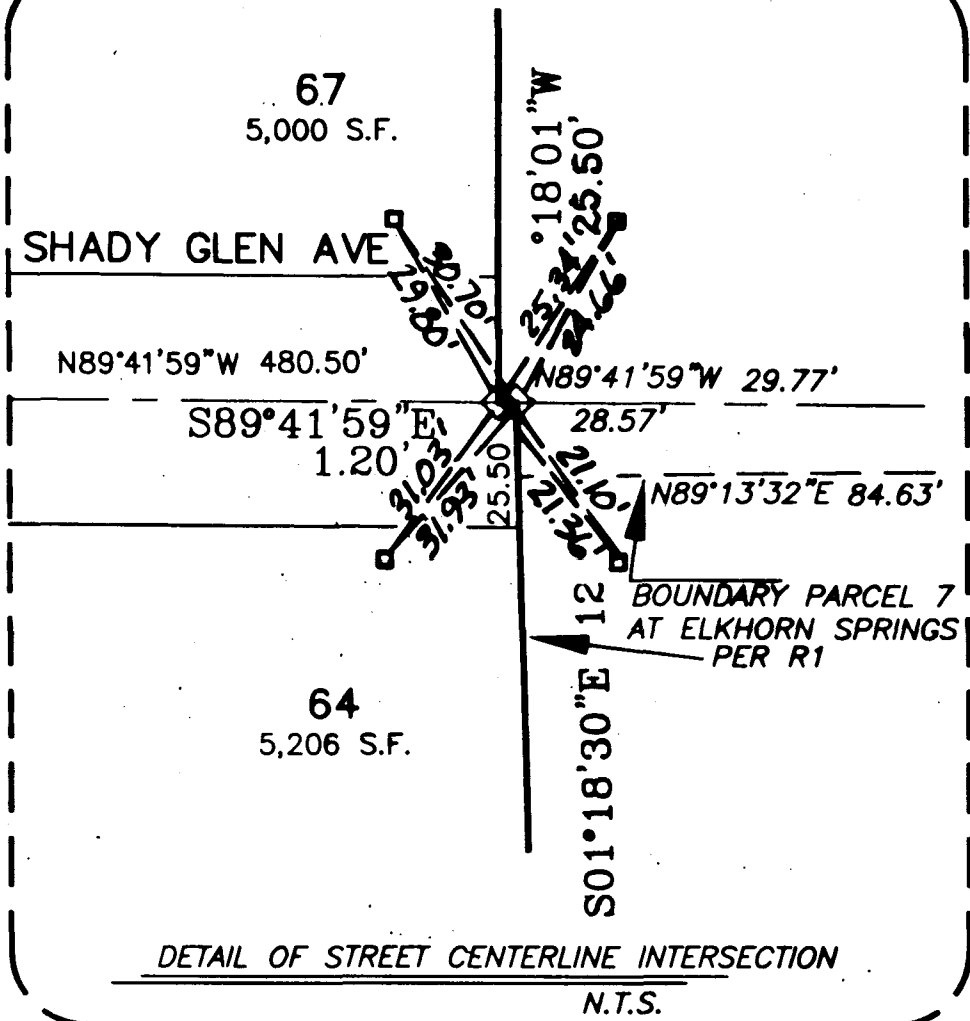


LEGEND
 □ SET REFERENCE MON. IN CURB, PLS 8662



CURVE DATA TABLE

CURVE	RADIUS	LENGTH	TANGENT	DELTA
C1	15.00	23.70	15.14	90°32'14"
C2	15.00	23.14	14.58	88°23'28"
C3	15.00	23.98	15.43	91°36'32"
C4	20.00	16.06	8.49	46°00'01"
C5	45.50	216.00	43.94	272°00'01"
C6	15.00	23.56	15.00	90°00'00"



LEGEND

- CENTER LINE / SECTIONAL DIVISION LINE
- SUBJECT PROPERTY BOUNDARY LINE
- LOT LINE
- STREET CENTERLINE
- ◆ FOUND TYPE III MONUMENT PER R1 (EXCEPT AS NOTED)
- SET REBAR & ALUM. CAP PLS # 8662
- ▲ SET TYPE III MONUMENT (W/TIES) PLS # 8662
- △ FD. TYPE III MONUMENT (W/TIES) PLS # 8662 PER R2

△ DENOTES AREA AS BEING PREVIOUSLY DEDICATED AS PUBLIC RIGHT OF WAY PER BOOK 60 72 OF PLATS

△ DENOTES AREA AS BEING OFFERED FOR DEDICATION AS PUBLIC RIGHT OF WAY PER THIS MAP.

③ BLOCK NUMBER

RAD RADIAL LINE

L3 COURSE TABLE NUMBER

C2 CURVE TABLE NUMBER

25 LOT NUMBER

PLS PROFESSIONAL LAND SURVEYOR

4500S.F. LOT AREA (EXPRESSED IN SQUARE FEET)

APN 125-16-310-004 CLARK COUNTY ASSESSOR'S NUMBER

S.V.R.E. SIGHT VISIBILITY RESTRICTION EASEMENT

NOTE: NO STRUCTURES OR LANDSCAPING HIGHER THAN 30" ABOVE TOP OF CURB WITHIN S.V.R.E.

LINE DATA TABLE

LINE	DIRECTION	DISTANCE
L1	N89°41'59"W	16.38'
L2	N89°41'59"W	16.38'
L3	N89°41'59"W	29.76'
L4	N01°18'31"W	1.70'

NOTES:

- PURSUANT TO NRS 278.371, ALL REAR LOT CORNERS SHALL BE SET WITH A NAIL AND TAG P.L.S. 8662 ON BLOCK WALL, AND ALL FRONT AND SIDE LOT CORNERS ADJOINING PUBLIC RIGHT OF WAY SHALL BE MARKED BY THE SAWCUTTING OF CURBS ON THE PROLONGATION OF THE PROPERTY LINES.
- TYPICAL LOT AND BUILDING SETBACKS/ UTILITY EASEMENTS DEPICTED UPON SHEET 1 OF 1.
- ANY SUBSEQUENT CHANGES TO THIS MAP SHOULD BE EXAMINED AND MAY BE DETERMINED BY REFERENCE TO THE COUNTY RECORDER'S CUMULATIVE MAP INDEX NRS 278.5695.
- DIRECT VEHICULAR AND/OR PEDESTRIAN ACCESS TO FARM ROAD THROUGH COMMON AREAS FROM ABUTTING LOTS IS STRICTLY PROHIBITED

REFERENCE:

R1 FINAL MAP ELKHORN SPRINGS - UNIT NO. 1, BOOK 60 PAGE 72

R2 FINAL MAP ELKHORN SPRINGS PARCEL 7, BOOK 78 PAGE 13

Orion
 ENGINEERING AND SURVEYING, INC.
 2700 CHANDLER AVE., SUITE B1
 LAS VEGAS, NEVADA 89120

PLOT DATE: 04-14-1997 KEM C:\DWG\003\7002\3702U1FM.DWG

