

030920

00954

MONUMENT TIE MAP

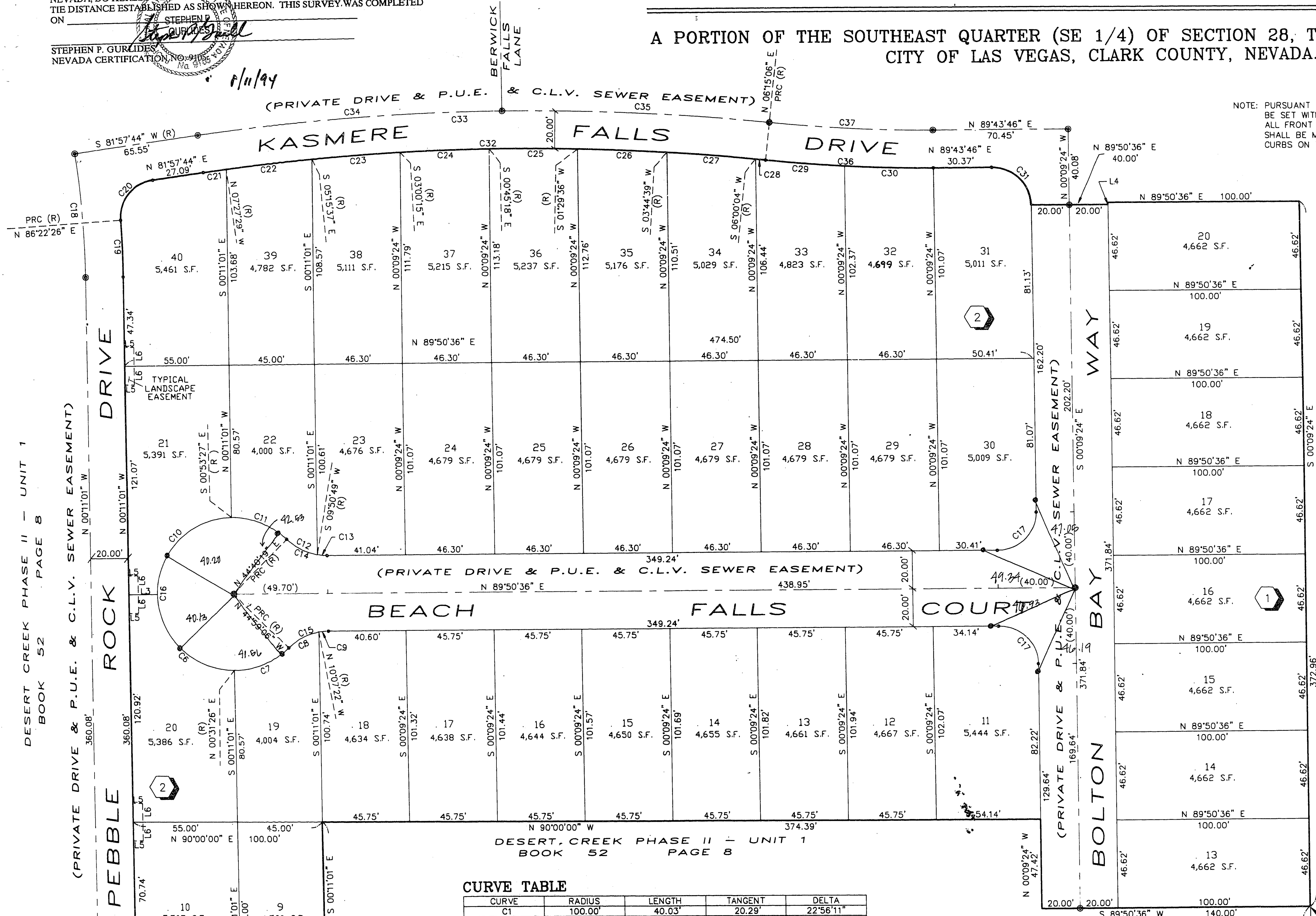
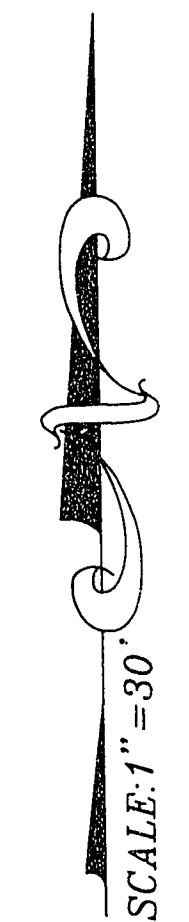
DESERT CREEK PHASE II - UNIT 3

A PORTION OF THE SOUTHEAST QUARTER (SE 1/4) OF SECTION 28, T.19S., R.60E., M.D.M., CITY OF LAS VEGAS, CLARK COUNTY, NEVADA.

I, STEPHEN P. GURLIDES, A PROFESSIONAL LAND SURVEYOR IN THE STATE OF NEVADA, DO HEREBY CERTIFY THAT THE MONUMENTS HAVE BEEN SET AND THE TIE DISTANCE ESTABLISHED AS SHOWN HEREON. THIS SURVEY WAS COMPLETED ON 8/11/94

STEPHEN P. GURLIDES
NEVADA CERTIFICATION NO. 9185

NOTE: PURSUANT TO NRS 278.371, ALL REAR LOT CORNERS SHALL BE SET WITH A NAIL & TAG "PLS 9105" ON BLOCK WALLS AND ALL FRONT OR SIDE LOT CORNERS ADJOINING RIGHT-OF-WAY SHALL BE MARKED BY THE SAWCUTTING OF THE BACK OF CURBS ON THE PROLONGATION OF THE PROPERTY LINES.



COURSE TABLE

LINE	DIRECTION	DISTANCE
L1	N 87°03'49" E	17.82 (R)
L2	S 00°11'01" E	20.00'
L3	N 89°50'36" E	15.00 (R)
L4	N 00°09'24" W	1.12'
L5	N 89°48'59" E	5.00'
L6	N 00°11'01" W	10.00'

- LEGEND**
- T.P.O.B. TRUE POINT OF BEGINNING
 - 2 LOT NUMBER / 40 LOTS
 - S.F. SQUARE FEET
 - 5 BLOCK NUMBER
 - C4 CURVE NUMBER
 - L5 COURSE NUMBER
 - (R) RADIAL LINE
 - FND TYPE III MON., PLS 9105 (UNLESS OTHERWISE INDICATED)
 - SET TYPE III MON., PLS 9105
 - P.U.E. PUBLIC UTILITY EASEMENT

CURVE TABLE

CURVE	RADIUS	LENGTH	TANGENT	DELTA
C1	100.00'	40.03'	20.29'	22°56'11"
C2	130.00'	57.98'	29.48'	25°33'09"
C3	110.00'	15.68'	7.85'	08°10'08"
C4	20.00'	32.96'	21.61'	94°25'12"
C5	120.00'	26.75'	13.43'	12°46'21"
C6	40.50'	63.14'	40.02'	89°19'10"
C7	40.50'	32.17'	16.99'	45°30'32"
C8	30.00'	18.25'	9.42'	34°51'45"
C9	30.00'	5.22'	2.62'	09°57'58"
C10	40.50'	63.10'	39.98'	89°15'56"
C11	40.50'	32.21'	17.01'	45°33'46"
C12	30.00'	18.23'	9.41'	34°49'30"
C13	30.00'	5.24'	2.63'	10°00'12"
C14	30.00'	23.47'	12.37'	44°49'43"
C15	30.00'	23.47'	12.37'	44°49'43"
C16	40.50'	190.61'	40.74'	269°39'25"
C17	20.00'	31.42'	20.00'	90°00'00"
C18	480.00'	65.80'	32.95'	07°51'15"
C19	500.00'	30.04'	15.03'	03°26'33"
C20	20.00'	29.88'	18.52'	85°35'18"
C21	1180.00'	11.94'	5.97'	00°34'47"
C22	1180.00'	45.27'	22.64'	02°11'52"
C23	1180.00'	46.46'	23.24'	02°15'22"
C24	1180.00'	46.30'	23.16'	02°14'57"
C25	1180.00'	46.30'	23.15'	02°14'54"
C26	1180.00'	46.38'	23.18'	02°15'03"
C27	1180.00'	46.48'	23.24'	02°15'25"
C28	1180.00'	5.16'	2.58'	00°15'01"

CURVE TABLE (con't)

CURVE	RADIUS	LENGTH	TANGENT	DELTA
C29	770.00'	41.33'	20.67'	03°04'31"
C30	770.00'	46.32'	23.17'	03°26'49"
C31	20.00'	31.46'	20.04'	90°06'50"
C32	1180.00'	294.29'	147.91'	147°17'22"
C33	1200.00'	299.27'	150.42'	147°17'22"
C34	1200.00'	159.65'	79.94'	07°37'21"
C35	1200.00'	139.63'	69.89'	06°40'01"
C36	770.00'	87.65'	43.87'	06°31'20"
C37	750.00'	85.37'	42.73'	06°31'20"
C38	180.00'	8.80'	4.40'	02°47'58"

ACT DATE BY REVISION

1	11-21-94	RDY	REDRAW MAP SHEET - DELETED ONE LOT
---	----------	-----	------------------------------------

W.O. 4008-3X
SHEET 2 OF 2

9-6-68
Book 58 Page 47