

930218

01058

MONUMENT TIE MAP

DESERT CREEK PHASE II - UNIT 2

A PORTION OF THE SE 1/4 OF SECTION 28, T.19 S., R.60 E., M.D.M. CITY OF LAS VEGAS, CLARK COUNTY, NEVADA.

I, STEPHEN P. GURLIDES, A PROFESSIONAL LAND SURVEYOR IN THE STATE OF NEVADA, DO HEREBY CERTIFY THAT THE MONUMENTS HAVE BEEN SET AND THE DISTANCE ESTABLISHED AS SHOWN HEREON. THIS SURVEY WAS COMPLETED ON 8/11/94

STEPHEN P. GURLIDES  
NEVADA CERTIFICATION NO. 9105 (S)

COURSE TABLE

LINE	BEARING	DISTANCE
L1	S 0°02'24" E	1.12
L2	S 89°43'46" W	30.37
L3	S 81°57'44" W	27.09
L4	N 81°57'44" E	27.09
L5	S 89°50'36" W	14.80
L6	N 89°50'36" E	14.80
L7	N 89°50'36" E (R)	30.00
L8	N 89°43'46" E	5.35
L9	N 20°18'41" E, PRC (R)	

CURVE TABLE

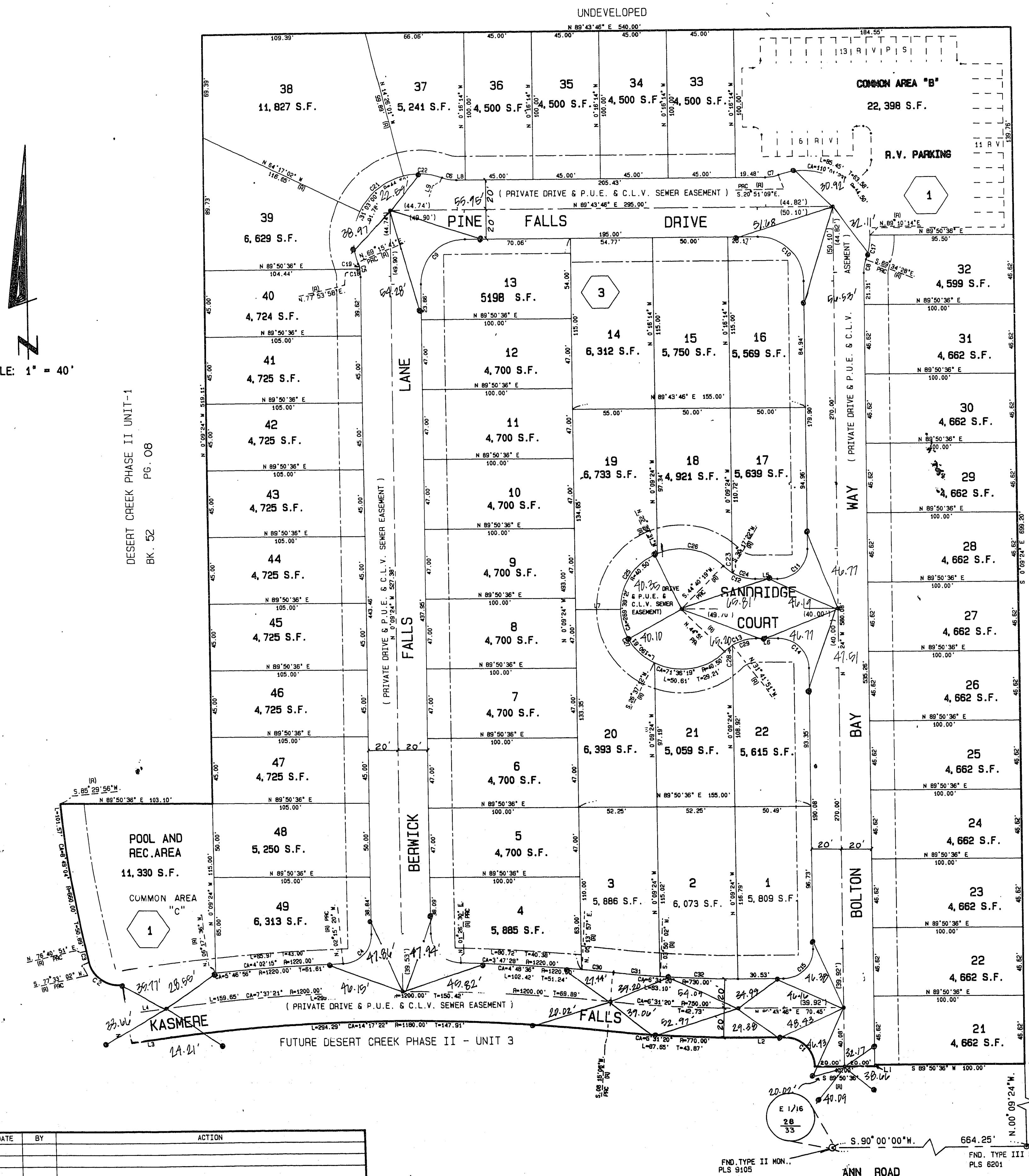
CURVE	ARC	DELTA	RADIUS	TAN LENGTH
C1	31.46	90°38'50"	20.00	20.04
C2	29.89	85°35'18"	20.00	18.52
C3	7.59	0°52'11"	500.00	3.75
C4	20.88	87°34'53"	20.00	19.28
C5	9.34	20°34'55"	28.00	4.72
C6	9.34	20°34'55"	28.00	4.72
C7	9.34	20°34'55"	28.00	4.72
C8	9.34	20°34'55"	28.00	4.72
C9	47.08	89°53'10"	30.00	29.94
C10	47.18	90°00'50"	30.00	30.08
C11	31.42	90°00'00"	20.00	20.00
C12	23.47	44°48'43"	20.00	12.31
C13	23.47	44°48'43"	30.00	12.31
C14	31.42	90°00'00"	20.00	20.00
C15	31.38	89°53'10"	20.00	19.96
C16	30.86	88°24'07"	20.00	19.43
C17	16.51	21°15'17"	44.50	6.35
C18	5.42	11°56'38"	28.00	2.72
C19	5.92	8°38'18"	28.00	1.86
C20	36.08	48°27'17"	44.50	19.10
C21	38.72	49°51'51"	44.50	20.68
C22	26.99	34°44'42"	44.50	13.92
C23	7.53	14°22'57"	30.00	3.78
C24	15.84	30°26'48"	30.00	6.18
C25	47.71	87°29'52"	40.50	27.08
C26	47.59	87°19'51"	40.50	26.97
C27	44.89	83°13'24"	40.50	24.93
C28	6.96	13°17'18"	30.00	3.49
C29	16.51	31°32'27"	44.50	8.47
C30	21.79	1°01'08"	1220.00	10.85
C31	30.80	2°25'03"	730.00	15.49
C32	52.39	4°06'18"	730.00	28.16
C33	37.15	1°44'40"	1220.00	18.56

LEGEND

- T.P.O.B. TRUE POINT OF BEGINNING
- 2 LOT NUMBER/RESIDENTIAL LOTS = 51  
COMMON AREA LOTS = 2  
TOTAL LOTS = 53
- 3 BLOCK NUMBER
- L2 COURSE NUMBER
- C3 CURVE NUMBER
- BUILDING SETBACK LINE MINIMUMS:  
FRONT = 16' / CORNER = 10'  
SIDE = 5' / REAR = 15'
- ⊙ FOUND POINT AS INDICATED
- SET TYPE III MON., P.L.S. 9105
- (R) RADIAL LINE
- P.U.E. PUBLIC UTILITY EASEMENT

NOTE: PURSUANT TO NRS 278.371, ALL REAR LOT CORNERS SHALL BE SET WITH A NAIL & TAG P.L.S. 9105 ON BLOCK WALL, AND ALL FRONT OR SIDE LOT CORNERS ADJOINING RIGHT-OF-WAY SHALL BE MARKED BY THE SANCUTTING OF THE BACK OF CURBS ON THE PROLONGATION OF THE PROPERTY LINES.

W.O. 4008-2  
SHEET 2 OF 2



SCALE: 1" = 40'

DESERT CREEK PHASE II UNIT-1  
BK. 52 PG. 08

DESERT CREEK UNIT-3  
BK. 49 - PG. 04

ACT	DATE	BY	ACTION

FND. TYPE II MON., PLS 9105  
ANN ROAD  
FND. TYPE III MON., PLS 6201  
BASIS OF BEARING  
FND. WELL MON. RLS 2050

9-6-04 BOOK 55 PAGE 60  
058-4074-II-2