

MONUMENT TIE MAP

DESERT CREEK PHASE II - UNIT 2

A PORTION OF THE SE 1/4 OF SECTION 28, T.19 S., R.60 E., M.D.M. CITY OF LAS VEGAS, CLARK COUNTY, NEVADA.

I, STEPHEN P. GURLIDES, A PROFESSIONAL LAND SURVEYOR IN THE STATE OF NEVADA, DO HEREBY CERTIFY THAT THE MONUMENTS HAVE BEEN SET AND THE TIE DISTANCE ESTABLISHED AS SHOWN HEREON. THIS SURVEY WAS COMPLETED ON

STEPHEN P. GURLIDES NEVADA CERTIFICATION NO. 9105

Signature of Stephen P. Gurlides

9/8/94

COURSE TABLE

LINE	BEARING	DISTANCE
L1	S 0°09'24" E	1.12
L2	S 89°43'46" W	36.37
L3	S 81°57'44" W	27.09
L4	N 81°57'44" E	27.09
L5	S 89°50'36" W	14.80
L6	N 89°50'36" E	14.80
L7	N 89°50'36" E	30.00
L8	N 89°43'46" E	5.95
L9	N 20°18'41" E	PRC (R)

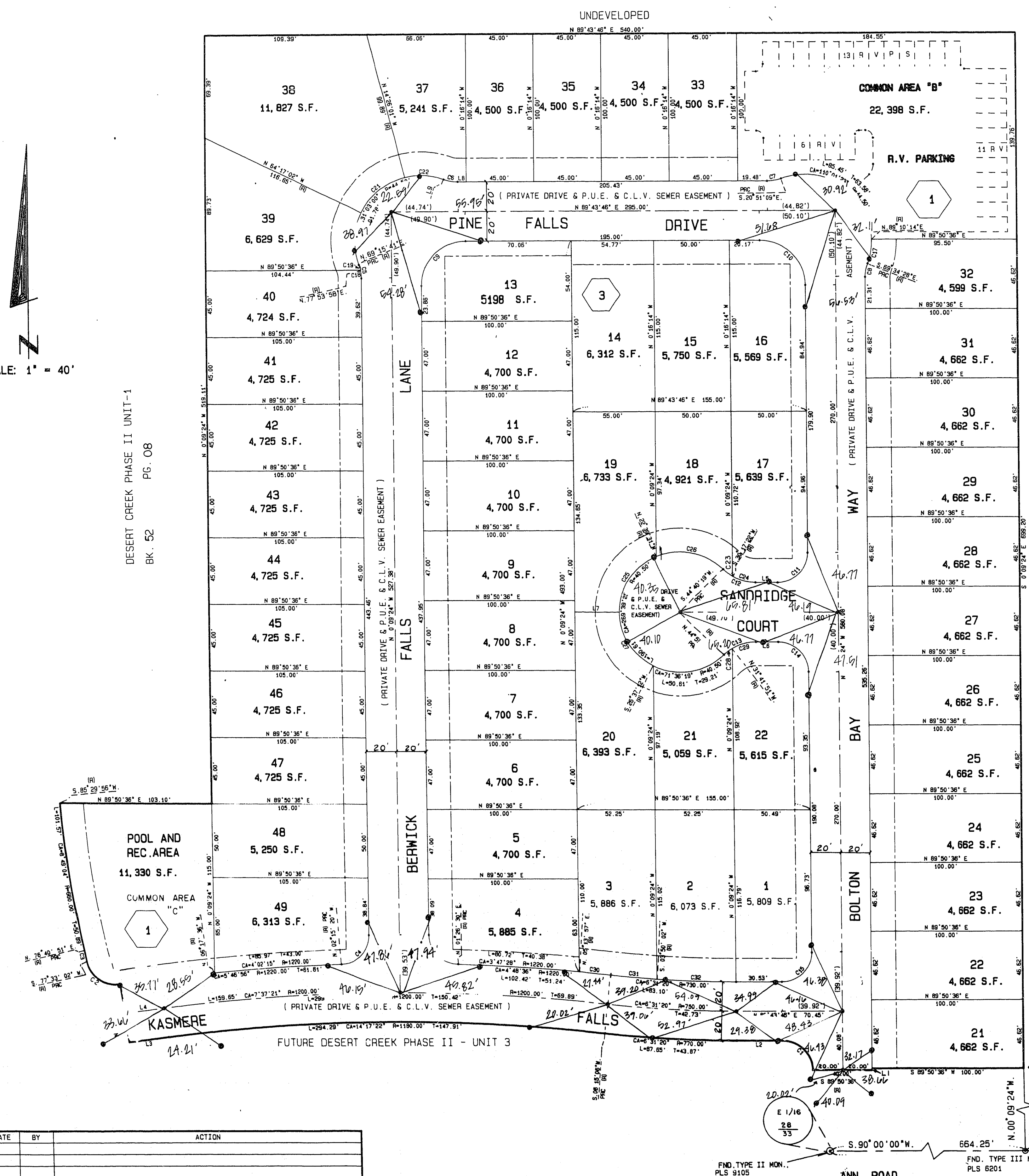
CURVE TABLE

CURVE	ARC	DELTA	RADIUS	TAN LENGTH
C1	31.46	80°05'50"	20.00	20.04
C2	29.86	85°25'18"	20.00	18.32
C3	7.59	0°52'11"	300.00	3.79
C4	30.68	87°54'03"	20.00	19.28
C5	9.34	20°34'55"	26.00	4.72
C6	9.34	20°34'55"	26.00	4.72
C7	9.34	20°34'55"	26.00	4.72
C8	9.34	20°34'55"	26.00	4.72
C9	47.06	89°53'10"	30.00	29.84
C10	47.18	90°06'50"	30.00	30.06
C11	31.42	80°05'50"	20.00	20.00
C12	23.47	44°49'43"	30.00	12.37
C13	23.47	44°49'43"	30.00	12.37
C14	31.42	80°05'50"	20.00	20.00
C15	31.38	89°53'10"	20.00	19.96
C16	30.86	88°24'07"	20.00	19.45
C17	15.51	21°15'17"	44.50	8.36
C18	5.42	11°56'36"	28.00	2.72
C19	3.92	8°38'16"	28.00	1.96
C20	36.08	46°27'17"	44.50	19.10
C21	38.72	49°51'01"	44.50	20.68
C22	26.99	34°44'42"	30.00	13.92
C23	7.53	14°22'57"	30.00	3.79
C24	15.94	30°26'46"	30.00	8.16
C25	47.71	67°29'53"	40.50	27.06
C26	47.59	67°19'51"	40.50	26.97
C27	44.89	65°13'24"	40.50	24.93
C28	15.96	13°11'16"	30.00	3.49
C29	16.51	31°52'27"	30.00	8.47
C30	21.70	1°01'08"	1220.00	10.85
C31	30.80	1°25'03"	730.00	15.40
C32	52.30	1°08'16"	730.00	29.16
C33	37.15	1°44'40"	1220.00	18.56

LEGEND

- T.P.O.B. TRUE POINT OF BEGINNING
- 2 LOT NUMBER/RESIDENTIAL LOTS = 51  
COMMON AREA LOTS = 2  
TOTAL LOTS = 53
- 3 BLOCK NUMBER
- L2 COURSE NUMBER
- C3 CURVE NUMBER
- BUILDING SETBACK LINE MINIMUMS:  
FRONT = 16' / CORNER = 10'  
SIDE = 5' / REAR = 15'
- ⊙ FOUND POINT AS INDICATED
- SET TYPE III MON., P.L.S. 9105
- (R) RADIAL LINE
- P.U.E. PUBLIC UTILITY EASEMENT

NOTE: PURSUANT TO NRS 278.371, ALL REAR LOT CORNERS SHALL BE SET WITH A NAIL & TAG P.L.S. 9105 ON BLOCK WALL, AND ALL FRONT OR SIDE LOT CORNERS ADJOINING RIGHT-OF-WAY SHALL BE MARKED BY THE SAWCUTTING OF THE BACK OF CURBS ON THE PROLONGATION OF THE PROPERTY LINES.



SCALE: 1" = 40'

DESERT CREEK PHASE II UNIT-1 BK. 52 PG. 08

DESERT CREEK UNIT-3 BK. 49 - PG. 04

ACT	DATE	BY	ACTION

W.O. 4008-2 SHEET 2 OF 2