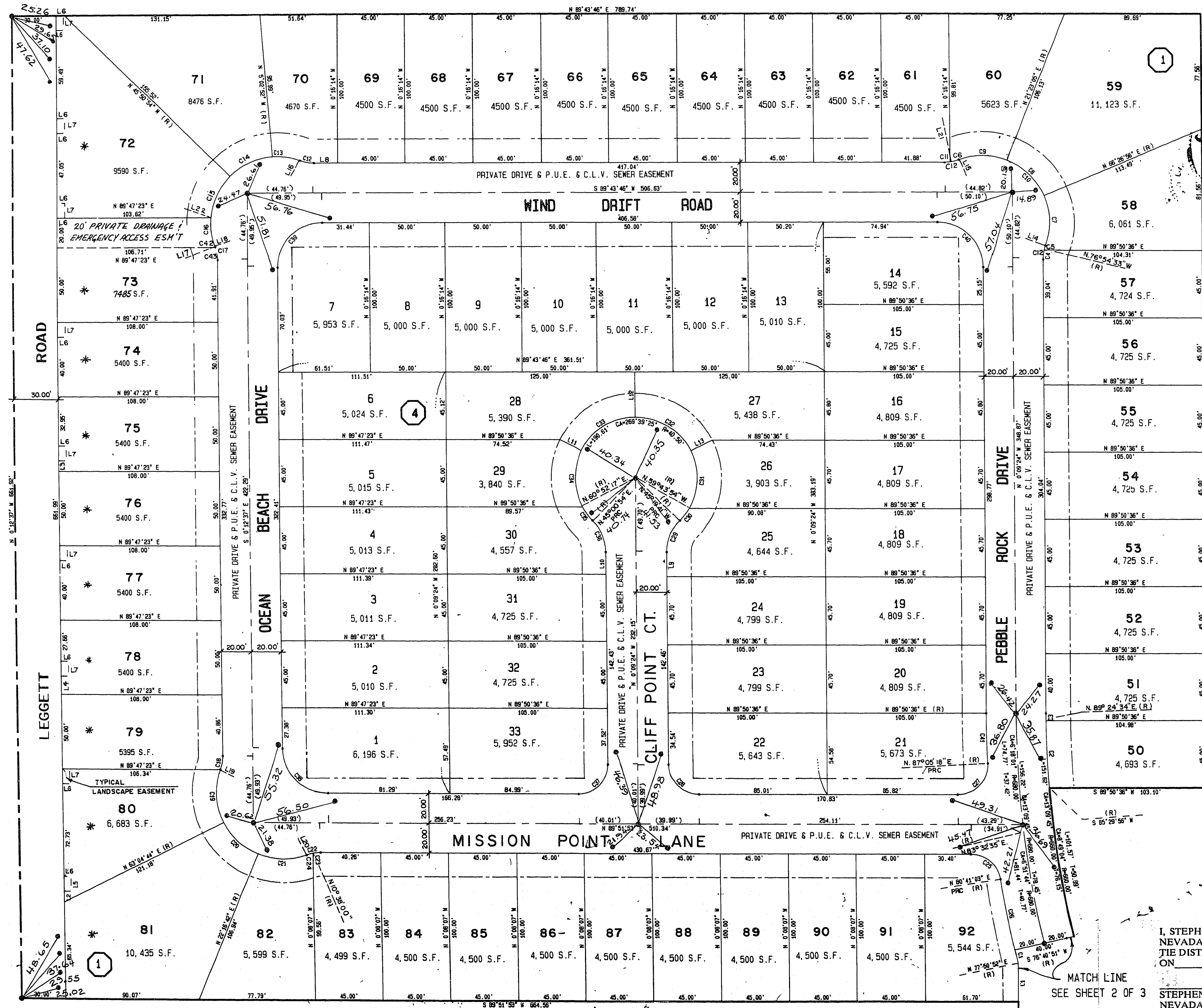


DESERT CREEK PHASE II - UNIT 1
 A PORTION OF THE SE1/4 OF SECTION 28, T.19 S., R.60 E., M.D.M.,
 CITY OF LAS VEGAS, CLARK COUNTY, NEVADA.
MONUMENT TIE MAP

UNDEVELOPED



CURVE TABLE (THIS SHEET ONLY)

CURVE	ARC	DELTA	RADIUS	TAN LENGTH
C1	9.27	1°10'51"	450.00	4.58
C2	45.05	3°54'36"	550.00	22.03
C3	5.00	0°28'02"	650.00	2.50
C4	6.01	1°14'50"	26.00	3.02
C5	3.33	7°20'05"	25.00	1.57
C6	6.21	1°54'21"	25.00	3.12
C7	34.16	4°58'36"	44.50	17.97
C8	35.00	4°53'51"	44.50	18.46
C9	32.00	4°54'14"	44.50	17.19
C10	101.06	13°16'41"	44.50	56.28
C11	3.13	6°53'34"	26.00	1.57
C12	9.34	2°34'55"	26.00	4.72
C13	19.70	2°52'23.5"	44.50	10.01
C14	31.59	4°48'00"	44.50	15.55
C15	31.15	4°02'08"	44.50	15.24
C16	19.29	2°49'50"	44.50	9.80
C17	9.34	2°34'55"	26.00	4.72
C18	9.34	2°34'55"	26.00	4.72
C19	36.73	4°17'34"	44.50	19.48
C20	31.69	4°48'02"	44.50	15.55
C21	33.39	4°29'44"	44.50	17.53
C22	9.34	2°34'55"	26.00	4.72
C23	4.76	10°29'53"	26.00	2.39
C24	4.58	10°05'02"	26.00	2.29
C25	28.21	8°49'10"	20.00	17.03
C26	48.51	4°50'11"	700.00	24.45
C27	32.39	9°46'35"	20.00	20.99
C28	31.41	8°58'43"	20.00	19.99
C29	23.47	44°49'43"	30.00	12.37
C30	10.18	14°24'13"	40.50	5.12
C31	40.23	5°54'24"	40.50	21.95
C32	44.90	6°31'05"	40.50	25.07
C33	44.75	6°31'17"	40.50	24.97
C34	39.35	5°40'03"	40.50	21.38
C35	11.21	15°51'23"	40.50	5.84
C36	23.47	44°49'43"	30.00	12.37
C37	31.42	9°01'17"	20.00	20.01
C38	47.06	8°55'30"	30.00	29.96
C39	47.05	8°55'23"	30.00	29.97
C40	47.18	9°05'50"	30.00	30.05
C41	33.66	2°45'18"	700.00	16.83
C42	1.12	0°22'27.34"	26.00	0.56
C43	8.22	18°07'21"	26.00	4.15

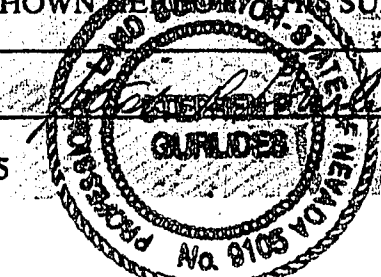
COURSE TABLE (THIS SHEET ONLY)

LINE	BEARING	DISTANCE
L1	S 0°11'01" E	26.08
L2	N 0°12'37" W	7.38
L3	N 0°12'37" W	7.05
L4	N 0°12'37" W	4.34
L5	N 0°12'37" E	10.00
L6	N 89°47'23" E	5.00
L7	N 0°12'37" W	10.00
L8	N 89°45'46" E	5.15
L9	N 0°09'24" W	16.51
L10	S 0°09'24" E	14.92
L11	S 83°27'40" E (R)	16.00
L12	N 0°09'24" W (R)	30.25
L13	N 83°21'42" E (R)	16.00
L14	N 69°54'28" W	PRC
L15	N 20°51'09" W	PRC
L16	N 29°46'41" E	PRC
L17	N 79°40'02" E	PRC
L18	N 69°12'28" E	PRC
L19	N 69°57'42" W	PRC
L20	N 29°46'41" E	PRC
L21	N 0°09'24" W	(R)
L22	N 84°57'12" W	(R)

* DIRECT VEHICULAR ACCESS TO LEGGETT ROAD FROM LOTS 50 THRU 60, BLOCK 5 IS PROHIBITED.

I, STEPHEN P. GURLIDES, A PROFESSIONAL LAND SURVEYOR IN THE STATE OF NEVADA, DO HEREBY CERTIFY THAT THE MONUMENTS HAVE BEEN SET AND THE TIE DISTANCE ESTABLISHED AS SHOWN HEREON. THIS SURVEY WAS COMPLETED ON

STEPHEN P. GURLIDES
 NEVADA CERTIFICATION NO. 9105



3/23/13

W.O. 4008
 SHEET 3 OF 3

ACT	DATE	BY	REVISION
1	4-6-11	SPH	REVISED LOTS 31-58, BLOCK 5
2	4-24-11	TZ	REVISED BNDY PER CLV - ADDED DRAINAGE EASE.
3	10-8-11	SPH	REDRAW SECOND SHEET
4	11-22-11	SPH	ADDED PRIVATE DRAINAGE ESM'T

9-6-65

BK. 52 PG. 08
 058-4074-II-1