

DESERT CREEK - UNIT 2
 A POR. OF THE SE1/4 OF THE SE1/4 OF SEC. 28, T. 19 S., R. 60 E., M.D.M.,
 CITY OF LAS VEGAS, CLARK COUNTY, NEVADA.
MONUMENT TIE MAP

CURVE TABLE (THIS SHEET ONLY)

LINE	ARC	CHORD	ANGLE	AREA
1	1.00	1.00	90.00	0.79
2	1.00	1.00	90.00	0.79
3	1.00	1.00	90.00	0.79
4	1.00	1.00	90.00	0.79
5	1.00	1.00	90.00	0.79
6	1.00	1.00	90.00	0.79
7	1.00	1.00	90.00	0.79
8	1.00	1.00	90.00	0.79
9	1.00	1.00	90.00	0.79
10	1.00	1.00	90.00	0.79
11	1.00	1.00	90.00	0.79
12	1.00	1.00	90.00	0.79
13	1.00	1.00	90.00	0.79
14	1.00	1.00	90.00	0.79
15	1.00	1.00	90.00	0.79
16	1.00	1.00	90.00	0.79
17	1.00	1.00	90.00	0.79
18	1.00	1.00	90.00	0.79
19	1.00	1.00	90.00	0.79
20	1.00	1.00	90.00	0.79
21	1.00	1.00	90.00	0.79
22	1.00	1.00	90.00	0.79
23	1.00	1.00	90.00	0.79
24	1.00	1.00	90.00	0.79
25	1.00	1.00	90.00	0.79
26	1.00	1.00	90.00	0.79
27	1.00	1.00	90.00	0.79
28	1.00	1.00	90.00	0.79
29	1.00	1.00	90.00	0.79
30	1.00	1.00	90.00	0.79
31	1.00	1.00	90.00	0.79
32	1.00	1.00	90.00	0.79
33	1.00	1.00	90.00	0.79
34	1.00	1.00	90.00	0.79

COURSE TABLE (THIS SHEET ONLY)

LINE	BEARING	DISTANCE
1	N 89° 52' 13" W	5.00
2	N 0° 07' 47" E	1.00
3	N 0° 07' 47" E	5.00
4	N 0° 07' 47" E	14.00
5	N 0° 07' 47" E	5.14
6	N 0° 07' 47" E	14.00
7	N 0° 07' 47" E	5.14
8	N 0° 07' 47" E	5.14
9	N 0° 07' 47" E	5.14
10	N 0° 07' 47" E	5.14
11	N 89° 43' 46" E	26.74
12	N 89° 43' 46" E	5.36
13	N 0° 07' 47" E	14.01

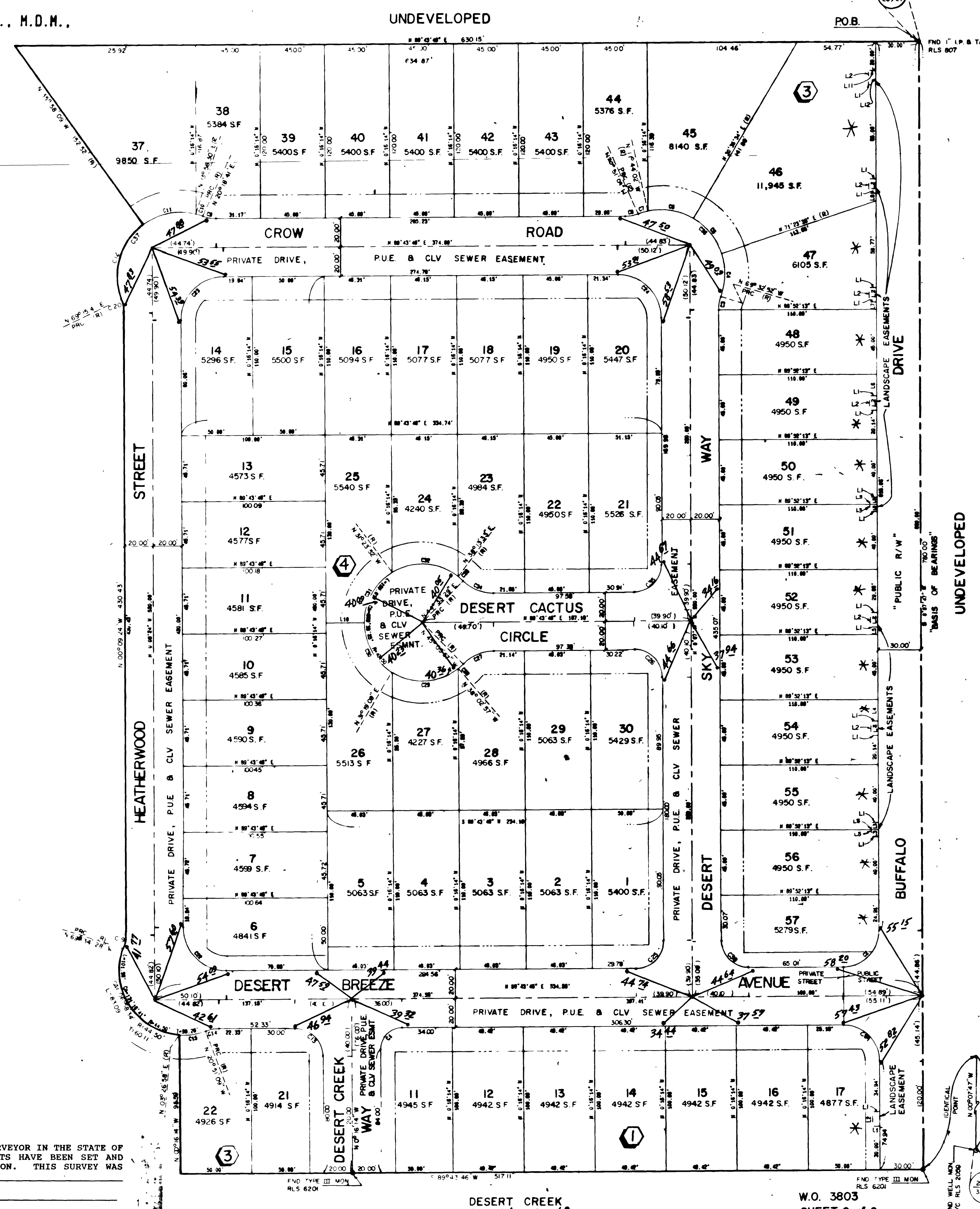
LEGEND

- P.O.B. POINT OF BEGINNING
- 3 LOT NUMBER / TOTAL LOTS = 60
- (1) BLOCK NUMBER
- C2 CURVE NUMBER
- L3 COURSE NUMBER
- (R) RADIAL LINE
- BUILDING SETBACK LINE MINIMUMS:
FRONT = 16' CORNER = 10'
- FOUND POINT AS INDICATED
- SET TYPE III MONUMENT FOR CLARK COUNTY IMPROVEMENT STANDARDS, REVISED APRIL, 1986 LS 6201
- * DIRECT VEHICULAR ACCESS TO BUFFALO DRIVE FROM THE ADJUTING LOTS IS PROHIBITED.
- TIE - BRASS CAP IN TOP OF CURB

I, GENE KRAMEBAUER, A PROFESSIONAL LAND SURVEYOR IN THE STATE OF NEVADA, DO HEREBY CERTIFY THAT THE MONUMENTS HAVE BEEN SET AND THE TIE DISTANCE ESTABLISHED AS SHOWN HEREON. THIS SURVEY WAS COMPLETED ON 8/6/90.

GENE D. KRAMEBAUER, P.L.S.
 LICENSED SURVEYOR LICENSE NO.: 6201

NO.	DATE	BY	ACTION
1	1/7/90	KMJ	Misc Rev Per CCV
2	6/6/90	KMJ	REV Boundary



DESERT CREEK UNIT 2
 CERTIFICATE OF AMENDMENT
 STREET NAME CHANGED FROM
 CROW ROAD TO
 RAVEN HILLS DRIVE

BOOK: 46
 PAGE: 66
 DATE: 7/26/90

CLARK COUNTY NEVADA
 JOAN L SWIFT, RECORDER
 RECORDED AT REQUEST OF:
 VTN

87-25-38 12:38 890
 BOOK: 508725 INST: 08641
 PER PLAT 6.00 RPPT:
 COPIES OF THIS MAP NOT BEING COMPARED TO THE ORIGINAL

DESERT CREEK
 BK 46 PG 42

W.O. 3803
 SHEET 2 of 2

BK 46 PG 66
 058-4074-2 9-6-57

