

**DESERT CREEK**  
 A PORTION OF THE SOUTHEAST QUARTER (SE1/4) OF THE SOUTHEAST QUARTER (SE1/4)  
 OF SECTION 28, T.19S., R.60E., M.D.M.,  
 CITY OF LAS VEGAS, CLARK COUNTY, NEVADA.

**MONUMENT TIE MAP**

**CURVE TABLE**

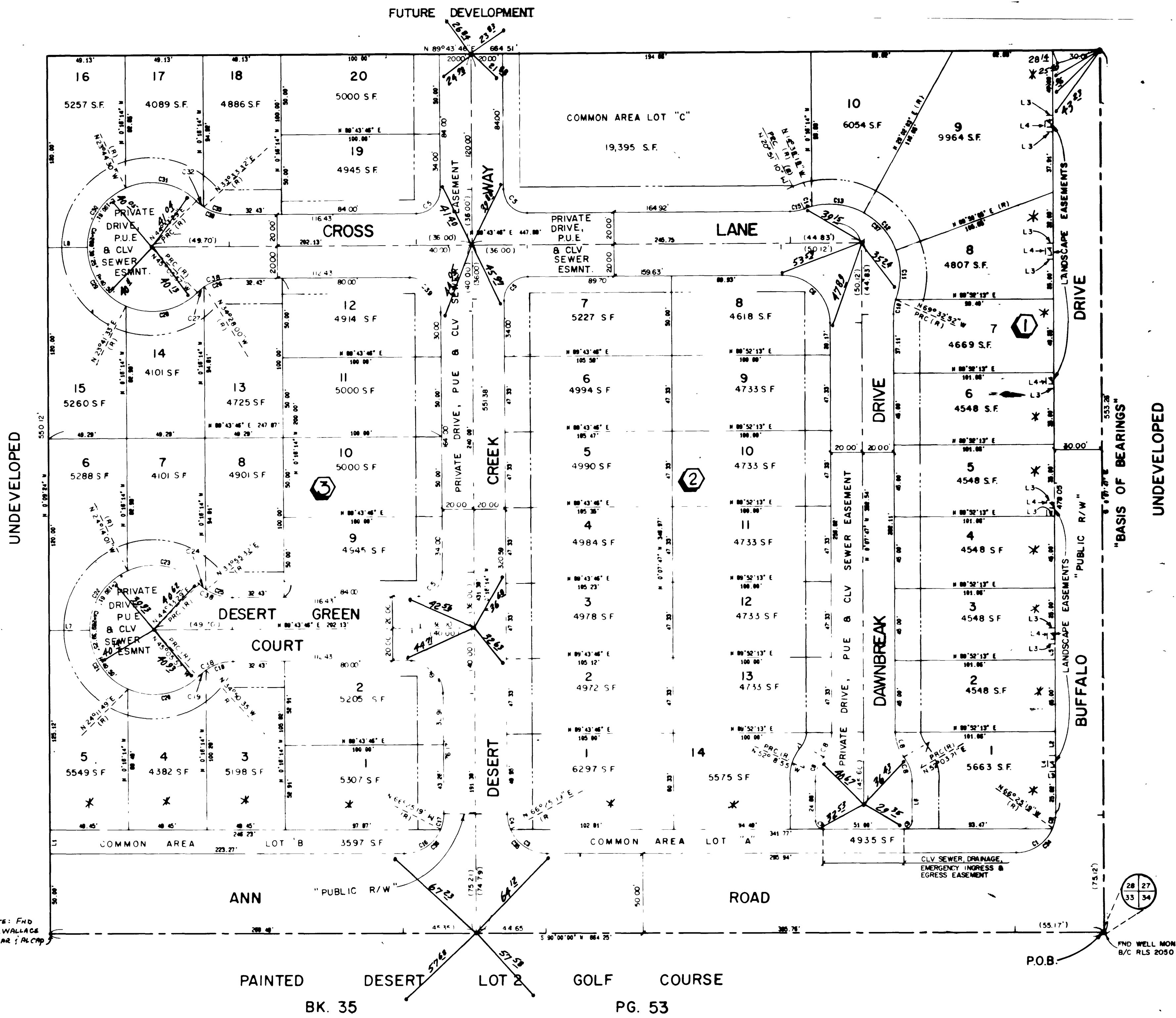
CURVE	ARC	DELTA	RADIUS	TAN LENGTH
C1	28.98	66°25'19"	25.00	16.37
C2	10.34	23°42'28"	25.00	5.25
C3	28.98	66°25'19"	25.00	16.37
C4	10.17	23°18'27"	25.00	5.18
C5	32.5	90°00'00"	16.00	16.00
C6	47.20	90°00'27"	30.00	30.07
C7	7.84	89°50'13"	5.00	4.99
C8	16.50	37°48'52"	25.00	8.56
C9	7.87	90°07'47"	5.00	5.01
C10	9.34	20°34'50"	26.00	4.72
C11	31.55	40°37'03"	44.50	16.47
C12	31.69	40°48'02"	44.50	16.55
C13	33.92	43°40'21"	44.50	17.83
C14	4.83	6°12'51"	44.50	2.42
C15	9.34	20°34'50"	26.00	4.72
C16	28.98	66°25'19"	25.00	16.37
C17	10.41	23°50'55"	25.00	5.28
C18	18.10	34°34'21"	30.00	9.34
C19	5.37	10°15'22"	30.00	2.69
C20	48.98	69°17'46"	40.50	17.98
C21	46.30	65°31'57"	40.50	16.07
C22	46.88	66°02'13"	40.50	16.32
C23	46.53	66°47'30"	40.50	17.73
C24	5.57	10°37'56"	30.00	2.79
C25	17.91	34°11'46"	30.00	9.23
C26	17.91	34°11'46"	30.00	9.23
C27	5.57	10°37'56"	30.00	2.79
C28	46.63	68°47'30"	40.50	17.73
C29	46.88	66°02'13"	40.50	16.32
C30	47.03	68°31'44"	40.50	16.57
C31	46.28	68°17'58"	40.50	17.47
C32	5.78	10°58'57"	30.00	2.89
C33	17.71	33°48'46"	30.00	9.12
C34	38.33	60°07'07"	25.00	25.86
C35	39.15	60°43'46"	25.00	24.88
C36	39.39	60°16'14"	25.00	25.12
C37	101.98	131°18'17"	44.50	96.34
C38	23.47	44°48'43"	30.00	12.37
C39	1.42	90°00'00"	20.00	20.00

**COURSE TABLE**

LINE	BEARING	DISTANCE
L1	N 0°09'24" W	15.00
L2	N 0°07'47" W	15.00
L3	S 89°52'13" W	5.00
L4	N 0°07'47" W	10.00
L5	N 0°07'47" W	10.00
L6	N 0°07'47" W	25.00
L7	N 89°43'46" E (R)	25.00
L8	N 89°43'46" E (R)	25.00

**LEGEND**

- P.O.B. POINT OF BEGINNING
- 8 LOT NUMBER / RESIDENTIAL LOTS = 44  
COMMON AREA LOTS = 3  
TOTAL LOTS = 47
- ① BLOCK NUMBER
- T2 COURSE NUMBER
- C3 CURVE NUMBER
- BUILDING SETBACK LINE MINIMUMS:  
FRONT = 16' / CORNER = 10'
- FOUND POINT AS INDICATED
- SET 5/8" REBAR & ALUM. CAP W/BRASS  
CAP REF., L.S. 6201
- (R) RADIAL LINE
- P.U.E. PUBLIC UTILITY EASEMENT
- TIE - BRASS CAP IN T.C.



Notes: Fnd G.C. WALLACE REBAR 1/4" dia

\* NOTE  
 DIRECT VEHICULAR ACCESS TO ANN ROAD AND BUFFALO DRIVE FROM THE LOTS ABUTTING THE ADJACENT COMMON AREA IS PROHIBITED.

I, GENE KRAMEBAUER, A PROFESSIONAL LAND SURVEYOR IN THE STATE OF NEVADA, DO HEREBY CERTIFY THAT THE MONUMENTS HAVE BEEN SET AND THE TIE DISTANCE ESTABLISHED AS SHOWN HEREON. THIS SURVEY WAS COMPLETED ON 8/6/91.

GENE D. KRAMEBAUER, P.L.S.  
 NEVADA SURVEYOR LICENSE NO.: 6201

ACT	DATE	BY	ACTION
5	9/27/89	KMJ	ADD SEWER, DRAIN, EMERG INGRESS EGRESS ESMT
4	8/11/89	KMJ	REVISE LOT NUMBER TABULATION
3	8/89	KMJ	REVISE BOUNDARY & BUILDING SETBACK LINES

2444 8/6/91 9-6-69 BK. 44 PG. 42 058-4074

