

DESERT CREEK
 A PORTION OF THE SOUTHEAST QUARTER (SE1/4) OF THE SOUTHEAST QUARTER (SE1/4)
 OF SECTION 28, T.19S., R.60E., M.D.M.,
 CITY OF LAS VEGAS, CLARK COUNTY, NEVADA.

MONUMENT TIE MAP

CURVE TABLE

CURVE	ARC	DELTA	RADIUS	TAN LENGTH
C1	28.96	66°25'15"	25.00	15.37
C2	19.34	23°42'28"	25.00	5.25
C3	28.96	66°25'15"	25.00	15.37
C4	10.17	23°18'27"	25.00	5.16
C5	15.13	30°00'00"	18.00	10.00
C6	47.20	90°08'27"	30.00	30.67
C7	7.84	89°52'13"	5.00	4.99
C8	16.30	37°48'52"	25.00	8.56
C9	7.87	90°07'47"	5.00	5.01
C10	9.34	20°34'55"	26.00	4.70
C11	31.55	40°37'03"	44.50	16.47
C12	31.89	40°48'02"	44.50	16.55
C13	33.95	43°40'21"	44.50	17.83
C14	4.83	6°12'51"	44.50	2.42
C15	9.34	20°34'55"	26.00	4.72
C16	28.96	66°25'15"	25.00	15.37
C17	10.41	23°50'55"	25.00	5.28
C18	18.10	34°34'21"	30.00	9.34
C19	5.37	10°15'22"	30.00	2.89
C20	48.98	09°17'46"	40.50	17.99
C21	46.32	65°31'53"	40.50	26.07
C22	46.68	68°02'13"	40.50	26.32
C23	48.03	68°47'30"	40.50	27.73
C24	5.57	10°37'56"	30.00	2.79
C25	17.91	34°11'46"	30.00	9.23
C26	17.91	34°11'46"	30.00	9.23
C27	5.57	10°37'56"	30.00	2.79
C28	48.03	68°47'30"	40.50	27.73
C29	46.68	68°02'13"	40.50	26.32
C30	47.03	68°31'44"	40.50	26.57
C31	48.28	68°17'56"	40.50	27.47
C32	5.76	10°59'57"	30.00	2.89
C33	17.71	33°48'46"	30.00	9.12
C34	39.33	30°07'47"	25.00	25.06
C35	39.15	89°47'46"	25.00	24.88
C36	39.39	90°16'14"	25.00	25.12
C37	101.98	131°18'17"	44.50	38.34
C38	23.47	44°48'45"	30.00	12.37
C39	19.42	30°00'00"	30.00	10.00

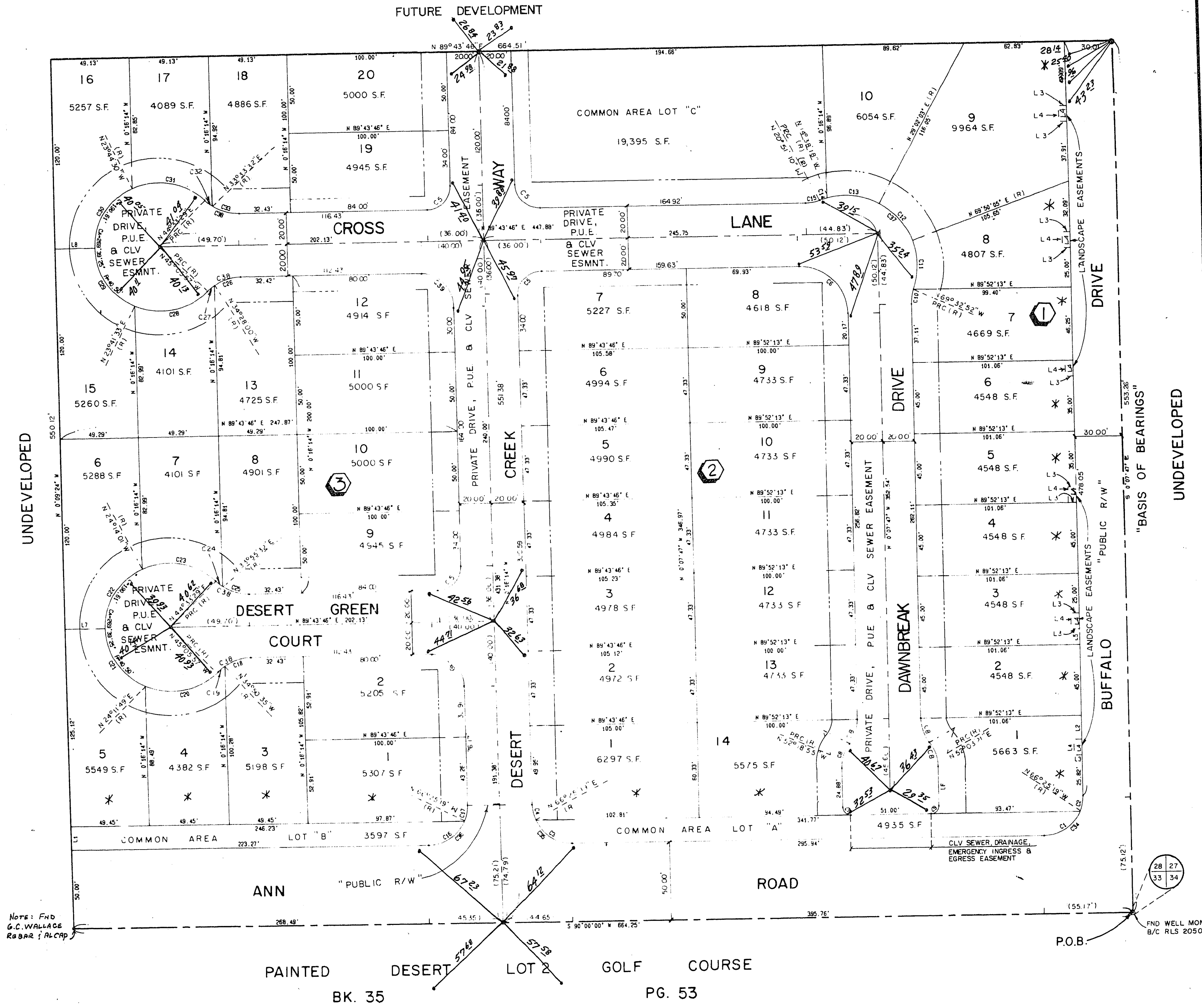
COURSE TABLE

LINE	BEARING	DISTANCE
L1	N 0°09'24" W	15.00
L2	N 0°07'47" W	15.00
L3	S 89°50'13" W	5.00
L4	N 0°07'47" W	10.00
L5	N 0°07'47" W	10.00
L6	N 0°07'47" W	25.00
L7	N 89°43'46" E	91.25
L8	N 89°43'46" E	20.00

LEGEND

- P.O.B. POINT OF BEGINNING
- 8 LOT NUMBER / RESIDENTIAL LOTS = 44
COMMON AREA LOTS = 8
TOTAL LOTS = 47
- ① BLOCK NUMBER
- T2 COURSE NUMBER
- C3 CURVE NUMBER
- BUILDING SETBACK LINE MINIMUMS:
FRONT = 16' / CORNER = 10'
- FOUND POINT AS INDICATED
- SET 5/8" REBAR & ALUM. CAP W/BRASS
CAP REF., L.S. 6201
- (R) RADIAL LINE
- P.U.E. PUBLIC UTILITY EASEMENT
- TIE - BRASS CAP IN T.C.

SCALE: 1" = 40'



Note: Find G.C. WALLACE Rebar in PLCP

Find Well Mon B/C RLS 2050

*** NOTE**
 DIRECT VEHICULAR ACCESS TO ANN ROAD AND BUFFALO DRIVE FROM THE LOTS ABUTTING THE ADJACENT COMMON AREA IS PROHIBITED.

I, GENE KRAMETBAUER, A PROFESSIONAL LAND SURVEYOR IN THE STATE OF NEVADA, DO HEREBY CERTIFY THAT THE MONUMENTS HAVE BEEN SET AND THE TIE DISTANCES ESTABLISHED AS SHOWN HEREON. THIS SURVEY WAS COMPLETED ON 3/2/92.

GENE D. KRAMETBAUER, S.P.L.S.
 NEVADA CERTIFICATION NO. 6201

W.O. 3803
 SHEET 2 of 2

ACT	DATE	BY	ACTION
5	9/27/89	KMJ	ADD SEWER, DRAIN, EMERG. INGRESS EGRESS ESMT
4	8/1/89	KMJ	Revise lot number tabulation
3	1/8/89	KMJ	REVISE CROSS ROADS TIE TO DAWNBREAK DR. DAWNBREAK LOOP TO CROSS ROADS TIE. ONE TREE DR TO HEADBROOK ST. AND PLOTTING W/O DESERT BREEZE AVE
2	8/17/89	KMJ	REVISE BOUNDARY & BUILDING SETBACK LINES

3/2/92 9-6-68 BK. 44, PG. 42 058-4074