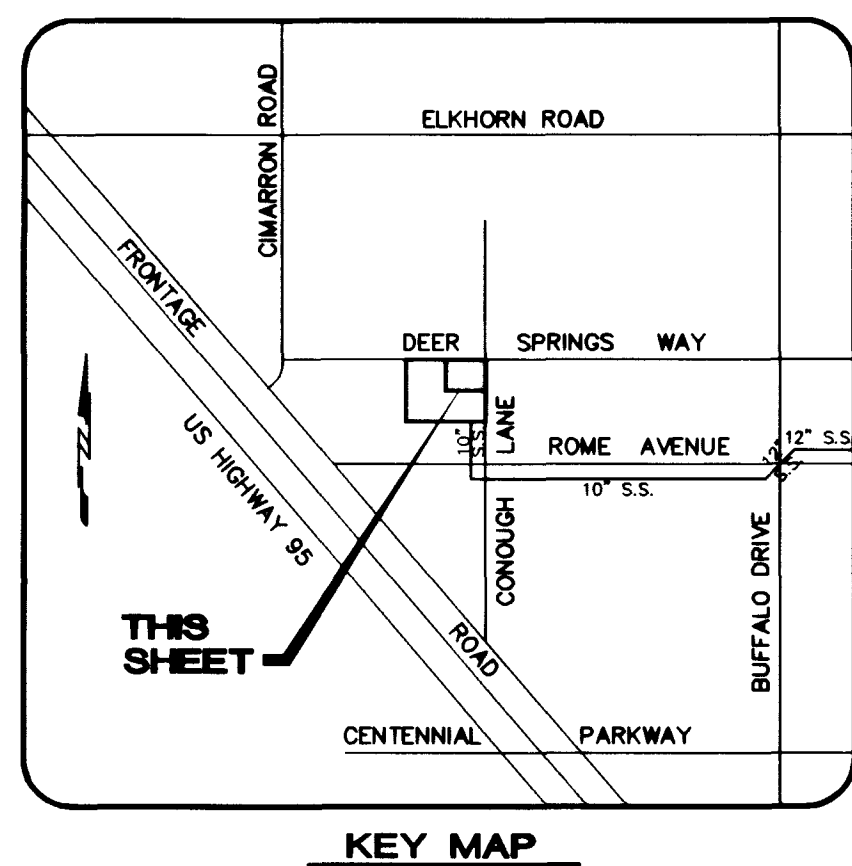
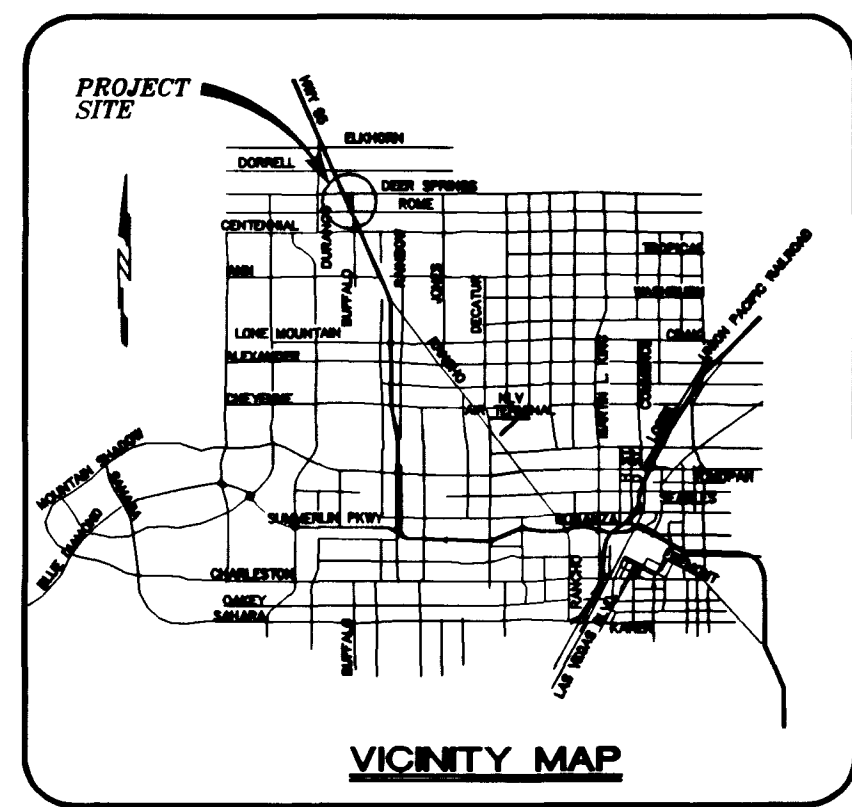
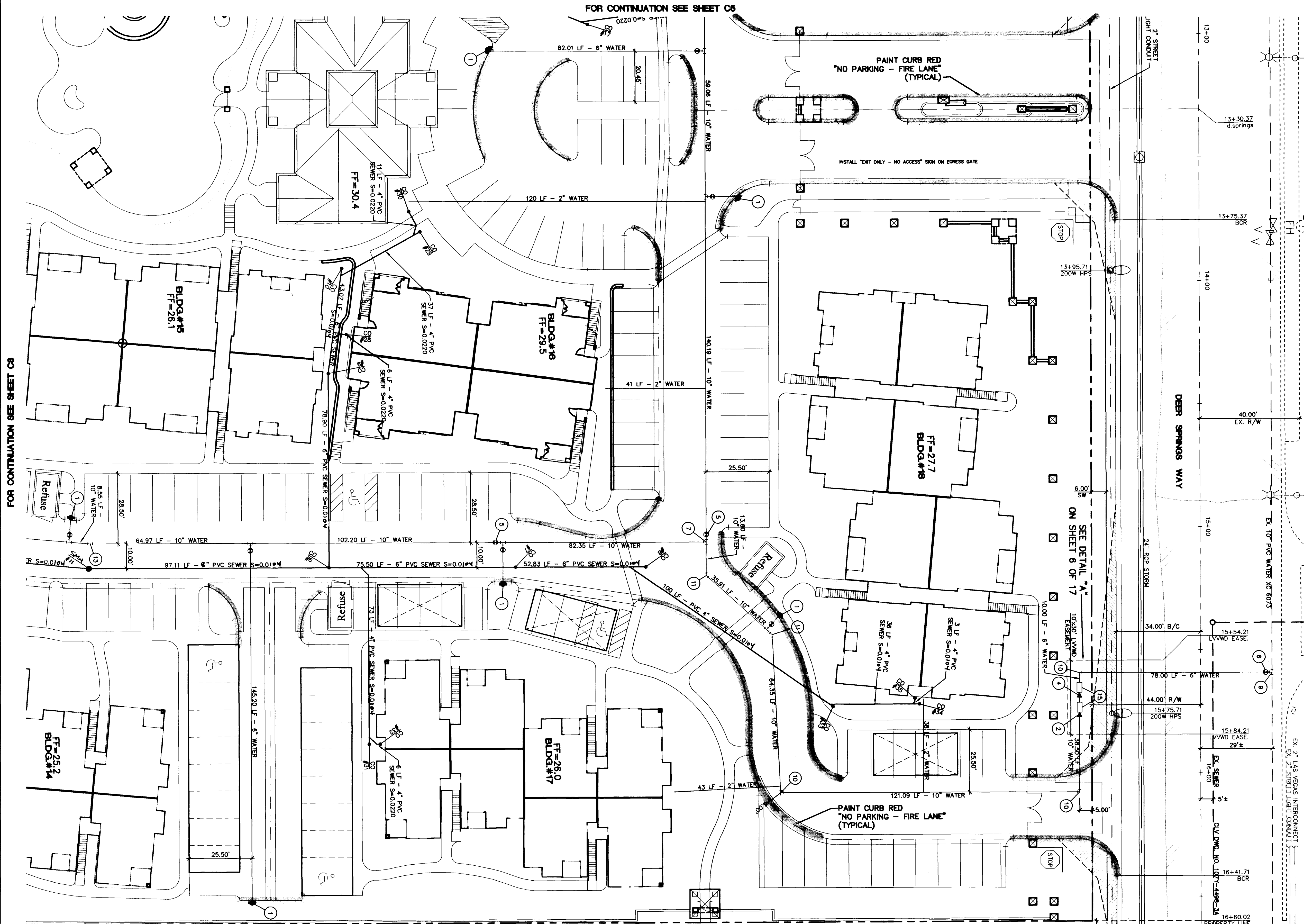


FOR CONTINUATION SEE SHEET C5



PROJECT BENCHMARK
TBM, T189 3" BRASS CAP USC & GS 50' EAST OF US 95 & 200' ± SOUTH OF CENTENNIAL ON 88 DATUM METER 734.5745-2410.02 FEET
TBM # 1LV9028NNE6

BASIS OF BEARINGS
THE BASIS OF BEARINGS FOR THIS PROJECT IS GRID NORTH, AS DEFINED BY THE NEVADA COORDINATE SYSTEM OF 1983 (NCS83), EAST ZONE, (2701), AS DETERMINED BY NORTH LAS VEGAS HARN CONTROL POINTS 700, 704, 714, AS SHOWN ON A RECORD OF SURVEY ON FILE IN THE CLARK COUNTY, NEVADA, RECORDER'S OFFICE IN FILE 82 OF SURVEYS, AT PAGE 52.

Call before you Dig
1-800-227-2600

Call before you Overhead
1-702-593-6111

NOTE: CONTRACTOR SHALL VERIFY HORIZONTAL AND VERTICAL LOCATION OF EXISTING UTILITIES AND NOTIFY THE DESIGN ENGINEER IMMEDIATELY OF ANY DISCREPANCIES PRIOR TO CONSTRUCTION.

STREET LIGHT NOTE
ALL STREET LIGHTING INSTALLATION EXCEPT AS NOTED ON THE STREET LIGHTING PLANS SHALL CONFORM TO THE IMPROVEMENT STANDARDS, DEPARTMENT OF PUBLIC WORKS, CLARK COUNTY, NEVADA, AND THE UNIFORM STANDARD SPECIFICATIONS FOR PUBLIC WORKS CONSTRUCTION, OFF-SITE IMPROVEMENTS, CLARK COUNTY AREA, NEVADA.

ALL POLES TO BE GALVANIZED. ALL HAND HOLE COVERS MUST BE INSTALLED. POLE CAPS POURED AND ALL PULL BOX LIDS BOLTED DOWN PRIOR TO ENERGIZING CIRCUIT. ALL WIRE MUST HAVE THIS INSULATION.

LAS VEGAS VALLEY WATER DISTRICT DATE

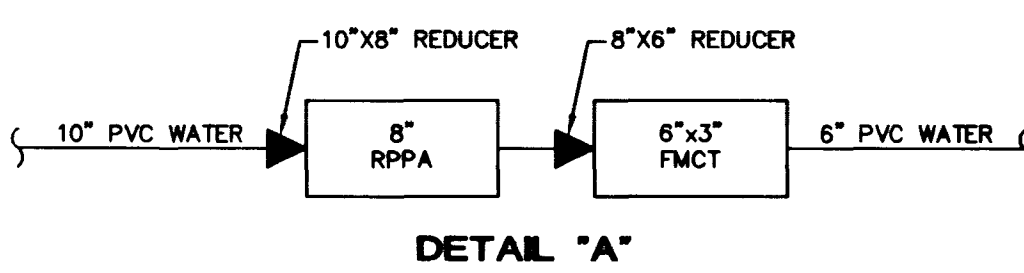
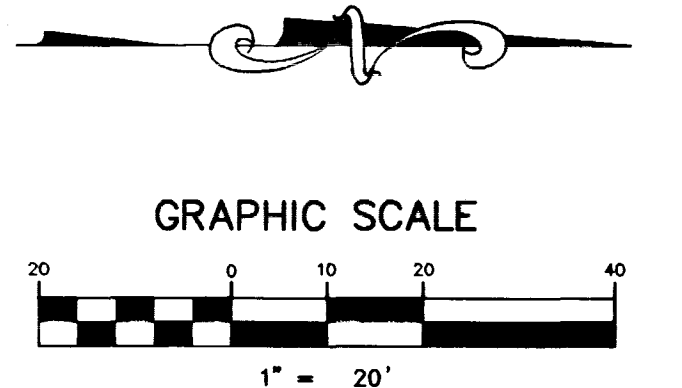
CITY OF LAS VEGAS FIRE DEPT. DATE

ALL SEWER LOCATED OUTSIDE OF ANY PUBLIC RIGHT-OF-WAY AND ANY PUBLIC SEWER EASEMENT IS PRIVATE SEWER PER UPC.

CURB TO BE PAINTED RED "NO PARKING - FIRE LANE" (TYPICAL)

SEWER CONNECTION NOTE
A SEGMENT OF THE DOWNSTREAM SEWER SYSTEM THAT WILL SERVE THIS PROJECT HAS NOT BEEN COMPLETED AND/OR ACCEPTED FOR MAINTENANCE BY THE CITY OF LAS VEGAS. ANY WORK DONE ON THIS PROJECT PRIOR TO THE COMPLETION AND/OR ACCEPTANCE OF THE DOWNSTREAM SEWER SYSTEM(S) SHALL BE DONE AT THE DEVELOPER'S OWN RISK. THE CITY OF LAS VEGAS RESERVES THE RIGHT TO PREVENT THE PHYSICAL CONNECTION OF THIS PROJECT INTO THE DOWNSTREAM SEWER SYSTEM UNTIL ALL SEGMENTS HAVE BEEN ACCEPTED FOR MAINTENANCE, OR UNTIL SUCH TIME AS THEY HAVE BEEN DEEMED AVAILABLE FOR SERVICE.

- NOTES:
1. ALL CLEANOUTS LOCATED IN PAVED AREAS WILL BE PROVIDED WITH VALVE BOXES, TRAFFIC BEARING LIDS AND CONCRETE COLLARS.
2. FOR SEWER CONTRIBUTIONS SEE SHEET C5



METERS MUST BE SET IN A HORIZONTAL POSITION. AT LEAST EIGHT (8) DIAMETERS OF STRAIGHT PIPE ARE REQUIRED AT THE INLET END.

BIG SKY DEVELOPMENT
3320 N. BUFFALO DRIVE
LAS VEGAS, NEVADA 89129
(702) 392-2050

novads
2727 SOUTH RAINBOW BOULEVARD LAS VEGAS, NEVADA 89102-5148
PH. (702) 873-7550 FAX (702) 362-2597
CONSULTING ENGINEERS • PLANNERS • LAND SURVEYORS

MASTER UTILITY PLAN

DEER SPRINGS APARTMENTS

DRAWN BY:	MARCH 1999	SHEET	
DESIGNED BY:	MARCH 1999	TITLE	
CHECKED BY:	MARCH 1999	SCALE:	1"=20' HORZ. 1/4"=1' VERT.
PROJECT NO.:	5522		

SHEET **C6** OF 17 SHEETS
DRAWING NO. 107-V3108

16903 16975 17314

