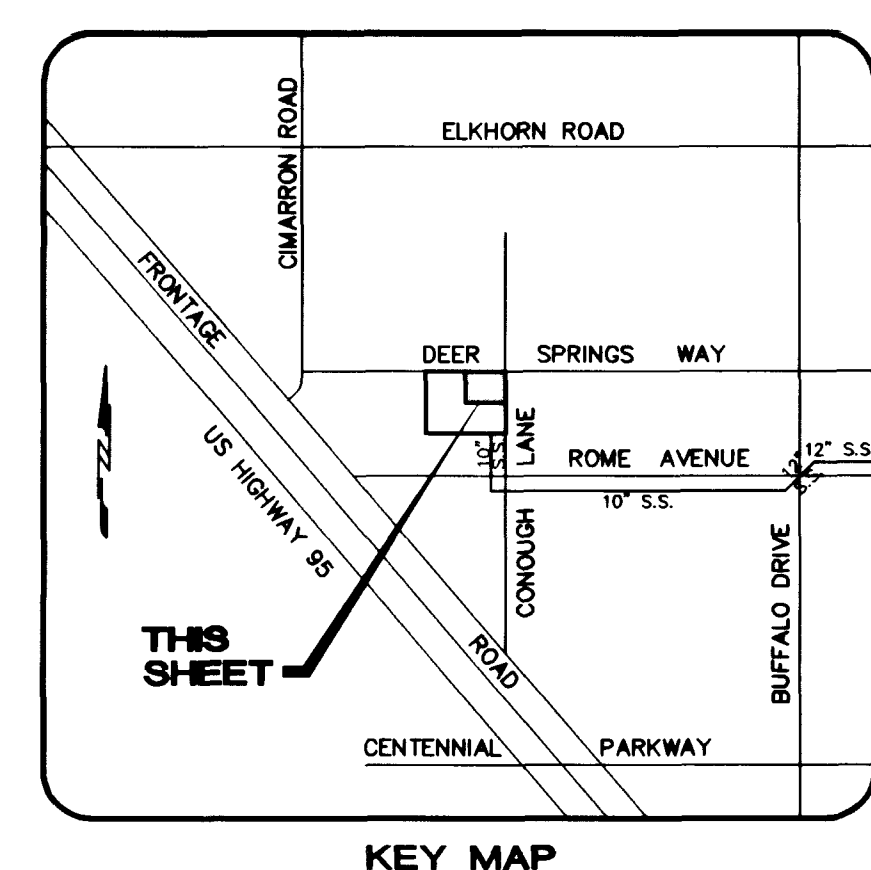
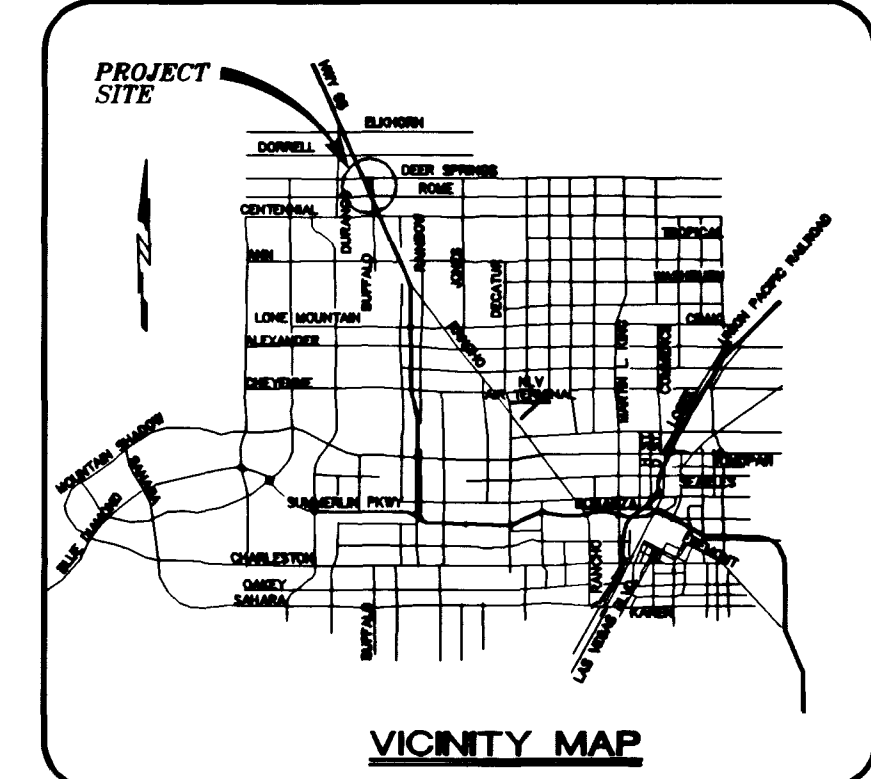
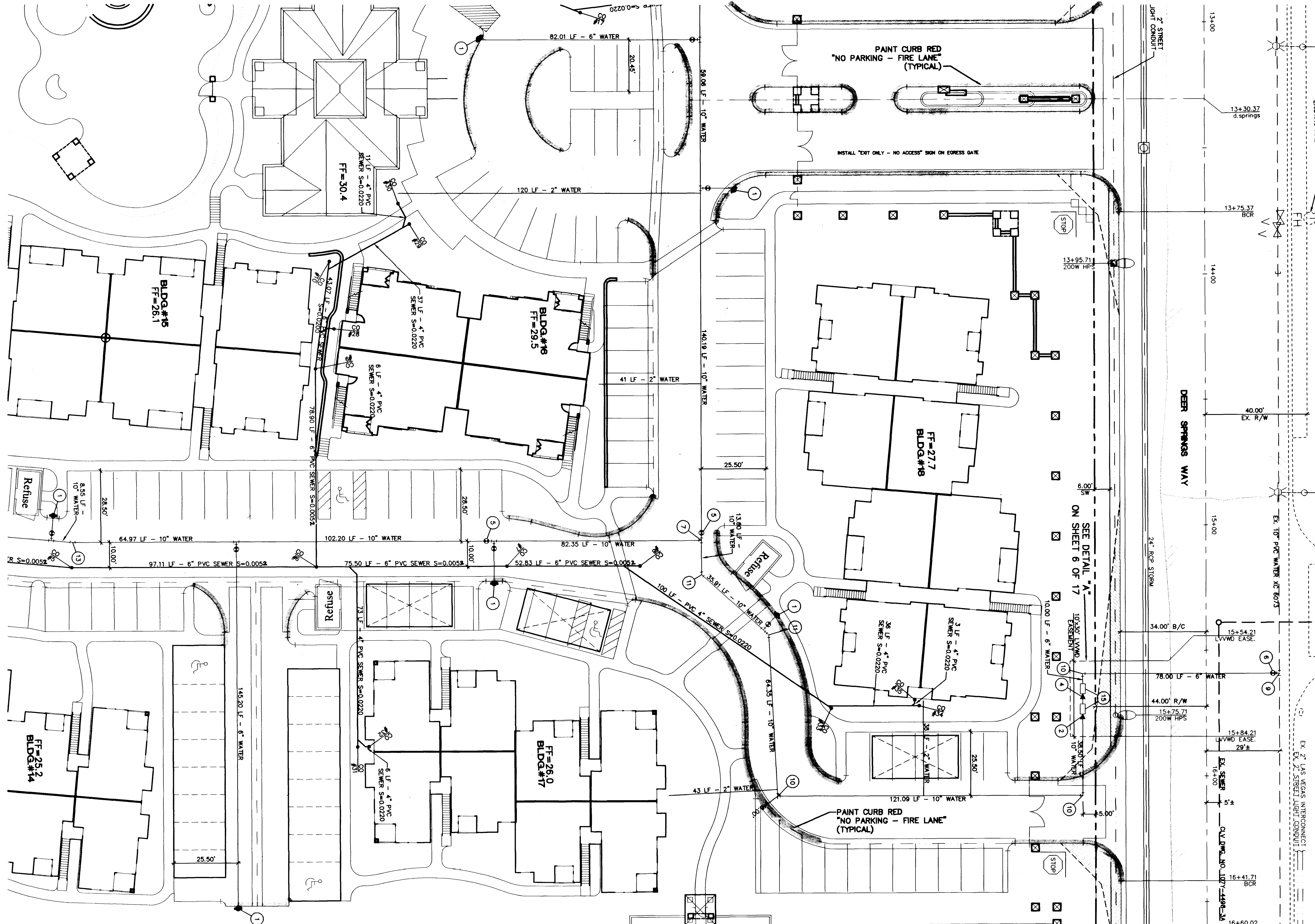


FOR CONTINUATION SEE SHEET C5

FOR CONTINUATION SEE SHEET C5



PROJECT BENCHMARK
 TBM, 1169 3" BRASS CAP USC & CS 50' EAST OF
 US 95 & 200' ± SOUTH OF CENTENNIAL ON
 88 DATUM METER 734.5745=2410.02 FEET
 TBM # 1LV9028NNE6

BASIS OF BEARINGS
 THE BASIS OF BEARINGS FOR THIS PROJECT IS GRID
 NORTH, AS DEFINED BY THE NEVADA COORDINATE SYSTEM
 OF 1983 (NCS83), EAST ZONE, (2701), AS DETERMINED
 BY NORTH LAS VEGAS HARN CONTROL POINTS
 700, 704, 714, AS SHOWN ON A RECORD OF SURVEY
 ON FILE IN THE CLARK COUNTY, NEVADA, RECORDER'S
 OFFICE IN FILE 82 OF SURVEYS, AT PAGE 52.

Avoid cutting underground
 utility lines. It's costly.
Call before you Dig
 1-800-227-2600

Avoid overhead power
 line contact.
Call before you OVERHEAD
 1-702-593-6111

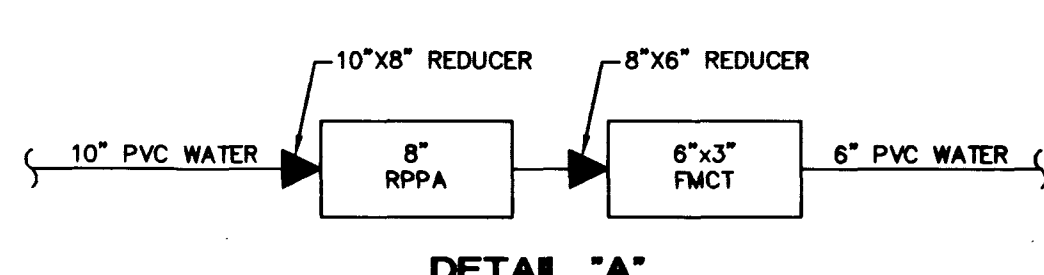
NOTE: CONTRACTOR SHALL VERIFY HORIZONTAL AND
 VERTICAL LOCATION OF EXISTING UTILITIES AND
 NOTIFY THE DESIGN ENGINEER IMMEDIATELY OF
 ANY DISCREPANCIES PRIOR TO CONSTRUCTION.

STREET LIGHT NOTE
 ALL STREET LIGHTING INSTALLATION EXCEPT AS NOTED ON THE STREET
 LIGHTING PLANS SHALL CONFORM TO THE IMPROVEMENT STANDARDS,
 DEPARTMENT OF PUBLIC WORKS, CLARK COUNTY, NEVADA, AND THE
 UNIFORM STANDARD SPECIFICATIONS FOR PUBLIC WORKS CONSTRUCTION,
 OFF-SITE IMPROVEMENTS, CLARK COUNTY AREA, NEVADA.

ALL POLES TO BE GALVANIZED. ALL HAND HOLE COVERS MUST BE
 INSTALLED. POLE CAPS POURED AND ALL PULL BOX LIDS BOLTED
 DOWN PRIOR TO ENERGIZING CIRCUIT. ALL Wires MUST HAVE THE INSULATION.

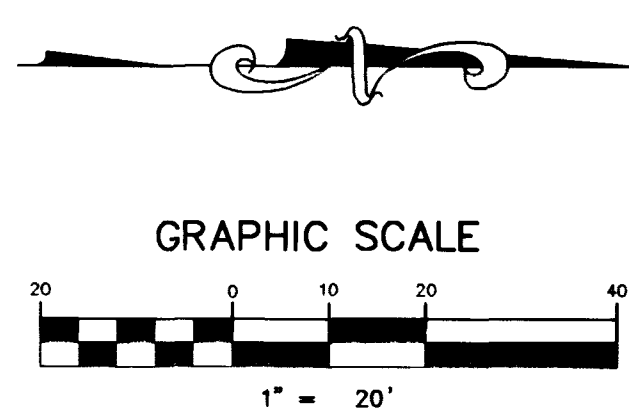
CURB TO BE PAINTED RED
 "NO PARKING - FIRE LANE"
 (TYPICAL)

SEWER CONNECTION NOTE
 A SEGMENT OF THE DOWNSTREAM SEWER SYSTEM
 THAT WILL SERVE THIS PROJECT HAS NOT BEEN
 COMPLETED AND/OR ACCEPTED FOR MAINTENANCE
 BY THE CITY OF LAS VEGAS. ANY WORK DONE
 ON THIS PROJECT PRIOR TO THE COMPLETION
 AND/OR ACCEPTANCE OF THE DOWNSTREAM SEWER
 SYSTEM(S) SHALL BE DONE AT THE DEVELOPER'S
 OWN RISK. THE CITY OF LAS VEGAS RESERVES
 THE RIGHT TO PREVENT THE PHYSICAL CONNECTION
 OF THIS PROJECT INTO THE DOWNSTREAM SEWER
 SYSTEM UNTIL ALL SEGMENTS HAVE BEEN ACCEPTED
 FOR MAINTENANCE, OR UNTIL SUCH TIME AS THEY
 HAVE BEEN DEEMED AVAILABLE FOR SERVICE.



- NOTES:**
- ALL CLEANOUTS LOCATED IN PAVED AREAS WILL BE PROVIDED WITH VALVE BOXES, TRAFFIC BEARING LIDS AND CONCRETE COLLARS.
 - FOR SEWER CONTRIBUTIONS SEE SHEET C5

METERS MUST BE SET IN A HORIZONTAL POSITION. AT LEAST EIGHT (8) DIAMETERS OF STRAIGHT PIPE ARE REQUIRED AT THE INLET END.



BIG SKY DEVELOPMENT
 3320 N. BUFFALO DRIVE
 LAS VEGAS, NV 89129
 (702) 395-2050

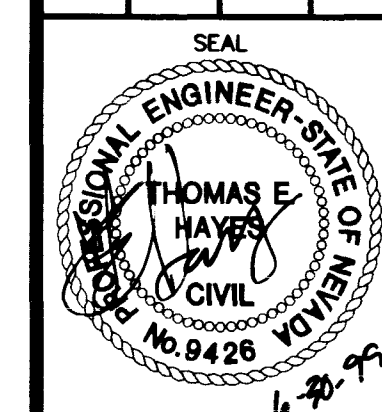
MTM nevada
 CONSULTING ENGINEERS & PLANNERS • LAND SURVEYORS
 2727 SOUTH RAINBOW BOULEVARD LAS VEGAS, NEVADA 89102-5148
 PH. (702) 873-7550 FAX (702) 382-2597

MASTER UTILITY PLAN

DEER SPRINGS APARTMENTS

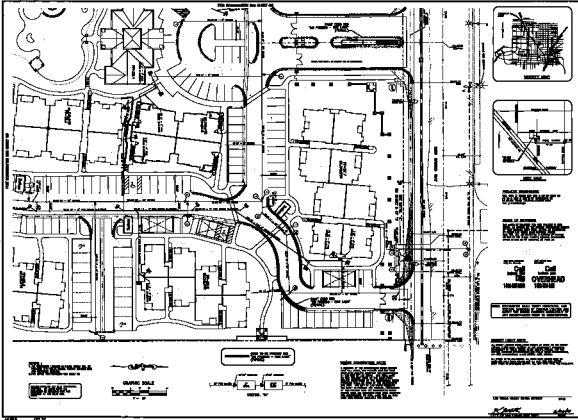
DESIGNED BY: MARCH 1999
DESIGNED BY: MARCH 1999
CHECKED BY: MARCH 1999
PROJECT NO.: 5522

SCALE: 1"=20' HORIZ. VERT. N/A



LAS VEGAS VALLEY WATER DISTRICT DATE
 CITY OF LAS VEGAS FILE DEPT. DATE

SHEET
C6
 6 OF 17 SHEETS
 DRAWING NO.
 107-V3108



EXISTING DRIVEWAY

NEW DRIVEWAY

NEW DRIVEWAY

NEW DRIVEWAY

NEW DRIVEWAY

NEW DRIVEWAY

THE BERRY DEVELOPMENT LANSING, MICHIGAN	THE BERRY DEVELOPMENT LANSING, MICHIGAN
SHEET NO. 1 OF 1	DATE: 12/15/1964
DRAWN BY: J. W. BERRY	CHECKED BY: J. W. BERRY
PROJECT NO. 100-100	CLIENT: THE BERRY DEVELOPMENT
SCALE: AS SHOWN	PROJECT LOCATION: 100-100