

SEWER MANHOLE DATA TABLE

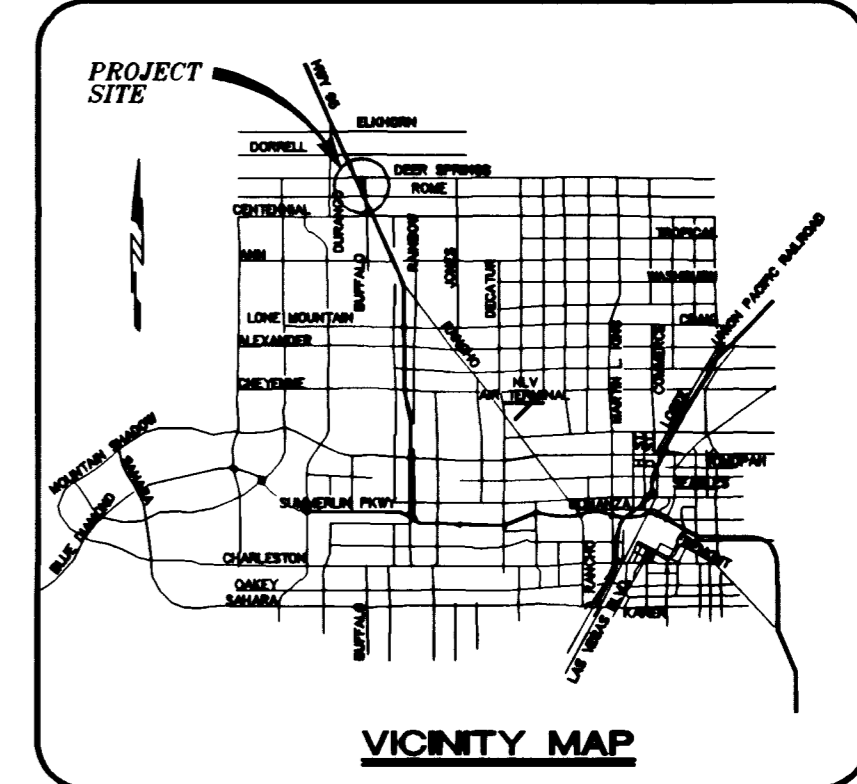
SMH #	TMH	INV. IN	INV. OUT	NORTHING	EASTING
EX	17.72	09.93	09.73	809555.42	750085.34
1	20.12	15.01	14.81	809881.55	750092.73
2	21.32	15.70	15.50	809882.39	749976.21
3	21.92	16.45	16.25	809993.30	749978.72
4	22.82	16.80	16.60	810021.82	749971.07
5	23.52	17.44	17.24	810003.73	749901.53
6	28.32	22.58	22.38	810005.50	749854.33
7	29.52	24.40	24.20	810020.82	749492.64
8	30.42	24.82	24.62	810029.67	749472.03

SEWER CLEANOUT DATA TABLE

CO #	TCO	INV. IN	INV. OUT	NORTHING	EASTING
1	22.22	17.12	16.92	810050.65	749983.48
2	22.62	17.62	17.42	810129.22	749968.93
3	23.02	18.22	18.02	810207.79	749954.37
4	23.32	18.52	18.32	810270.62	749961.31
5	24.02	19.22	19.02	810333.46	749968.25
6	24.32	19.52	19.32	810430.55	749970.45
7	24.52	19.72	19.52	810506.03	749972.16
8	25.32	20.52	20.32	810558.85	749973.36
9	25.72	20.92	20.72	810432.34	749891.57
10	26.32	21.52	21.32	810439.05	749848.93
11	28.42	21.43	21.43	810084.49	749753.17
12	27.02	22.38	22.18	810156.24	749753.69
13	28.52	23.42	23.22	810181.66	749720.40
14	31.02	24.62	24.42	810281.63	749722.66
15	32.02	25.32	25.12	810381.58	749719.57
16	32.52	25.82	25.62	810449.26	749713.55
17	30.42	26.72	26.52	810541.24	749752.78
18	22.62	27.82	27.62	809898.74	750052.99
19	26.12	27.21	27.01	809927.55	749934.50
20	23.42	19.37	19.17	810078.98	750057.25
21	23.42	19.37	19.17	810080.93	750054.27
22	27.02	20.77	20.57	810240.33	749862.93
23	26.12	21.44	21.24	810267.83	749865.96
24	27.02	20.85	20.65	810222.38	749872.52
25	27.12	21.00	20.80	810223.98	749862.95
26	24.42	20.37	20.17	810234.21	750030.65

SEWER CLEANOUT DATA TABLE

CO #	TCO	INV. IN	INV. OUT	NORTHING	EASTING
27	24.52	20.55	20.35	810244.15	750031.75
28	28.82	20.85	20.65	810440.12	749875.82
29	29.62	21.90	21.70	810471.10	749834.91
30	29.72	22.07	21.87	810466.79	749826.65
31	25.22	21.52	21.32	810444.88	750042.65
32	25.32	21.58	21.38	810449.38	750042.75
33	25.22	22.49	22.29	810633.08	750032.16
34	20.02	23.24	23.04	810668.05	750032.08
35	27.02	23.24	23.04	810666.36	750029.74
36	24.62	18.58	18.38	810054.94	749902.85
37	27.92	22.99	22.79	810051.30	749900.08
38	29.62	24.78	24.58	809932.88	749625.58
39	30.02	24.85	24.65	809932.90	749620.62
40	30.92	24.78	24.58	810061.87	749579.88
41	30.42	24.49	24.29	810183.43	749673.21
42	31.72	24.55	24.35	810187.95	749673.00
43	32.82	25.79	25.59	810409.06	749710.55
44	33.82	27.45	27.25	810452.94	749642.93
45	33.32	29.12	28.92	810480.00	749572.07
46	33.02	30.33	30.13	810499.50	749520.98
47	35.02	31.53	31.33	810557.09	749516.78
48	33.62	26.67	26.47	810503.98	749718.82
49	32.62	27.78	27.58	810603.15	749745.03
50	32.62	29.03	28.83	810658.11	749737.32
51	34.22	29.01	28.81	810659.32	749739.31



PROJECT BENCHMARK
 TBM, T169 3" BRASS CAP USC & GS 50' EAST OF US 95 & 200' SOUTH OF CENTENNIAL ON 88 DATUM METER 734.5745-2410.02 FEET TBM # 1LV9028NNE6

BASIS OF BEARINGS
 THE BASIS OF BEARINGS FOR THIS PROJECT IS GRID NORTH, AS DEFINED BY THE NEVADA COORDINATE SYSTEM OF 1983 (NCS83), EAST ZONE, (2701), AS DETERMINED BY NORTH LAS VEGAS HARN CONTROL POINTS 700, 704, 714, AS SHOWN ON A RECORD OF SURVEY ON FILE IN THE CLARK COUNTY, NEVADA, RECORDER'S OFFICE IN FILE 82 OF SURVEYS, AT PAGE 52.

Call before you Dig
 1-800-227-2600
Call before you OVERHEAD
 1-702-593-6111
ESTIMATE OF QUANTITIES/LEGEND

WATER	PRIVATE	PUBLIC
1" FIRE HYDRANT ASSEMBLY per (udacs plate 7) (INCLUDES 8" x 6" TEE & 6" GV)	15 EA.	
10" x 8" REDUCER	2 EA.	
10" x 6" REDUCER	1 EA.	
8" x 6" REDUCER	2 EA.	
10" GATE VALVE	9 EA.	
6" GATE VALVE		2 EA.
10" x 10" x 10" TEE	2 EA.	
10" x 10" x 6" TEE	1 EA.	
10" x 6" WET TAP		2 EA.
90° BEND	7 EA.	
45° BEND	5 EA.	
22.5° BEND	4 EA.	
11.25° BEND	3 EA.	
6" x 3" FMCY WITH 8" RPPA PER PLATE 11B		2 EA.
10" WATER LINE	2614 LF.	
8" WATER LINE	307 LF.	
6" WATER LINE	329 LF.	176 LF.
2" WATER LINE		1161 LF.

SEWER

STANDARD MANHOLE	8 EA.
CLEANOUT	51 EA.
8" SEWER MAIN	1108 LF.
6" SEWER MAIN	1230 LF.
4" SEWER MAIN	1352 LF.

SEWER CONTRIBUTION

AVERAGE FLOW =	0.0510 MGD
PEAK FLOW =	0.1795 MGD

STREET LIGHTS & SIGNAGE

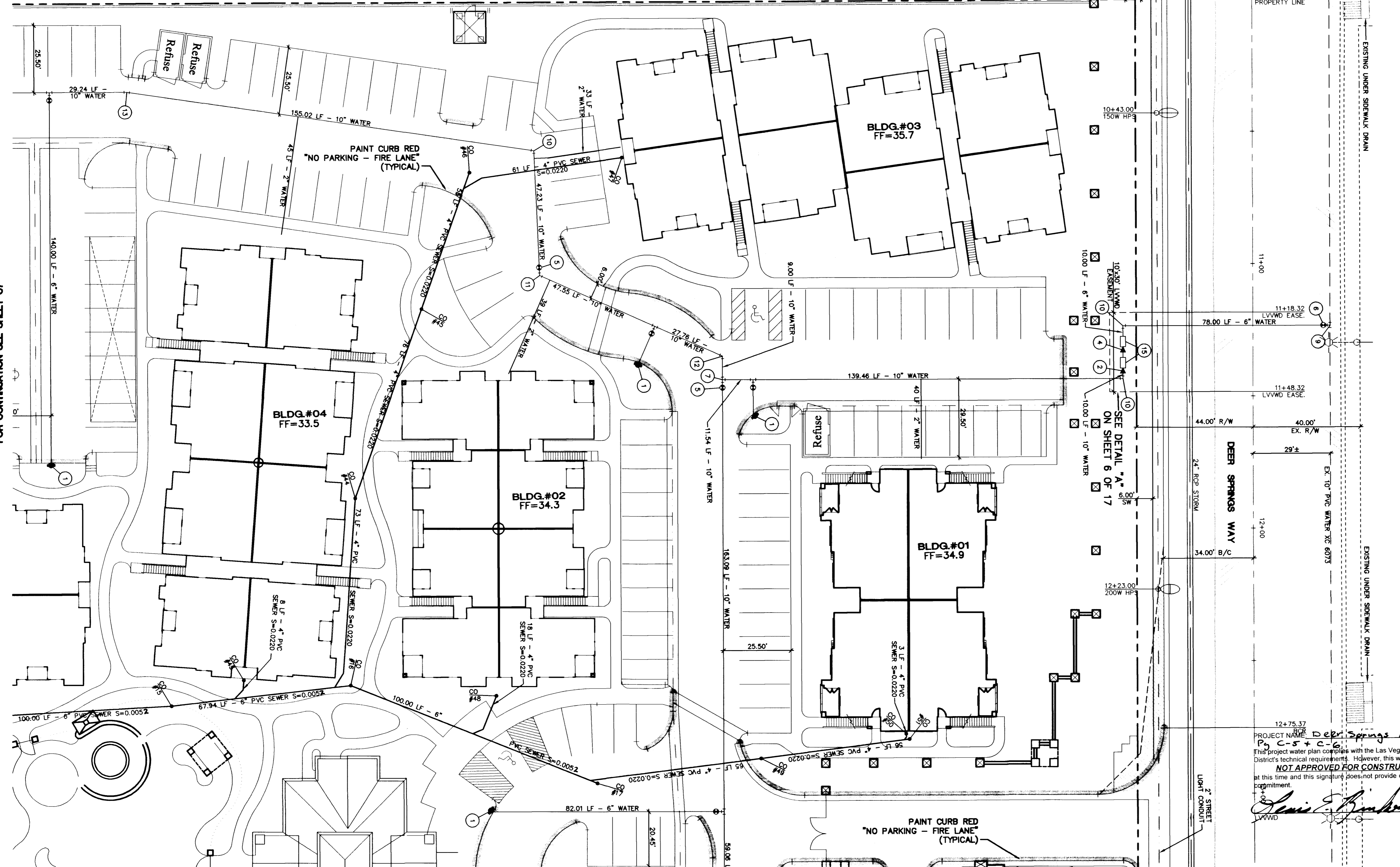
200W HPS LUMINAIRE	4 EA.
STOP SIGN	2 EA.
SERVICE POINT & RECC.	1 EA.

SEWER CONNECTION NOTE
 A SEGMENT OF THE DOWNSTREAM SEWER SYSTEM THAT WILL SERVE THIS PROJECT HAS NOT BEEN COMPLETED AND/OR ACCEPTED FOR MAINTENANCE BY THE CITY OF LAS VEGAS. ANY WORK DONE ON THIS PROJECT PRIOR TO THE COMPLETION AND/OR ACCEPTANCE OF THE DOWNSTREAM SEWER SYSTEM(S) SHALL BE DONE AT THE DEVELOPER'S OWN RISK. THE CITY OF LAS VEGAS RESERVES THE RIGHT TO PREVENT THE PHYSICAL CONNECTION OF THIS PROJECT INTO THE DOWNSTREAM SEWER SYSTEM UNTIL ALL SEGMENTS HAVE BEEN ACCEPTED FOR MAINTENANCE, OR UNTIL SUCH TIME AS THEY HAVE BEEN DEEMED AVAILABLE FOR SERVICE.

FIRE FLOW DATA
 THE FIRE FLOW REQUIREMENTS IS 2500 GPM AT 20 PSI RESIDUAL PRESSURE.
 BASED ON: PERLMAN ARCHITECTS BUILDING PLANS
 SQUARE FOOTAGE: 18876 SF
 LARGEST AREA BETWEEN 4-HOUR AREA SEPARATION WALLS: N/A
 BUILDING HEIGHT: 34'-5 1/2" FEET
 NUMBER OF STORIES: 2 FLOORS
 TYPE OF CONSTRUCTION: II-1 HOUR
 OCCUPANCY: R1
 FULL AUTOMATIC FIRE SPRINKLER SYSTEM: N/A
 REVIEWED BY: [Signature]
 DATE: 6/30/99

APPROVALS:
 [Signature] 6/30/99
 CITY OF LAS VEGAS FIRE MARSHAL
 DATE

LAS VEGAS VALLEY WATER DISTRICT
 [Signature] 6-30-99
 NEVADA POWER COMPANY
 DATE



NOTE: CONTRACTOR SHALL VERIFY HORIZONTAL AND VERTICAL LOCATION OF EXISTING UTILITIES AND NOTIFY THE DESIGN ENGINEER IMMEDIATELY OF ANY DISCREPANCIES PRIOR TO CONSTRUCTION.

THIS PROPERTY MAY HAVE STATIC WATER PRESSURE IN EXCESS OF 80 PSI. THE UNIFORM PLUMBING CODE REQUIRES THAT INDIVIDUAL ON-SITE (PRIVATE) PRESSURE REDUCING VALVES BE INSTALLED WHENEVER THE PRESSURE EXCEEDS 80 PSI. PRVS ARE THE DEVELOPER'S RESPONSIBILITY AND WILL NOT BE INSPECTED OR INCLUDED IN THE ACCEPTANCE OF LVWD FACILITIES.

NOTE: ALL CLEANOUTS LOCATED IN PAVED AREAS WILL BE PROVIDED WITH VALVE BODIES, TRAFFIC BEARING LIDS AND CONCRETE COLLARS.

INSTALLATION OF METER AND VAULT
 (2) 18" RPPA WATTS # 11-MCT II OR APPROVED EQUALS AND VAULTS WITH NON-TRAFFIC BEARING COVER(S) SHALL BE INSTALLED IN ACCORDANCE WITH THE UDACS PLATE NO. 21D AND WITH STANDARD VAULT DRAWING C-475, LATEST REVISION.

REDUCED PRESSURE PRINCIPLE ASSEMBLY
 (2) 18" RPPA WATTS # 11-MCT II OR APPROVED EQUALS SHALL BE INSTALLED PER THE UDACS PLATE NO. 11B. NO WATER SHALL BE TAKEN FROM A SERVICE REQUIREING BACKFLOW PREVENTION UNTIL THE REDUCED PRESSURE PRINCIPLE ASSEMBLY HAS BEEN SUCCESSFULLY TESTED BY THE LVWD.

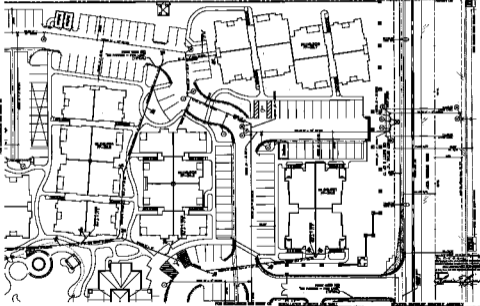


EXISTING OVERHEAD

LINE NO.	TYPE	SPAN	HEIGHT
1	12"	10'	12'
2	12"	10'	12'
3	12"	10'	12'
4	12"	10'	12'
5	12"	10'	12'
6	12"	10'	12'
7	12"	10'	12'
8	12"	10'	12'
9	12"	10'	12'
10	12"	10'	12'
11	12"	10'	12'
12	12"	10'	12'
13	12"	10'	12'
14	12"	10'	12'
15	12"	10'	12'
16	12"	10'	12'
17	12"	10'	12'
18	12"	10'	12'
19	12"	10'	12'
20	12"	10'	12'
21	12"	10'	12'
22	12"	10'	12'
23	12"	10'	12'
24	12"	10'	12'
25	12"	10'	12'
26	12"	10'	12'
27	12"	10'	12'
28	12"	10'	12'
29	12"	10'	12'
30	12"	10'	12'
31	12"	10'	12'
32	12"	10'	12'
33	12"	10'	12'
34	12"	10'	12'
35	12"	10'	12'
36	12"	10'	12'
37	12"	10'	12'
38	12"	10'	12'
39	12"	10'	12'
40	12"	10'	12'
41	12"	10'	12'
42	12"	10'	12'
43	12"	10'	12'
44	12"	10'	12'
45	12"	10'	12'
46	12"	10'	12'
47	12"	10'	12'
48	12"	10'	12'
49	12"	10'	12'
50	12"	10'	12'
51	12"	10'	12'
52	12"	10'	12'
53	12"	10'	12'
54	12"	10'	12'
55	12"	10'	12'
56	12"	10'	12'
57	12"	10'	12'
58	12"	10'	12'
59	12"	10'	12'
60	12"	10'	12'
61	12"	10'	12'
62	12"	10'	12'
63	12"	10'	12'
64	12"	10'	12'
65	12"	10'	12'
66	12"	10'	12'
67	12"	10'	12'
68	12"	10'	12'
69	12"	10'	12'
70	12"	10'	12'
71	12"	10'	12'
72	12"	10'	12'
73	12"	10'	12'
74	12"	10'	12'
75	12"	10'	12'
76	12"	10'	12'
77	12"	10'	12'
78	12"	10'	12'
79	12"	10'	12'
80	12"	10'	12'
81	12"	10'	12'
82	12"	10'	12'
83	12"	10'	12'
84	12"	10'	12'
85	12"	10'	12'
86	12"	10'	12'
87	12"	10'	12'
88	12"	10'	12'
89	12"	10'	12'
90	12"	10'	12'
91	12"	10'	12'
92	12"	10'	12'
93	12"	10'	12'
94	12"	10'	12'
95	12"	10'	12'
96	12"	10'	12'
97	12"	10'	12'
98	12"	10'	12'
99	12"	10'	12'
100	12"	10'	12'

EXISTING UNDERGROUND

LINE NO.	TYPE	DEPTH	DIAMETER
1	12"	4'	12"
2	12"	4'	12"
3	12"	4'	12"
4	12"	4'	12"
5	12"	4'	12"
6	12"	4'	12"
7	12"	4'	12"
8	12"	4'	12"
9	12"	4'	12"
10	12"	4'	12"
11	12"	4'	12"
12	12"	4'	12"
13	12"	4'	12"
14	12"	4'	12"
15	12"	4'	12"
16	12"	4'	12"
17	12"	4'	12"
18	12"	4'	12"
19	12"	4'	12"
20	12"	4'	12"
21	12"	4'	12"
22	12"	4'	12"
23	12"	4'	12"
24	12"	4'	12"
25	12"	4'	12"
26	12"	4'	12"
27	12"	4'	12"
28	12"	4'	12"
29	12"	4'	12"
30	12"	4'	12"
31	12"	4'	12"
32	12"	4'	12"
33	12"	4'	12"
34	12"	4'	12"
35	12"	4'	12"
36	12"	4'	12"
37	12"	4'	12"
38	12"	4'	12"
39	12"	4'	12"
40	12"	4'	12"
41	12"	4'	12"
42	12"	4'	12"
43	12"	4'	12"
44	12"	4'	12"
45	12"	4'	12"
46	12"	4'	12"
47	12"	4'	12"
48	12"	4'	12"
49	12"	4'	12"
50	12"	4'	12"
51	12"	4'	12"
52	12"	4'	12"
53	12"	4'	12"
54	12"	4'	12"
55	12"	4'	12"
56	12"	4'	12"
57	12"	4'	12"
58	12"	4'	12"
59	12"	4'	12"
60	12"	4'	12"
61	12"	4'	12"
62	12"	4'	12"
63	12"	4'	12"
64	12"	4'	12"
65	12"	4'	12"
66	12"	4'	12"
67	12"	4'	12"
68	12"	4'	12"
69	12"	4'	12"
70	12"	4'	12"
71	12"	4'	12"
72	12"	4'	12"
73	12"	4'	12"
74	12"	4'	12"
75	12"	4'	12"
76	12"	4'	12"
77	12"	4'	12"
78	12"	4'	12"
79	12"	4'	12"
80	12"	4'	12"
81	12"	4'	12"
82	12"	4'	12"
83	12"	4'	12"
84	12"	4'	12"
85	12"	4'	12"
86	12"	4'	12"
87	12"	4'	12"
88	12"	4'	12"
89	12"	4'	12"
90	12"	4'	12"
91	12"	4'	12"
92	12"	4'	12"
93	12"	4'	12"
94	12"	4'	12"
95	12"	4'	12"
96	12"	4'	12"
97	12"	4'	12"
98	12"	4'	12"
99	12"	4'	12"
100	12"	4'	12"



GENERAL NOTES

1. ALL UTILITIES TO BE LOCATED AND DEPTHS TO BE SHOWN ON THIS PLAN.
2. ALL UTILITIES TO BE DELETED OR RELOCATED AS SHOWN ON THIS PLAN.
3. ALL UTILITIES TO BE INSTALLED AS SHOWN ON THIS PLAN.
4. ALL UTILITIES TO BE INSTALLED AT THE DEPTHS SHOWN ON THIS PLAN.
5. ALL UTILITIES TO BE INSTALLED IN THE MANNER SHOWN ON THIS PLAN.
6. ALL UTILITIES TO BE INSTALLED IN ACCORDANCE WITH THE SPECIFICATIONS FOR UTILITIES.
7. ALL UTILITIES TO BE INSTALLED IN ACCORDANCE WITH THE SPECIFICATIONS FOR UTILITIES.
8. ALL UTILITIES TO BE INSTALLED IN ACCORDANCE WITH THE SPECIFICATIONS FOR UTILITIES.
9. ALL UTILITIES TO BE INSTALLED IN ACCORDANCE WITH THE SPECIFICATIONS FOR UTILITIES.
10. ALL UTILITIES TO BE INSTALLED IN ACCORDANCE WITH THE SPECIFICATIONS FOR UTILITIES.
11. ALL UTILITIES TO BE INSTALLED IN ACCORDANCE WITH THE SPECIFICATIONS FOR UTILITIES.
12. ALL UTILITIES TO BE INSTALLED IN ACCORDANCE WITH THE SPECIFICATIONS FOR UTILITIES.
13. ALL UTILITIES TO BE INSTALLED IN ACCORDANCE WITH THE SPECIFICATIONS FOR UTILITIES.
14. ALL UTILITIES TO BE INSTALLED IN ACCORDANCE WITH THE SPECIFICATIONS FOR UTILITIES.
15. ALL UTILITIES TO BE INSTALLED IN ACCORDANCE WITH THE SPECIFICATIONS FOR UTILITIES.
16. ALL UTILITIES TO BE INSTALLED IN ACCORDANCE WITH THE SPECIFICATIONS FOR UTILITIES.
17. ALL UTILITIES TO BE INSTALLED IN ACCORDANCE WITH THE SPECIFICATIONS FOR UTILITIES.
18. ALL UTILITIES TO BE INSTALLED IN ACCORDANCE WITH THE SPECIFICATIONS FOR UTILITIES.
19. ALL UTILITIES TO BE INSTALLED IN ACCORDANCE WITH THE SPECIFICATIONS FOR UTILITIES.
20. ALL UTILITIES TO BE INSTALLED IN ACCORDANCE WITH THE SPECIFICATIONS FOR UTILITIES.
21. ALL UTILITIES TO BE INSTALLED IN ACCORDANCE WITH THE SPECIFICATIONS FOR UTILITIES.
22. ALL UTILITIES TO BE INSTALLED IN ACCORDANCE WITH THE SPECIFICATIONS FOR UTILITIES.
23. ALL UTILITIES TO BE INSTALLED IN ACCORDANCE WITH THE SPECIFICATIONS FOR UTILITIES.
24. ALL UTILITIES TO BE INSTALLED IN ACCORDANCE WITH THE SPECIFICATIONS FOR UTILITIES.
25. ALL UTILITIES TO BE INSTALLED IN ACCORDANCE WITH THE SPECIFICATIONS FOR UTILITIES.
26. ALL UTILITIES TO BE INSTALLED IN ACCORDANCE WITH THE SPECIFICATIONS FOR UTILITIES.
27. ALL UTILITIES TO BE INSTALLED IN ACCORDANCE WITH THE SPECIFICATIONS FOR UTILITIES.
28. ALL UTILITIES TO BE INSTALLED IN ACCORDANCE WITH THE SPECIFICATIONS FOR UTILITIES.
29. ALL UTILITIES TO BE INSTALLED IN ACCORDANCE WITH THE SPECIFICATIONS FOR UTILITIES.
30. ALL UTILITIES TO BE INSTALLED IN ACCORDANCE WITH THE SPECIFICATIONS FOR UTILITIES.
31. ALL UTILITIES TO BE INSTALLED IN ACCORDANCE WITH THE SPECIFICATIONS FOR UTILITIES.
32. ALL UTILITIES TO BE INSTALLED IN ACCORDANCE WITH THE SPECIFICATIONS FOR UTILITIES.
33. ALL UTILITIES TO BE INSTALLED IN ACCORDANCE WITH THE SPECIFICATIONS FOR UTILITIES.
34. ALL UTILITIES TO BE INSTALLED IN ACCORDANCE WITH THE SPECIFICATIONS FOR UTILITIES.
35. ALL UTILITIES TO BE INSTALLED IN ACCORDANCE WITH THE SPECIFICATIONS FOR UTILITIES.
36. ALL UTILITIES TO BE INSTALLED IN ACCORDANCE WITH THE SPECIFICATIONS FOR UTILITIES.
37. ALL UTILITIES TO BE INSTALLED IN ACCORDANCE WITH THE SPECIFICATIONS FOR UTILITIES.
38. ALL UTILITIES TO BE INSTALLED IN ACCORDANCE WITH THE SPECIFICATIONS FOR UTILITIES.
39. ALL UTILITIES TO BE INSTALLED IN ACCORDANCE WITH THE SPECIFICATIONS FOR UTILITIES.
40. ALL UTILITIES TO BE INSTALLED IN ACCORDANCE WITH THE SPECIFICATIONS FOR UTILITIES.
41. ALL UTILITIES TO BE INSTALLED IN ACCORDANCE WITH THE SPECIFICATIONS FOR UTILITIES.
42. ALL UTILITIES TO BE INSTALLED IN ACCORDANCE WITH THE SPECIFICATIONS FOR UTILITIES.
43. ALL UTILITIES TO BE INSTALLED IN ACCORDANCE WITH THE SPECIFICATIONS FOR UTILITIES.
44. ALL UTILITIES TO BE INSTALLED IN ACCORDANCE WITH THE SPECIFICATIONS FOR UTILITIES.
45. ALL UTILITIES TO BE INSTALLED IN ACCORDANCE WITH THE SPECIFICATIONS FOR UTILITIES.
46. ALL UTILITIES TO BE INSTALLED IN ACCORDANCE WITH THE SPECIFICATIONS FOR UTILITIES.
47. ALL UTILITIES TO BE INSTALLED IN ACCORDANCE WITH THE SPECIFICATIONS FOR UTILITIES.
48. ALL UTILITIES TO BE INSTALLED IN ACCORDANCE WITH THE SPECIFICATIONS FOR UTILITIES.
49. ALL UTILITIES TO BE INSTALLED IN ACCORDANCE WITH THE SPECIFICATIONS FOR UTILITIES.
50. ALL UTILITIES TO BE INSTALLED IN ACCORDANCE WITH THE SPECIFICATIONS FOR UTILITIES.
51. ALL UTILITIES TO BE INSTALLED IN ACCORDANCE WITH THE SPECIFICATIONS FOR UTILITIES.
52. ALL UTILITIES TO BE INSTALLED IN ACCORDANCE WITH THE SPECIFICATIONS FOR UTILITIES.
53. ALL UTILITIES TO BE INSTALLED IN ACCORDANCE WITH THE SPECIFICATIONS FOR UTILITIES.
54. ALL UTILITIES TO BE INSTALLED IN ACCORDANCE WITH THE SPECIFICATIONS FOR UTILITIES.
55. ALL UTILITIES TO BE INSTALLED IN ACCORDANCE WITH THE SPECIFICATIONS FOR UTILITIES.
56. ALL UTILITIES TO BE INSTALLED IN ACCORDANCE WITH THE SPECIFICATIONS FOR UTILITIES.
57. ALL UTILITIES TO BE INSTALLED IN ACCORDANCE WITH THE SPECIFICATIONS FOR UTILITIES.
58. ALL UTILITIES TO BE INSTALLED IN ACCORDANCE WITH THE SPECIFICATIONS FOR UTILITIES.
59. ALL UTILITIES TO BE INSTALLED IN ACCORDANCE WITH THE SPECIFICATIONS FOR UTILITIES.
60. ALL UTILITIES TO BE INSTALLED IN ACCORDANCE WITH THE SPECIFICATIONS FOR UTILITIES.
61. ALL UTILITIES TO BE INSTALLED IN ACCORDANCE WITH THE SPECIFICATIONS FOR UTILITIES.
62. ALL UTILITIES TO BE INSTALLED IN ACCORDANCE WITH THE SPECIFICATIONS FOR UTILITIES.
63. ALL UTILITIES TO BE INSTALLED IN ACCORDANCE WITH THE SPECIFICATIONS FOR UTILITIES.
64. ALL UTILITIES TO BE INSTALLED IN ACCORDANCE WITH THE SPECIFICATIONS FOR UTILITIES.
65. ALL UTILITIES TO BE INSTALLED IN ACCORDANCE WITH THE SPECIFICATIONS FOR UTILITIES.
66. ALL UTILITIES TO BE INSTALLED IN ACCORDANCE WITH THE SPECIFICATIONS FOR UTILITIES.
67. ALL UTILITIES TO BE INSTALLED IN ACCORDANCE WITH THE SPECIFICATIONS FOR UTILITIES.
68. ALL UTILITIES TO BE INSTALLED IN ACCORDANCE WITH THE SPECIFICATIONS FOR UTILITIES.
69. ALL UTILITIES TO BE INSTALLED IN ACCORDANCE WITH THE SPECIFICATIONS FOR UTILITIES.
70. ALL UTILITIES TO BE INSTALLED IN ACCORDANCE WITH THE SPECIFICATIONS FOR UTILITIES.
71. ALL UTILITIES TO BE INSTALLED IN ACCORDANCE WITH THE SPECIFICATIONS FOR UTILITIES.
72. ALL UTILITIES TO BE INSTALLED IN ACCORDANCE WITH THE SPECIFICATIONS FOR UTILITIES.
73. ALL UTILITIES TO BE INSTALLED IN ACCORDANCE WITH THE SPECIFICATIONS FOR UTILITIES.
74. ALL UTILITIES TO BE INSTALLED IN ACCORDANCE WITH THE SPECIFICATIONS FOR UTILITIES.
75. ALL UTILITIES TO BE INSTALLED IN ACCORDANCE WITH THE SPECIFICATIONS FOR UTILITIES.
76. ALL UTILITIES TO BE INSTALLED IN ACCORDANCE WITH THE SPECIFICATIONS FOR UTILITIES.
77. ALL UTILITIES TO BE INSTALLED IN ACCORDANCE WITH THE SPECIFICATIONS FOR UTILITIES.
78. ALL UTILITIES TO BE INSTALLED IN ACCORDANCE WITH THE SPECIFICATIONS FOR UTILITIES.
79. ALL UTILITIES TO BE INSTALLED IN ACCORDANCE WITH THE SPECIFICATIONS FOR UTILITIES.
80. ALL UTILITIES TO BE INSTALLED IN ACCORDANCE WITH THE SPECIFICATIONS FOR UTILITIES.
81. ALL UTILITIES TO BE INSTALLED IN ACCORDANCE WITH THE SPECIFICATIONS FOR UTILITIES.
82. ALL UTILITIES TO BE INSTALLED IN ACCORDANCE WITH THE SPECIFICATIONS FOR UTILITIES.
83. ALL UTILITIES TO BE INSTALLED IN ACCORDANCE WITH THE SPECIFICATIONS FOR UTILITIES.
84. ALL UTILITIES TO BE INSTALLED IN ACCORDANCE WITH THE SPECIFICATIONS FOR UTILITIES.
85. ALL UTILITIES TO BE INSTALLED IN ACCORDANCE WITH THE SPECIFICATIONS FOR UTILITIES.
86. ALL UTILITIES TO BE INSTALLED IN ACCORDANCE WITH THE SPECIFICATIONS FOR UTILITIES.
87. ALL UTILITIES TO BE INSTALLED IN ACCORDANCE WITH THE SPECIFICATIONS FOR UTILITIES.
88. ALL UTILITIES TO BE INSTALLED IN ACCORDANCE WITH THE SPECIFICATIONS FOR UTILITIES.
89. ALL UTILITIES TO BE INSTALLED IN ACCORDANCE WITH THE SPECIFICATIONS FOR UTILITIES.
90. ALL UTILITIES TO BE INSTALLED IN ACCORDANCE WITH THE SPECIFICATIONS FOR UTILITIES.
91. ALL UTILITIES TO BE INSTALLED IN ACCORDANCE WITH THE SPECIFICATIONS FOR UTILITIES.
92. ALL UTILITIES TO BE INSTALLED IN ACCORDANCE WITH THE SPECIFICATIONS FOR UTILITIES.
93. ALL UTILITIES TO BE INSTALLED IN ACCORDANCE WITH THE SPECIFICATIONS FOR UTILITIES.
94. ALL UTILITIES TO BE INSTALLED IN ACCORDANCE WITH THE SPECIFICATIONS FOR UTILITIES.
95. ALL UTILITIES TO BE INSTALLED IN ACCORDANCE WITH THE SPECIFICATIONS FOR UTILITIES.
96. ALL UTILITIES TO BE INSTALLED IN ACCORDANCE WITH THE SPECIFICATIONS FOR UTILITIES.
97. ALL UTILITIES TO BE INSTALLED IN ACCORDANCE WITH THE SPECIFICATIONS FOR UTILITIES.
98. ALL UTILITIES TO BE INSTALLED IN ACCORDANCE WITH THE SPECIFICATIONS FOR UTILITIES.
99. ALL UTILITIES TO BE INSTALLED IN ACCORDANCE WITH THE SPECIFICATIONS FOR UTILITIES.
100. ALL UTILITIES TO BE INSTALLED IN ACCORDANCE WITH THE SPECIFICATIONS FOR UTILITIES.

OVERHEAD

UNDERGROUND

CONCRETE

ASPHALT

PAVEMENT

LANDSCAPE

UTILITIES

STRUCTURES

ROADS

PARKING

PLANTING

IRRIGATION

WATER

SEWER

STORM

ELECTRIC

TELEPHONE

CABLE

TELEVISION

INTERNET

OTHER

PROJECT INFORMATION

CLIENT

DATE

SCALE

DESIGNER

CHECKER

APPROVER

PROJECT NO.

SHEET NO.

TOTAL SHEETS

PROJECT ADDRESS

CITY

STATE

ZIP

PHONE

FAX

EMAIL

WEBSITE

PROJECT DESCRIPTION

PROJECT LOCATION

PROJECT STATUS

PROJECT BUDGET

PROJECT SCHEDULE

PROJECT CONTACTS

PROJECT NOTES

PROJECT HISTORY

PROJECT REFERENCES

PROJECT LEGEND

PROJECT INDEX

PROJECT APPENDICES

PROJECT DRAWINGS

PROJECT SPECIFICATIONS

PROJECT CONTRACTS

PROJECT AGREEMENTS

PROJECT CONDITIONS

PROJECT WARRANTIES

PROJECT RELEASES

PROJECT ASSIGNMENTS

PROJECT DELEGATIONS

PROJECT AUTHORIZATIONS

PROJECT APPROVALS

PROJECT SIGNATURES

PROJECT STAMPS

PROJECT SEALS

PROJECT LICENSES

PROJECT CERTIFICATES

PROJECT DECISIONS

PROJECT ORDERS

PROJECT INSTRUCTIONS

PROJECT DIRECTIONS

PROJECT GUIDELINES

PROJECT STANDARDS

PROJECT CRITERIA

PROJECT REQUIREMENTS

PROJECT EXPECTATIONS

PROJECT GOALS

PROJECT OBJECTIVES

PROJECT PURPOSES

PROJECT REASONS

PROJECT BENEFITS

PROJECT RISKS

PROJECT CHALLENGES

PROJECT OPPORTUNITIES

PROJECT THREATS

PROJECT TRENDS

PROJECT PATTERNS

PROJECT TYPICALS

PROJECT DETAILS

PROJECT FINISHES

PROJECT MATERIALS

PROJECT METHODS

PROJECT TOOLS

PROJECT EQUIPMENT

PROJECT SUPPLIES

PROJECT SERVICES

PROJECT CONTRACTORS

PROJECT SUBCONTRACTORS

PROJECT VENDORS

PROJECT SUPPLIERS

PROJECT MANUFACTURERS

PROJECT DISTRIBUTORS

PROJECT RETAILERS

PROJECT WHOLESALE

PROJECT EXPORT

PROJECT IMPORT

PROJECT TRANSIT

PROJECT STORAGE

PROJECT HANDLING

PROJECT PROTECTION

PROJECT SECURITY

PROJECT SAFETY

PROJECT HEALTH

PROJECT ENVIRONMENT

PROJECT COMMUNITY

PROJECT CULTURE

PROJECT SOCIETY

PROJECT ECONOMY

PROJECT POLITICS

PROJECT LAW

PROJECT ETHICS

PROJECT MORALS

PROJECT VALUES

PROJECT BELIEFS

PROJECT OPINIONS

PROJECT ATTITUDES

PROJECT BEHAVIORS

PROJECT ACTIONS

PROJECT REACTIONS

PROJECT RESPONSES

PROJECT FEELINGS

PROJECT THOUGHTS

PROJECT KNOWLEDGE

PROJECT SKILLS

PROJECT ABILITIES

PROJECT CAPABILITIES

PROJECT POTENTIAL

PROJECT POSSIBILITIES

PROJECT PROBABILITIES

PROJECT LIKELIHOODS

PROJECT CHANCES

PROJECT ODDS

PROJECT RATES

PROJECT PERCENTAGES

PROJECT RATIOS

PROJECT FRACTIONS

PROJECT DECIMALS

PROJECT INTEGERS

PROJECT NUMBERS

PROJECT QUANTITIES

PROJECT MEASUREMENTS

PROJECT UNITS

PROJECT DIMENSIONS

PROJECT VOLUMES

PROJECT AREAS

PROJECT PERIMETERS

PROJECT LENGTHS

PROJECT WIDTHS

PROJECT HEIGHTS

PROJECT DEPTHS

PROJECT WEIGHTS

PROJECT MASSES

PROJECT DENSITIES

PROJECT PRESSURES

PROJECT TEMPERATURES

PROJECT SPEEDS

PROJECT ACCELERATIONS

PROJECT FORCES

PROJECT MOMENTS

PROJECT ENERGIES

PROJECT POWERS

PROJECT WORKS

PROJECT HEATS

PROJECT COOLINGS

PROJECT HEATINGS

PROJECT LIGHTINGS

PROJECT SOUNDS

PROJECT VIBRATIONS

PROJECT SHAKES

PROJECT TRENDS

PROJECT PATTERNS

PROJECT TYPICALS

PROJECT DETAILS

PROJECT FINISHES

PROJECT MATERIALS

PROJECT METHODS

PROJECT TOOLS

PROJECT EQUIPMENT

PROJECT SUPPLIES

PROJECT SERVICES

PROJECT CONTRACTORS

PROJECT SUBCONTRACTORS

PROJECT VENDORS

PROJECT SUPPLIERS

PROJECT MANUFACTURERS

PROJECT DISTRIBUTORS

PROJECT RETAILERS

PROJECT WHOLESALE

PROJECT EXPORT

PROJECT IMPORT

PROJECT TRANSIT

PROJECT STORAGE

PROJECT HANDLING

PROJECT PROTECTION

PROJECT SECURITY</