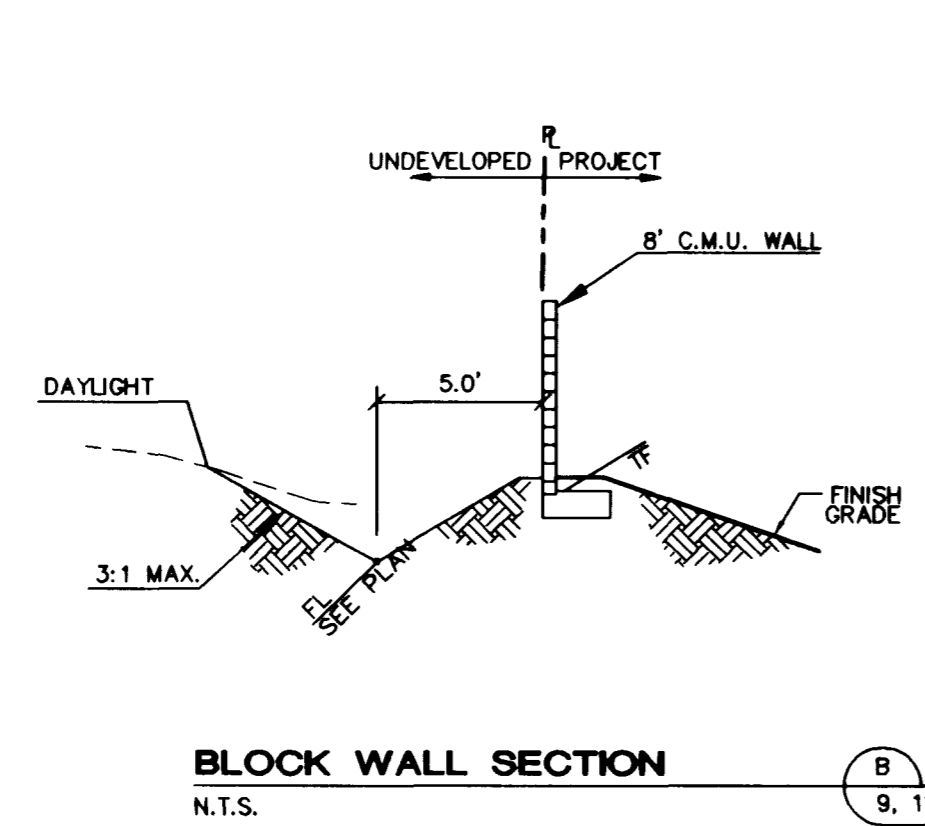
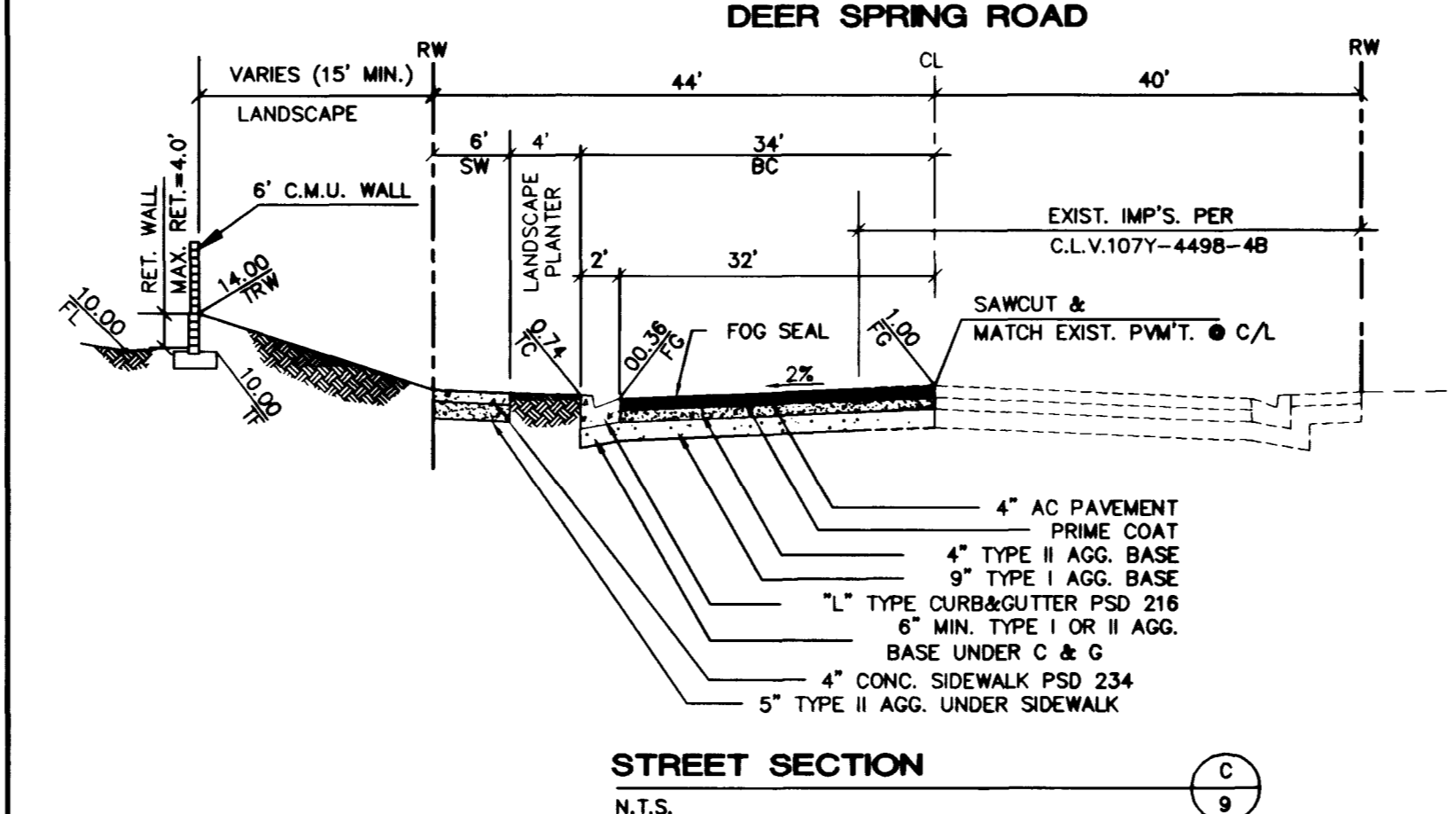


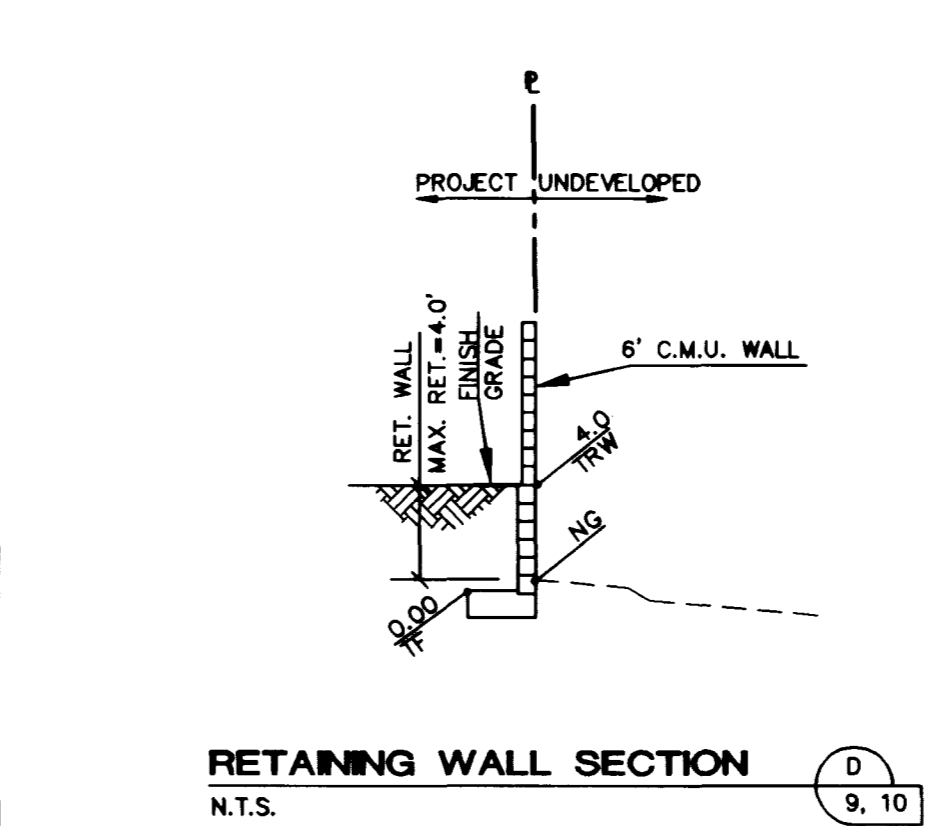
RETAINING WALL SECTION
N.T.S. (A) 9



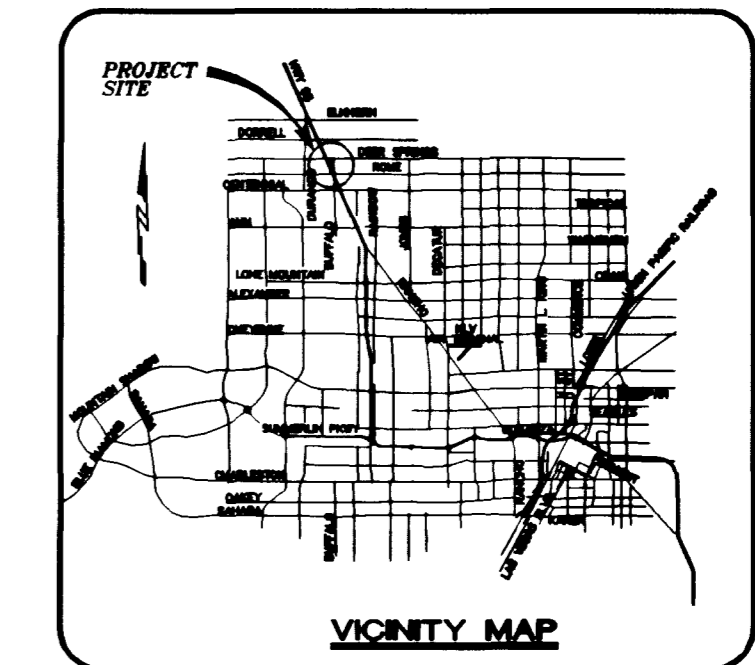
BLOCK WALL SECTION
N.T.S. (B) 9, 11



STREET SECTION
N.T.S. (C) 9

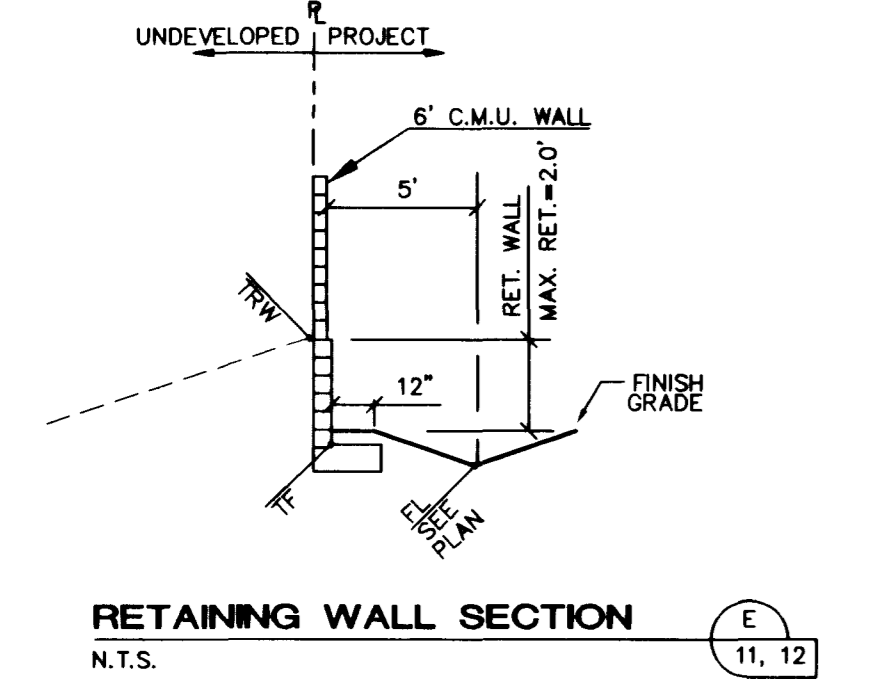


RETAINING WALL SECTION
N.T.S. (D) 9, 10

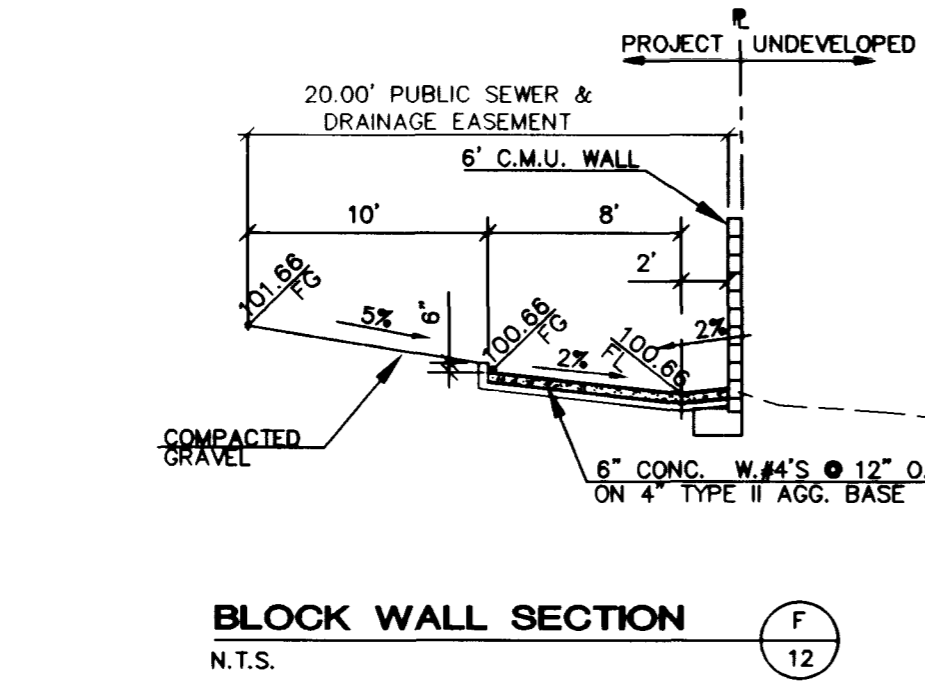


ABBREVIATIONS

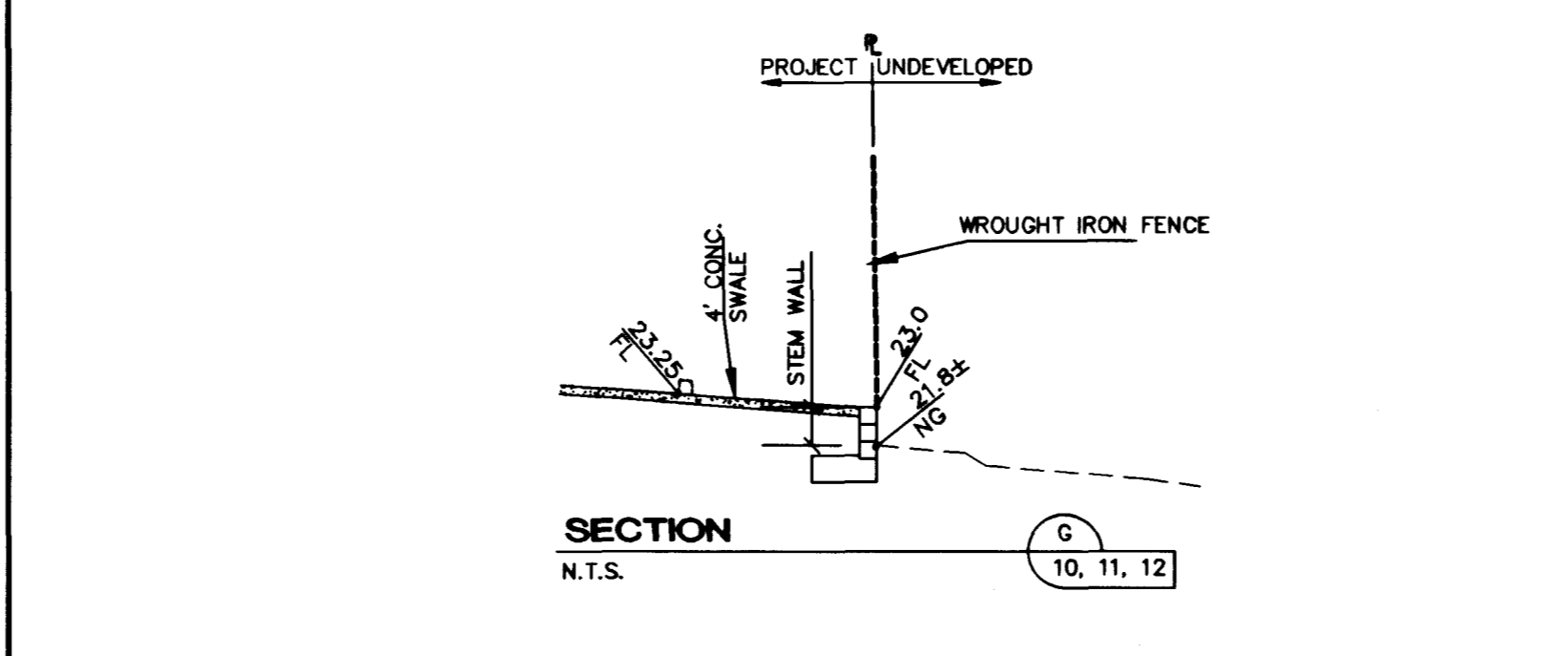
LS	LANDSCAPE	C & G	CURB & GUTTER
FF	FINISH FLOOR	SW	SIDEWALK
FG	FINISH GRADE	C/L	CENTER LINE
FL	FLOW LINE	O/C	OFFSET CROWN
TC/TOC	TOP OF CURB	BC	BACK OF CURB
TRC	TOP OF ROLL CURB	BCR	BEGIN CURB RETURN
EP	EDGE OF PAVEMENT	BCL	BACK OF CURB LENGTH
FUT.	FUTURE	TF	TOP OF FOOTING
EX.	EXISTING	GB	GRADE BREAK
VG	VALLEY GUTTER	PC	POINT OF CURVATURE
NG	NATURAL GROUND	PT	POINT OF TANGENCY
H.P.	HIGH POINT	PRC	POINT OF REVERSE CURVATURE
L.P.	LOW POINT	PCC	POINT OF COMPOUND CURVATURE
SSMH	SEWER MANHOLE	BVC	BEGIN VERTICAL CURVE
W	WATER LINE	MVC	MID-POINT OF VERTICAL CURVE
SD	STORM DRAIN	EVC	END VERTICAL CURVE
RCP	REINFORCED CONCRETE PIPE	PRVC	POINT OF REVERSE VERTICAL CURVE



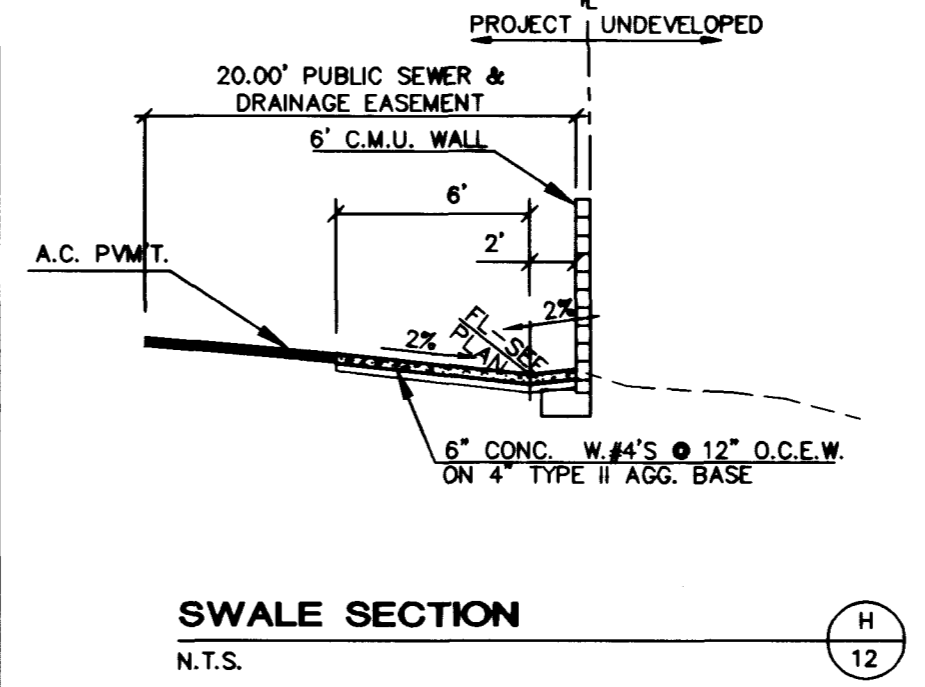
RETAINING WALL SECTION
N.T.S. (E) 11, 12



BLOCK WALL SECTION
N.T.S. (F) 12



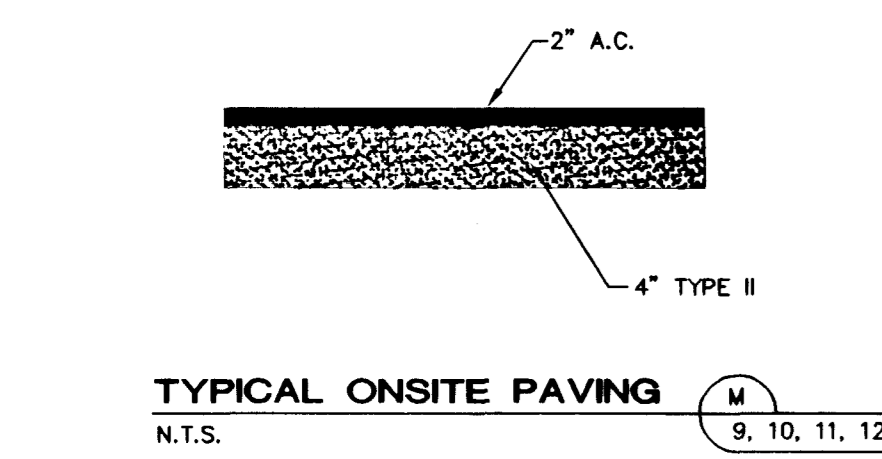
SECTION
N.T.S. (G) 10, 11, 12



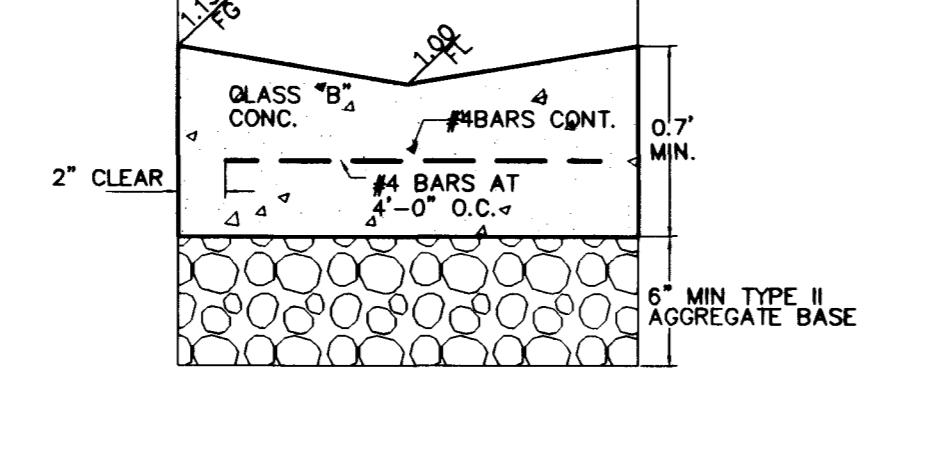
SWALE SECTION
N.T.S. (H) 12

LEGEND

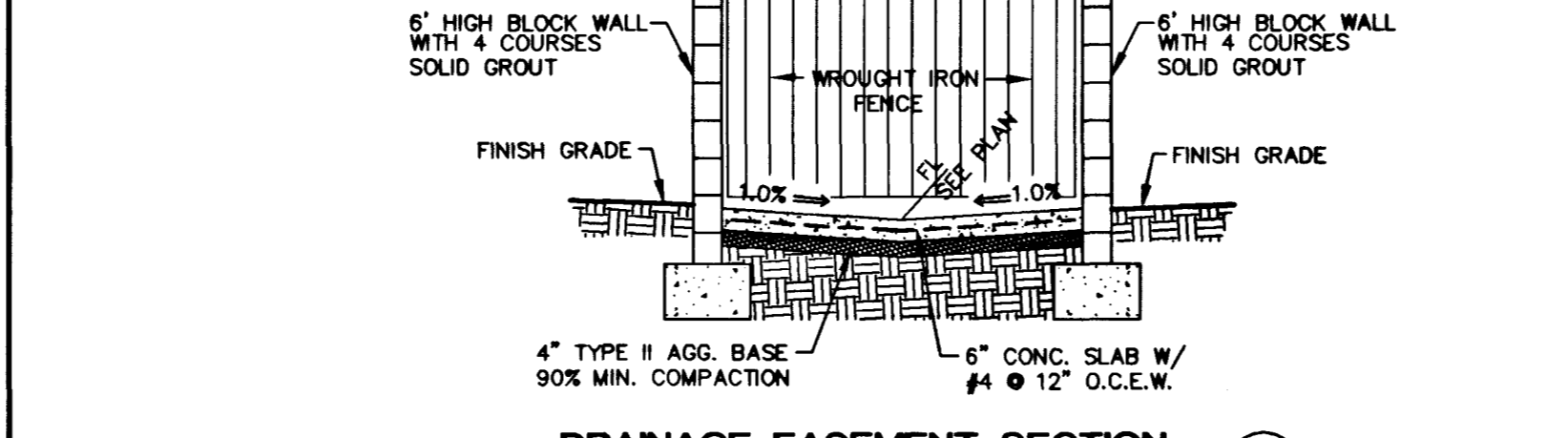
DESCRIPTION	PROPOSED	EXISTING
CONTOUR (5' INTERVAL)		
CONTOUR (1' INTERVAL)		
PAD GRADE	(42.1)	(36.9)
EDGE OF PAVEMENT		
SIDEWALK RAMP		
SLOPE AND FLOW DIRECTION	0.50%	(0.50%)
RETAINING WALL		
CONC. BLOCK WALL		
R/W OR P/L		
CENTER LINE		
BACK OF CURB		
LIP OF GUTTER		
SIDEWALK		
SETBACK LINE		
SIDEWALK DRAIN PER C.L.V. DWG # 236		
SCARP AREA		
SEWER LINE		
WATER LINE		
STORM DRAIN		
FIRE HYDRANT		
MATCH LINE		



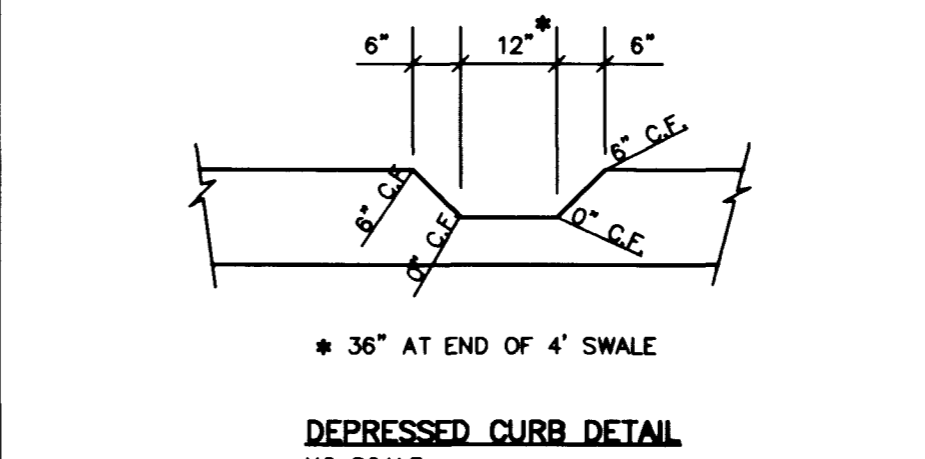
TYPICAL ONSITE PAVING
N.T.S. (M) 9, 10, 11, 12



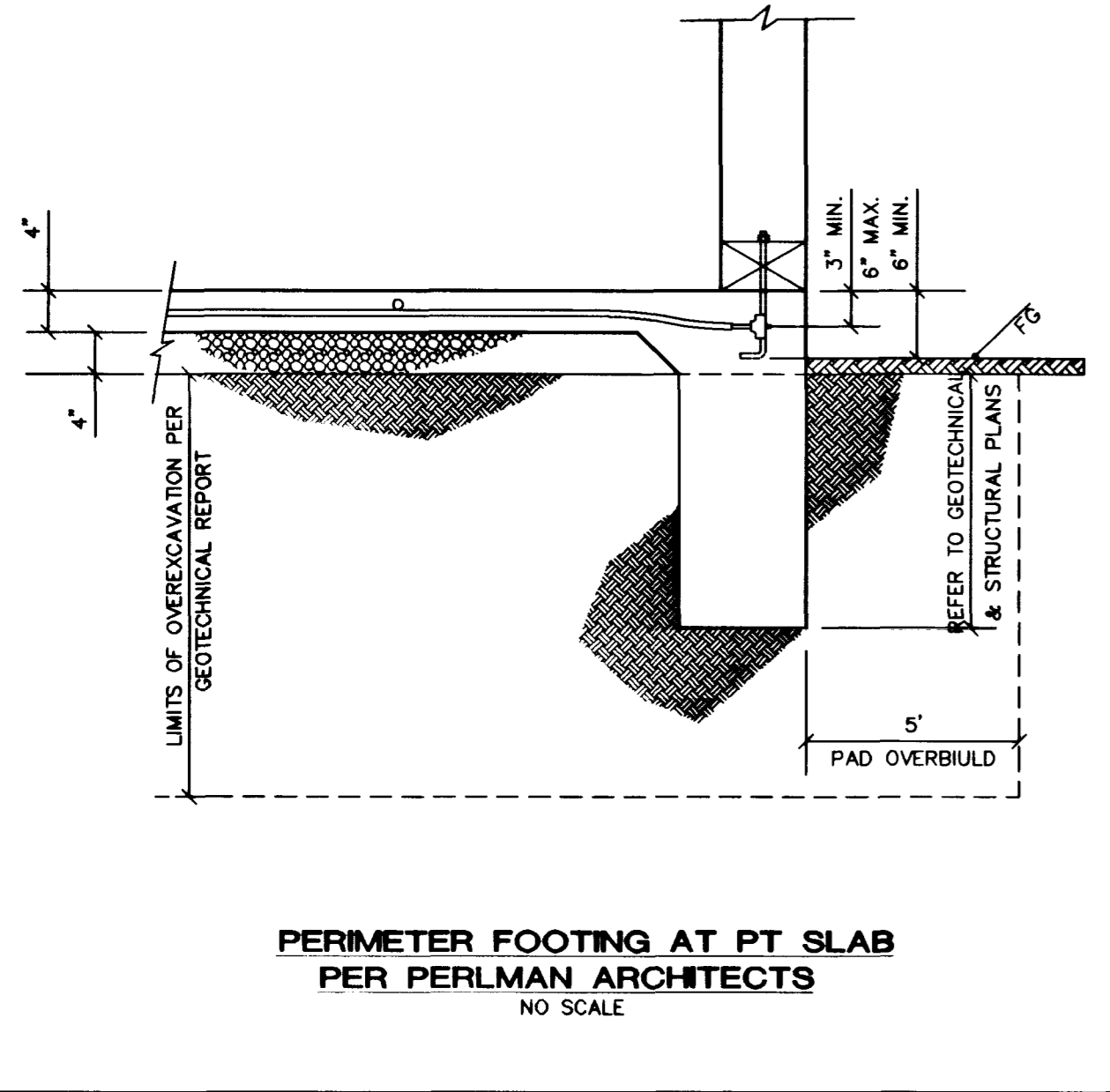
4' CONCRETE SWALE
N.T.S. (J) 9, 10, 11, 12



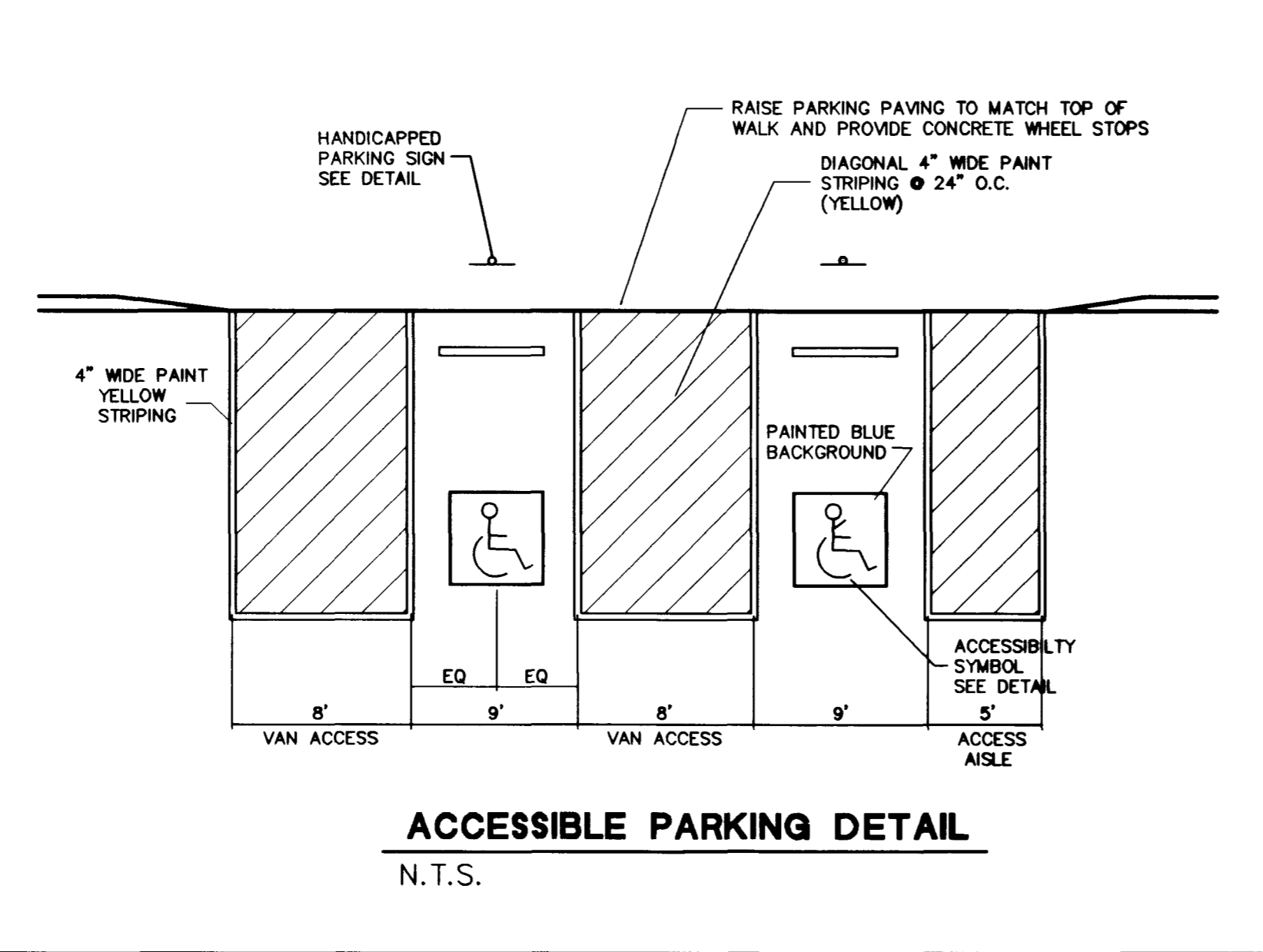
DRAINAGE EASEMENT SECTION
N.T.S. (K) 10, 11, 12



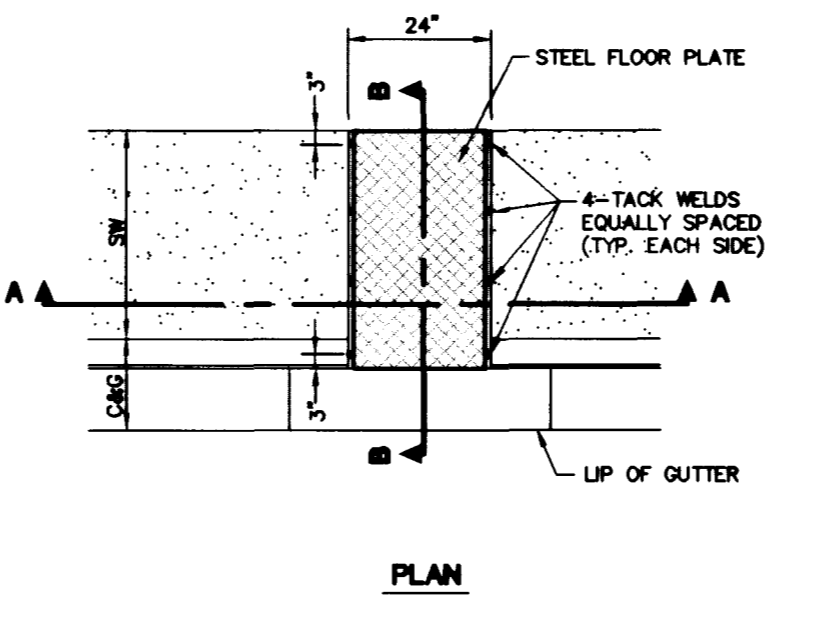
DEPRESSED CURB DETAIL
NO SCALE (L)



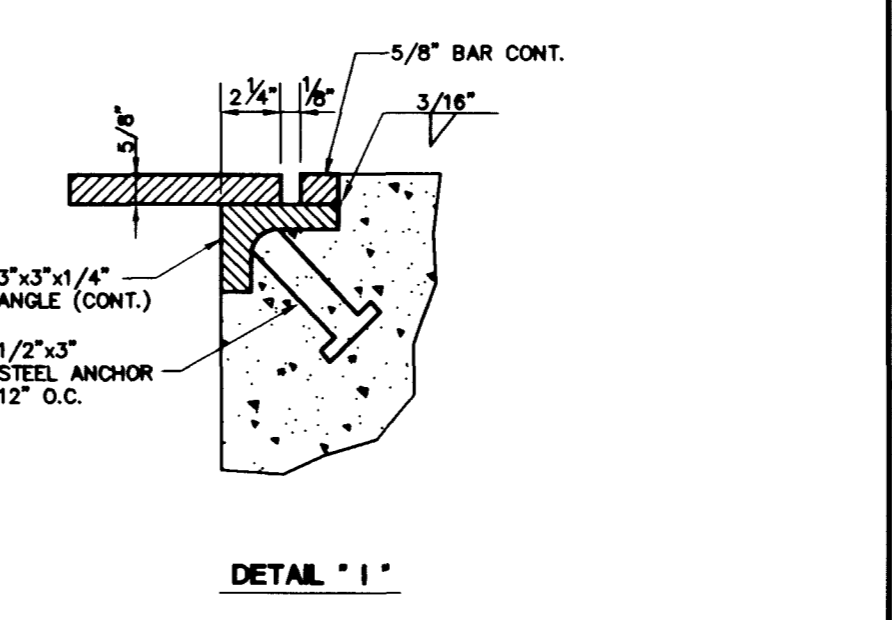
PERIMETER FOOTING AT PT SLAB
PER PERLMAN ARCHITECTS
NO SCALE



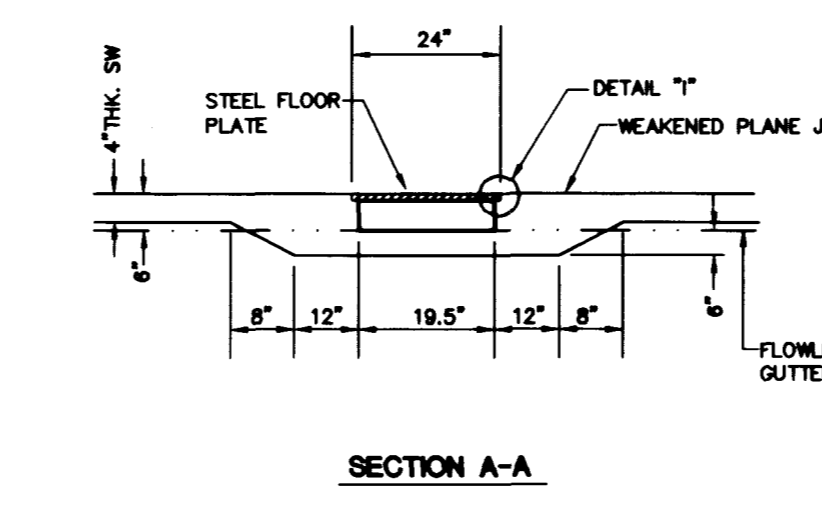
ACCESSIBLE PARKING DETAIL
N.T.S. (N)



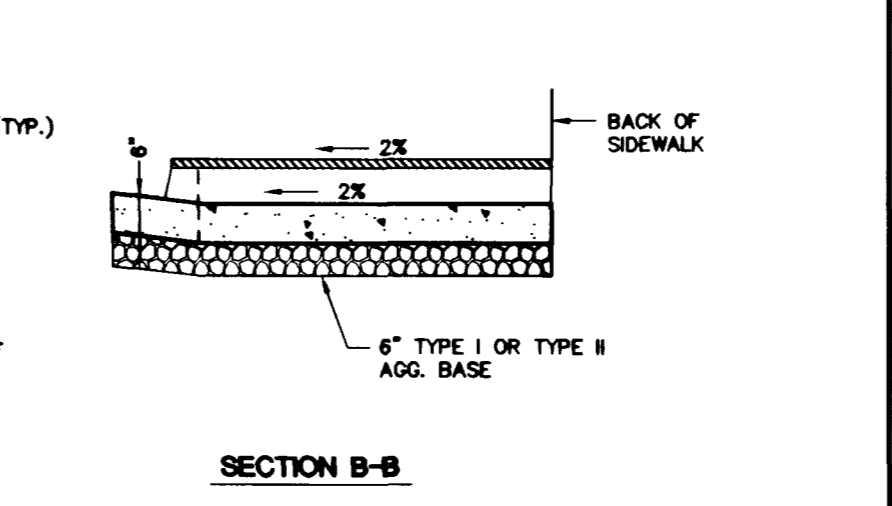
PLAN



DETAIL "1"



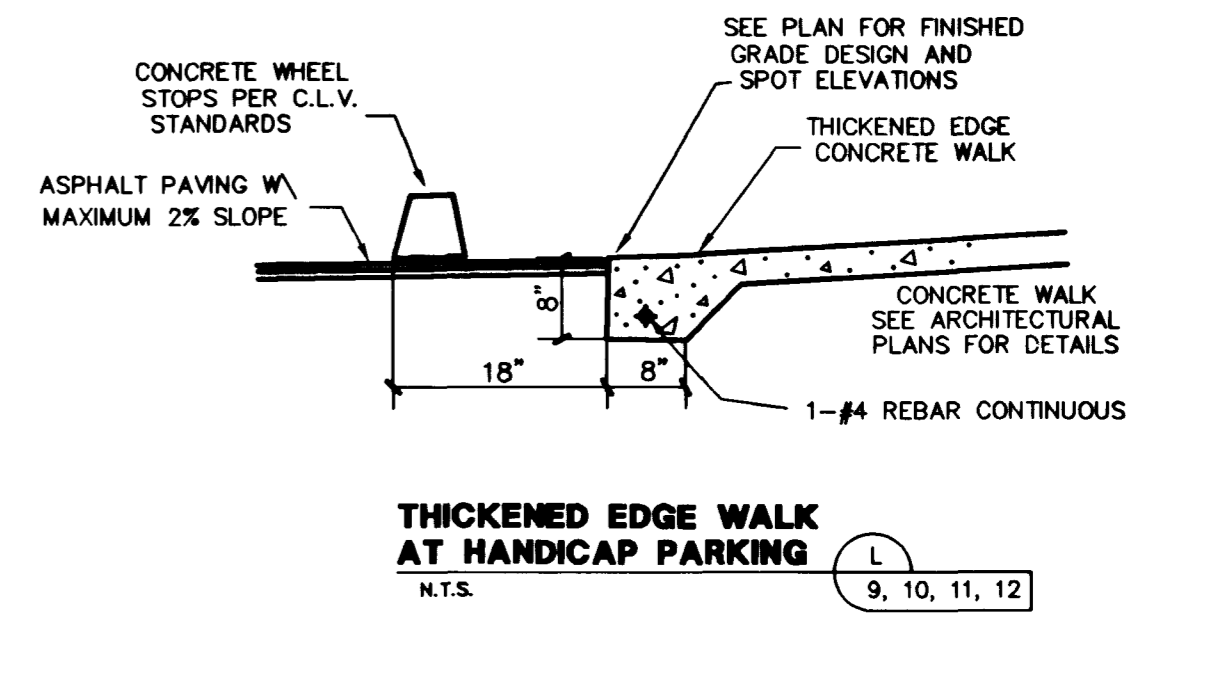
SECTION A-A



SECTION B-B

- NOTES:**
1. IF WIDTH OF PLATE IS GREATER THAN 24", A SPECIAL DESIGN IS REQUIRED.
 2. ALL EXPOSED METAL PARTS SHALL BE GALVANIZED AND ALL GALVANIZING DAMAGED BY FABRICATION OR INSTALLATION SHALL RECEIVE TWO COATS OF ALUMINUM PAINT (GALVONOX OR EQUAL).

SIDEWALK DRAIN
PER STD DWG. NO 236



THICKENED EDGE WALK AT HANDICAP PARKING
N.T.S. (L) 9, 10, 11, 12

WALL NOTES:

1. ALL WALLS NEW OR EXISTING ARE SHOWN ONLY FOR THE PURPOSE OF GRADING RELATIONSHIP.
2. THE STRUCTURAL AND ARCHITECTURAL DESIGN OF ALL WALLS (RETAINING OR NON-RETAINING) MUST BE APPROVED BY THE CITY BUILDING DEPARTMENT.
3. SEE PLOT PLAN FOR RETAINING WALLS DETAILS AT INTERIOR SIDE LOT LINES, WHERE PAD ELEVATIONS EXCEEDS 1.0 FEET DIFFERENCE.

Call before you Dig
1-800-227-2600

Call before you Overhead
1-702-593-6111

BASIS OF BEARINGS
THE BASIS OF BEARINGS FOR THIS PROJECT IS GRID NORTH, AS DEFINED BY THE NEVADA COORDINATE SYSTEM OF 1983 (NCS83), EAST ZONE, (2701), AS DETERMINED BY NORTH LAS VEGAS HARN CONTROL POINTS 700, 704, 714, AS SHOWN ON A RECORD OF SURVEY ON FILE IN THE CLARK COUNTY, NEVADA, RECORDER'S OFFICE IN FILE 62 OF SURVEYS, AT PAGE 52.

PROJECT BENCHMARK
TBM, T169 3" BRASS CAP USC & GS 50' EAST OF US 95 & 200' SOUTH OF CENTENNIAL ON 88 DATUM METER 734.5745=2410.02 FEET
TBM # 1LV9028NNE6

BIG SKY DEVELOPMENT
1300 N. BUREAU DRIVE
LAS VEGAS, NEVADA 89129
(702)-395-2050

GRADING DETAILS
DEER SPRINGS APARTMENTS

SHEET
DRAWN BY: MARCH, 1989
DESIGNED BY: JAT
CHECKED BY: JAT
PROJECT NO: 5522

SCALE: NONE HORIZ. NONE VERT.
SHEET
Q5
13 OF 17 SHEETS
DRAWING NO.
107-V3108

