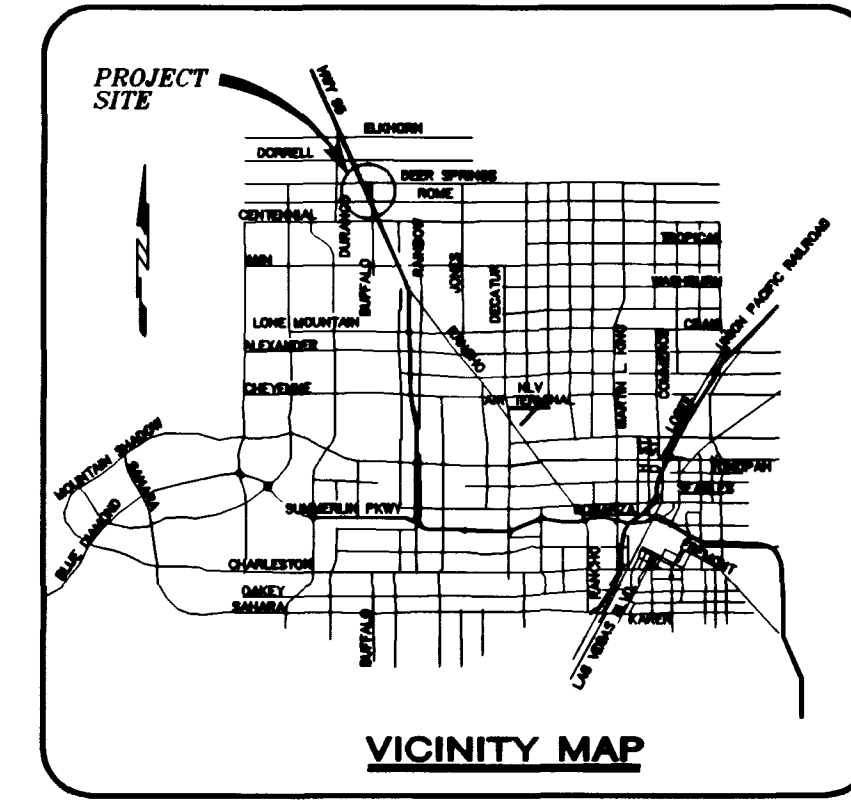


**8" PUBLIC SEWER
STA 15+83.22 TO STA 21+23.13**

FOR CONTINUATION
SEE PLAN VIEW ON SHEET SS1



PROJECT BENCHMARK

TBM, T169 3" BRASS CAP USC & GS 50' EAST OF
US 95 & 200' ± SOUTH OF CENTENNIAL ON
88 DATUM METER 734.5745=2410.02 FEET
TBM # 1LV9028NNE6

BASIS OF BEARINGS

THE BASIS OF BEARINGS FOR THIS PROJECT IS GRID
NORTH, AS DEFINED BY THE NEVADA COORDINATE SYSTEM
OF 1983 (NCS83), EAST ZONE, (2701), AS DETERMINED
BY NORTH LAS VEGAS HARN CONTROL POINTS
700, 704, 714, AS SHOWN ON A RECORD OF SURVEY
ON FILE IN THE CLARK COUNTY, NEVADA, RECORDER'S
OFFICE IN FILE 82 OF SURVEYS, AT PAGE 52.

Avoid cutting underground
utility lines. It's costly.

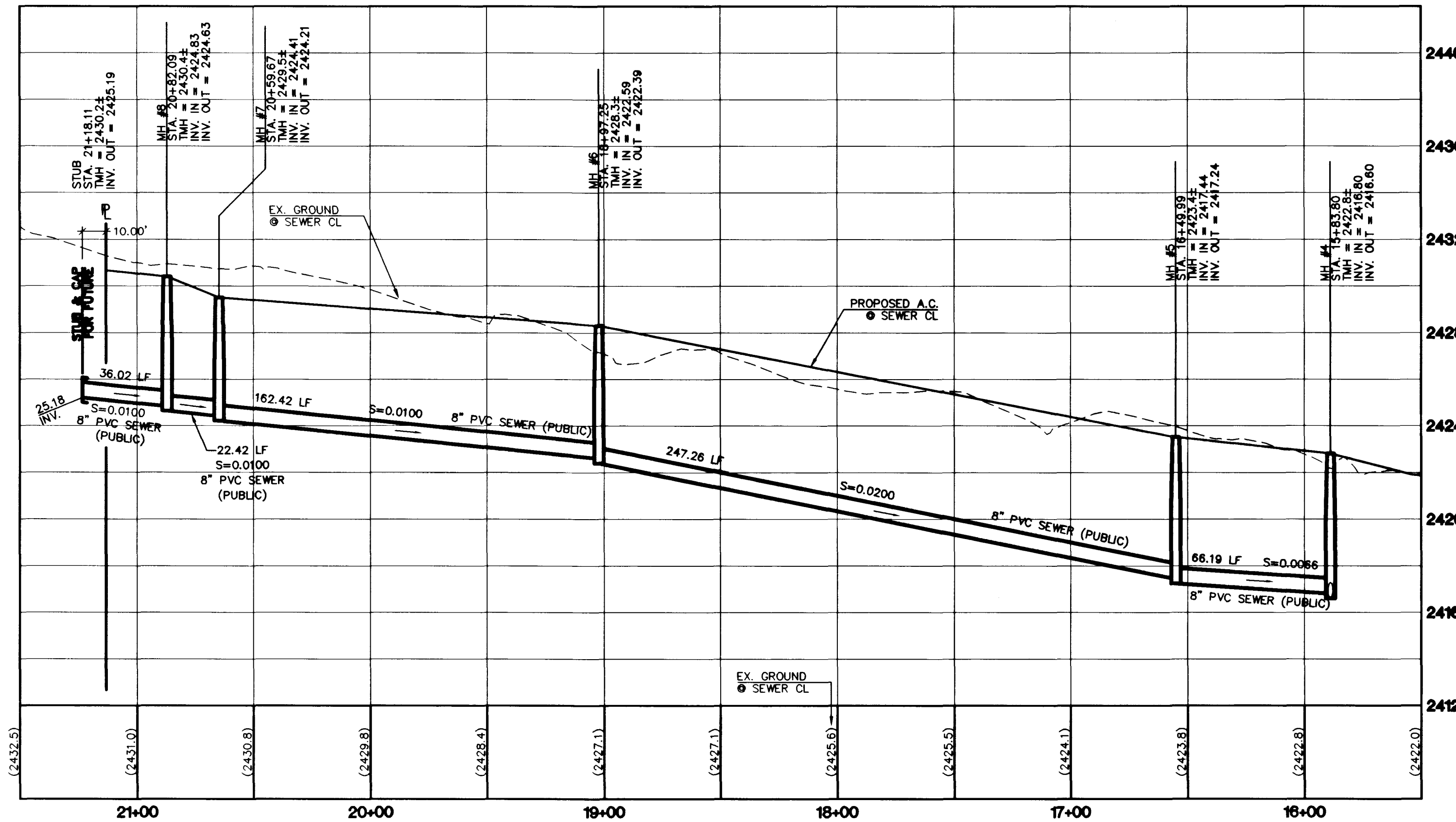
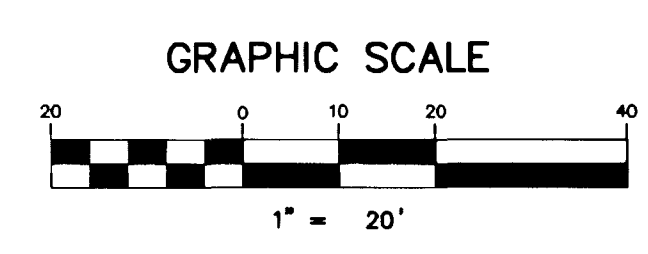
Avoid overhead power
line contact

**Call
before you
Dig**
1-800-227-2600

**Call
before you
OVERHEAD**
1-702-593-6111

NOTE: CONTRACTOR SHALL VERIFY HORIZONTAL AND
VERTICAL LOCATION OF EXISTING UTILITIES AND
NOTIFY THE DESIGN ENGINEER IMMEDIATELY OF
ANY DISCREPANCIES PRIOR TO CONSTRUCTION.

NOTE:
ALL STATIONING IS BASED ON SEWER
LENGTHS FROM MANHOLE TO MANHOLE.



DRAWN BY: db		DESIGNED BY: db		CHECKED BY: TEH		PROJECT NO.: 5322	
MARCH 1999		MARCH 1999		MARCH 1999		SCALE: 1"=40' HORIZ. 1"=20' VERT.	
SHEET SS2		SHEET 16 OF 17 SHEETS		DRAWING NO. 107-V3108		SEAL PROFESSIONAL ENGINEER STATE OF NEVADA THOMAS E. HAYES No. 8426 6-14-99	
BIG SKY DEVELOPMENT 3320 N. BUFFALO DRIVE LAS VEGAS, NEVADA 89129 (702) 393-2550		PUBLIC 8" SEWER LINE PLAN AND PROFILE STA 15+83.22 TO STA 21+23.13		DEER SPRINGS APARTMENTS		2727 SOUTH RAINBOW BOULEVARD LAS VEGAS, NEVADA 89102-5148 PH. (702) 873-7550 FAX (702) 382-2597 TBM # 1LV9028NNE6 novads CONSULTING ENGINEERS • PLANNERS • LAND SURVEYORS	
REV	DATE	BY	REVISION				

