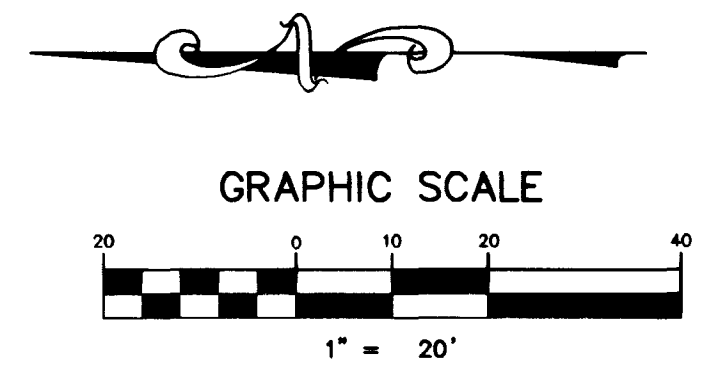
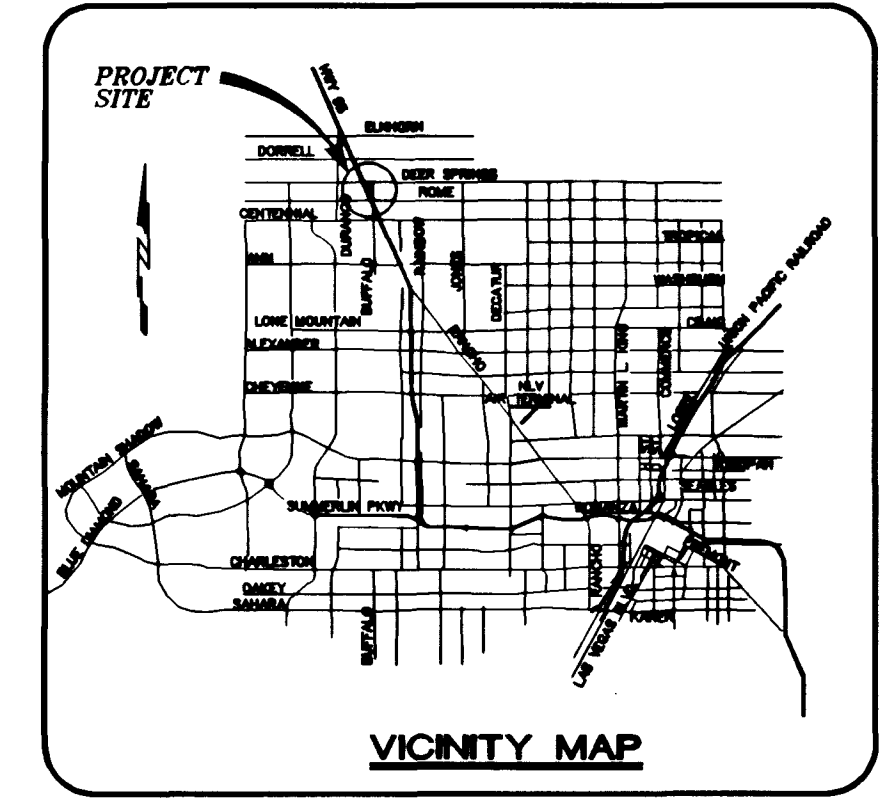
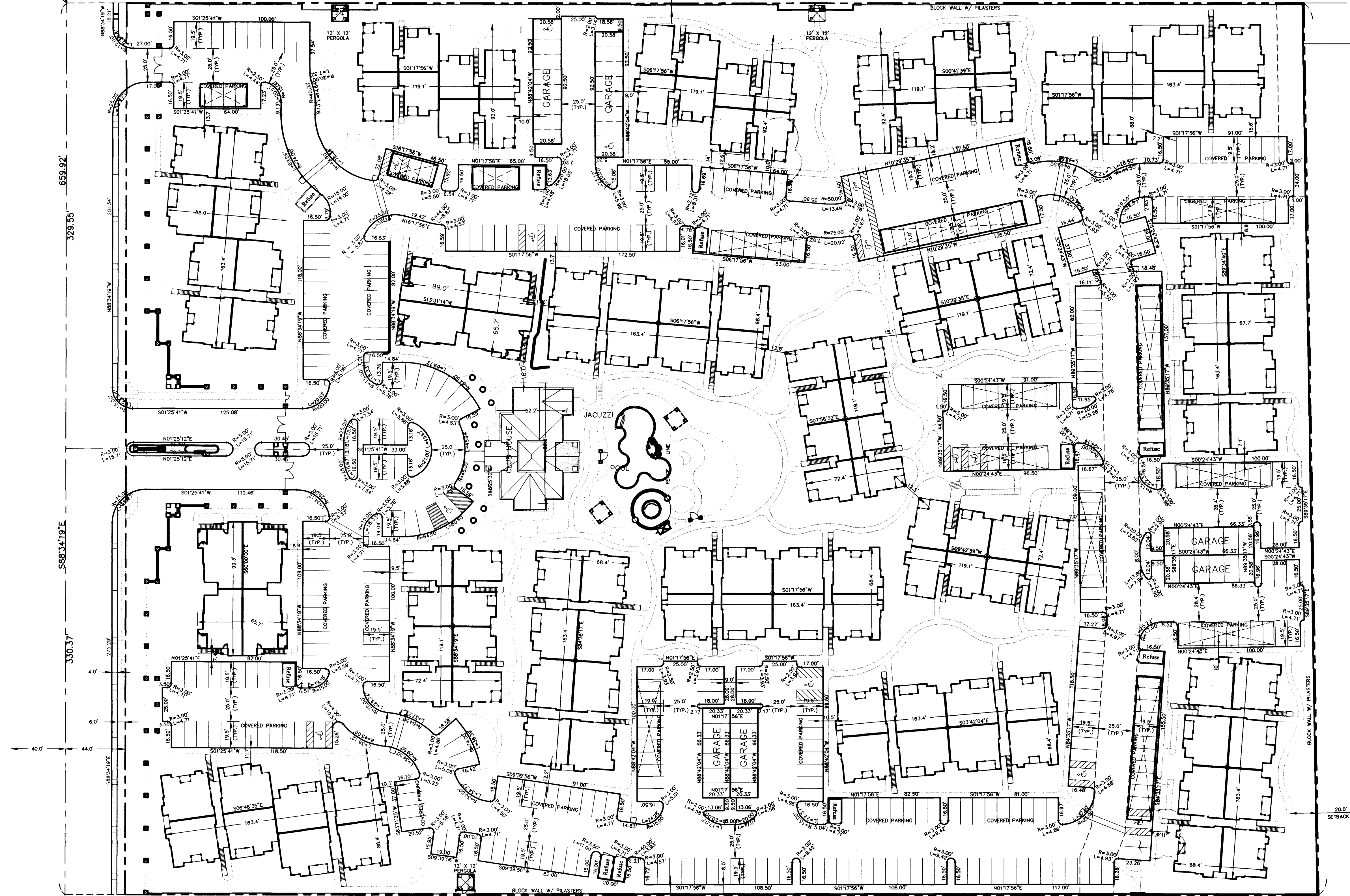


E 1/16
C - C
SZ1



PROJECT BENCHMARK
TBM, T189 3" BRASS CAP USC & GS 50' EAST OF
US 95 & 200' ± SOUTH OF CENTENNIAL ON
88 DATUM METER 734.5745=2410.02 FEET
TBM # 1LV9028NNE6

BASIS OF BEARINGS
THE BASIS OF BEARINGS FOR THIS PROJECT IS GRID
NORTH, AS DEFINED BY THE NEVADA COORDINATE SYSTEM
OF 1983 (NCS83), EAST ZONE, (2701), AS DETERMINED
BY NORTH LAS VEGAS HARN CONTROL POINTS
700, 704, 714, AS SHOWN ON A RECORD OF SURVEY
ON FILE IN THE CLARK COUNTY, NEVADA, RECORDER'S
OFFICE IN FILE 82 OF SURVEYS, AT PAGE 52.



659.92'
329.55'
588.3419'E
330.37'
40.0'
44.0'
588.3419'E
687.68'

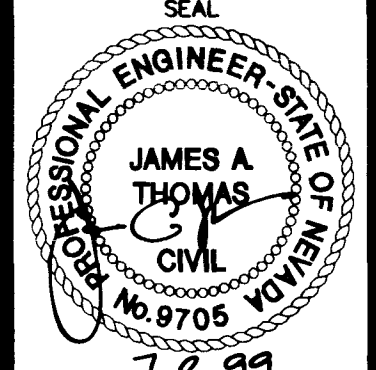
C 1/4
SZ1

BIG SKY DEVELOPMENT
3320 N. BUFFALO DRIVE
LAS VEGAS, NEVADA 89129
(702) 395-2050

HORIZONTAL CONTROL PLAN
DEER SPRINGS APARTMENTS

DRAWN BY: T.J. / dtb
DESIGNED BY: T.J.
CHECKED BY: TEH
PROJECT NO.: 5522

MARCH 1999
MARCH 1999
MARCH 1999
SCALE: 1"=40' HORIZ.
N/A VERT.



1.2.99
SHEET
HC
17 OF 17 SHEETS
DRAWING NO.
107-V3108

REVISED BLDG. ROTATION (#7/14) / A/B SETBACK DIM. 1/08/2009
TEH
DATE
BY
REVISION

H:\cava\landev\5522\5522hc.dwg Thu Jul 01 17:57:58 1999 Plotted by : dtb

16911 SV 17844

