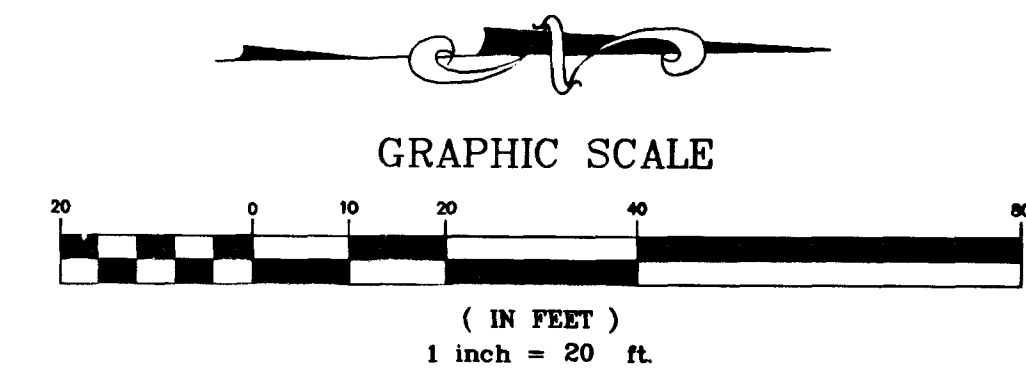


These plans and the design criteria contained herein are based upon the information presently known by the engineer and intended solely as a general guideline for construction. All construction shall be in conformance with all applicable local, state and federal statutes, laws, codes, regulations and ordinances, including but not limited to the Federal Fair Housing Amendments Act, Americans With Disabilities Act, the Architectural Barriers Act and any applicable uniform standards, specifications or drawings. The person or entity performing the construction shall be solely responsible to make sure construction is in conformance with all local, state and federal statutes, laws, codes, regulations, standards, guidelines and ordinances and further, is in conformance with any applicable design criteria, including but not limited to soils reports, traffic studies, geotechnical reports, architectural plans and specifications, drainage plans or studies and any other criteria, standards or requirements listed in the plans or the general notes related to these plans or provided by anyone in reference to this project.



Call before you Dig
1-800-227-2600

Call before you Overhead
1-702-593-6111



CONSTRUCT A.C. IN THIS AREA PER DEER SPRINGS WAY STREET SECTION ON SHEET G5

CONSTRUCTION NOTES:
INSTALL 8" MIN. DIAMETER PVC PIPE UNDER GENERAL WHERE APPLIES. (TYP.)

FOR GENERAL NOTES / LEGEND REFER TO SHEET C5

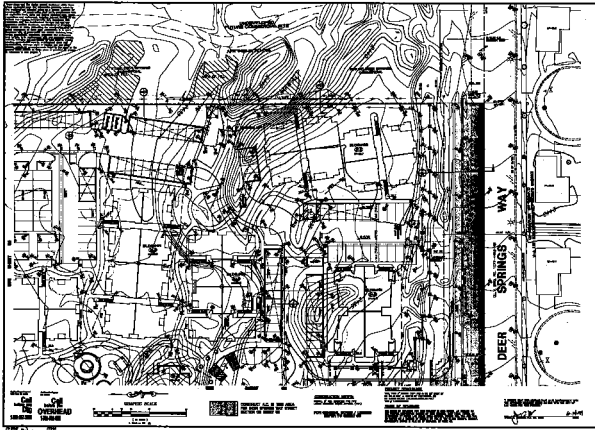
PROJECT BENCHMARK
TBM, T169 3" BRASS CAP USC & GS 50' EAST OF US 95 & 200' ± SOUTH OF CENTENNIAL ON 88 DATUM METER 734.5745=2410.02 FEET TBM # 1LV9028NNE6

BASIS OF BEARINGS
THE BASIS OF BEARINGS FOR THIS PROJECT IS GRID NORTH, AS DEFINED BY THE NEVADA COORDINATE SYSTEM OF 1983 (NCS83), EAST ZONE, (2701), AS DETERMINED BY NORTH LAS VEGAS HARN CONTROL, POINTS 700, 704 AND 714, AS SHOWN ON A RECORD OF SURVEY ON FILE IN THE CLARK COUNTY, NEVADA, RECORDER'S OFFICE IN FILE 82 OF SURVEYS, AT PAGE 52.

I CERTIFY THAT THIS GRADING PLAN IS IN CONFORMANCE WITH THE APPROVED DRAINAGE STUDY ON FILE WITH THE CITY OF LAS VEGAS FOR THIS PROJECT.

JAMES A. THOMAS, P.E. NO. 9705
DATE 6.14.99

PROFESSIONAL ENGINEER - STATE OF NEVADA JAMES A. THOMAS CIVIL NO. 9705 6.14.99	
DRAWN BY: MCA MARCH, 1999	SHEET Q1 OF 17 SHEETS
DESIGNED BY: RBF MARCH, 1999	TITLE DEER SPRINGS APARTMENTS
CHECKED BY: PROJECT NO:	SCALE: 1" = 20' HORZ. VERT.
DRAWING NO. 107-V3108	
BIG SKY DEVELOPMENT 3320 N. BUFFALO DRIVE LAS VEGAS, NEVADA, 89129 (702) 395-2050	
VTM nevada 2727 SOUTH RAINBOW BOULEVARD LAS VEGAS, NEVADA 89102-5148 PH. (702) 873-7550 FAX (702) 362-5597 CONSULTING ENGINEERS • PLANNERS • LAND SURVEYORS	



	SHEET NO. _____ DATE _____	PROJECT NAME _____ SHEET NO. _____	SEE CITY DEVELOPMENT DEPARTMENT
	TITLE _____ DRAWN BY _____ CHECKED BY _____	SEE SPONSOR AGREEMENTS	