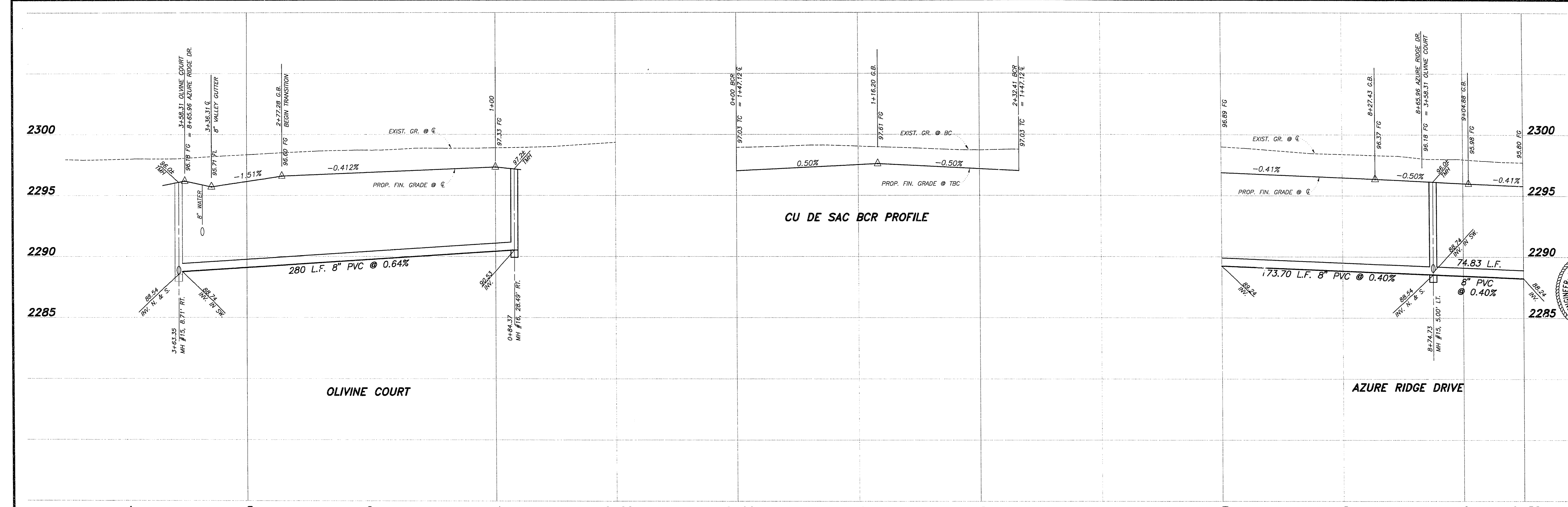
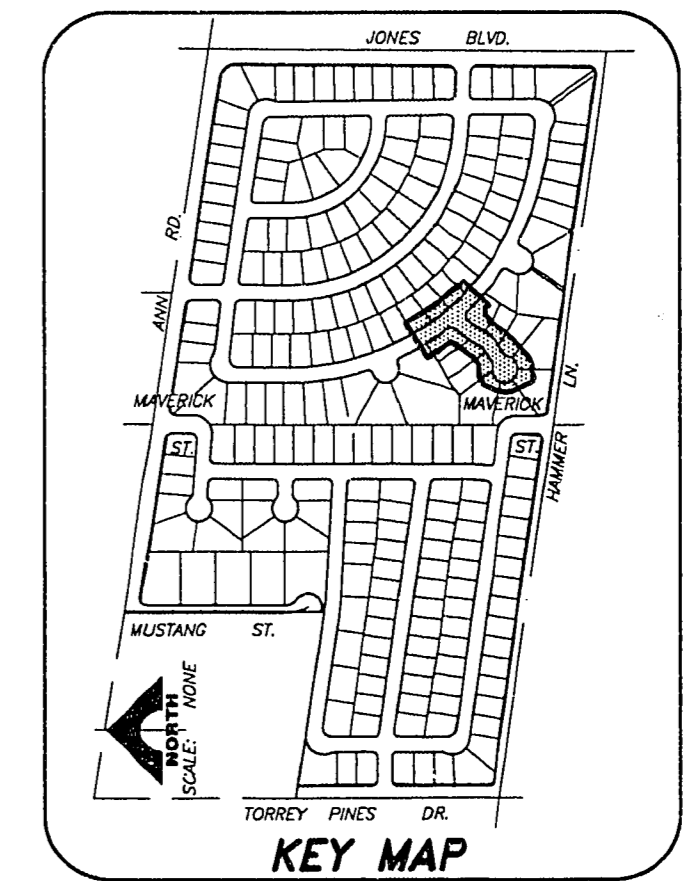
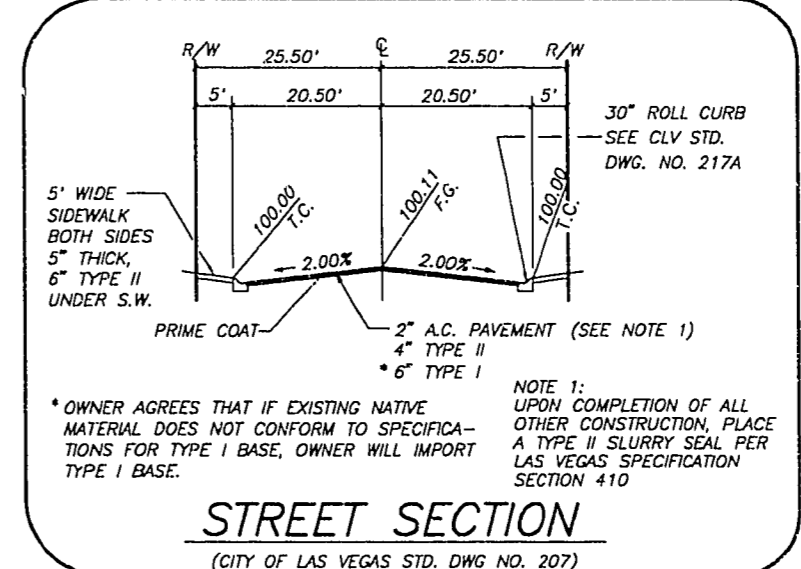
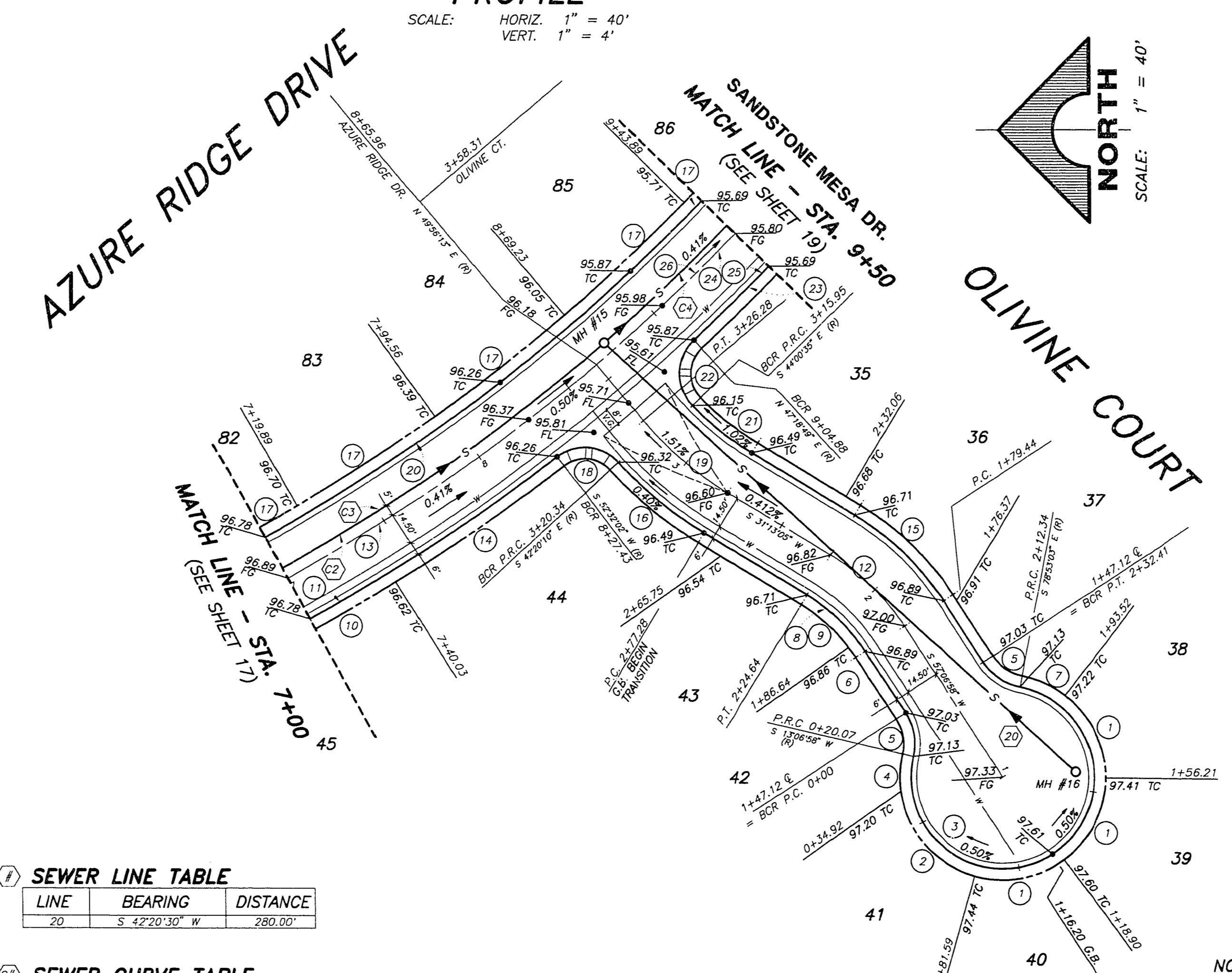


JOB NO. 770.006
 PLOTTED: 05/01/94 10:20 am DRAWING: C:\COURT\770.006-18.BT: esp



PROFILE
 SCALE: HORIZ. 1" = 40'
 VERT. 1" = 4'



B.C. CURVE TABLE

CURVE	DELTA	RADIUS	LENGTH	TANGENT
1	52°46'47"	40.50'	37.31'	20.10'
2	66°01'28"	40.50'	46.67'	26.31'
3	2°22'00"11"	40.50'	192.22'	---
4	21°00'42"	40.50'	14.85'	7.51'
5	46°00'01"	25.00'	20.07'	10.61'
6	04°07'36"	75.50'	5.73'	2.85'
7	26°37'31"	40.50'	18.82'	9.58'
8	25°53'53"	75.50'	35.93'	18.28'
9	21°48'15"	75.50'	30.21'	15.29'
10	06°20'07"	870.50'	96.25'	48.18'
11	12°13'35"	870.50'	185.76'	93.23'
12	25°53'53"	120.00'	45.20'	23.99'
13	18°43'09"	850.00'	277.70'	140.10'
14	05°53'29"	870.50'	89.51'	44.79'
15	25°53'53"	120.00'	54.47'	27.71'
16	16°28'45"	170.50'	48.94'	25.64'
17	05°01'59"	829.50'	72.87'	36.46'
18	85°07'48"	20.00'	29.72'	18.37'
19	18°43'09"	150.00'	43.01'	24.72'
20	81°51'57"	829.50'	1185.21'	719.37'
21	14°46'20"	129.50'	33.39'	16.79'
22	91°19'24"	30.00'	31.88'	20.47'
23	05°51'53"	870.50'	89.10'	44.59'
24	18°43'08"	850.00'	277.70'	140.10'
25	12°13'35"	870.50'	185.35'	93.03'
26	81°51'57"	850.00'	1214.50'	737.15'

SEWER LINE TABLE

LINE	BEARING	DISTANCE
20	S 42°20'30" W	280.00'

SEWER CURVE TABLE

CURVE	DELTA	RADIUS	LENGTH	TANGENT
2	18°37'55"	845.00'	274.78'	138.62'
3	81°51'57"	845.00'	1207.36'	732.81'
4	18°48'22"	845.00'	277.35'	138.94'

MH COORDINATES

MH #	NORTH	EAST
5	4,940.349	4,185.850
15	4,176.059	4,125.695
16	3,969.100	3,817.101
17	4,408.723	3,983.414
18	4,380.606	3,908.907
19	4,228.897	3,921.766
20	4,971.623	3,822.435

NOTE:
 SEE SHEET 10 FOR SIDEWALK
 RAMP TRANSITION LENGTHS.

REV.	DATE	DESCRIPTION

10118 5-5-94
 P.E. NO. 10118
 S. WALLACE, INC.
 ENGINEER-STATE OF NEVADA
 1555 SOUTH RAINBOW BLVD./LAS VEGAS, NEVADA 89102

DEL WEBB OF NEVADA, INC.
 COPPER CREST
 AZURE RIDGE DRIVE
 & OLIVINE COURT

SHEET
18
 OF 40 SHEETS

11-12-13

107Y-4320