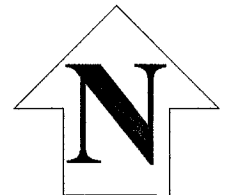


PURPOSE OF PROJECT  
REPLACE A FAULTY SECONDARY  
& SERVICE CABLE  
AT 209 BRADSHAW WAY

MAINTENANCE PROJECTS REQUIRE THE  
USE OF SCHEDULE 40 FOR ALL 2",  
3", & 4" CONDUIT. D.B. 60 IS REQUIRED  
FOR ALL 6" CONDUIT. IF COILABLE CONDUIT  
IS USED, IT MUST BE H.D.P.E. WITHOUT  
RE-GROUND MATERIALS.

NOTE: PRIOR TO THE START OF  
TRENCHING CALL ALI MOHAMED  
AT 702-912-9409 OR RICK BEAN  
AT 702-378-1377 TO ARRANGE  
A FIELD MEETING.



T.R.S.: 2060-33  
APN: 138-33-516-024

RETRENCH

EXIST. NEW NVE WORK AND SERVICES TO CONSIST OF:  
--- 1/0 TRIPLEX, 15 KV AL PRIMARY CABLE IN 4" PLASTIC CONDUIT.  
--- 1/0, 15 KV AL PRIMARY CABLE IN 2" PLASTIC CONDUIT.  
--- INSTALL NEW CABLE IN EXISTING VACANT CONDUIT.

EX. 500 500 500 MCM TRIPLEX SECONDARY CABLE IN 4" PLASTIC CONDUIT (CONDUIT BY CONTRACTOR).  
EX. 350 350 350 MCM TRIPLEX SECONDARY CABLE, CABLE IN CONDUIT.  
EX. 4/0 4/0 4/0 AWG TRIPLEX SECONDARY CABLE, CABLE IN CONDUIT.  
EX. 2/0 2/0 2/0 AWG TRIPLEX SECONDARY CABLE, CABLE IN CONDUIT.

--- CONDUIT LOCATING DEVICE 18" ABOVE STUBOUT.  
--- SINGLE PHASE PRIMARY POLE RISER PER NVE U.G. STD. OEP-105.  
--- THREE PHASE PRIMARY POLE RISER PER NVE U.G. STD. OEP-106.

--- SECONDARY RISER PER NVE U.G. STD. SSP-2.  
--- SINGLE PHASE RESIDENTIAL PADMOUNTED TRANSFORMER WITH SIZE AS NOTED, 7200-120/240V, PER NVE U.G. STD. UT-113.

(2) SINGLE PHASE RESIDENTIAL COMMERCIAL TRANSFORMERS WITH SIZE AS NOTED, 7200-120/240V, CONNECT OPEN WYE-OPEN DELTA FOR THREE PHASE 120-240V SERVICE, PER NVE U.G. STD. UT-115, WHERE APPLICABLE.

TERMINATION OF ALL MODULES, MAKES, SPLICES AND FINAL CONNECTIONS.

NVE TO PROVIDE 6" TO (3)2" REDUCERS.  
NVE TO PROVIDE 4" TO (1)2" REDUCERS.

NVE TO COIL PRIMARY CABLE IN PULLBOX FOR FUTURE SPLICES, WHERE APPLICABLE.

NVE TO CUT EXISTING CONDUIT AND TERMINATE PRIMARY CABLES ON THE LOAD BREAK MODULE, WHERE APPLICABLE.

100 FEET OUTSIDE RESIDENTIAL DEVELOPMENT MARKER. DCA TO PAY CONDUIT AND RISER COSTS INSIDE OF MARKER. CUSTOMER RESPONSIBLE FOR COSTS OUTSIDE MARKER.

CUSTOMER RESPONSIBILITY [ DCA RESPONSIBILITY

CONTRACTOR TO FURNISH AND INSTALL:

ALL TRENCHING & BACKFILL, MEETING APPLICABLE NVE STANDARD (RT-7, RT-8, OR RT-12).

3" PLASTIC CONDUIT, PER NVE U.G. STD. RC-1 AND RC-2.  
3" PLASTIC CONDUIT BENDS (90°, 45°) WITH 36" MIN. RADIUS. (IF CONDUIT LENGTH IS UNDER 100')

3" RGS BENDS (90°, 45°) WITH 36" MINIMUM RADIUS, TAPED OR PVC COATED. (IF CONDUIT LENGTH IS OVER 100')

IF THE CUSTOMER CHOOSES TO INSTALL A STREET CROSSING, NVE REQUIRES A 4" CONDUIT PER SECONDARY CABLE, AND A 2" CONDUIT PER 1/0 CABLE.

2" DB120 PLASTIC CONDUIT (INCLUDING SWEEPS OR RISERS FOR HANDHOLES, TRANSFORMERS, PULLBOXES, ETC.).

2" SCH.40 PLASTIC CONDUIT BENDS (90°, 45°) WITH 48" MINIMUM RADIUS (IF CONDUIT LENGTH IS UNDER 500').

2" FIBERGLASS CONDUIT BENDS (90°, 45°) WITH 36" MINIMUM RADIUS (IF CONDUIT LENGTH IS OVER 500').

COUPLING FOR 2", 4", OR 6" CONDUITS (AS APPLICABLE).

ALL SERVICE CONDUIT - 2" MINIMUM DB60 PVC GRAY (RISER: RGS REQUIRED) WITH 5/32" POLYPROPYLENE PULL LINE WITH A MIN. BREAKING STRENGTH OF 1250 LBS.

17" X 30" HANDHOLE, PER NVE U.G. STD. RS-1 (WITH 8" COLLAR WHERE APPLICABLE).

2'-6" X 4' X 4' SPLICE PULLBOX PER NVE U.G. STD. RS-80.

3' X 7' X 4' PULLBOX PER NVE U.G. STD. RS-82.

PAD FOR (1) SINGLE PHASE RESIDENTIAL TRANSFORMER, PER NVE U.G. STD. RS-13 AND RS-5.

PAD FOR (2) SINGLE PHASE RESIDENTIAL TRANSFORMERS, PER NVE U.G. STD. RS-14 AND RS-5.

PAD FOR (1) SINGLE PHASE COMMERCIAL TRANSFORMER, PER NVE U.G. STD. RS-19 AND RS-5.

VEHICLE PROTECTIVE BARRIERS PER NVE U.G. STD. RS-6, WHERE APPLICABLE.

NPL (DAVE 702-591-6720)  
CITY OF LAS VEGAS PERMIT REQUIRED\*

CONTACT CLV LAND DEVELOPMENT (228-6371)  
CLV CONSTRUCTION SERVICES MUST BE NOTIFIED 24 HOURS PRIOR TO COMMENCING CONSTRUCTION (228-6337)

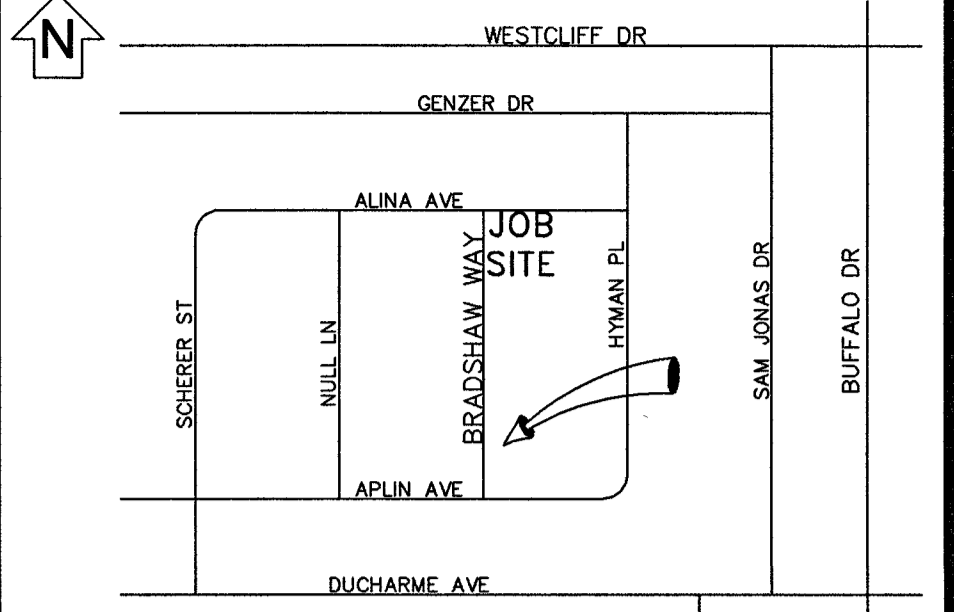
HANSEN DATE  
\*NVE INSPECTOR MUST BE NOTIFIED BY FAX 48 HOURS PRIOR TO COMMENCING CONSTRUCTION & WILL VERIFY CITY PERMIT FOR WORK DONE IN STREETS OR SIDEWALK. FAX PERMIT TO:  
LAS VEGAS NORTH (RYAN CENTER) 402-4354  
LAS VEGAS SOUTH (BELTWAY CENTER) 402-6684

TEMP WIRE RESOLVED BY STATION(S) 0006, 0007, 0009, 0011 & 0012

NOTE: ALL THE ABOVE GROUND UTILITY APPURTENANCES SHALL CONFORM TO THE REQUIREMENTS OF CLV UNIFIED DEVELOPMENT CODE TITLE 19.06 AND 19.08

APPROVED FOR CONSTRUCTION  
THIS APPROVAL IS FOR WORK IN CLV R/W & EASEMENT ONLY. OBTAINING PERMISSIONS OR EASEMENTS FOR WORK SHOWN ON PRIVATE PROPERTY IS THE RESPONSIBILITY OF THE UTILITY.

APPROVAL L19-01382-R001 10/19/2019 PM/DTE



VICINITY MAP (NOT TO SCALE)

EVERY EFFORT HAS BEEN MADE TO IDENTIFY ALL NVE FACILITIES. THE CUSTOMER SHALL CONFIRM THE EXISTENCE AND LOCATION OF THESE FACILITIES.

AVOID HITTING OVERHEAD POWER LINES. IT'S COSTLY.  
YOU DO CALL BEFORE OVERHEAD  
CALL BEFORE YOU DIG  
Avoid cutting underground utility lines. It's costly.  
CALL 811 OR 1-800-227-2600 AND CLARK COUNTY TRAFFIC OPERATIONS 1-702-455-6000

REVISIONS

NO.	DESCRIPTION	DATE	REV BY

MAINTENANCE

NO.	DESCRIPTION	DATE	REV BY

EXHIBIT 'A'

NVEnergy INFORMATION:  
COORDINATOR: SCHMITT, DAVID  
PHONE: --- D.F. ---  
DESIGNER: KOROUS, JENNIFER  
DCA: N/A  
INSPECTOR: 702-402-3008 OR UGI@NVEENERGY.COM  
STAND BY: (702) 402-4450, 4150, 4114, 4117, 4118  
DISTRICT: LAS VEGAS NORTH DISTRICT  
JPA INFORMATION:  
JPA ADMIN PHONE: N/A JPA#: N/A  
CUSTOMER INFORMATION:  
APPLICANT: NV ENERGY  
ENGINEER: N/A  
CONTACT: (NPL) BLANKENSHIP, DAVE \*\* 702-591-6720  
APPROVAL DATE: ---  
GOVERNMENT INFORMATION:  
AGENCY: ---  
APPROVAL DATE: ---

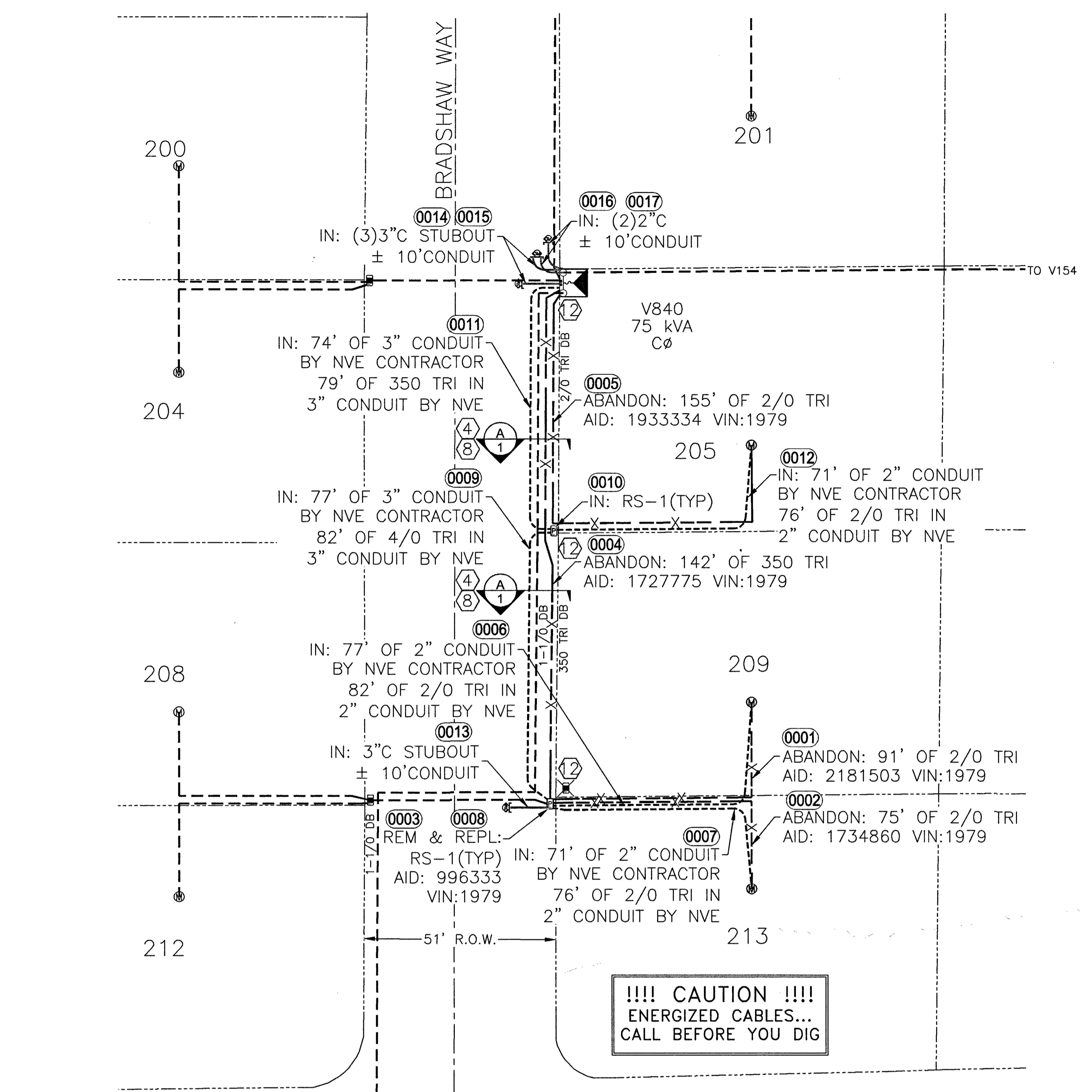
FOR EACH SERVICE POINT (POINT OF DELIVERY), ENERGY FOR EACH TENANT SPACE WILL BE MEASURED THROUGH ONE WATTHOUR METER. ENERGY FOR ALL NON-TENANT SPACE WILL BE MEASURED THROUGH ONE WATTHOUR METER. CONTACT NVE METER OPERATIONS FOR MULTIPLE RATE CLASS INSTALLATIONS.



EMRG SEC & SVC RETRENCH @209 BRADSHAW WAY

WESTCLIFF DR & BUFFALO DR

PROJ #3004293785 SCALE: 1"=30'  
SHEET # 1 OF 1 DATE: 07/16/2019



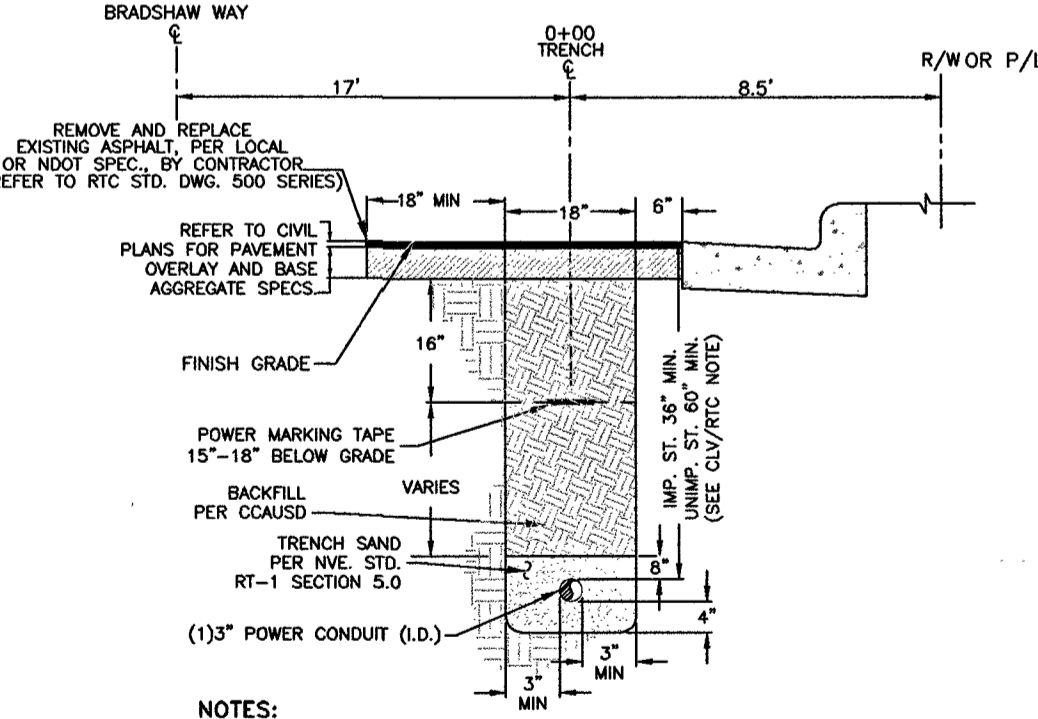
!!!! CAUTION !!!!  
ENERGIZED CABLES...  
CALL BEFORE YOU DIG

CONSTRUCTION/INSPECTION REQUIREMENTS  
WORK MUST CONFORM TO NVE ELECTRIC SERVICE STANDARDS, AVAILABLE AT:  
www.nveenergy.com/business/newconstruction/newconstruction5/energystandards.cfm  
NVE INSPECTOR MUST BE PRESENT TO INSPECT TRENCHING (SCHEDULE AT LEAST 72 HOURS IN ADVANCE) AT EACH OF THE FOLLOWING STAGES:  
1. BOTTOM SAND AND CONDUIT INSTALLED  
2. TOP SAND INSTALLED  
3. BACKFILL INSTALLED  
CONDUIT MUST BE MANDRELLED PRIOR TO RELEASE (COORDINATE WITH INSPECTOR).  
NVE STAND BY CREW IS REQUIRED WHEN WORKING AT AN ENERGIZED VAULT OR TRANSFORMER. CALL STAND BY NUMBER (SEE TITLE BLOCK) TO SCHEDULE.  
NVE ELECTRICAL INSTALLATION WILL NOT BE SCHEDULED UNTIL AFTER THE NVE INSPECTOR HAS COMPLETED THE OFFICIAL RELEASE.  
METERS WILL NOT BE SET UNTIL ALL OF THE FOLLOWING ARE COMPLETED:  
• [INSTRUMENT-RATED ONLY] METERING EQUIPMENT HAS BEEN SUBMITTED TO NVE METERING ENGINEER AND APPROVED. (submit@nve.com)  
• APPLICATION FOR METER SET HAS BEEN SUBMITTED TO NVE'S NEW DEVELOPMENT CENTER. FORM AVAILABLE AT:  
www.nveenergy.com/brochures/only/new\_construction/meter\_set.pdf  
• THE LOCAL BUILDING AUTHORITY HAS INSPECTED AND APPROVED THE METERING EQUIPMENT.  
• METERING EQUIPMENT IS ACCESSIBLE AND CLEARLY IDENTIFIED WITH PERMANENT MARKINGS, ADDRESSES, SUITE NUMBERS, AND STREET SIGNS ARE POSTED IN PERMANENT LOCATIONS (SEE RPI-0).

STRAW WATTLES TO BE PLACED  
DOWNSTREAM OF THE WATER FLOW AT  
GUTTER LINE OF EXCAVATION SITE  
AND IN A MANNER THAT IS COMPLIANT  
WITH CLARK COUNTY CODE.

RTC NOTES:

1) 500.1 0 TO 5 YEARS PAVEMENT RESTORATION LONGITUDINAL CUT
2) 500.2 0 TO 5 YEARS PAVEMENT RESTORATION TRANSVERSE CUT
3) 500.3 OVER 5 YEARS PAVEMENT RESTORATION LONGITUDINAL CUT. GREATER THAN 60' R.O.W
4) 500.4 OVER 5 YRS PAVEMENT RESTORATION LONGITUDINAL CUT. 60' R.O.W OR LESS
5) 500.5 OVER 5 YRS PAVEMENT RESTORATION TRANSVERSE ALL R.O.W WIDTHS
6) 501 TYPICAL UNDERGROUND UTILITY LOCATIONS IN RESIDENTIAL STREETS 60' OR LESS R.O.W.
7) 501.1 TYPICAL UTILITY UNDERGROUND LOCATIONS IN STREETS WITH GREATER THAN 60' R.O.W.
8) 503 METHOD B FOR RIGID AND FLEXIBLE PIPE TRENCH BACKFILL - PAVED AREAS
9) 503.1 METHOD A FOR FLEXIBLE PIPE TRENCH BACKFILL - PAVED AREAS
10) 503.2 METHOD A FOR RIGID PIPE TRENCH BACKFILL - PAVED AREAS
11) BACKFILL IN UNPAVED AREA AS REQUIRED BY LOCAL CODE OR AS APPROVED BY AGENCY.
12) 234 SIDEWALK



NOTES:  
CLV REQUIREMENTS (APPLICABLE WITHIN CITY OF LAS VEGAS LIMITS ONLY):  
IMPROVED AREA (IMP. ST.): (LOCATION OF TRENCH) AREA WILL BE CONSIDERED IMPROVED IF IT MEETS ONE OR MORE OF THE FOLLOWING CRITERIA(S):  
- EXISTING PERMANENT PAVEMENT WITH CURB & GUTTER AND/OR ADJACENT PERMANENT SIDEWALK.  
- WITHIN AN IMPROVED TRAIL AREA.  
- LIMITS OF CONSTRUCTION INSTALLED CONCURRENT WITH A PRIVATE OR PUBLIC UNIMPROVED AREA (UNIMP. ST.): (LOCATION OF TRENCH) ANY OTHER SCENARIO THAT FAILS TO MEET THE IMPROVED AREA CRITERIA(S) WILL BE CONSIDERED AN UNIMPROVED AREA.  
NVE REQUIREMENTS:  
FOR ALL OTHER JURISDICTIONS REFER TO NVE STANDARDS.  
BACKFILL REQUIREMENTS NVE STD. RT-5.  
TRENCH DEPTH REQUIREMENTS NVE STD. RT-5.

TRENCH DETAIL SECTION "A"