



OUTSIDE PLANT CONSTRUCTION
FIBER OPTIC CABLE ROUTE

PROJECT/AFE #: 1708APXV.021

INDUSTRIAL ROAD & EAST DESERT INN RD
CITY OF LAS VEGAS, NEVADA

HUB: LSV GAYLORD - LSV REAL MADRID SC _CLV_PERMIT DESIGNS_062819

CONSTRUCTION DRAWING 6/28/2019

MCI metro ACCESS TRANSMISSION SERVICES CORP.
d/b/a Verizon Access Transmission Services

NOTE: ALL THE ABOVE GROUND UTILITY APPURTENANCES SHALL CONFORM TO THE REQUIREMENTS OF CLV UNIFIED DEVELOPMENT CODE TITLE 19.06 AND 19.08

CITY OF LAS VEGAS
APPROVED FOR CONSTRUCTION

THIS APPROVAL IS FOR WORK IN CLV R/W & EASEMENT ONLY. OBTAINING PERMISSIONS OR EASEMENTS FOR WORK SHOWN ON PRIVATE PROPERTY IS THE RESPONSIBILITY OF THE UTILITY.

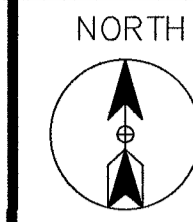
APPROVAL BY: [Signature] 8 19 19
102V9924-FIB DATE

CLV NOTE: PROTECT ALL EXISTING STORM DRAIN SYSTEMS AND THE ASSOCIATED FACILITIES IN PLACE.

L19-01230 7/10/19

INDEX SHEET

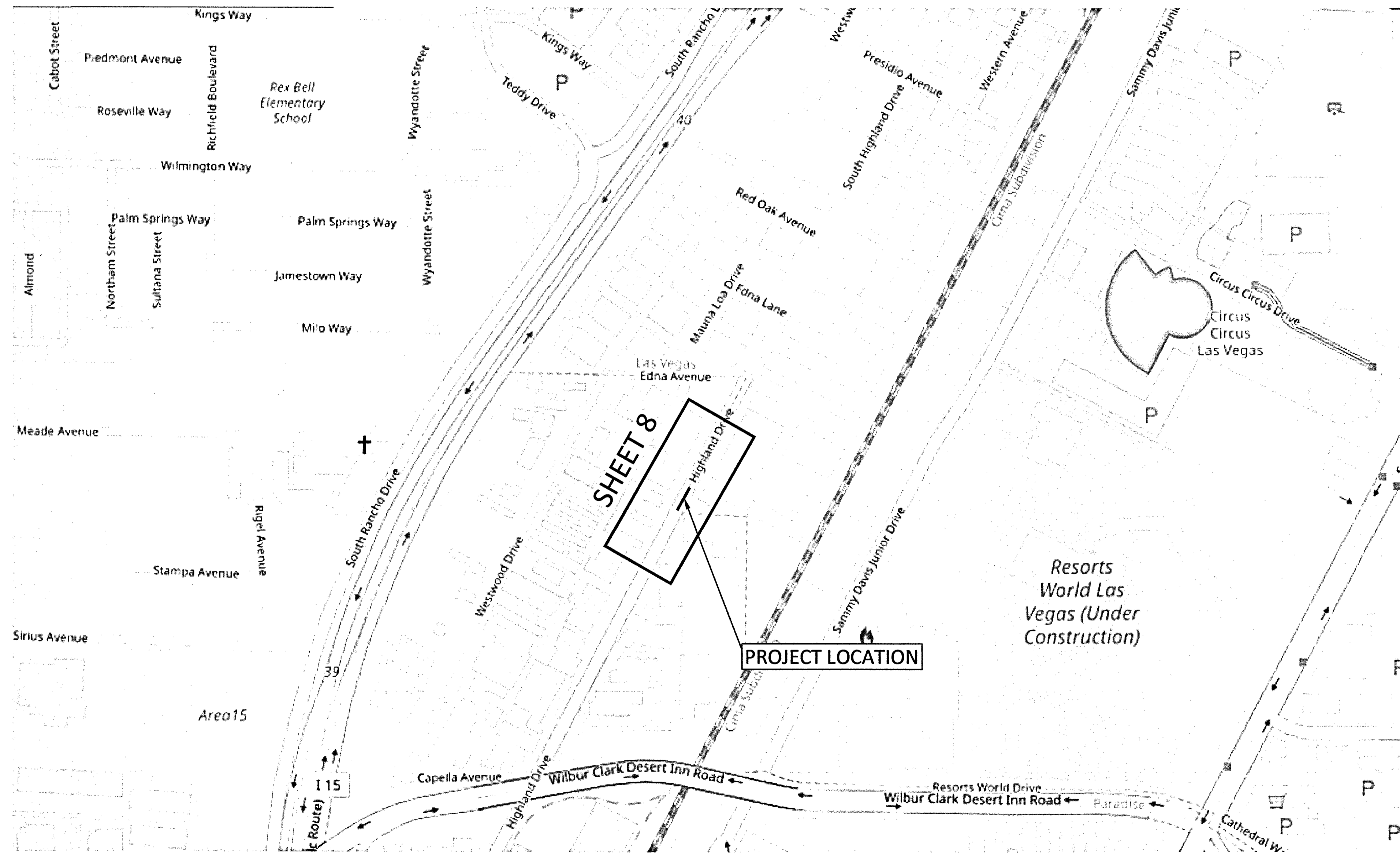
CITY OF LAS VEGAS, NEVADA



LSV REAL MADRID SC_CLV_PERMIT
DESIGNS_062819

CITY OF LAS VEGAS, NEVADA

CLARIFICATION NO. QUANTITY



MCI
COMMUNICATIONS SERVICES, INC.

OUTSIDE PLANT CONSTRUCTION

HUB: LSV GAYLORD - LSV REAL MADRID SC_CLV_PERMIT
DESIGNS_062819

DATE: 6/28/2019

DRAWN BY: ERAMSEY

REVISIONS

DATE	DESCRIPTION	INITIAL

EXCEPT AS MAY BE OTHERWISE PROVIDED BY CONTRACT, THESE DRAWINGS AND SPECIFICATIONS SHALL REMAIN THE PROPERTY OF MCI COMMUNICATIONS SERVICES, INC., BOTH BEING ISSUED IN STRICT CONFIDENCE AND SHALL NOT BE REPRODUCED, COPIED, OR USED FOR ANY PURPOSE WITHOUT SPECIFIC WRITTEN PERMISSION.

SCALE

HORIZONTAL: 1"=30'

VERTICAL: NA

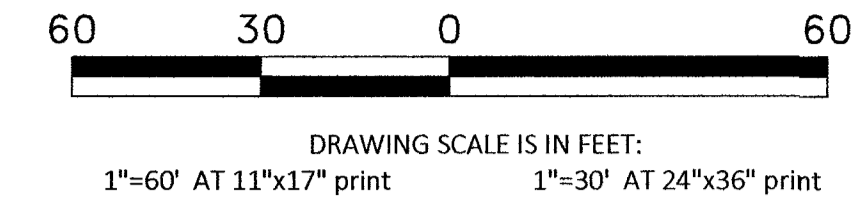
MP TO MP

SHEET 1 OF 9

LSV REAL MADRID SC
FILE: _CLV_PERMIT DESIGNS_062819

CONSTRUCTION DRAWING

CITY OF LAS VEGAS, NEVADA



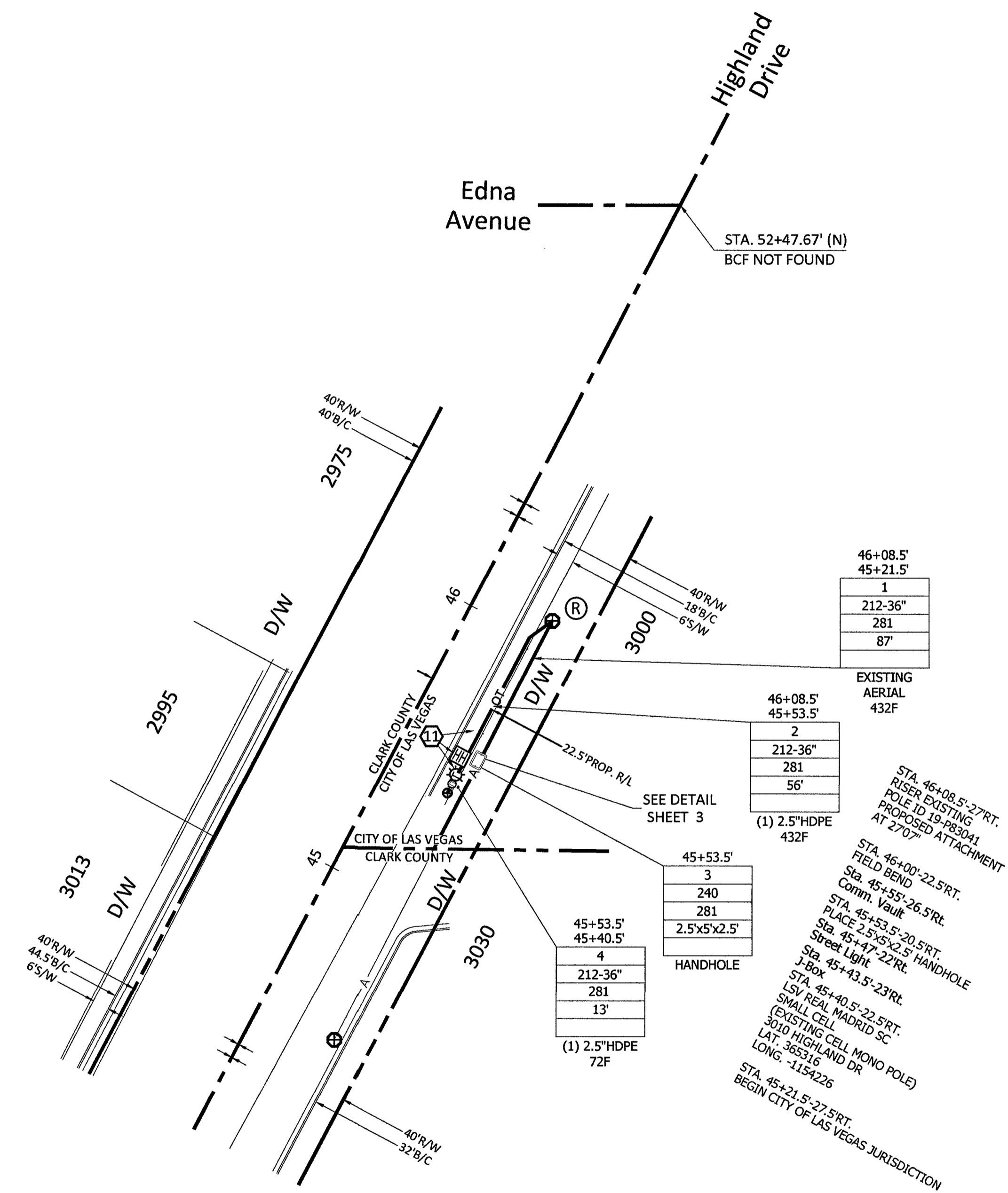
LSV REAL MADRID SC_CLV_PERMIT
DESIGNS_062819

CITY OF LAS VEGAS, NEVADA

CLARIFICATION NO.	QUANTITY
SHEET TOTAL	
2" HDPE CONDUIT:	-
2.5" HDPE CONDUIT:	69'
4" HDPE CONDUIT:	-
2' x 3' x 2' HANDHOLE(S):	-
2.5' x 5' x 2.5' HANDHOLE(S):	1
4' x 4' x 4' MANHOLE(S):	-
MANHOLE(S):	-
AERIAL:	87'
VZW CONDUIT:	-
3RD PARTY CONDUIT:	-
TRENCH:	69'
TOTAL NEW UG FOOTAGE:	69'
TOTAL FOOTAGE:	156'



Know what's below.
Call 811 before you dig.



RTC NOTES:

BACKFILL AND RIGHT OF WAY RESTORATION SHALL CONFORM TO CLARK COUNTY UNIFORM STANDARD DRAWINGS

(1)	500.1	0 TO 5 YEARS PAVEMENT RESTORATION LONGITUDINAL CUT
(2)	500.2	0 TO 5 YEARS PAVEMENT RESTORATION TRAVERSE CUT
(3)	500.3	OVER 5 YEARS PAVEMENT RESTORATION LONGITUDINAL CUT - GREATER THAN 60' R.O.W
(4)	500.4	OVER 5 YEARS PAVEMENT RESTORATION LONGITUDINAL CUT - 60' R.O.W OR LESS
(5)	500.5	OVER 5 YEARS PAVEMENT RESTORATION TRAVERSE ALL R.O.W WIDTHS
(6)	501	TYPICAL UNDERGROUND UTILITY LOCATIONS IN RESIDENTIAL STREETS 60' OR LESS R.O.W
(7)	501.1	TYPICAL UTILITY UNDERGROUND LOCATIONS IN STREETS WITH GREATER THAN 60' R.O.W
(8)	503	METHOD B FOR RIGID AND FLEXIBLE PIPE TRENCH BACKFILL - PAVED AREAS
(9)	503.1	METHOD A FOR FLEXIBLE PIPE TRENCH BACKFILL - PAVED AREAS
(10)	503.2	METHOD A FOR RIGID PIPE TRENCH BACKFILL - PAVED AREAS
(11)	234	SIDEWALK
(12)		BACKFILL IN UNPAVED AREA AS REQUIRED BY LOCAL CODE OR AS APPROVED BY AGENCY.

210	PLACE CONDUIT
212	PLACE HIGH DENSITY POLYETHYLENE (HDPE)
240	PLACE HANDHOLE
250	PLACE MANHOLE
270	REMOVE AND RESTORE ASPHALT
280	REMOVE AND RESTORE CONCRETE
281	REMOVE AND RESTORE SIDEWALK
282	REMOVE AND RESTORE CURBING
283	REMOVE AND RESTORE DIRT/LANDSCAPING
410	PULL CABLE
411	PULL THROUGH DUCT (INNERDUCT)
520	PLACE AERIAL CABLE
630	DIRECTIONAL BORE

DATE: 6/28/2019

DRAWN BY: ERAMSEY

REVISIONS

DATE	DESCRIPTION	INITIAL

EXCEPT AS MAY BE OTHERWISE PROVIDED BY CONTRACT, THESE DRAWINGS AND SPECIFICATIONS SHALL REMAIN THE PROPERTY OF MCI COMMUNICATIONS SERVICES, INC. BOTH BEING ISSUED IN STRICT CONFIDENCE AND SHALL NOT BE REPRODUCED, COPIED, OR USED FOR ANY PURPOSE WITHOUT SPECIFIC WRITTEN PERMISSION.

SCALE

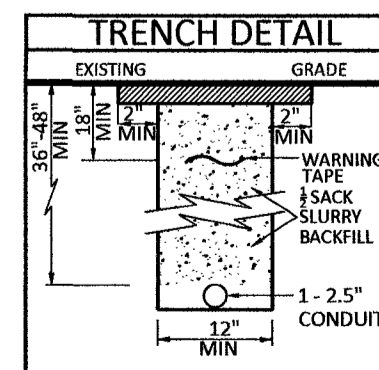
HORIZONTAL: 1"=30'

VERTICAL: NA

MP TO MP

SHEET 8 OF 9

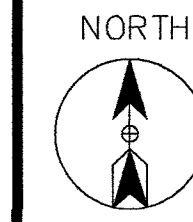
FILE: LSV REAL MADRID SC_CLV_PERMIT DESIGNS_062819



M:\VERSION ONE\FIBER\LAS VEGAS\LSV REAL MADRID SC\CONSTRUCTION DRAWINGS

ROUTE SCHEMATIC

Call at least two full working days before you begin excavation.
811 Know what's below. Call 811 before you dig.



LSV REAL MADRID SC _CLV_PERMIT
DESIGNS_062819

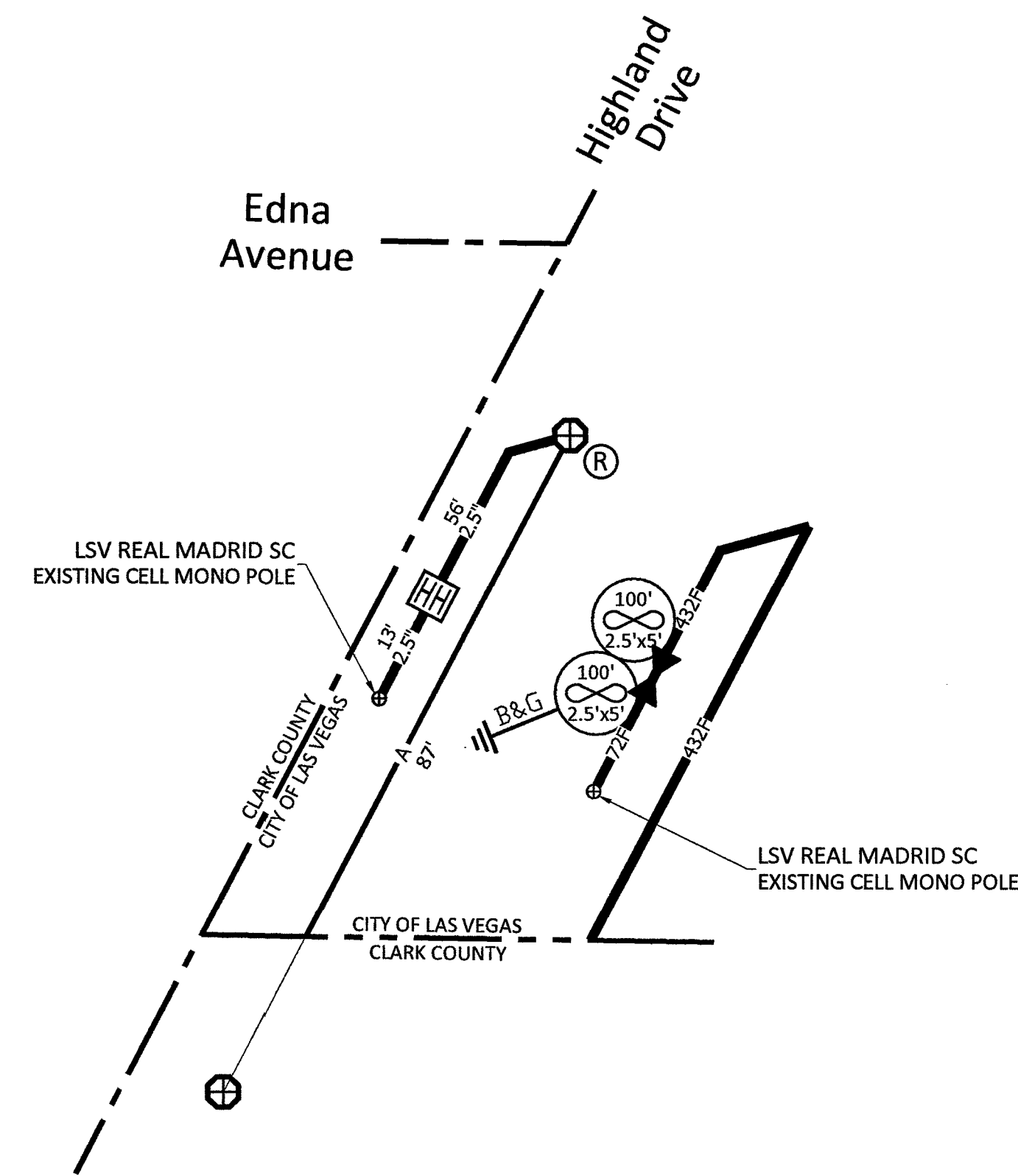
CITY OF LAS VEGAS, NEVADA

CLARIFICATION NO. QUANTITY

FIBER TOTALS

FIBER SIZE/LENGTH: 72F - 113'

FIBER SIZE/LENGTH: 432F - 243'



MCI
COMMUNICATIONS SERVICES, INC.
OUTSIDE PLANT CONSTRUCTION
HUB: LSV GAYLORD - LSV REAL MADRID SC _CLV_PERMIT
DESIGNS_062819

DATE: 6/28/2019

DRAWN BY: ERAMSEY

REVISIONS

DATE	DESCRIPTION	INITIAL

EXCEPT AS MAY BE OTHERWISE PROVIDED BY CONTRACT, THESE DRAWINGS AND SPECIFICATIONS SHALL REMAIN THE PROPERTY OF MCI COMMUNICATIONS SERVICES, INC., BOTH BEING ISSUED IN STRICT CONFIDENCE AND SHALL NOT BE REPRODUCED, COPIED, OR USED FOR ANY PURPOSE WITHOUT SPECIFIC WRITTEN PERMISSION.

SCALE

HORIZONTAL: 1"=30'

VERTICAL: NA

MP _____ TO MP _____

SHEET 9 OF 9

FILE: LSV REAL MADRID SC

_CLV_PERMIT DESIGNS_062819

SITE-SPAN NAME: LSV REAL MADRID SC _CLV_PERMIT
DESIGNS_062819

SITE-SPAN ID: 1708APXX.021

SEGMENT	FIBER COUNT	TRENCH	BORE	DB/OT	3RD PARTY	VZ OWNED	AERIAL	TOTAL
903191	432F	-	-	-	-	-	87'	87'
903170	432F	56'	-	-	-	-	-	56'
903238	72F	13'	-	-	-	-	-	13'

MAVERION ONE FIBER LAS VEGAS LSV GAYLORD LSV REAL MADRID SC CONSTRUCTION DRAWINGS