

# IMPROVEMENT PLANS FOR

# ARCHIE GRANT PARK MODERNIZATION

## APN: 139-26-102-008

### OWNER/DEVELOPER:

SOUTHERN NEVADA REGIONAL HOUSING AUTHORITY  
340 NORTH 11TH STREET, STE. 170  
LAS VEGAS, NV 89101

### BASIS OF BEARINGS:

THE CENTERLINE OF OWENS AVENUE AND THE NORTH LINE OF THE NORTHWEST QUARTER (NW 1/4) OF SECTION 26, TOWNSHIP 20 SOUTH, RANGE 81 EAST, M.D.M., CITY OF LAS VEGAS, CLARK COUNTY, NEVADA, HAVING A BEARING OF N 89° 47' 09" E, ALSO BEING N 89° 38' 29" E AS SHOWN ON MAP THEREOF ON FILE IN BOOK 120 OF PARCEL MAPS, PAGE 89, OFFICIAL RECORDS, CLARK COUNTY NEVADA.

### BENCHMARK

CITY OF LAS VEGAS BENCHMARK "0LVD1 26N6A", RIVET & PLATE IN TOP OF CURB AT SE CORNER OF BRUCE & TODD

ELEVATION: 1865.7 (US SURVEY FEET)  
588.665 (METERS)

BASED ON NORTH AMERICAN VERTICAL DATUM OF 1988 (NAVD 88).

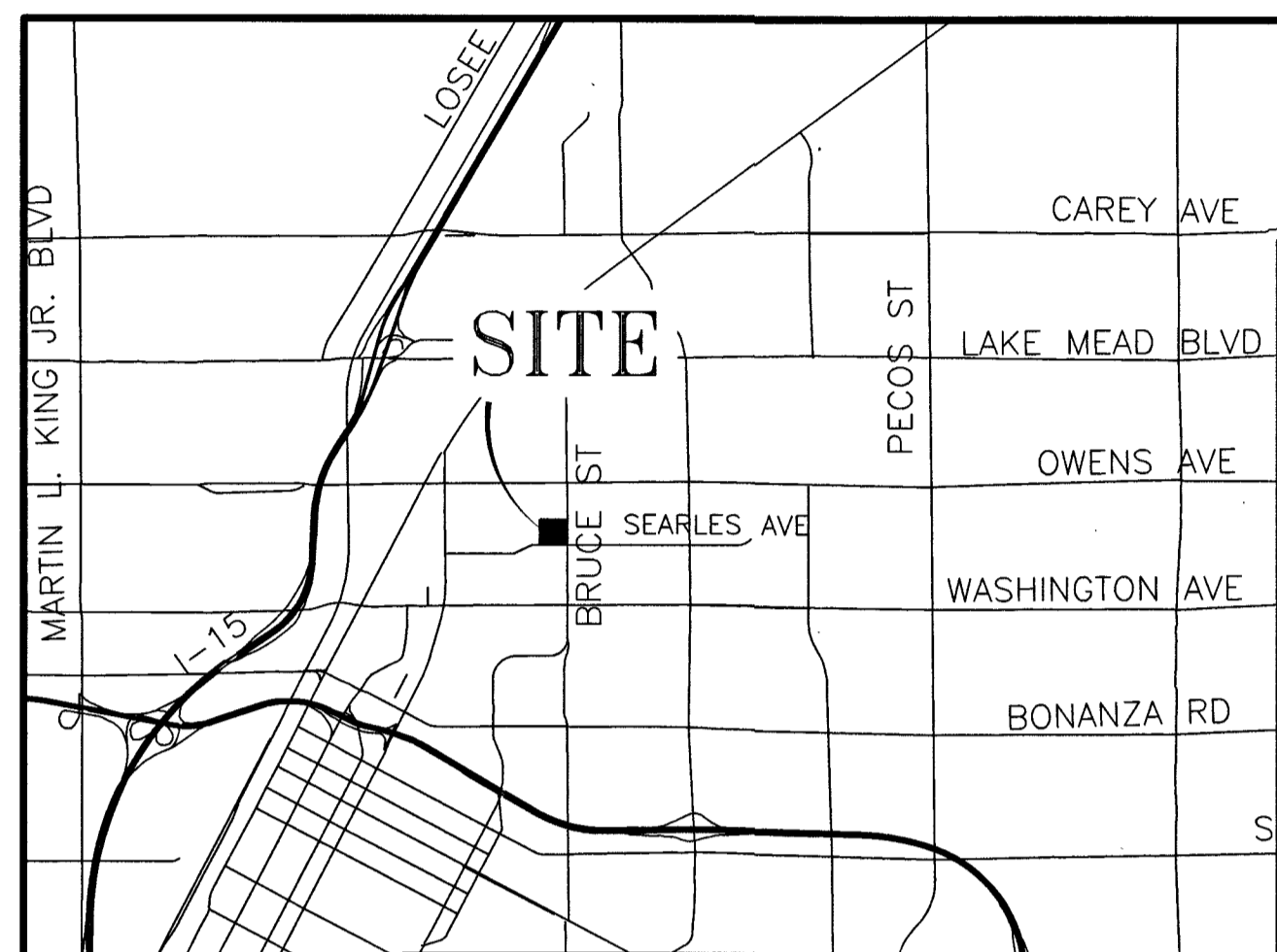
### ENGINEERS STATEMENT:

THESE PLANS, SHEETS 1 THROUGH 5, HAVE BEEN PREPARED IN ACCORDANCE WITH ACCEPTED ENGINEERING PROCEDURES AND GUIDELINES, AND ARE IN SUBSTANTIAL COMPLIANCE WITH APPLICABLE STATUTES, CITY ORDINANCES, STANDARDS, TENTATIVE MAP CONDITIONS, AND CITY COUNCIL CONDITIONS. IN THE EVENT OF A CONFLICT BETWEEN ANY PORTION OF THESE PLANS AND CLARK COUNTY STANDARDS, THE STANDARDS SHALL APPLY.

### SHEET INDEX

SHT No.	DWG ID	DRAWING DESCRIPTION
1	T-1	TITLE SHEET
2	N-1	GENERAL NOTES AND SPECIFICATIONS
3	G-1	GRADING PLAN
4	U-1	UTILITY PLAN - FIRE SPRINKLER
5	U-2	UTILITY PLAN - SANITARY SEWER
6	U-3	UTILITY PLAN - UTILITY PROFILES

D-1 TRASH ENCLOSURE GRADING DETAILS



**VICINITY MAP**

### LEGEND

	PROPERTY BOUNDARY
	RIGHT-OF-WAY
	PROPERTY LINE
	CENTER LINE
	EASEMENT
	EXST "L" TYPE CURB
	EXST "A" TYPE CURB
	EXST MAJOR CONTOUR LINE
	EXST MINOR CONTOUR LINE
	EXST SCREEN WALL
	EXST EDGE OF PAVEMENT
	EXST EDGE OF SIDEWALK
	EXST UNDERGROUND POWER
	EXST FIBER OPTICS
	EXST GAS
	EXST WATER LINE
	EXST SEWER LINE
	EXST STORM DRAIN
	METER
	FIRE HYDRANT VALVE
	SWR MANHOLE
	SEWER CLEANOUT
	STORM MANHOLE
	TELEPHONE BOX
	TELEPHONE MANHOLE
	FIBER BOX
	CABLE TV BOX
	ELECTRICAL MANHOLE
	STREET LIGHT BOX
	POWER POLE
	SERVICE POLE
	GUY WIRE
	TRANSFORMER
	STREET LIGHT CABINET
	STREET LIGHT
	TRAFFIC SIGNAL BOX
	AREA LIGHT
	"L" TYPE CURB
	"A" TYPE CURB
	SIDEWALK
	SAWCUT
	SIDEWALK REMOVAL
	PAVEMENT PATCH

### ABBREVIATIONS

AB	AGGREGATE BASE
AC	ASPHALT CONCRETE PAVEMENT
AVRV	AIR VACUUM RELIEF VALVE
BC	BEGIN CURVE
BM	BENCH MARK
BVC	BEGIN VERTICAL CURVE
BOW	BACK OF WALK
BW	BOTTOM OF WALL
CB	CATCH BASIN
CL	CENTER LINE
CONST	CONSTRUCT
CR	CURB RETURN
CT	COURT
DIP	DUCTILE IRON PIPE
SDMH	STORM DRAIN MANHOLE
DR	DRIVE
E	EAST
EC	END CURVE
ELEV	ELEVATION
EP	EDGE OF PAVEMENT
EX	EXISTING
EXIST	EXISTING
EVC	END OF VERTICAL CURVE
FES	FLARED END SECTION
FG	FINISH GRADE ELEVATION
FH	FIRE HYDRANT
FL	FLOW LINE
FLG	FLANGE
FM	FORCE MAIN
FVA	FLUSH VALVE ASSEMBLY
GR	GRATE
GB	GRADE BREAK
GV	GATE VALVE
HP	HIGH POINT
HDPE	HIGH DENSITY POLYETHYLENE
INV	INVERT
JP	JOINT POLE
L	LEFT
LF	LINEAR FEET
MAX	MAXIMUM
MH	MANHOLE
MIN	MINIMUM
MON	MONUMENT
N	NORTH
PCC	POINT OF COMPOUND CURVE
PI	POINT OF INTERSECTION
PIVC	POINT OF INTERSECTION VERTICAL CURVE
PL	PROPERTY LINE
PP	POWER POLE
R, R=	RADIUS
RCB	REINFORCED CONCRETE BOX
RCP	REINFORCED CONCRETE PIPE
PRC	POINT OF REVERSE CURVATURE
PVC	POINT OF VERTICAL CURVE
PVI	POINT OF VERTICAL INTERSECTION
PVT	POINT OF VERTICAL TANGENT
RCW	RECLAIMED WATER
R	RIGHT
RW	RIGHT OF WAY
S	SOUTH
SE	SANITARY SEWER EASEMENT
SHT	SHEET
STA	STATION
SS	SANITARY SEWER SERVICE
SSMH	SANITARY SEWER MANHOLE
SW	SIDEWALK
T	TANGENT
TBC,TC	TOP BACK OF CURB
TYP	TYPICAL
TP	TELEPHONE POLE
TW	TOP OF WALL
W	WEST
WM	WATER MAIN

### QUANTITY ESTIMATE

DESCRIPTION	PRIVATE	PUBLIC
6" RPDA		2 EA
8" PVC WL	1,562 LF	70 LF
6" PVC WL	1,862 LF	
8" GATE VALVE	13 EA	
12" X8" TAPPING SLEEVE AND VALVE		1 EA
10" X8" TAPPING SLEEVE AND VALVE		1 EA
4" RPPA		2 EA
FIRE HYDRANT ASSEMBLY	6 EA	
48" SANITARY SEWER MANHOLE	3 EA	
8" PVC SDR35 SANITARY SEWER	234 LF	
8" PVC C900 SANITARY SEWER	234 LF	
6" PVC SDR35 SANITARY SEWER	408 LF	
6" PVC C900 SANITARY SEWER	48 LF	
4" PVC SDR35 SANITARY SEWER	266 LF	
4" PVC C900 SANITARY SEWER	429 LF	
SANITARY SEWER CLEAN OUT	37 LF	
SIDEWALK RAMP	4 EA	

NOTE: THESE QUANTITIES ARE FOR PLAN CHECKING PURPOSES ONLY AND SHOULD NOT BE USED BY CONTRACTORS TO DETERMINE FINAL QUANTITIES.

### APPROVALS:

APPROVAL OF THESE PLANS BY THE CITY ENGINEER IS LIMITED TO THOSE IMPROVEMENTS CONSTRUCTED IN THE DEDICATION OF RIGHT-OF-WAY, AND/OR CONSTRUCTION OF ANY IMPROVEMENTS THAT DEVIATE FROM ADOPTED STANDARDS AND/OR SPECIFICATIONS EXCEPT THOSE SPECIALLY LISTED UNDER DEVIATIONS FROM STANDARDS. THE ENGINEER SHALL RESOLVE ANY DEVIATION OTHER THAN THOSE LISTED IN DEVIATIONS FROM STANDARDS IN FAVOR OF THE UNIFORM STANDARD DRAWINGS AND SPECIFICATIONS CLARK COUNTY AREA NEVADA.

*Allen Pavelka* 9-30-19  
ALLEN PAVELKA P.E. #9029  
CITY ENGINEER

THIS PLAN MEETS THE APPLICABLE STANDARDS OF THE PLANNING DEPARTMENT.

*Robert Amosfield* 9/30/19  
CITY OF LAS VEGAS PLANNING DEPARTMENT  
BUILDING AND SAFETY

APPROVED FOR CONSTRUCTION

*James Thacker*  
LAS VEGAS VALLEY WATER DISTRICT ENGINEERING SERVICES  
PROJECT NO.: 138454 FIRST APPROVED DATE: 9-9-19

LVWD APPROVED FIRE FLOW:  
TOTAL 1500 GPM/ONSITE 1500 GPM  
SHEETS T-1, N-1, U-1, U-2, U-3

*Robert G. Gann* 8/2/19  
LAS VEGAS FIRE & RESCUE

NV ENERGY ACKNOWLEDGES THAT WE HAVE RECEIVED YOUR PLANS AND WILL PROVIDE SERVICE TO ALL ELECTRICAL NEEDS ASSOCIATED WITH THIS PROJECT. NV ENERGY RESERVES THE RIGHT TO ADDRESS ANY EXISTING OR FUTURE CONFLICTS ONCE THE FINAL DESIGN IS COMPLETED. THE NEW SERVICE AND THE RESOLUTION OF ANY CONFLICTS WILL BE ACCOMPLISHED PURSUANT TO THE NEVADA PUBLIC UTILITY COMMISSION'S RULES AND REGULATIONS.

*Amy Courtney* 9/18/19  
NV ENERGY

THE AFFIXED CENTURYLINK CORPORATION APPROVAL DOES NOT ASSUME OR GUARANTEE LIABILITY FOR KNOWN OR UNKNOWN CONFLICTS WITH EXISTING OR PROPOSED IMPROVEMENTS. RESOLUTION OF ANY CONFLICT WILL BE ACCOMPLISHED PURSUANT TO LOCAL ORDINANCES, NEVADA REVISED STATUTES AND/OR PUBLIC UTILITY COMMISSION RULES AND REGULATIONS.

*James Duffie* 9/18/19  
CENTRAL TELEPHONE CO. C/O A CENTURY LINK

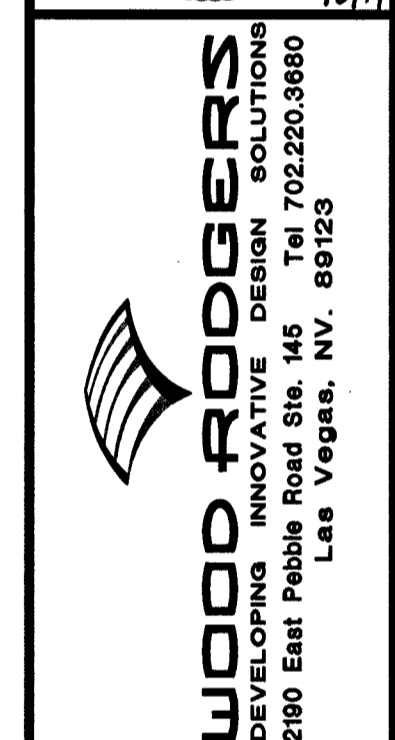
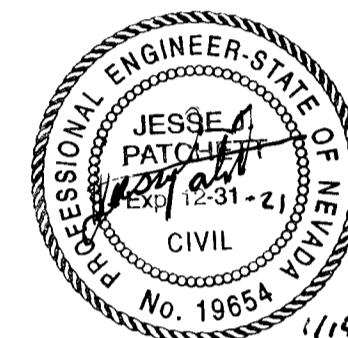
*Celia Lopez* 9/18/19  
COX COMMUNICATIONS, LAS VEGAS, NV

*Jacob Sakaguchi* 09/20/19  
SOUTHWEST GAS CORPORATION

ALL LAND SURFACE AREA DISTURBANCES OVER 1 ACRE REQUIRE A STORMWATER DISCHARGE PERMIT ISSUED BY THE NEVADA DIVISION OF ENVIRONMENTAL PROTECTION (NDEP). A PHASED CONSTRUCTION UNIT IN A CONTIGUOUS SUBDIVISION IS CONSIDERED UNDER CONSTRUCTION UNTIL ALL STRIPPED SURFACE AREAS HAVE BEEN COVERED BY PAVING, BUILDING CONSTRUCTION OR PLANTING. A STORMWATER DISCHARGE PERMIT APPLICATION AND ASSOCIATED INFORMATION MAY BE DOWNLOADED FROM THE WEB SITE:  
[HTTPS://NDEP.NV.GOV/WATER/WATER-POLLUTION-CONTROL/PERMITTING/STORMWATER-DISCHARGE-PERMITS](https://ndep.nv.gov/water/water-pollution-control/permitting/stormwater-discharge-permits). PROJECTS THAT DISTURB MORE THAN ONE ACRE OF LAND MUST SUBMIT TO NDEP A "NOTICE OF INTENT" FOR INCLUSION UNDER STORMWATER PERMIT NO. NVRI00000 ALONG WITH THE APPROPRIATE FILLING FEE.

NO.	DESCRIPTION	ENGR. INT.	DATE
1	11/14/19		

DATE: JULY 23, 2019	SCALE: HINTS	V.N.T.S.
DRAWN BY: SDC	DESIGNED BY: JMG	CHECKED BY: JJP



WOOD RODGERS  
 DEVELOPING INNOVATIVE DESIGN SOLUTIONS  
 2100 East Pebble Road Ste. 148  
 Las Vegas, NV 89123  
 Tel 702.220.3680

IMPROVEMENT PLANS FOR  
**ARCHIE GRANT PARK MODERNIZATION**  
 TITLE SHEET  
 PROJECT NO. 1982  
 SHT 1 OF 8  
 DRAWING T-1  
 L19-00591

650.127

CLV GENERAL NOTES

- 1. ALL CONSTRUCTION AND MATERIALS SHALL BE IN ACCORDANCE WITH THE "UNIFORM STANDARD SPECIFICATIONS FOR PUBLIC WORKS CONSTRUCTION OFFSITE IMPROVEMENTS, CLARK COUNTY AREA NEVADA", LATEST ISSUE; THE "UNIFORM STANDARD DRAWINGS FOR PUBLIC WORKS CONSTRUCTION, CLARK COUNTY AREA NEVADA", LATEST REVISED EDITION; THE "SUMMERLIN IMPROVEMENT STANDARDS" FOR WORK IN THE SUMMERLIN AREA; AND OTHER APPLICABLE APPROVED STANDARDS ISSUED BY THE CONTROLLING AGENCY; THE UNIFORM BUILDING CODE; AND ALL LOCAL CITY CODES AND ORDINANCES APPLICABLE, EXCEPT AS NOTED ON THIS SHEET AS "DEVIATIONS FROM STANDARDS".

WALL NOTES:

- 16. ALL WALLS, NEW OR EXISTING, ARE ONLY SHOWN ON CIVIL PLANS FOR THE PURPOSE OF REVIEWING GRADING RELATIONSHIPS; FLOOD CONTROL AND SIGHT DISTANCE AT INTERSECTIONS. NEW WALLS REQUIRE A SEPARATE PERMIT AND INSPECTION BY THE BUILDING DEPARTMENT.

CLV SEWER NOTES

- 1. ALL CONSTRUCTION AND MATERIALS SHALL BE IN ACCORDANCE WITH THE LATEST EDITION OF THE DESIGN AND CONSTRUCTION STANDARDS FOR WASTEWATER COLLECTION SYSTEMS AND THE UNIFORM STANDARD SPECIFICATIONS FOR PUBLIC WORKS' CONSTRUCTION OFF-SITE IMPROVEMENTS, CLARK COUNTY AREA, NEVADA, AS AMENDED. IT WILL BE THE RESPONSIBILITY OF THE CONTRACTOR TO BE AWARE OF THE CONTENTS OF THE ABOVE SPECIFICATIONS.

LAS VEGAS FIRE AND RESCUE GENERAL NOTES FOR HYDRANTS AND ACCESS

- 1. ALL WORK SHALL BE DONE IN STRICT ACCORDANCE WITH THE LAS VEGAS FIRE AND RESCUE ADOPTED FIRE CODE ORDINANCE #6631 FOR HYDRANT SPECIFICATIONS AND HYDRANT INSTALLATION SPECIFICATION.

LAS VEGAS VALLEY WATER DISTRICT (LVVWD) STANDARD NOTES

- 1. NO WORK SHALL BEGIN UNTIL THE WATER PLANS HAVE BEEN APPROVED FOR CONSTRUCTION BY THE LVVWD. FOLLOWING WATER PLAN APPROVAL, NOTICE SHALL BE GIVEN TO THE LVVWD COMMUNICATION SUPPORT CENTER (258-7171) TWO (2) WORKING DAYS PRIOR TO THE START OF CONSTRUCTION. FOR FUTURE INSPECTIONS, NOTICE MUST BE GIVEN BY 2:00 PM THE BUSINESS DAY PRIOR TO THE REQUESTED LVVWD INSPECTION. WHEN REQUESTING INSPECTIONS, PLEASE REFER TO THE PROJECT # IDENTIFIED ABOVE.

CITY OF LAS VEGAS GRADING NOTES

- 1. IN THE EVENT THAT ANY UNFORESEEN CONDITIONS NOT COVERED BY THESE NOTES ARE ENCOUNTERED DURING GRADING OPERATIONS, THE OWNER/ENGINEER SHALL BE IMMEDIATELY NOTIFIED FOR DIRECTION.

SOUTHWEST GAS CORPORATION GENERAL NOTES

- 1. IN THE EVENT OF NATURAL GAS EMERGENCIES CALL 911 AND 1-877-860-8020

CLV TRAFFIC NOTES

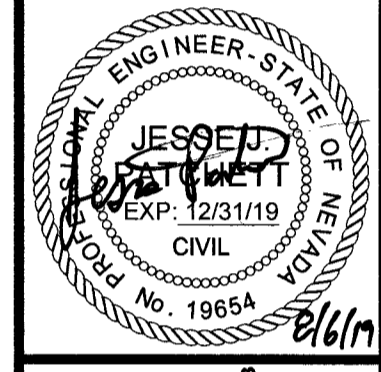
- 1. ALL CONSTRUCTION SIGNING, BARRICADING, AND TRAFFIC DELINEATION SHALL CONFORM TO THE "MANUAL ON UNIFORM TRAFFIC CONTROL DEVICES", LATEST EDITION.

DEVIATION FROM STANDARDS

THERE ARE NO DEVIATIONS FROM APPLICABLE CLARK COUNTY STANDARDS, UNLESS STATED IN THE SPECIFICATIONS.

Table with columns: DATE, ENGR, DATE, NO., DESCRIPTION

DATE: JULY 23, 2019
SCALE: HINTS V. NITS
DRAWN BY: SDC
DESIGNED BY: JGM
CHECKED BY: JLP



WOOD RODGERS
DEVELOPING INNOVATIVE DESIGN SOLUTIONS
2100 East Pebbly Road Ste. 145
Las Vegas, NV 89123
Tel 702.220.3680

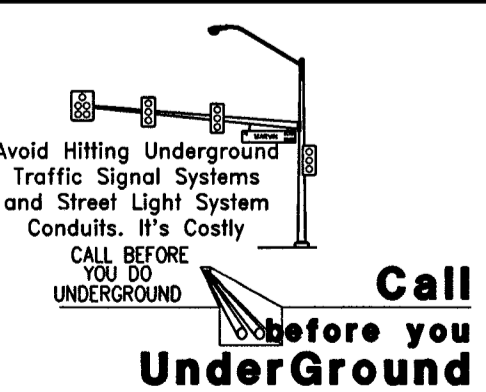
IMPROVEMENT PLANS FOR
ARCHIE GRANT
PARK MODERNIZATION
GENERAL NOTES AND SPECIFICATIONS

APPROVALS:

Las Vegas Valley Water District Engineering Services
PROJECT NO.: 136454 FIRST APPROVED DATE: 9-9-19
LVVWD APPROVED FIRE FLOW:
TOTAL 1500 GPM/ONSITE 1500 GPM

DISCLAIMER NOTE:

UTILITY LOCATIONS SHOWN HEREON ARE APPROXIMATE ONLY. IT SHALL BE THE CONTRACTORS RESPONSIBILITY TO DETERMINE THE EXACT HORIZONTAL AND VERTICAL LOCATION OF ALL EXISTING UNDERGROUND OR OVERHEAD UTILITIES PRIOR TO COMMENCING CONSTRUCTION. NO REPRESENTATION IS MADE THAT ALL EXISTING UTILITIES ARE SHOWN HEREON. THE ENGINEER ASSUMES NO RESPONSIBILITY FOR UTILITIES NOT SHOWN OR UTILITIES NOT SHOWN IN THEIR PROPER LOCATION OR DISCREPANCIES.



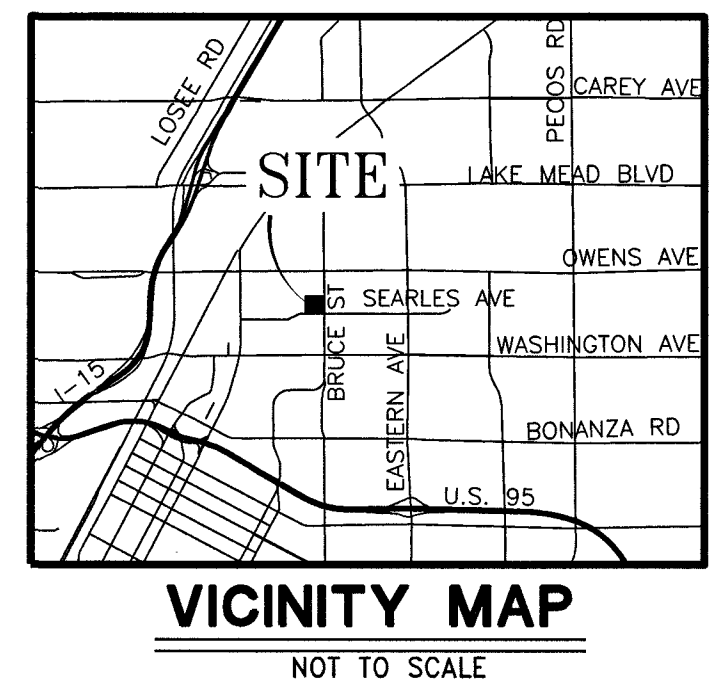
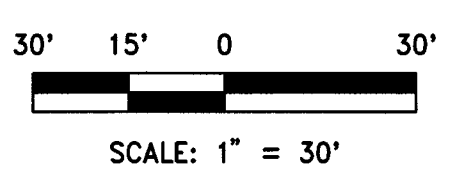
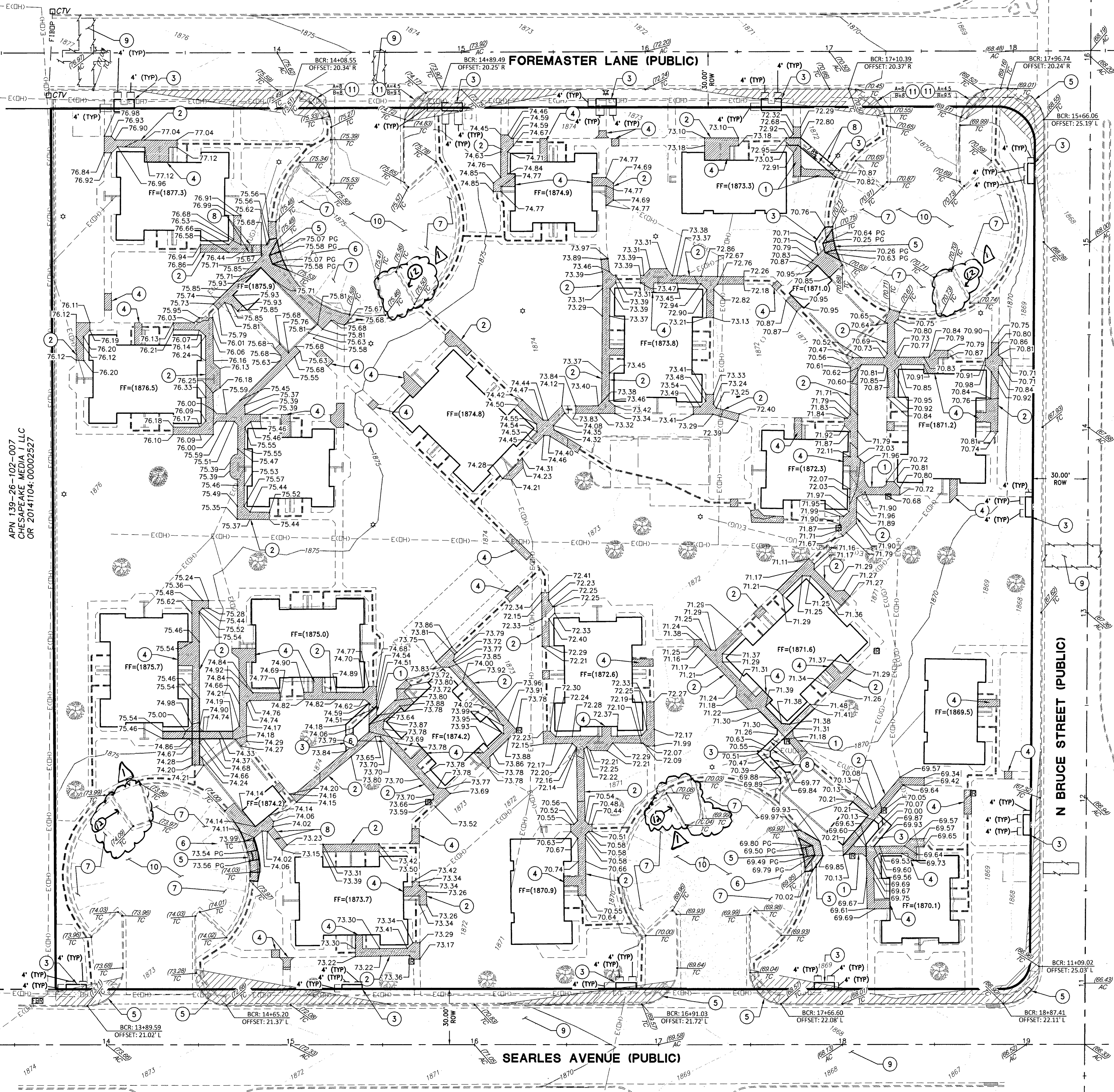
Call before you Overhead
1-702-227-2929

Call before you Dig
1-800-227-2800

PROJECT NO. 1982
SHT 2 OF 6
DRAWING N-1
L19-00591

APN 139-26-101-003  
CITY OF LAS VEGAS  
OR 69:00402162

APN 139-26-201-005  
SOUTHERN NEVADA HOUSING AUTHORITY  
OR 20100205:00000460



**CONSTRUCTION NOTES**

- 1 REMOVE EXISTING SIDEWALK
- 2 REPLACE EXISTING NON-ACCESSIBLE SIDEWALK PER CCAUSD #234, W/ NEW GRADES, SEE PLAN
- 3 SIDEWALK PER CCAUSD #234
- 4 REMOVE/REPLACE EXISTING SIDEWALK FOR UTILITY CROSSING
- 5 CONSTRUCT ACCESSIBLE RAMP W/ TRUNCATED DOMES PER CCAUSD #235
- 6 EXISTING PARKING SPACE
- 7 RE-STRIPE EXISTING PARKING LOT ALONG EXISTING LINES
- 8 INSTALL HANDRAILS ADJACENT TO ACCESSIBLE PATH, SEE ARCHITECTURAL PLANS FOR DETAILS
- 9 PAVEMENT PATCH PER CCAUSD #500.5 & #503
- 10 REMOVE AND REPLACE PAVEMENT, 2" AC PAVEMENT OVER EXISTING COMPACTED BASE
- 11 REMOVE EXISTING SIDEWALK AND CONSTRUCT SIDEWALK RAMP PER CCAUSD #235 CASE #1
- 12 REFER TO SHEET D-1 FOR TRASH ENCLOSURE GRADING DETAILS

**LEGEND**

EXISTING	PROPOSED	DESCRIPTION
---	---	PROPERTY BOUNDARY
---	---	RIGHT-OF-WAY
---	---	PROPERTY LINE
---	---	CENTER LINE
---	---	EASEMENT
---	---	EXIST "L" TYPE CURB
---	---	EXIST "A" TYPE CURB
---	---	EXIST MAJOR CONTOUR LINE
---	---	EXIST MINOR CONTOUR LINE
---	---	EXIST SCREEN WALL
---	---	EXIST EDGE OF PAVEMENT
---	---	EXIST EDGE OF SIDEWALK
---	---	EXIST UNDERGROUND POWER
---	---	EXIST FIBER OPTICS
---	---	EXIST GAS
---	---	EXIST WATER LINE
---	---	EXIST SEWER LINE
---	---	EXIST STORM DRAIN
---	---	METER
---	---	FIRE HYDRANT
---	---	VALVE
---	---	SWR MANHOLE
---	---	SEWER CLEANOUT
---	---	STORM MANHOLE
---	---	TELEPHONE BOX
---	---	TELEPHONE MANHOLE
---	---	FIBER BOX
---	---	CABLE TV BOX
---	---	ELECTRICAL MANHOLE
---	---	STREET LIGHT BOX
---	---	POWER POLE
---	---	SERVICE POLE
---	---	GUY WIRE
---	---	TRANSFORMER
---	---	STREET LIGHT CABINET
---	---	STREET LIGHT
---	---	TRAFFIC SIGNAL BOX
---	---	AREA LIGHT
---	---	"L" TYPE CURB
---	---	"A" TYPE CURB
---	---	SIDEWALK
---	---	SAWCUT
---	---	SIDEWALK REMOVAL
---	---	PAVEMENT PATCH

**LEGEND**

EXISTING	PROPOSED	DESCRIPTION
---	---	TOP BACK CURB
---	---	FINISH GRADE
---	---	EDGE OF PAVEMENT
---	---	EDGE OF PAVEMENT
---	---	FLOW LINE
---	---	FLOW LINE
---	---	ASPHALT CONCRETE
---	---	ASPHALT CONCRETE
---	---	TOP OF RET. WALL
---	---	TOP OF RET. WALL
---	---	TOP OF FOOTER
---	---	TOP OF FOOTER
---	---	HIGH POINT
---	---	HIGH POINT
---	---	GRADE BREAK
---	---	GRADE BREAK

**BENCHMARK**

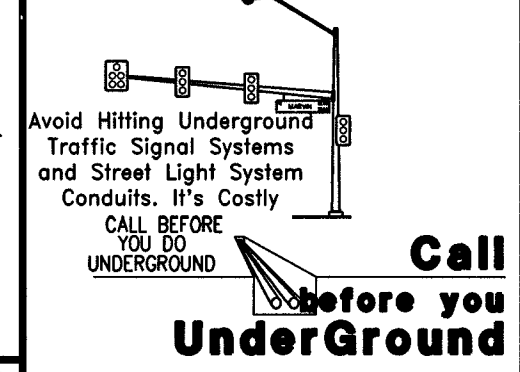
CITY OF LAS VEGAS BENCHMARK "OLV01 26NSA" RIVET & PLATE IN TOP OF CURB AT SE CORNER OF BRUCE & TODD  
ELEVATION: 1865.7 (US SURVEY FEET)  
568.665 (METERS)

**BASIS OF BEARINGS**

THE CENTERLINE OF OWENS AVENUE AND THE NORTH LINE OF THE NORTHWEST QUARTER (NW 1/4) OF SECTION 26, TOWNSHIP 20 SOUTH, RANGE 81 EAST, M.D.M. CITY OF LAS VEGAS, CLARK COUNTY, NEVADA, HAVING A BEARING OF N 89° 47' 09" E, ALSO BEING N 89° 38' 29" E AS SHOWN ON MAP THEREOF ON FILE IN BOOK 120 OF PARCEL MAPS, PAGE 89, OFFICIAL RECORDS, CLARK COUNTY NEVADA.

**DISCLAIMER NOTE:**

UTILITY LOCATIONS SHOWN HEREON ARE APPROXIMATE ONLY. IT SHALL BE THE CONTRACTOR'S RESPONSIBILITY TO DETERMINE THE EXACT HORIZONTAL AND VERTICAL LOCATION OF ALL EXISTING UNDERGROUND OR OVERHEAD UTILITIES PRIOR TO COMMENCING CONSTRUCTION. NO REPRESENTATION IS MADE THAT ALL EXISTING UTILITIES ARE SHOWN HEREON. THE ENGINEER ASSUMES NO RESPONSIBILITY FOR UTILITIES NOT SHOWN OR UTILITIES NOT SHOWN IN THEIR PROPER CONTRACTOR TO NOTIFY ENGINEER OF LOCATION. ANY CHANGES OR DISCREPANCIES.



**Call Before you Overhead**  
1-702-227-2829

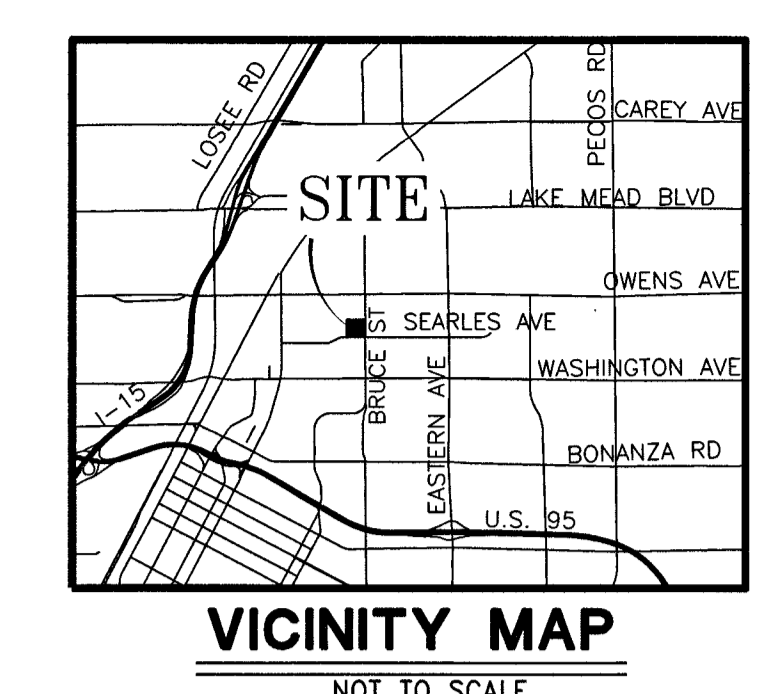
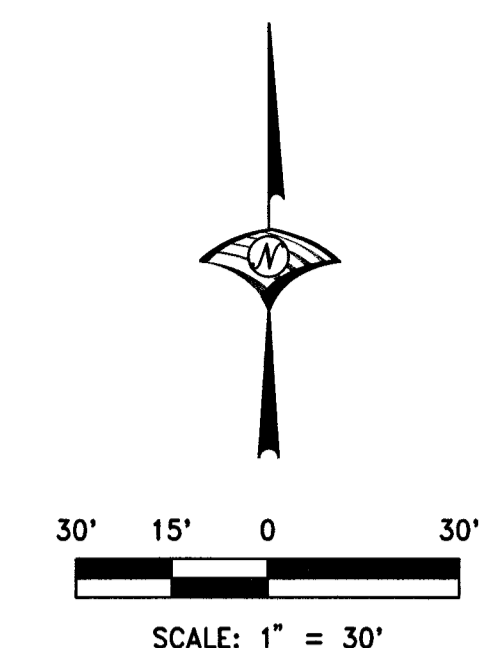
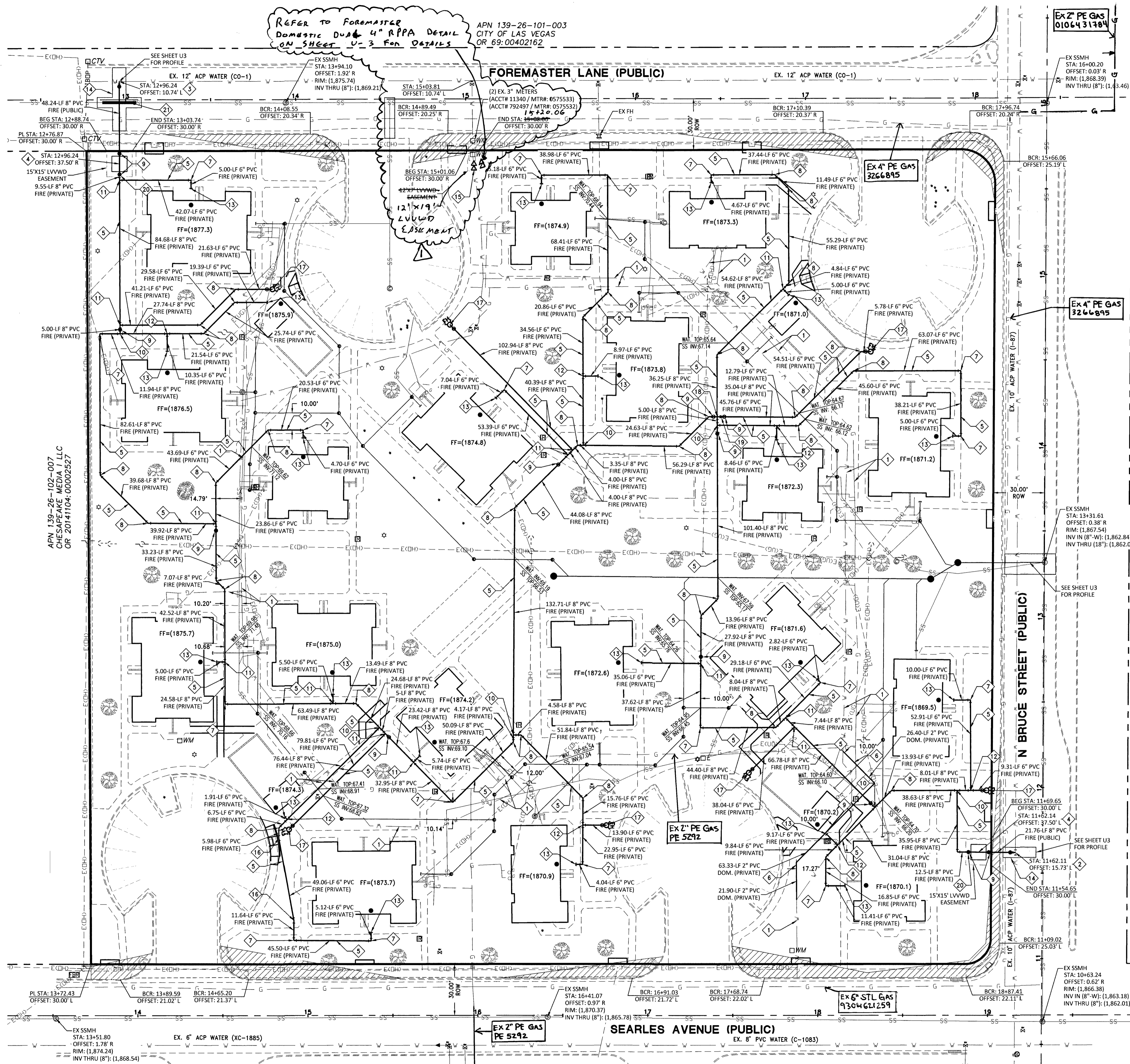
**Call Before you Dig**  
1-702-465-7511  
CLARK COUNTY TRAFFIC OPERATIONS  
AND  
1-702-422-5300  
LAS VEGAS AREA COMPUTERIZED TRAFFIC SYSTEM  
650.127

NO.	DESCRIPTION	DATE	ENGR. INIT.

WOOD RODGERS  
INNOVATIVE DESIGN SOLUTIONS  
2800 East Pabian Road Ste. 145  
Las Vegas, NV 89123  
Tel 702.220.3680

**ARCHIE GRANT PARK MODERNIZATION GRADING PLAN**

PROJECT NO. 1982  
SHT 3 OF 8  
DRAWING G-1  
L19-00591



**WATER CONSTRUCTION NOTES**

- UNDERGROUND UTILITIES LOCATIONS SHOWN ON THE DRAWINGS LOCATION SERVICE AND SITE SURVEY. THE ENGINEER ASSUMES NO RESPONSIBILITY FOR UTILITIES NOT SHOWN OR IN THE LOCATION SHOWN ON THE DRAWINGS.
- 8"x10" TAPPING SLEEVE WITH 8" TAPPING VALVE PER UDACS PLATE 34 & 39 (UDACS 2.24.01 A)
- 8"x12" TAPPING SLEEVE WITH 8" TAPPING VALVE PER UDACS PLATE 34 & 39 (UDACS 2.24.01 B (ACP PIPE))
- 8" RPDA PER UDACS PLATE 56
- PVC WATERLINE (FIRE), SIZE PER PLAN, TRENCH PER UDACS PLATE 17 & 19
- 2" PVC DOMESTIC PVC WATERLINE
- 90° BEND, SIZE PER PLAN, WITH THRUST BLOCK PER UDACS PLATE 31
- 45° BEND, SIZE PER PLAN, WITH THRUST BLOCK PER UDACS PLATE 31
- GATE VALVE, SIZE PER PLAN, WITH THRUST BLOCK PER UDACS PLATE 30 & 39
- 8"x8"x8" TEE WITH THRUST BLOCK PER UDACS PLATE 31
- 8"x6"x8" TEE WITH THRUST BLOCK PER UDACS PLATE 31
- 8"x6"x6" TEE WITH THRUST BLOCK PER UDACS PLATE 31
- SEE M.E.P. PLANS FOR CONTINUATION
- PAYEMENT PATCH PER CCAUSD #500.5 & #503
- 4" RPPA PER UDACS PLATE 56
- 11.25" BEND, SIZE PER PLAN, WITH THRUST BLOCK PER UDACS PLATE 31
- FIRE HYDRANT ASSEMBLY COMPLETE WITH VALVE PER UDACS PLATE 40
- 8" CROSS WITH THRUST BLOCK PER UDACS PLATE 31
- 8"x6" REDUCER, WITH THRUST BLOCK PER UDACS PLATE 30 & 39
- VALVE BOX & COLLAR WITH VALVE LOCK
- EXCAVATE AND BACKFILL EX. SEWER LINE W/ CLSM II 10-FT EITHER SIDE OF WATER CROSSING

**LVVWD NOTES:**

TO ENSURE LVVWD ACCESS WITHIN EASEMENT  
 ALL ABOVE GROUND OBSTRUCTIONS INCLUDING BUT NOT LIMITED TO, LANDSCAPE BOULDERS, FENCES / WALLS, AND SIGNS ARE STRICTLY PROHIBITED WITHIN EASEMENT.

**FIRE FLOW CALCULATIONS  
 CLV FIRE DEPARTMENT**

FIRE FLOW REQUIREMENT IS 1,500 GALLONS PER MINUTE AT 20 POUNDS PER SQUARE INCH RESIDUAL

BASED ON:	EXISTING 1-BR FOUR-PLEX
SQUARE FOOTAGE:	2,532 SF
LARGEST AREA BETWEEN 4 HOUR SEPARATION WALLS:	2,532 SF
BUILDING HEIGHT:	10-FT
NUMBER OF STORIES:	1
TYPE OF CONSTRUCTION:	V-B
OCCUPANCY:	R-2
FULL AUTOMATIC FIRE SPRINKLER SYSTEM:	YES
REQUIRED FIRE FLOW (1500 GPM MIN, 50% REDUCTION FOR SPRINKLERS):	1,500 GPM

REVIEW BY: *[Signature]*  
 DATE: 6/19/19

**EX. UTILITY NOTE**

- PROTECT IN PLACE AND ADJUST LVVWD EXISTING FACILITIES TO FINISHED GRADE PER UDACS. ALL LVVWD FACILITIES SHALL BE ACCESSIBLE AT ALL TIMES.

**BENCHMARK**

CITY OF LAS VEGAS BENCHMARK "0LV01 2866A", RIVET & PLATE IN TOP OF CURB AT SE CORNER OF BRUCE & TODD  
 ELEVATION: 1865.7 (US SURVEY FEET) 568.665 (METERS)  
 BASED ON NORTH AMERICAN VERTICAL DATUM OF 1988 (NAVD 88).

**BASIS OF BEARINGS**

THE CENTERLINE OF OWENS AVENUE AND THE NORTH LINE OF THE NORTHWEST QUARTER (NW 1/4) OF SECTION 26, TOWNSHIP 20 SOUTH, RANGE 61 EAST, M.D.M., CITY OF LAS VEGAS, CLARK COUNTY, NEVADA, HAVING A BEARING OF N 89° 47' 09" E, ALSO BEING N 89° 38' 28" E AS SHOWN ON MAP THEREOF ON FILE IN BOOK 120 OF PARCEL MAPS, PAGE 89, OFFICIAL RECORDS, CLARK COUNTY NEVADA.

**QUANTITY ESTIMATE**

	PRIVATE	PUBLIC
8" RPDA	2 EA	2 EA
8" PVC WL	1,562 LF	70 LF
6" PVC WL	1,662 LF	
8" GATE VALVE	13 EA	
12"x8" TAPPING SLEEVE AND VALVE		1 EA
10"x8" TAPPING SLEEVE AND VALVE		1 EA
FIRE HYDRANT ASSEMBLY	6 EA	
4" RPPA		2 EA

NOTE: THESE QUANTITIES ARE FOR PLANS CHECKING PURPOSES ONLY AND SHOULD NOT BE USED BY CONTRACTORS TO DETERMINE FINAL QUANTITIES.

**APPROVALS:**

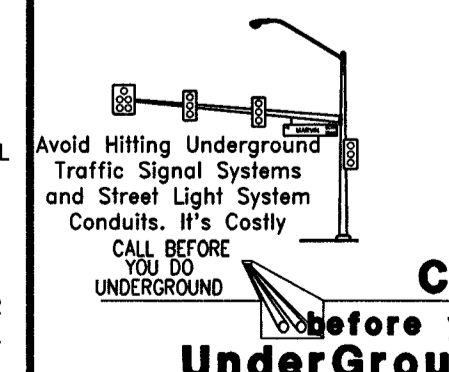
*[Signature]*  
 LAS VEGAS VALLEY WATER DISTRICT ENGINEERING SERVICES  
 PROJECT NO.: 136454 FIRST APPROVED DATE: 9-9-19  
 LVVWD APPROVED FIRE FLOW:  
 TOTAL 1500 GPM/ONSITE 1500 GPM

**UTILITY NOTES**

- ALL SEWER/STORM DRAIN CROSSING WATER LINES MUST COMPLY WITH UDACS SECTION 2.22
- CONTRACTOR TO VERIFY DEPTH AND LOCATION OF EXISTING SANITARY SEWERLINE PRIOR TO CONSTRUCTION, AND DISCREPANCY TO BE BROUGHT TO THE ATTENTION OF THE ENGINEER PRIOR TO COMMENCEMENT OF CONSTRUCTION.
- EXISTING GAS AND WATER UTILITY LINES TO REMAIN. CONTRACTOR RESPONSIBLE FOR ANY DAMAGE.
- DISPOSAL OF ASBESTOS CEMENT PIPE (ACP) SHALL BE IN ACCORDANCE WITH ALL LOCAL, STATE, AND FEDERAL REGULATIONS.

**DISCLAIMER NOTE:**

UTILITY LOCATIONS SHOWN HEREON ARE APPROXIMATE ONLY. IT SHALL BE THE CONTRACTORS RESPONSIBILITY TO DETERMINE THE EXACT HORIZONTAL AND VERTICAL LOCATION OF ALL EXISTING UNDERGROUND OR OVERHEAD UTILITIES PRIOR TO COMMENCING CONSTRUCTION. NO REPRESENTATION IS MADE THAT ALL EXISTING UTILITIES ARE SHOWN HEREON. THE ENGINEER ASSUMES NO RESPONSIBILITY FOR UTILITIES NOT SHOWN OR UTILITIES NOT SHOWN IN THEIR PROPER LOCATION. CONTRACTOR TO NOTIFY ENGINEER OF ANY CHANGES OR DISCREPANCIES.



Call before you Dig  
 1-702-455-7511  
 CLARK COUNTY TRAFFIC OPERATIONS  
 AND  
 1-702-423-5300  
 LAS VEGAS AREA COMPUTERIZED TRAFFIC SYSTEM

DATE: JULY 23, 2019 SCALE: H:1"=30' V:1"=10' DRAWN BY: SDC DESIGNED BY: JGM CHECKED BY: JJP

APRIL 2019

WOOD RODGERS  
 DEVELOPING INNOVATIVE DESIGN SOLUTIONS  
 2800 East Pabian Road Ste. 145 Las Vegas, NV 89123

IMPROVEMENT PLANS FOR  
**ARCHIE GRANT PARK MODERNIZATION**  
 UTILITY PLAN - FIRE SPRINKLER

PROJECT NO. 1982  
 SHT 4 OF 6  
 DRAWING U-1  
 L19-00591

PROJ.#: 136454A QS:139-26-NV

APN 139-26-101-003  
CITY OF LAS VEGAS  
OR 69-00402162

FOREMASTER LANE (PUBLIC)

SEARLES AVENUE (PUBLIC)

BRUCE STREET (PUBLIC)

APN 139-26-102-007  
CHESAPEAKE MEDIA 1 LLC  
OR 20141104:00002527

APN 139-26-201-005  
SOUTHERN NEVADA HOUSING AUTHORITY  
OR 20100205:0000460

DN-1675  
EX SSMH  
STA: 1641.07  
OFFSET: 0.97' R  
RIM: (1,870.37)  
INV THRU (8'): (1,865.78)

Ex 2" PE GAS  
0106431984

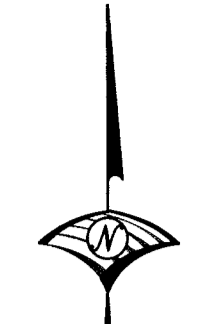
Ex 4" PE GAS  
3266895

Ex 4" PE GAS  
3266895

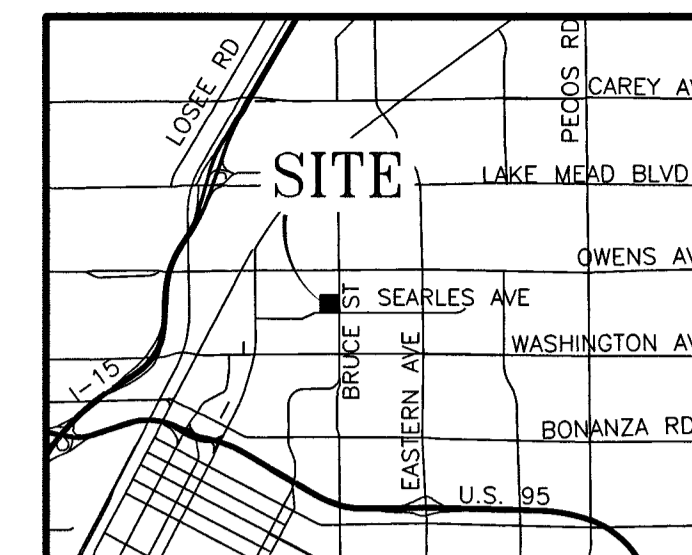
Ex 2" PE GAS  
PE 5292

Ex 6" ST GAS  
9304621259

DN-106  
EX SSMH  
STA: 1043.24  
OFFSET: 0.62' R  
RIM: (1,866.38)  
INV IN (8'-W): (1,863.18)  
INV THRU (8'): (1,862.01)



30' 15' 0' 30'  
SCALE: 1" = 30'



VICINITY MAP  
NOT TO SCALE

**SEWER CONSTRUCTION NOTES**

- UNDERGROUND UTILITIES LOCATIONS SHOWN ON THE DRAWINGS WERE OBTAINED BY UTILITY LOCATION SERVICE AND SITE SURVEY. THE ENGINEER ASSUMES NO RESPONSIBILITY FOR UTILITIES NOT SHOWN OR IN THE LOCATION SHOWN ON THE DRAWINGS.
- EXISTING SANITARY SEWER TO BE ABANDONED IN PLACE (ALL ON-SITE SEWER NOT IN CONFLICT WITH PROPOSED IMPROVEMENTS TO BE ABANDONED IN PLACE) PER DCSWCS 3.18.1 METHOD C
- EXISTING SANITARY SEWER TO BE REMOVED (REMOVE ALL EXISTING ON-SITE SANITARY SEWER FACILITIES IN DIRECT CONFLICT WITH PROPOSED IMPROVEMENTS) PER DCSWCS 3.18.1 METHOD C
- 8" SDR35 PVC SANITARY SEWER, TRENCH PER DCSWCS DRAWING NO. SD-18 (PAVED RIGHT-OF-WAY) (PRIVATE)
- 8" SDR35 PVC SANITARY SEWER, TRENCH PER DCSWCS DRAWING NO. SD-16 (ON-SITE) (PRIVATE)
- 6" SDR35 PVC SANITARY SEWER, TRENCH PER DCSWCS DRAWING NO. SD-16
- 4" SDR35 PVC SANITARY SEWER, TRENCH PER DCSWCS DRAWING NO. SD-16
- 6" WATER QUALITY PVC SANITARY SEWER, TRENCH PER DCSWCS DRAWING NO. SD-16
- 4" WATER QUALITY PVC SANITARY SEWER, TRENCH PER DCSWCS DRAWING NO. SD-16
- REMOVE EXISTING LATERAL AND CONNECT TO EXISTING MANHOLE
- 48" SANITARY SEWER MANHOLE PER DCSWCS DRAWING NO. SD-1A
- CLEAN OUT PER DCSWCS DRAWING NO. SD-26
- LATERAL CONNECTION PER DCSWCS DRAWING NO. SD-22
- SEE M.E.P. PLANS FOR CONTINUATION
- PAVEMENT PATCH PER CCAUSD #500.5 & #503
- PAVEMENT PATCH PER CCAUSD #500.5 & #503
- 8" C900 PVC SANITARY SEWER, TRENCH PER DCSWCS DRAWING NO. SD-18 (PAVED RIGHT-OF-WAY) (PRIVATE)
- EXCAVATE AND BACKFILL EX. SEWER LINE W/ CLSM II 10'-FT EITHER SIDE OF WATER CROSSING

SOUTHWEST GAS CORPORATION  
Jacob Sakagami 09/25/19  
DATE

**APPROVALS:**

LAS VEGAS VALLEY WATER DISTRICT ENGINEERING SERVICES  
PROJECT NO: 136454 FIRST APPROVED DATE: 9-9-19  
LVVWD APPROVED FIRE FLOW:  
TOTAL 1500 GPM/ONSITE 1500 GPM

**QUANTITY ESTIMATE**

	PRIVATE	PUBLIC
48" SANITARY SEWER MANHOLE	3 EA	
8" PVC SDR35 SANITARY SEWER	234 LF	
8" PVC C900 SANITARY SEWER	48 LF	
6" PVC SDR35 SANITARY SEWER	408 LF	
6" PVC C900 SANITARY SEWER	665 LF	
4" PVC SDR35 SANITARY SEWER	266 LF	
4" PVC C900 SANITARY SEWER	429 LF	
SANITARY SEWER CLEAN OUT	37 EA	

NOTE:  
THESE QUANTITIES ARE FOR PLANS CHECKING PURPOSES ONLY AND SHOULD NOT BE USED BY CONTRACTORS TO DETERMINE FINAL QUANTITIES.

**EX. UTILITY NOTE**

- EXISTING UTILITIES DAMAGED DURING CONSTRUCTION ARE TO BE REMOVED AND REPLACED IN KIND A MINIMUM OF 5'-FEET EITHER SIDE OF DAMAGED LOCATION

**BENCHMARK**

CITY OF LAS VEGAS BENCHMARK "OLV01 26N6A", RIVET & PLATE IN TOP OF CURB AT SE CORNER OF BRUCE & TODD  
ELEVATION: 1865.7 (US SURVEY FEET)  
568.665 (METERS)

BASED ON NORTH AMERICAN VERTICAL DATUM OF 1988 (NAVD 88).

**BASIS OF BEARINGS**

THE CENTERLINE OF OWENS AVENUE AND THE NORTH LINE OF THE NORTHWEST QUARTER (NW 1/4) OF SECTION 26, TOWNSHIP 20 SOUTH, RANGE 81 EAST, M.D.M., CITY OF LAS VEGAS, CLARK COUNTY, NEVADA, HAVING A BEARING OF N 89° 47' 09" E, ALSO BEING IN 89° 38' 29" E AS SHOWN ON MAP THEREOF ON FILE IN BOOK 120 OF PARCEL MAPS, PAGE 89, OFFICIAL RECORDS, CLARK COUNTY NEVADA.

**WASTEWATER FLOW CALCULATIONS**

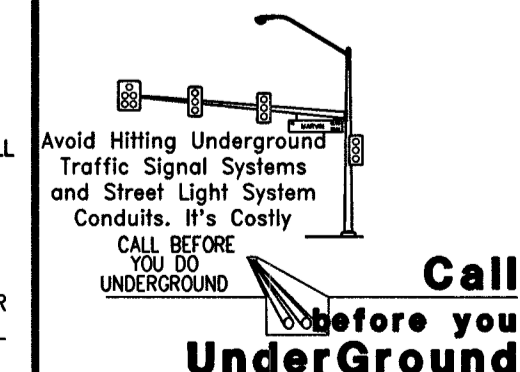
FACILITY TYPE: PUBLIC HOUSING  
AVG FLOW  
250 GPD x 0.8 ERU/UNIT x 72 UNITS = 14,400 GPD (0.0144 MGD)  
PEAK FLOW  
14,400 GPD x 3.5 PEAKING FACTOR = 50,400 GPD (0.0504 MGD)  
WET WEATHER PEAK FLOW  
0.0504 MGD x 1.25 WET-WEATHER FACTOR = 0.063 MGD

**UTILITY NOTES**

- ALL SEWER/STORM DRAINS CROSSING WATER LINES MUST CONFORM TO SECTION 2.19 OF UNIFORM DESIGN AND CONSTRUCTION STANDARDS FOR WATER DISTRIBUTION SYSTEMS (UDACS) FOR WATER AND STORM MAIN CROSSINGS AND CLEARANCES.
- CONTRACTOR TO VERIFY DEPTH AND LOCATION OF EXISTING SANITARY SEWERLINE PRIOR TO CONSTRUCTION AND DISCREPANCY TO BE BROUGHT TO THE ATTENTION OF THE ENGINEER PRIOR TO COMMENCEMENT OF CONSTRUCTION.
- EXISTING GAS AND WATER UTILITY LINES TO REMAIN. CONTRACTOR RESPONSIBLE FOR ANY DAMAGE.

**DISCLAIMER NOTE:**

UTILITY LOCATIONS SHOWN HEREON ARE APPROXIMATE ONLY. IT SHALL BE THE CONTRACTOR'S RESPONSIBILITY TO DETERMINE THE EXACT HORIZONTAL AND VERTICAL LOCATION OF ALL EXISTING UNDERGROUND OR OVERHEAD UTILITIES PRIOR TO COMMENCING CONSTRUCTION. NO REPRESENTATION IS MADE THAT ALL EXISTING UTILITIES ARE SHOWN HEREON. THE ENGINEER ASSUMES NO RESPONSIBILITY FOR UTILITIES NOT SHOWN OR UTILITIES NOT SHOWN IN THEIR PROPER LOCATION. CONTRACTOR TO NOTIFY ENGINEER OF LOCATION ANY CHANGES OR DISCREPANCIES.



Call before you Dig  
1-702-455-7511  
CLARK COUNTY TRAFFIC OPERATIONS  
AND  
1-702-423-5300  
LAS VEGAS AREA COMPUTERIZED TRAFFIC SYSTEM  
Call before you Overhead  
1-702-227-2929

Call before you UnderGround  
1-702-455-7511  
CLARK COUNTY TRAFFIC OPERATIONS  
AND  
1-702-423-5300  
LAS VEGAS AREA COMPUTERIZED TRAFFIC SYSTEM  
650.127

DATE: JULY 23, 2019  
SCALE: H:1"=30' V:  
DRAWN BY: SDC  
DESIGNED BY: JGM  
CHECKED BY: JLP

PROFESSIONAL ENGINEER - STATE OF NEVADA  
JESSE J. FLETCHER  
No. 19854

WOOD RODGERS  
DEVELOPING INNOVATIVE DESIGN SOLUTIONS  
2100 East Pabian Road Ste. 145 Las Vegas, NV 89123  
Tel 702.220.3680

IMPROVEMENT PLANS FOR  
**ARCHIE GRANT PARK MODERNIZATION**  
UTILITY PLAN - SANITARY SEWER

PROJECT NO. 1982  
SHT 5 OF 6  
DRAWING U-2  
L19-00591

PROJ.#: 136454 CS: 139-26-NW



