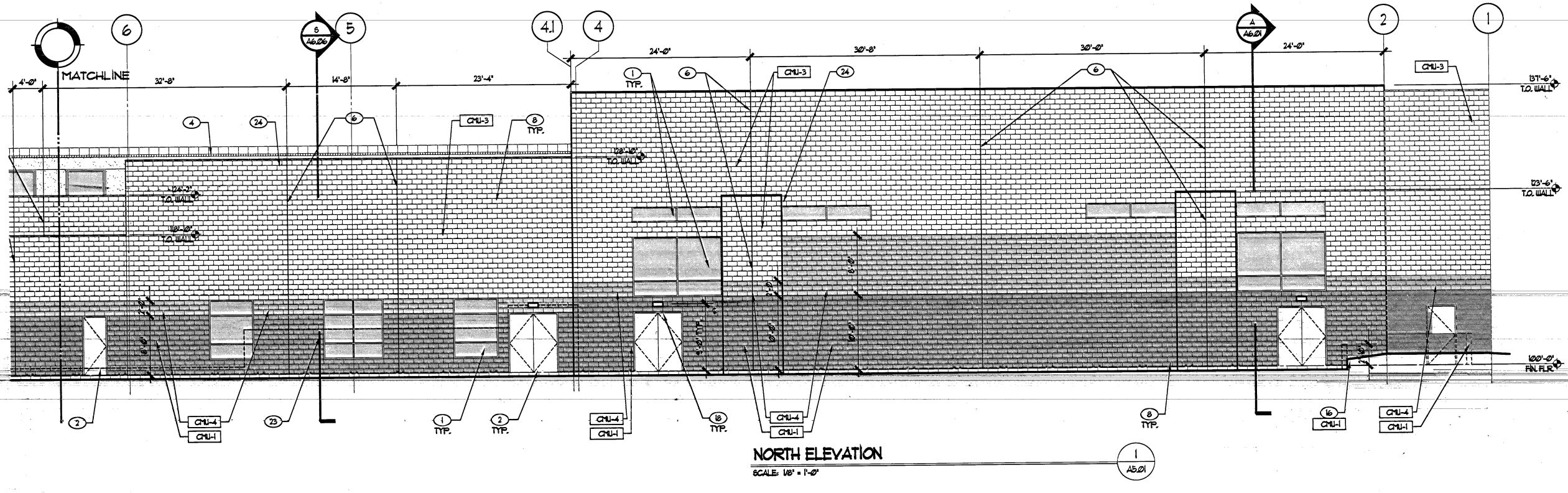
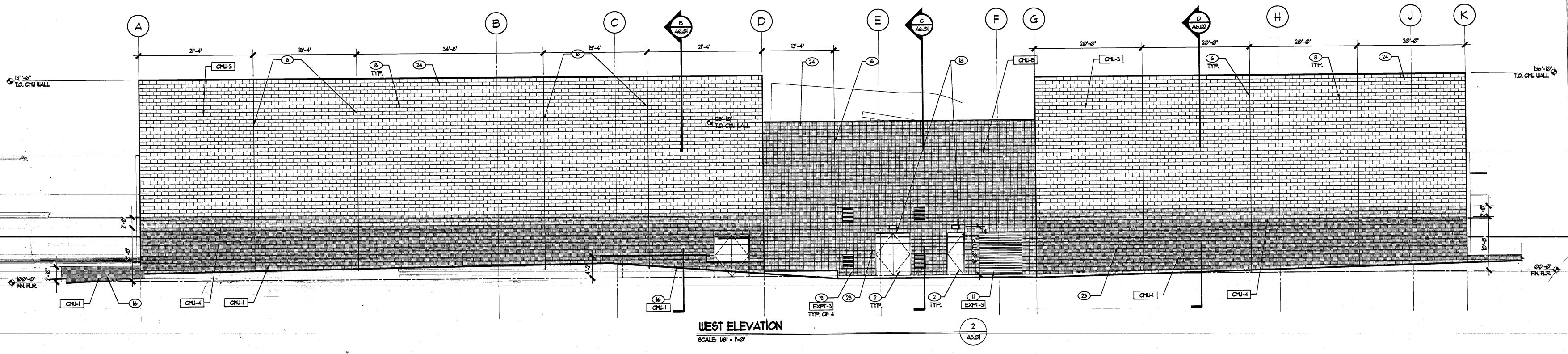


NORTH ELEVATION
SCALE: 1/8" = 1'-0"



NORTH ELEVATION
SCALE: 1/8" = 1'-0"



WEST ELEVATION
SCALE: 1/8" = 1'-0"

GENERAL NOTES	
1.	ALUMINUM DOOR AND WINDOW FRAMES TO BE PAINTED EXPT-2
2.	REFER TO MATERIAL FINISH SCHEDULE FOR EXTERIOR PAINTS
C.M.U. LEGEND	
CHU-1	SPLIT-FACE CHU, RED/BROWN COLOR W/ 8"x24" CAP BLOCK + PARAPET
CHU-2	CHU, BONE COLOR W/ 8"x24" CAP BLOCK + PARAPET
CHU-3	SPLIT-FACE CHU, BONE COLOR W/ 8"x24" CAP BLOCK + PARAPET
CHU-4	CHU, YELLOW COLOR W/ 8"x24" CAP BLOCK + PARAPET
CHU-5	SMOOTH SINGLE-SCORE CHU, YELLOW COLOR W/ 8"x24" CAP BLOCK + PARAPET
CHU-6	SMOOTH SINGLE-SCORE CHU, RED/BROWN COLOR W/ 8"x24" CAP BLOCK + PARAPET
CHU-7	BLUE SINGLE-SCORE GLAZED CHU
CHU-8	BROWN SINGLE-SCORE GLAZED CHU
CHU-9	SMOOTH CHU, RED/BROWN COLOR W/ 8"x24" CAP BLOCK + PARAPET
NOTE: REFER TO MATERIAL FINISH LEGEND FOR ADDITIONAL INFORMATION	
CONCRETE LEGEND	
CONC-1	INTEGRAL COLORED CONCRETE WALL - GREEN, SMOOTH ARCHITECTURAL FINISH
CONC-2	INTEGRAL COLORED CONCRETE WALL - BROWN, SAND BLAST ARCHITECTURAL FINISH
NOTE: REFER TO MATERIAL FINISH LEGEND FOR ADDITIONAL INFORMATION	
KEYNOTES	
1	ALUMINUM GLAZING SYSTEM
2	PAINTED HOLLOW METAL DOOR - REFER TO DOOR SCHEDULE EXPT-4 WHERE DOOR IS ADJACENT TO CHU-4. HM DOOR TO BE PAINTED EXPT-5. HM FRAME TO BE PAINTED EXPT-6 WHERE DOOR IS ADJACENT TO ALL OTHER CHU COLORS.
3	SHADE CANOPY STRUCTURE, REFER TO ROOF PLAN, DETAILS, & STRUCTURAL
4	STANDING SEAM METAL ROOF
5	PLANTER WALL
6	CHU CONTROL JOINT
7	CURTAIN WALL SYSTEM
8	CHU WALL - ALL EXPOSED CHU WALLS TO RECEIVE WATER REPELLANT, EXCEPT FOR PARAPETS THAT RECEIVE ELASTOMERIC COATING
9	TUBE STEEL COLUMN PAINTED EXPT-1, REFER TO STRUCTURAL & DETAILS
10	ELF&S CONTROL JOINT IN LINE VERTICALLY WITH SIDE JAMBES OF WINDOWS AND DOORS. ALSO, LOCATE CONTROL JOINTS HORIZONTALLY AS SHOWN
11	ROLL-UP DOOR PAINTED - REFER TO DOOR SCHEDULE
12	PERFORATED GALVANIZED SHEET METAL PAINTED EXPT-1
13	INTEGRAL COLOR CONCRETE WALL
14	ELF&S PAINTED
15	SHADING DEVICE PAINTED EXPT-1
16	MASONRY SITE WALL
17	LEATHERED STEEL CANALE - REFER TO 4-1043
18	EXTERIOR LIGHT FIXTURE - REFER TO ELECTRICAL DRAWINGS. GRIND SMOOTH CHU TO ACCOMMODATE MOUNTING OF LIGHT AT SPLIT-FACE BLOCK, TYP.
19	PAINTED MECHANICAL LOUVER-REFER TO BUILDING SECTIONS
20	TUBE STEEL TRELLIS PAINTED EXPT-1
21	STEEL COLUMN, REFER TO STRUCTURAL & 10411
22	ELF&S CONTROL JOINT IN LINE HORIZONTALLY WITH TOP AND BOTTOM OF WINDOW AT PERHENADE. ALSO, LOCATE CONTROL JOINTS VERTICALLY CENTERED BETWEEN WINDOWS AT GRID LINES 6, 1, 8, 9, & EX. 4 EX.
23	DASH LINE REPRESENTS OUTLINE OF SITE WALL
24	8"x24" CHU CAP BLOCK TO MATCH FIELD-REFER TO CHU LEGEND FOR TYPE & COLOR TYP. AT ALL PARAPET WALLS
25	DRAINING FOUNTAIN - REFER TO PLUMBING DRAWINGS
26	HANDICAP ACCESSIBLE SHOWER - REFER TO PLUMBING DRAWINGS
27	STEEL SCREEN TRELLIS PAINTED EXPT-1
28	TUBE STEEL MECHANICAL DRAIN WITH PERFORATED SHEET METAL PAINTED EXPT-2
29	6" DIAMETER METAL DRAINOUT ATTACHED TO STEEL COLUMN BEYOND, SEE CIVIL FOR CATCH BASIN, COORDINATE CONTINUATION WITH LANDSCAPE. REFER TO ELEVATION 54502 FOR SITE WALL ELEVATION
30	FIRE SPRINKLER / RISER ROOM SIGNAGE - REFER TO 5413
31	SIGNAGE - REFER TO E5101
32	KNOX BOX - INSTALL PER CITY OF LAS VEGAS FIRE DEPARTMENT STANDARDS
33	REFER TO SITE PLANS & DOOR SCHEDULE FOR GATE INFORMATION
34	GATE BEYOND - REFER TO DOOR SCHEDULE
35	SIGNAGE - CONTRACTOR TO COORDINATE POWER AND MOUNTING W/ ARCHITECT & OWNER
36	VERTICAL CONCRETE CONTROL JOINT AT HEIGHT TRANSITION IN WALL
37	VERTICAL CONCRETE CONTROL JOINT, LOCATE AT MID POINT OF RADUS WALL
38	METAL PANEL SYSTEM TO MATCH ROOF COLOR
39	STEEL COLUMN, PAINTED EXPT-2
40	SHADING DEVICE PAINTED EXPT-1
41	EXHAUST FAN HOODED WALL CAP, PAINT COLOR EXPT-2

OWNER: CITY OF LAS VEGAS
 DEPARTMENT OF PUBLIC WORKS
 ARCHITECTURAL SERVICES
 400 EAST STEWART AVENUE
 LAS VEGAS, NEVADA 89101
 PHONE: (702) 225-5535
 FAX: (702) 388-8846
 TDD: (702) 388-9108

DRAW: LSA
 FILE: 20071-00-001
 DATE: 03/04/08
 SCALE: 1/8" = 1'-0"
 SHEET: 25153410
 C/DWG NO: 611-48

PROJECT: CENTENNIAL HILLS COMMUNITY CENTER
 RECORD DRAWINGS
 BUILDING ELEVATIONS

LUCCHESI ARCHITECTS
 500 PILOT ROAD, SUITE A,
 LAS VEGAS, NEVADA 89119
 (702) 263-7711
 (702) 263-8111 FAX

123433
 07/31/08 10:30 PM

A5.01