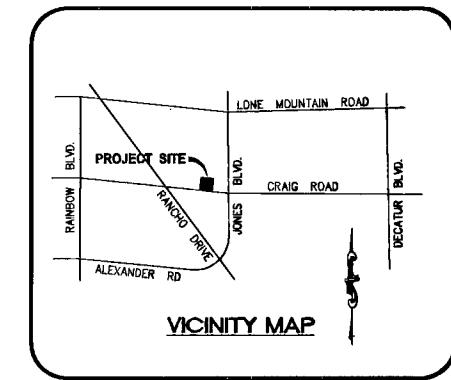
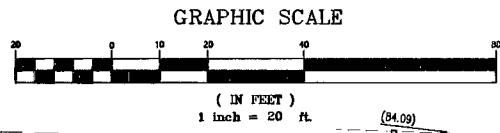


NOTE REGARDING EXIST. UTILITIES

ENGINEER ASSUMES NO RESPONSIBILITY FOR EXISTING UTILITY LOCATIONS AND ELEVATIONS. THE UTILITIES SHOWN ON THIS DRAWING HAVE BEEN PLOTTED FROM THE BEST AVAILABLE INFORMATION. IT IS THE CONTRACTOR'S RESPONSIBILITY TO FIELD VERIFY THE LOCATION AND ELEVATION OF ALL UTILITIES PRIOR TO THE COMMENCEMENT OF ANY CONSTRUCTION. CONTRACTOR TO FIELD VERIFY ALL EXISTING SITE CONDITIONS PRIOR TO CONSTRUCTION. IF A CONFLICT EXISTS BETWEEN WHAT IS SHOWN ON THESE DRAWINGS AND WHAT EXISTS IN THE FIELD, THE CONTRACTOR IS TO NOTIFY THE ARCHITECT OR ENGINEER IMMEDIATELY.



FLOOD ZONE

FEMA FLOOD ZONE 'X'
(NOT IN 100-YEAR FLOOD ZONE)
FEMA FIRM PANEL # 32003C 2155

EARTHWORK ESTIMATE

CUT: 150 C.Y.
FILL: 150 C.Y.

CONSTRUCTION NOTES

1. CONST. L-TYPE CURB & GUTTER PER DETAIL 1 ON SHEET C5
2. CONST. A-TYPE CURB PER DETAIL 2 ON SHEET C5
3. CONST. 3" AC PAVT ON 8" TYPE II AGG. BASE (PKG STALLS ONLY)
4. CONST. 3" AC PAVT ON 8" TYPE II AGG. BASE (TRAFFIC LANES)
5. CONST. TRASH ENCLOSURES PER ARCHITECT'S PLAN
6. CONST. 6" 4500-PSI CEMENT CONC. ON 8" TYPE II AGG. BASE.
7. REMOVE INTERFERING PORTIONS OF EX. CURB, GUTTER, & PAVT.
8. ADJUST TO GRADE EX. PULLBACK

REFER TO GEOTECHNICAL REPORT PREPARED FOR THIS SITE BY IBI CORPORATION, DATED SEPT. 15, 2005, (E# PROJECT NUMBER P040604) AND ANY UPDATES THERETO, FOR GEOTECHNICAL ENGINEERING PARAMETERS AND RECOMMENDATIONS.

THIS GRADING PLAN IS IN CONFORMANCE WITH THE APPROVED DRAINAGE STUDY ON FILE AT THE CITY OF LAS VEGAS FOR THIS PROJECT. (DS4382)

Mark Warling 8-19-10
MARK WARLING, P.E. No. 06538 DATE

BENCHMARK

CITY OF LAS VEGAS BENCHMARK # 11V002NEER
RIVET AND PLATE IN TOP OF CURB ON WEST SIDE
OF JONES BLVD, 1/4 MILE NORTH OF CRAIG ROAD.
NAVD 88' ELEV = 2267.78' FEET, 691.2214 METERS

BASIS OF BEARING

NORTH 84°05'24" WEST, BEING THE EAST SECTION LINE OF SECTION 2,
TOWNSHIP 20 SOUTH, RANGE 60 EAST M.D.M., AS SHOWN IN FILE 109 OF
PARCEL MAPS, PAGE 80, CLARK COUNTY, NEVADA OFFICIAL RECORDS.

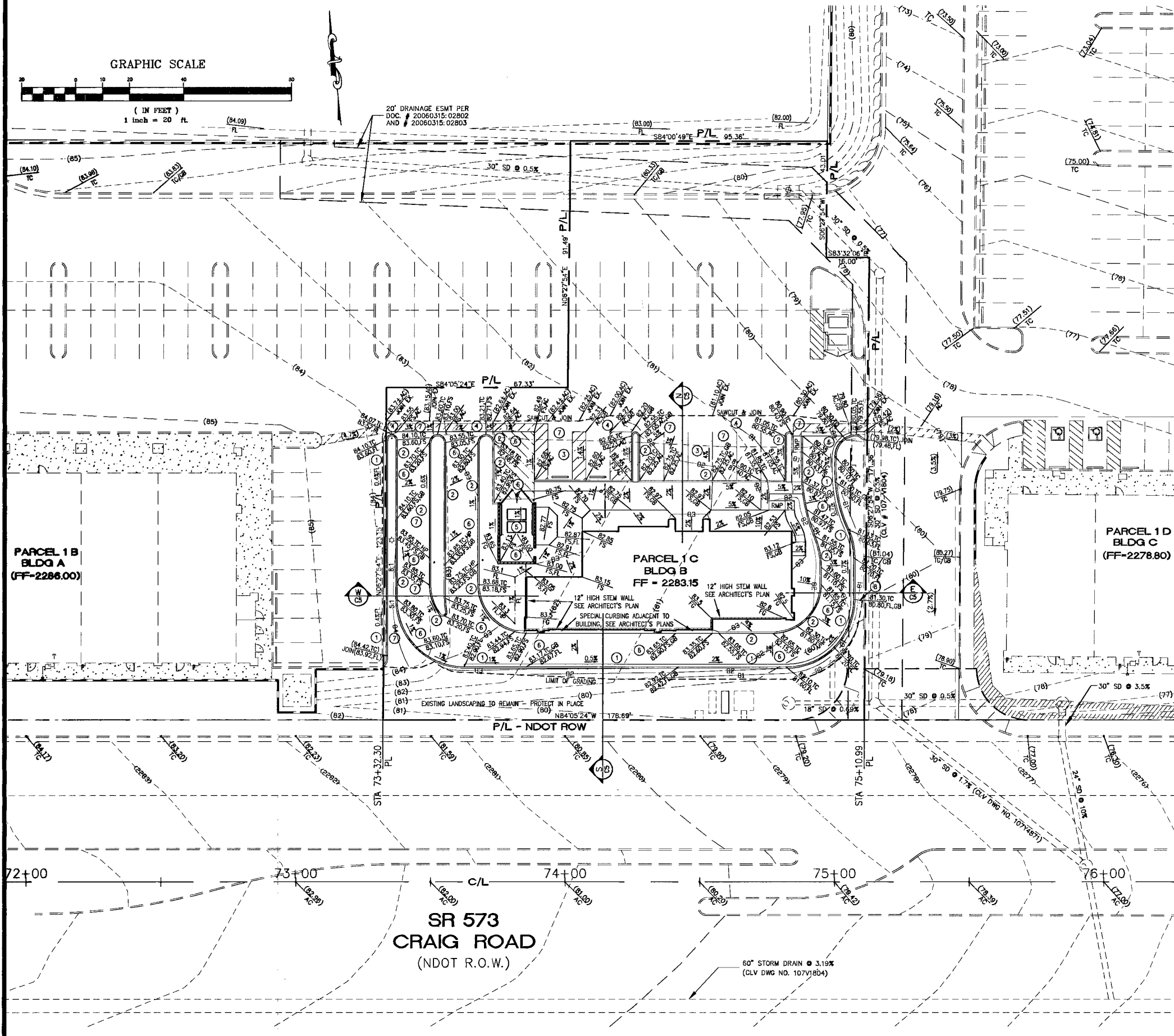
Call before you Dig
UnderGround
1-702-455-7511
CLARK COUNTY TRAFFIC OPERATIONS
1-702-228-6611
LAS VEGAS AREA COMPUTERIZED TRAFFIC SYSTEM

Call before you Dig
UnderGround
1-702-227-2929

Call before you Dig
UnderGround
1-800-227-2600
1-702-455-7544

WARLING ENGINEERING
MARK WARLING, CIVIL ENGINEER
5901 W. SAHARA AVE #105-L3
LAS VEGAS, NEVADA 89121
TEL: 702-228-6611
FAX: 702-228-6611
EMAIL: CIVIL@WARLING-ENG.COM

CLV H # 37078
CLV DRAWING NUMBER 1071V5387
SHEET C4 OF 8



122414