

NOTES TO CONTRACTOR

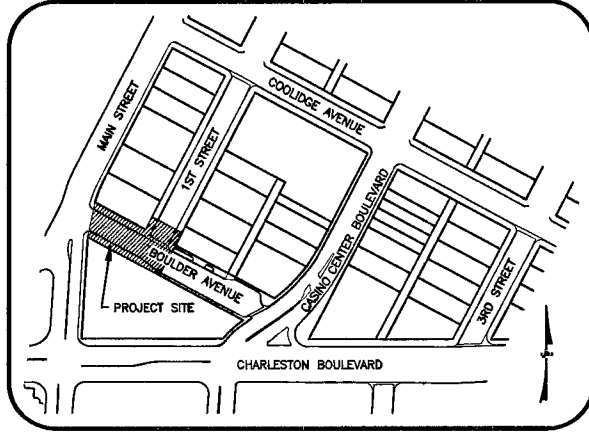
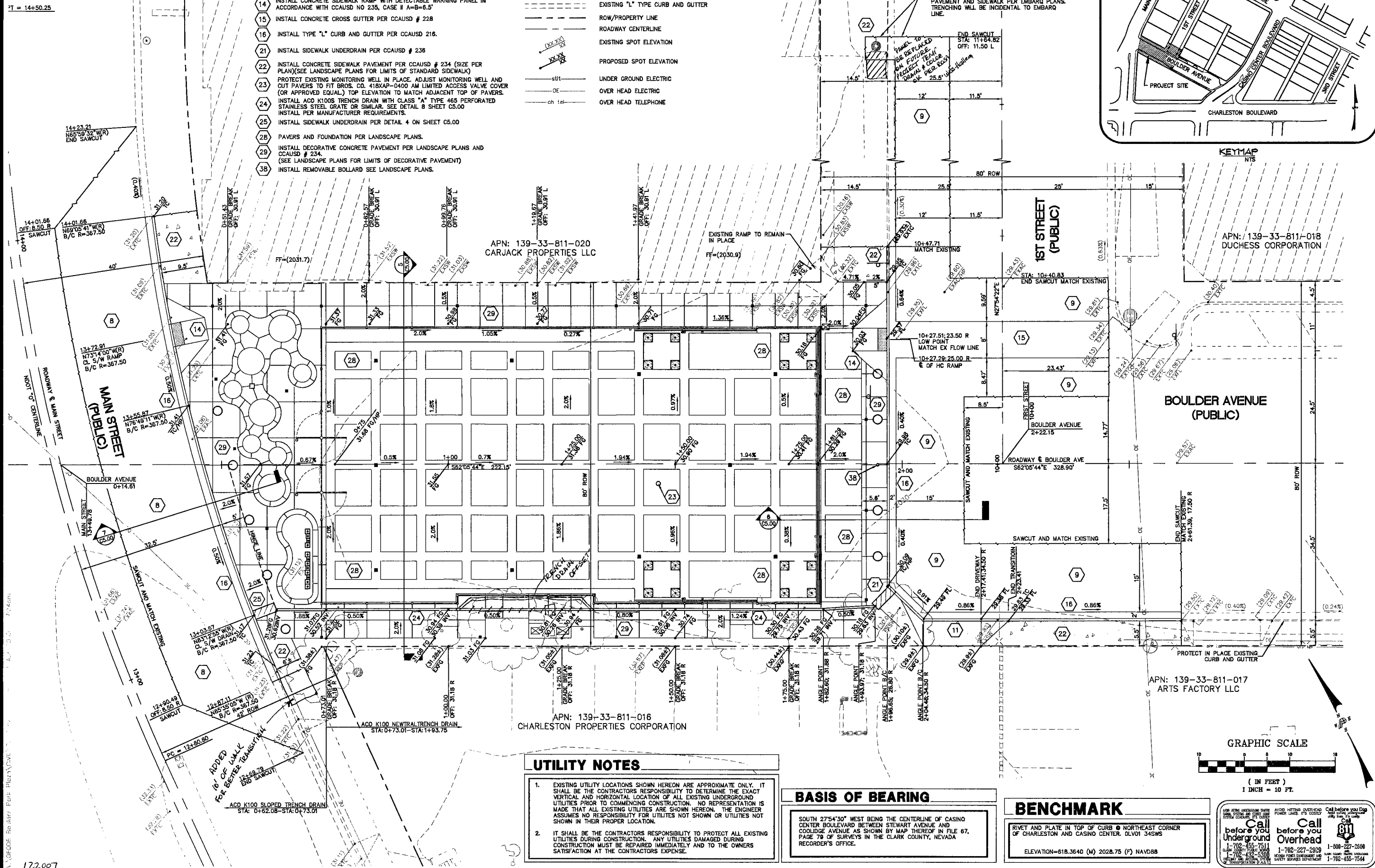
- DECORATIVE SURFACE TREATMENTS AND SITE AMENITIES PER LANDSCAPE PLANS, SEE SHEET L1.01

CONSTRUCTION NOTES

- 4" AC PAVEMENT OVER 10" TYPE II AGGREGATE BASE OR MATCH EXISTING PAVEMENT SECTION WHICHEVER IS GREATER. SEE DETAIL 1 SHEET C5.00
- 3" AC PAVEMENT OVER 6" TYPE II AGGREGATE BASE OR MATCH EXISTING PAVEMENT SECTION WHICHEVER IS GREATER. SEE DETAIL 2 SHEET C5.00
- INSTALL CONCRETE COMMERCIAL DRIVEWAY IN ACCORDANCE WITH CCAUSD # 224
- INSTALL CONCRETE SIDEWALK RAMP WITH DETECTABLE WARNING PANEL IN ACCORDANCE WITH CCAUSD NO 235, CASE II A-B=6.5'
- INSTALL CONCRETE CROSS GUTTER PER CCAUSD # 228
- INSTALL TYPE "L" CURB AND GUTTER PER CCAUSD # 216
- INSTALL SIDEWALK UNDERDRAIN PER CCAUSD # 236
- INSTALL CONCRETE SIDEWALK PAVEMENT PER CCAUSD # 234 (SIZE PER PLAN)(SEE LANDSCAPE PLANS FOR LIMITS OF STANDARD SIDEWALK)
- PROTECT EXISTING MONITORING WELL IN PLACE. ADJUST MONITORING WELL AND CUT PAVERS TO FIT BROS. CO. 418X49-0400 AM LIMITED ACCESS VALVE COVER (OR APPROVED EQUAL) TOP ELEVATION TO MATCH ADJACENT TOP OF PAVERS.
- INSTALL ACO K100S TRENCH DRAIN WITH CLASS "A" TYPE 465 PERFORATED STAINLESS STEEL GRATE OR SIMILAR. SEE DETAIL 8 SHEET C5.00
- INSTALL PER MANUFACTURER REQUIREMENTS.
- INSTALL SIDEWALK UNDERDRAIN PER DETAIL 4 ON SHEET C5.00
- PAVERS AND FOUNDATION PER LANDSCAPE PLANS.
- INSTALL DECORATIVE CONCRETE PAVEMENT PER LANDSCAPE PLANS AND CCAUSD # 234
- (SEE LANDSCAPE PLANS FOR LIMITS OF DECORATIVE PAVEMENT)
- INSTALL REMOVABLE BOLLARD SEE LANDSCAPE PLANS.

LEGEND

- CONCRETE SPHERE BOLLARD PER LANDSCAPE PLANS
- SITE LIGHTING PER ELECTRICAL PLANS. SEE SHEET E31 FOR FIXTURES
- SEATING CUBE PER LANDSCAPE PLANS
- EXISTING "L" TYPE CURB AND GUTTER
- ROW/PROPERTY LINE
- ROADWAY CENTERLINE
- EXISTING SPOT ELEVATION
- PROPOSED SPOT ELEVATION
- UNDER GROUND ELECTRIC
- OVER HEAD ELECTRIC
- OVER HEAD TELEPHONE



UTILITY NOTES

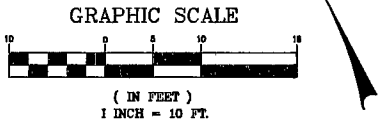
- EXISTING UTILITY LOCATIONS SHOWN HEREON ARE APPROXIMATE ONLY. IT SHALL BE THE CONTRACTOR'S RESPONSIBILITY TO DETERMINE THE EXACT VERTICAL AND HORIZONTAL LOCATION OF ALL EXISTING UNDERGROUND UTILITIES PRIOR TO COMMENCING CONSTRUCTION. NO REPRESENTATION IS MADE THAT ALL EXISTING UTILITIES ARE SHOWN HEREON. THE ENGINEER ASSUMES NO RESPONSIBILITY FOR UTILITIES NOT SHOWN OR UTILITIES NOT SHOWN IN THEIR PROPER LOCATION.
- IT SHALL BE THE CONTRACTOR'S RESPONSIBILITY TO PROTECT ALL EXISTING UTILITIES DURING CONSTRUCTION. ANY UTILITIES DAMAGED DURING CONSTRUCTION MUST BE REPAIRED IMMEDIATELY AND TO THE OWNERS SATISFACTION AT THE CONTRACTOR'S EXPENSE.

BASIS OF BEARING

SOUTH 27°54'30" WEST BEING THE CENTERLINE OF CASINO CENTER BOULEVARD BETWEEN STEWART AVENUE AND COOLIDGE AVENUE AS SHOWN BY MAP THEREOF IN FILE 67, PAGE 78 OF SURVEYS IN THE CLARK COUNTY, NEVADA RECORDER'S OFFICE.

BENCHMARK

RIVET AND PLATE IN TOP OF CURB @ NORTHEAST CORNER OF CHARLESTON AND CASINO CENTER. DLV01 345WS
ELEVATION=618.3640 (M) 2028.76 (F) NAVD88



Call before you dig
Call before you overhead

1-800-227-2600
1-702-227-2929
1-702-455-7514

REVISIONS	NO.	DATE:	DESCRIPTION	APP'D

DEPARTMENT OF PUBLIC WORKS
400 EAST STEWART
LAS VEGAS, NEVADA 89101
(702) 229-6276

poggemeyer
design group, inc.

9800 Smoke Ranch Road, Suite 110 • Las Vegas, NV 89123 • P: 702.256.8100 • F: 702.256.8575

TITLE: **BOULDER PARK PLAZA CITY OF LAS VEGAS**

SHEET: **CIVIL GRADING PLAN**

DRAWN BY: AP

DESIGNED BY: AP

CHECKED BY: PR

PROJECT NO: 06006

SCALE: 1" = 10'

Sheet **C3.00**
6 of 27
CLV DRAWING NO. 076-09

HANSEN NO. 11996

BID NO. 09.1130.22