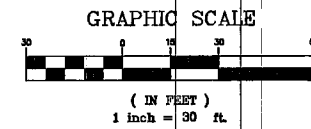
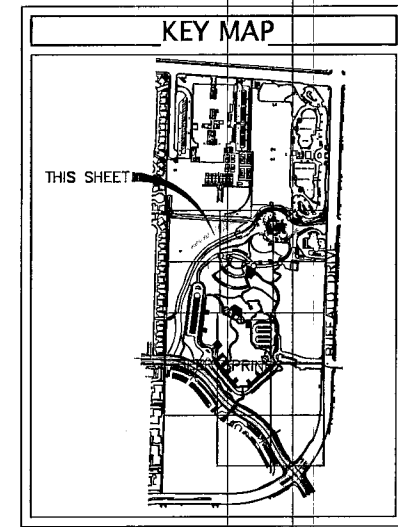
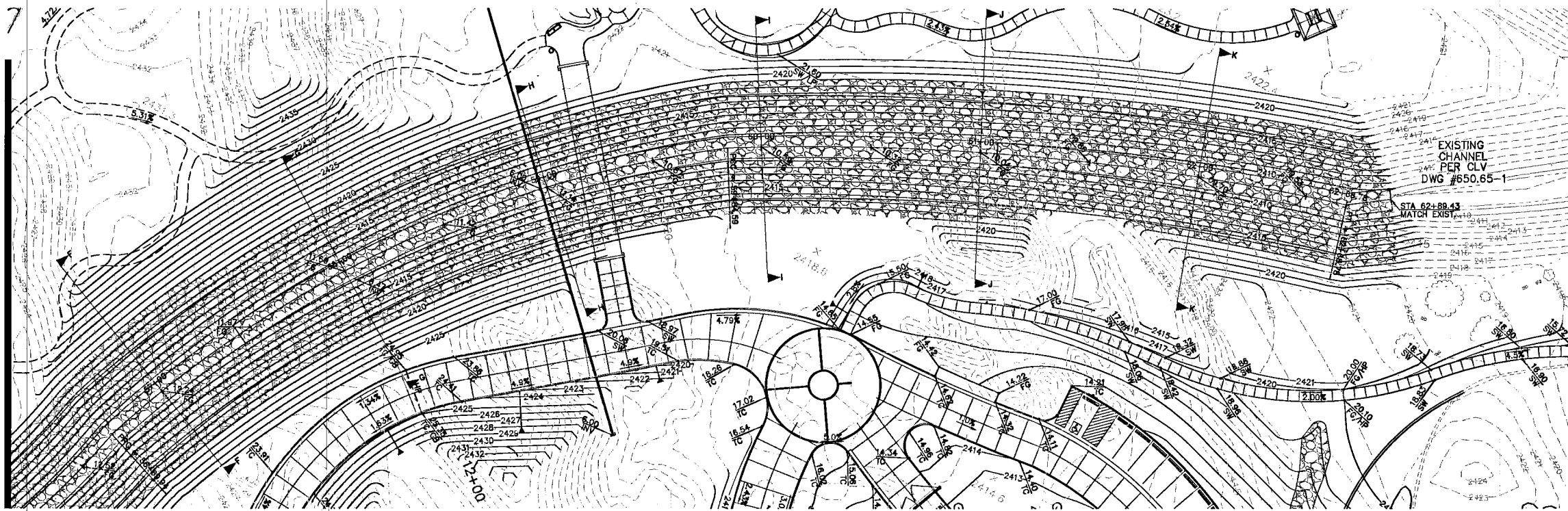
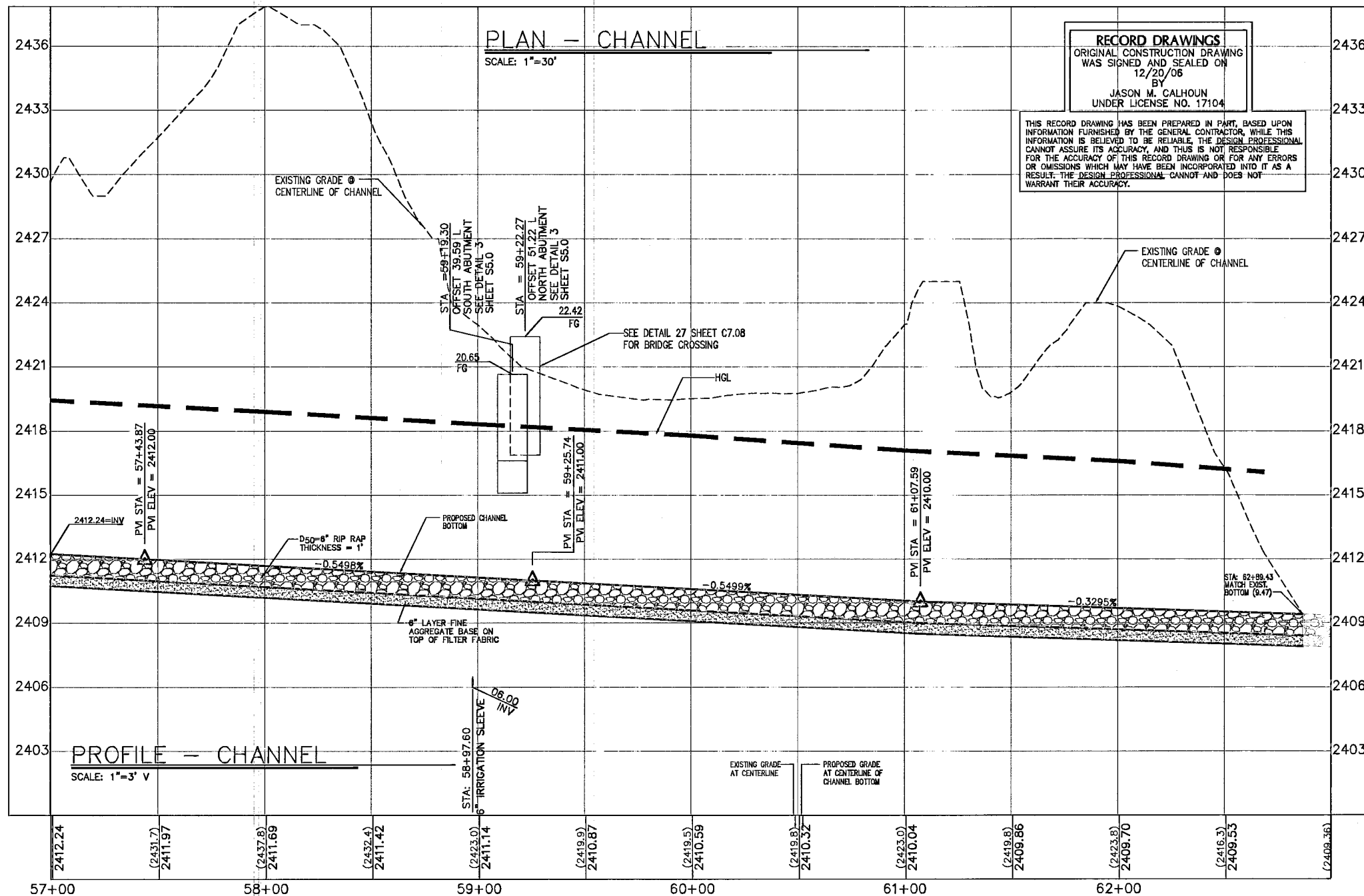


MATCHLINE SEE SHEET C6.01



NOTE:
PROPOSED RIP RAP TO MATCH EXISTING RIP RAP
IN EXISTING PHASE I CHANNEL PER CLV DWG # 650.65-1



RECORD DRAWINGS
ORIGINAL CONSTRUCTION DRAWING
WAS SIGNED AND SEALED ON
12/20/06
BY
JASON M. CALHOUN
UNDER LICENSE NO. 17104

THIS RECORD DRAWING HAS BEEN PREPARED IN PART, BASED UPON INFORMATION FURNISHED BY THE GENERAL CONTRACTOR, WHILE THIS INFORMATION IS BELIEVED TO BE RELIABLE, THE DESIGN PROFESSIONAL CANNOT ASSURE ITS ACCURACY, AND THUS IS NOT RESPONSIBLE FOR THE ACCURACY OF THIS RECORD DRAWING OR FOR ANY ERRORS OR OMISSIONS WHICH MAY HAVE BEEN INCORPORATED INTO IT AS A RESULT. THE DESIGN PROFESSIONAL CANNOT AND DOES NOT WARRANT THEIR ACCURACY.

BASIS OF BEARING
NORTH 01°51'37" EAST, BEING THE EAST LINE OF THE OF SECTION 21, TOWNSHIP 19 SOUTH, RANGE 60 EAST, M.D.M., CLARK COUNTY, NEVADA, AS SHOWN BY A MAP ON FILE IN THE OFFICE OF THE CLARK COUNTY RECORDER IN FILE 118 OF SURVEYS, PAGE 39

BENCHMARK
CITY OF LAS VEGAS RIVET AND ROUND PLATE IN TOP OF CURB, NORTHWEST CORNER OF BUFFALO DRIVE AND FARM ROAD NEAR PT OF BUFFALO DRIVE.
BM BLV9016E4 ELEVATION=2416.56 NAVD88

- CONSTRUCTION NOTES**
- INSTALL DROP INLET PER DETAIL 1 SHEET C7.10
 - INSTALL D₆₀ 6" RIP RAP

LEGEND

DESCRIPTION	PROPOSED	EXISTING
STORM DRAIN MANHOLE	●	○
GAS LINE	—G—	—GAS—
STORM DRAIN LINE	—SD—	—SD—
CONTOUR	XX/XX	XX/XX
ELEVATION	XXX.XX	XXX.XX
6" TYPE CURB	=====	=====
1" TYPE CURB	=====	=====
2" VALLEY GUTTER	=====	=====
GRADE BREAK	=====	=====

Call before you UnderGround

1-702-455-7511

1-702-726-6611

Call before you Dig.

1-800-227-2600

JW ZUNINO & ASSOCIATES
LANDSCAPE ARCHITECTURE
LAND PLANNING

3191 South Jones Blvd.
Las Vegas, Nevada 89146
Phone (702) 253-5380
Fax (702) 253-1018
E-Mail jwz@jwzunino.com

poggemeyer
design group, inc.

CENTENNIAL HILLS PARK - PHASE 3
100% Submittal

PLAN AND PROFILE

OWNER: CITY OF LAS VEGAS
DEPARTMENT OF PUBLIC WORKS
ARCHITECTURAL SERVICES

400 EAST STEWART AVENUE
LAS VEGAS, NEVADA 89101
PHONE: (702) 259-8538
FAX: (702) 364-8846
TDD: (702) 366-9108

DRAWN: B. FOOTE
FILE: C6.02-PROF
DATE: JULY 10, 2006
SCALE: 1"=30'
SHEET NO: 26.034103
CLV DWG NO: 650.65-3
SHEET NO: JULY 05/25/06
SHEET NO: C6.02

114.001