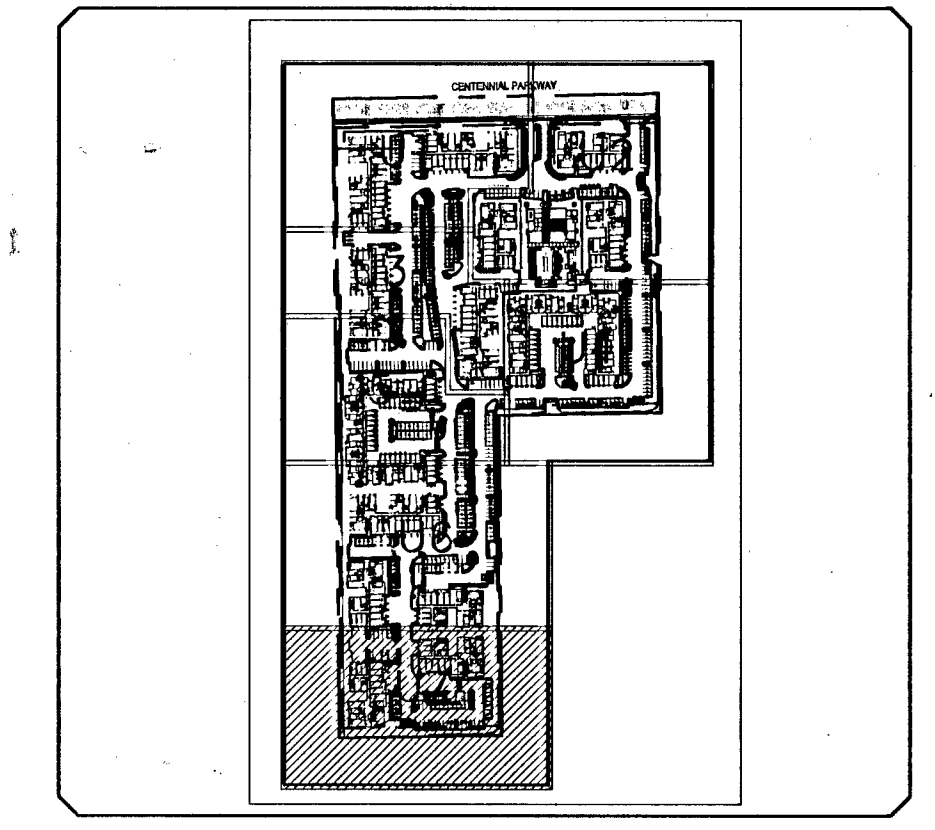
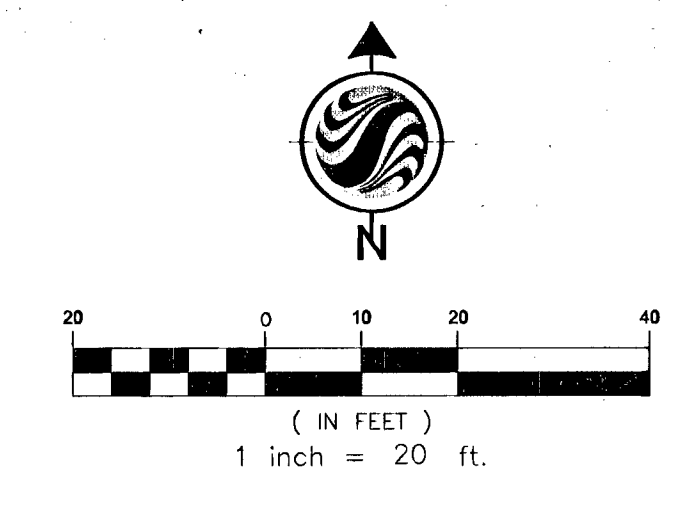
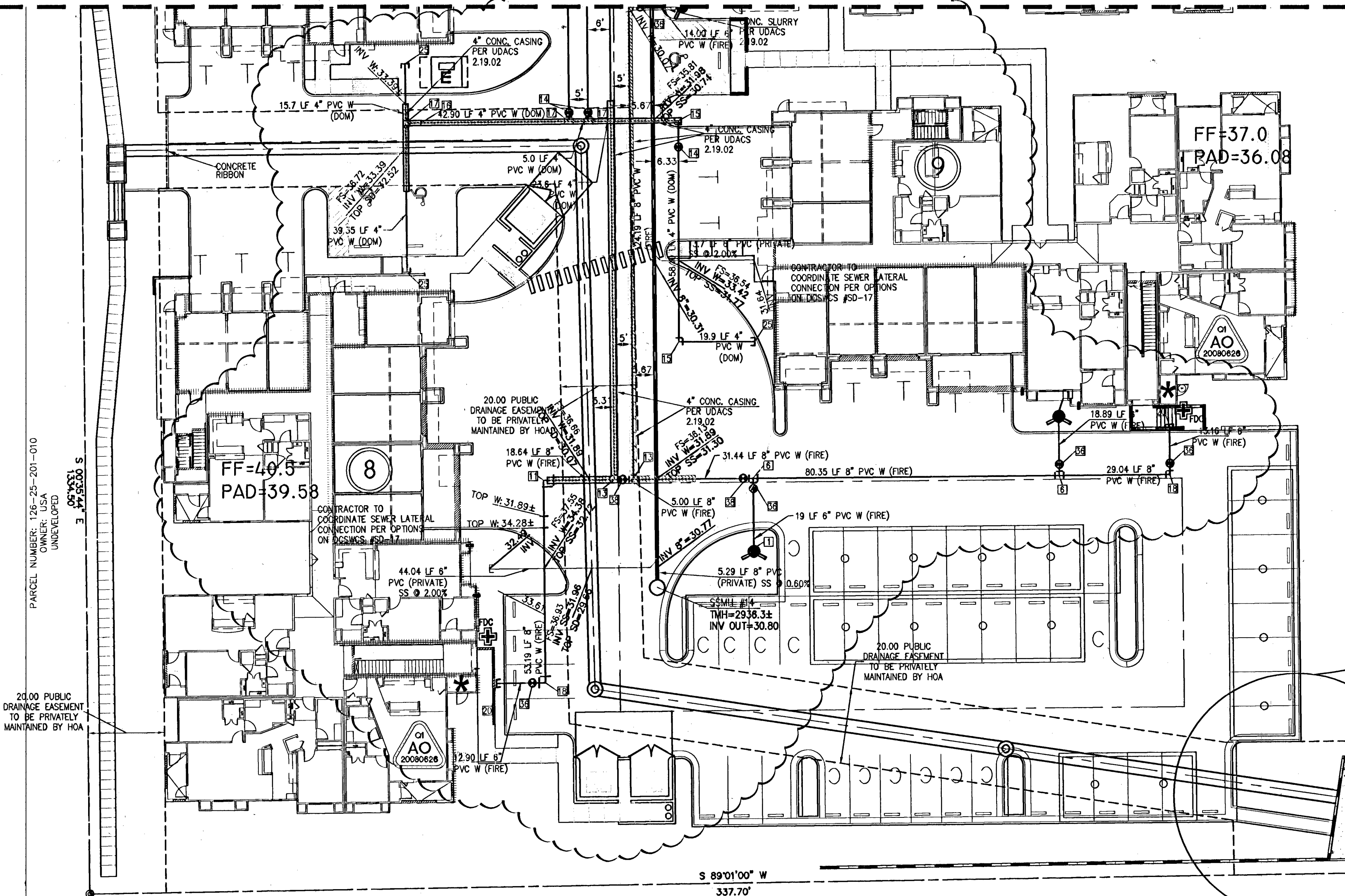
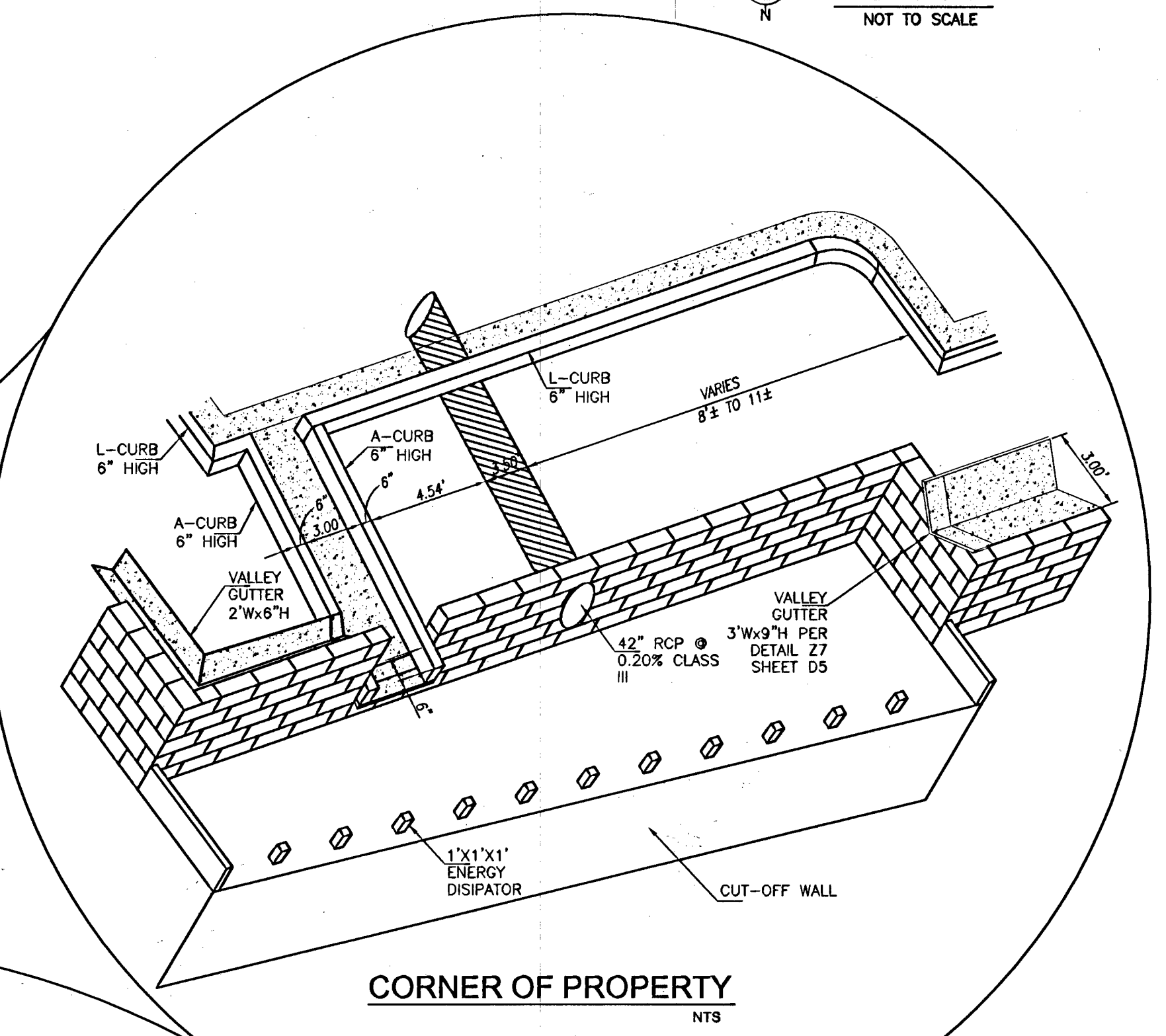


MATCHLINE SEE SHEET U6



KEY MAP NOT TO SCALE



CORNER OF PROPERTY NTS

AZURE DRIVE (ALIGNMENT)

**FIRE FLOW CALCULATIONS**

FIRE FLOW CALCULATIONS ARE BASED UPON THE LARGEST BUILDING TYPE WHICH IS TYPE IV-B.

FIRE FLOW REQUIREMENTS IS 3,125 GALLONS PER MINUTE AT 20 PSI RESIDUAL PRESSURE.

BASED ON: BLDG SQUARE FOOTAGE (SF.) 55,241 SF  
LARGEST AREA BETWEEN 4-HOUR N/A AREA SEPARATION WALLS (SF)  
BUILDING HEIGHT (FT) 44  
NUMBER OF STORES (FLOOR) 4  
NUMBER OF UNITS 4  
TYPE OF CONSTRUCTION IV-B  
FULL AUTOMATIC FIRE SPRINKLER SYSTEM YES/NO  
REVIEWED BY: [Signature] DATE: 5/28/09  
BASED ON THE 2003 NFPA-1 UNIFORM FIRE CODE

**ONSITE SEWER**

ALL ON SITE SEWER SYSTEM IS PRIVATE AND SHALL BE PRIVATELY MAINTAINED.

**SEWER CONTRIBUTION**

Avg. Flow = 0.0725 MGD = (414 UNITS) x (175 GPD) x (.000001 MGD/GPD)  
Peak Flow = 0.2483 MGD = (3.4 Peak Factor) x (0.0725 MGD)

**FIRE WATER AT DOMESTIC WATER CROSSINGS**

ALL NON-POTABLE FIRE WATER LINES CROSSING POTABLE DOMESTIC WATER LINES ARE TO BE INSTALLED WITH A VERTICAL SEPARATION NO LESS THAN SIX INCHES... AND IN ACCORDANCE WITH UDACS 2.20.01, 2.04.05, 2.19.02.B1, 2.19.02.B2.

**GENERAL NOTES**

- THIS PROPERTY MAY HAVE STATIC WATER PRESSURE IN EXCESS OF 80 P.S.I. THE UNIFORM PLUMBING CODE REQUIRES THAT INDIVIDUAL, ON-SITE (PRIVATE), PRESSURE REDUCING VALVES BE INSTALLED WHENEVER THE PRESSURE EXCEEDS 80 P.S.I. P.R.V.'S ARE THE DEVELOPER'S RESPONSIBILITY AND WILL NOT BE INSPECTED OR NOT INCLUDED IN THE ACCEPTANCE OF LIVWD FACILITIES. WATER & SEWER ARE PUBLIC UTILITIES, THE INTERIOR.
- ALL PRIVATE STREETS AND PRIVATE DRIVES ARE P.U.E.S., AND PUBLIC DRAINAGE EASEMENTS TO BE PRIVATELY MAINTAINED BY HOA.
- CONTRACTOR TO MAINTAIN MINIMUM 24" COVER OVER WATER LINES DURING CONSTRUCTION OPERATIONS.
- INSTALL PIPELINE MARKER BALLS IN TRENCH ABOVE EACH HORIZONTAL ELBOW FITTING, PER UDACS PLATE 27.
- ALL SEWER/STORM DRAINS CROSSING WATER LINES MUST CONFORM TO SECTION 2.19 OF THE UNIFORM DESIGN AND CONSTRUCTION STANDARDS FOR POTABLE WATER SYSTEMS (UDACS) FOR WATER AND STORM MAIN CROSSINGS AND CLEARANCES.
- VERIFY ALL STREET NAMES, LOT NUMBERS, AND BLOCK NUMBERS WITH FINAL MAP.
- ALL ON-SITE SEWER AND WATER ARE PRIVATE, TO BE PRIVATELY MAINTAINED.
- ALL NON-POTABLE FIRE WATER LINES CROSSING POTABLE DOMESTIC WATER LINES ARE TO BE INSTALLED WITH A VERTICAL SEPARATION NO LESS THAN SIX INCHES... AND IN ACCORDANCE WITH UDACS 2.20.01, 2.04.05, 2.19.02.B1, 2.19.02.B2.

**NOTE TO CONTRACTOR**

REFER TO IRRIGATION PLANS BY IMA DESIGN FOR SLEEVES LOCATIONS AND SIZES.

**NOTE**

- ALL ABOVE GROUND UTILITY APPURTENANCES SHALL CONFORM TO THE REQUIREMENTS OF TITLE 19.12.040
- METERS MUST BE SET IN A HORIZONTAL POSITION. ATLEAST EIGHT (8) DIAMETERS OF STRAIGHT PIPE ARE REQUIRED AT THE INLET END.

**WATER MAIN JOINT DEFLECTION (PVC, 4"-24")**

PVC PIPE SHALL BE DEFLECTED AT THE JOINT ONLY. THE MAXIMUM ALLOWABLE DEFLECTION SHALL BE ONE (1) DEGREE PER JOINT WITH A MINIMUM RADIUS OF CURVATURE OF 1,150 FEET, PER UDACS 2.08.01 AND 2.08.02.

FOR CHANGES IN DIRECTION EXCEEDING THE MAXIMUM ALLOWABLE JOINT DEFLECTION, FITTINGS SHALL BE USED.

**ABANDONED VALVES CUT AND CAP**

ALL VALVES TO BE ABANDONED SHALL BE ABANDONED IN THE CLOSED POSITION, UNLESS SHOWN OTHERWISE, BY REMOVING A MINIMUM OF THE TOP TWENTY-FOUR (24) INCHES OF THE VALVE BOX, AND THEN FILLING THE BOTTOM OF THE BOX WITH A MINIMUM OF EIGHT (8) INCHES OF SAND OR TYPE II AGGREGATE BASE. THE REMAINING PORTION OF THE VALVE BOX SHALL BE FILLED WITH CONCRETE HAVING A COMPRESSIVE STRENGTH OF AT LEAST TWO THOUSAND (2,000) PSI. THE LATERAL MUST BE CUT WITHIN THREE (3) FEET OF THE ABANDONED VALVE, OR AS SHOWN ON PLANS, AND CAPPED. THE CONTRACTOR SHALL CUT THE EXISTING PIPE WHERE SHOWN ON THE DRAWING AND INSTALL A CAP COMPLETE WITH THRUST BLOCK, WHERE A JOINT OR COUPLING IN THE EXISTING PIPE IS UNCOVERED AT THE CUT AND CAP LOCATIONS, THE INSTALLATION OF A PLUG MAY BE PERMITTED WITH DISTRICT APPROVAL. A CONCRETE THRUST BLOCK SHALL BE INSTALLED AT ALL CAP OR PLUG LOCATIONS IN ACCORDANCE WITH THE PROVISIONS OF UDACS PLATE 5.

**SERVICE LATERALS**

SERVICE LATERALS FOR LOTS WILL BE TAPPED ON EXISTING MAIN BY OWNER'S CONTRACTOR UNDER DIRECTION OF THE LWWD.

**BENCHMARK**

ONLY BENCHMARK: BLV90 30W4 NAVD 88v.2002 ELEVATION 834.6354 (METERS), 2738.50 (FEET). R/VET AND PLATE IN CONCRETE PAD (ELEC) NE CORNER OF HUALAPAI & TROPICAL PARKWAY.

**EXISTING UTILITIES**

EXISTING UTILITY LOCATIONS SHOWN HEREIN ARE APPROXIMATE ONLY. IT SHALL BE THE CONTRACTOR'S RESPONSIBILITY TO DETERMINE THE EXACT VERTICAL AND HORIZONTAL LOCATION OF ALL EXISTING UNDERGROUND UTILITIES PRIOR TO COMMENCING CONSTRUCTION. NO REPRESENTATION IS MADE THAT ALL EXISTING UTILITIES ARE SHOWN HEREON. THE ENGINEER ASSUMES NO RESPONSIBILITY FOR UTILITIES NOT SHOWN OR UTILITIES NOT SHOWN IN THEIR PROPER LOCATION.

CALL BEFORE YOU DIG: 1-800-227-2800.

**UTILITY LEGEND**

EX 8" W	EXISTING WATER LINE W/SIZE
4" PVC WIR	EXISTING GATE VALVE
8" PVC WIR	PROPOSED DOMESTIC WATER LINE W/SIZE
[Symbol]	PROPOSED FIRE WATER LINE W/SIZE
[Symbol]	PROPOSED DCCA
[Symbol]	PROPOSED RPPA
[Symbol]	PROPOSED WATER METER AND VAULT
[Symbol]	PROPOSED FIRE HYDRANT ASSEMBLY PER UDACS PLATE 7
EX 8" SS	EXISTING SEWER LINE W/SIZE
8" SS	EXISTING SEWER MANHOLE
[Symbol]	PROPOSED SEWER LATERAL
[Symbol]	PROPOSED SEWER LINE W/SIZE
[Symbol]	PROPOSED SEWER MANHOLE
[Symbol]	0" LIP DRIVEWAY OR HANDICAP PARKING
[Symbol]	REDUCER
[Symbol]	INSTALL NEVADA POWER RS-33 OR EQUAL

**WATER FITTINGS LEGEND**

[1] FIRE HYDRANT ASSEMBLY PER UDACS PLATE 7	[21] 12"x3" REDUCER
[2] 8" DCCA PER UDACS PLATE 11C	[22] 10"x10" TEE
[3] 3" TURBINE METER AND VAULT PER UDACS PLATE 18A AND DWG. C-475	[23] 10"x8" TEE
[4] 4" RPPA PER UDACS PLATE 11C	[24] 12"x12" MJ TAPPING SLEEVE WITH 12" TAPPING VALVE PER UDACS PLATE NO. 8 & 22
[5] 12"x2" SERVICE SADDLE PER UDACS PLATE NOT 1D	[25] 4" STUB PER UDACS PLATE NO. 5
[6] 8"x8" TEE	[26] 2" IRRIGATION METER PER UDACS 1D
[7] 10"x8" TEE	[27] 2" 90° BEND
[8] 12"x10" TEE	[28] 12"x12" TEE
[9] 10" 90° BEND	[29] 12"x8" REDUCER
[10] 10" 45° BEND	[30] 8"x4" REDUCER
[11] 8" 90° BEND	[31] 4"x3" REDUCER
[12] 8" 45° BEND	[32] 12" GATE VALVE
[13] 8" TEE	[33] 2" RPPA PER UDACS PLATE NO. 11A
[14] 4" GATE VALVE	[34] 2" STUB
[15] 4" 90° BEND	[35] 12" OUT-IN ISOLATION VALVE
[16] 4" 45° BEND	[36] 8" GATE VALVE
[17] 4" TEE	[37] 10" GATE VALVE
[18] 8"x8" 90° BEND	[38] 8" GATE VALVE
[19] 10"x8" REDUCER	[39] 12"x8" TAPPING SLEEVE AND 8" GATE VALVE
[20] 8" STUB	[40] FIRE HYDRANT ASSEMBLY PER UDACS PLATE 7 CONDITION A

CALL BEFORE YOU DO UNDERGROUND - AVOID HITTING UNDERGROUND TRAFFIC SIGNAL SYSTEMS AND STREET LIGHT SYSTEM CONDUITS-IT'S COSTLY

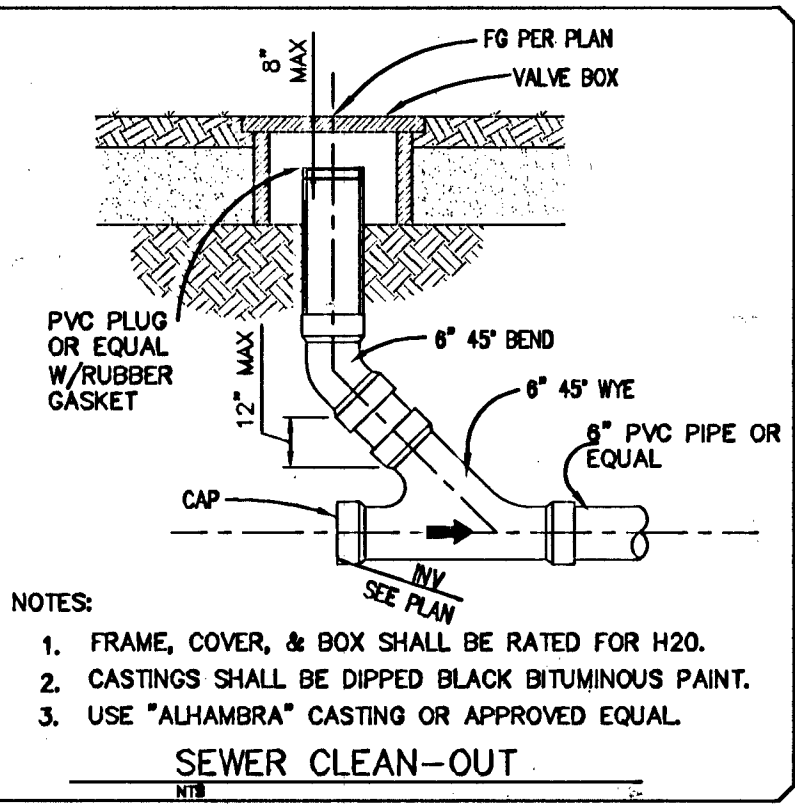
Call before you Dig - AVOID CUTTING UNDERGROUND UTILITY LINES. IT'S COSTLY.

Call before you undergound - 1-702-432-5300 FRESHLY ARTERIAL SYSTEM TRANSPORTATION F.A.S.T. AVOID CUTTING UNDERGROUND UTILITY LINES. IT'S COSTLY.

Call before you OVERHEAD - 1-702-227-2929 AVOID OVERHEAD POWER LINE CONTACT. IT'S COSTLY.

Call before you undergound - 1-702-432-5300 FRESHLY ARTERIAL SYSTEM TRANSPORTATION F.A.S.T. AVOID CUTTING UNDERGROUND UTILITY LINES. IT'S COSTLY.

Call before you OVERHEAD - 1-702-227-2929 AVOID OVERHEAD POWER LINE CONTACT. IT'S COSTLY.



**APPROVALS**

[Signature] DATE: 5/28/09

Stantec Consulting Inc.  
7251 West Charleston Boulevard  
Las Vegas, NV 89117  
Tel: 702.258.0115  
Fax: 702.258.4956  
www.stantec.com

**Stantec**

The Contractor shall verify and be responsible for all dimensions. DO NOT make the drawings - any errors or omissions are the responsibility of the Contractor. Copyright © 2009 Stantec Consulting Inc. All rights reserved. This document is the property of Stantec Consulting Inc. and is not to be distributed or used for any other purpose other than that authorized by Stantec Consulting Inc.

Revised Layout to Add Meter Power Transformer and Related Gate Sump

By: [Signature] Appd. [Signature] Y:MM/DD

Revision: 1/15/09

Client/Project: FAIRFIELD CENTENNIAL, LLC

CENTENNIAL CONDOMINIUMS  
CITY OF LAS VEGAS, NV

UTILITY PLANS

Permit-Seal

FOR REVISION 5 ONLY

Professional Engineer Seal: CHRISTOPHER ZHANG, Exp. 6-30-10, CIVIL

Project Number: 188100435  
File Name: 00435e-101.tbl.dwg

DWN: [Signature] CHKD: [Signature] DSSN: [Signature] DATE: 5/28/2009  
EA/NW: [Signature] SA/NW: [Signature] EA/NW: [Signature]

Drawing No. U7  
CLW# 107Y4967

Revision Sheet

H26047