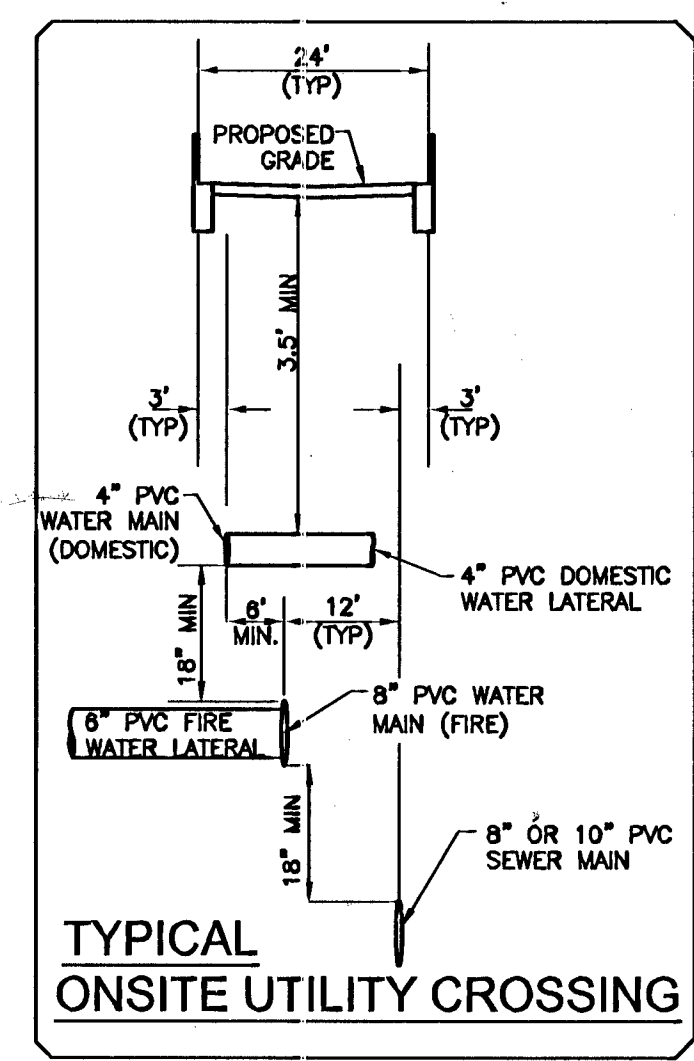
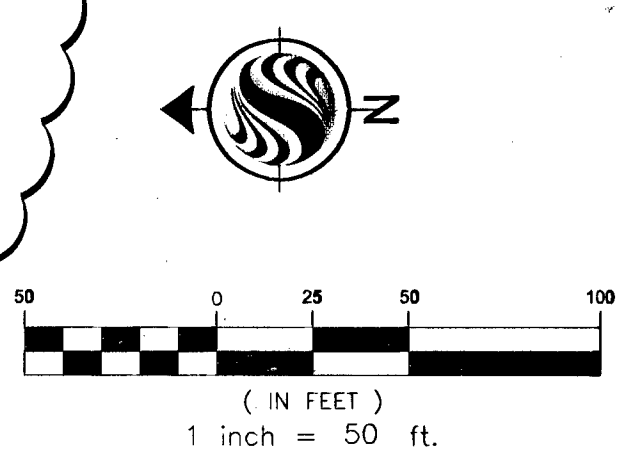
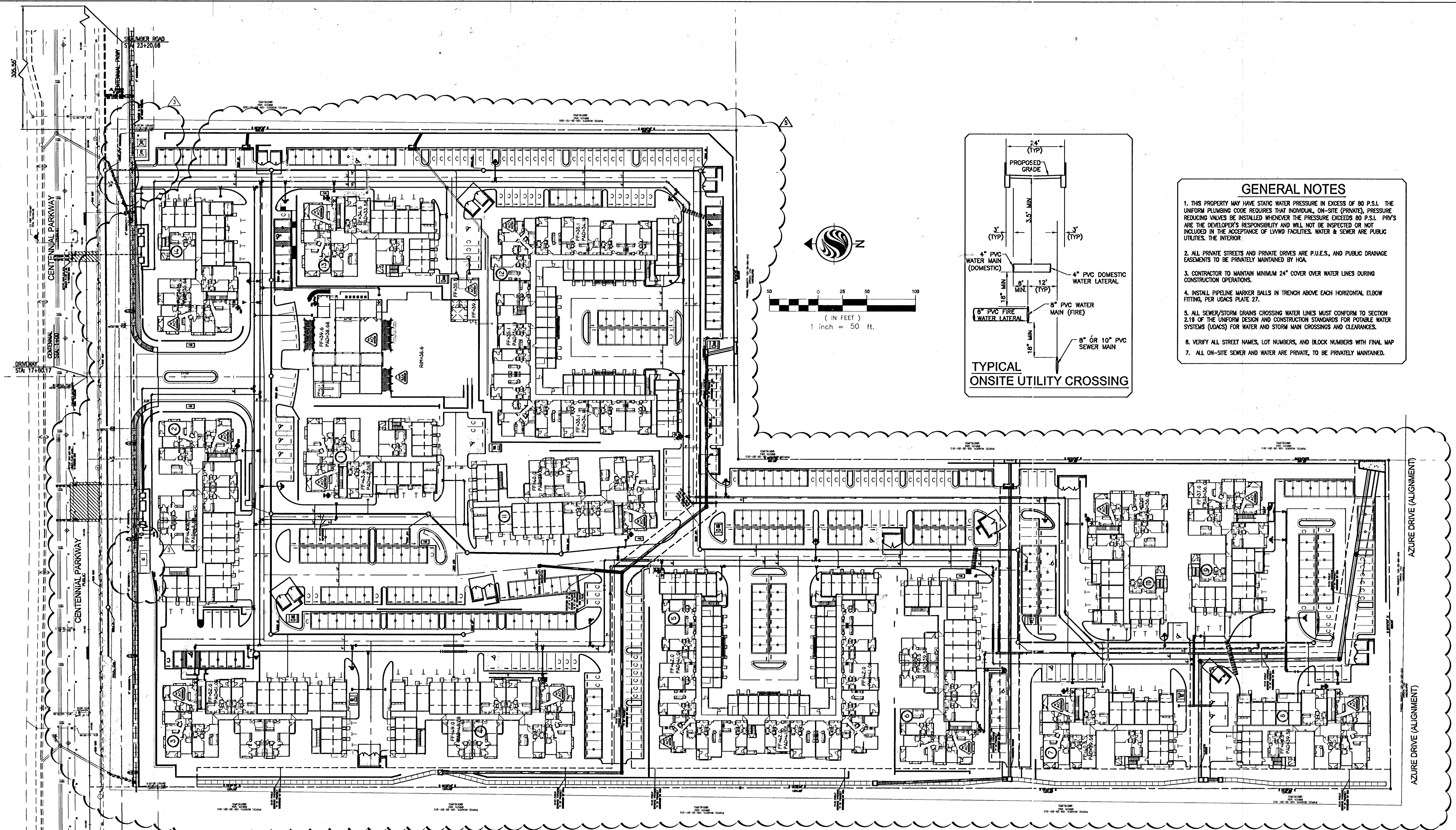




REVISION
 1. REVISION
 2. REVISION
 3. REVISION
 4. REVISION
 5. REVISION
 6. REVISION
 7. REVISION
 8. REVISION
 9. REVISION
 10. REVISION
 11. REVISION
 12. REVISION
 13. REVISION
 14. REVISION
 15. REVISION
 16. REVISION
 17. REVISION
 18. REVISION
 19. REVISION
 20. REVISION
 21. REVISION
 22. REVISION
 23. REVISION
 24. REVISION
 25. REVISION
 26. REVISION
 27. REVISION
 28. REVISION
 29. REVISION
 30. REVISION
 31. REVISION
 32. REVISION
 33. REVISION
 34. REVISION
 35. REVISION
 36. REVISION
 37. REVISION
 38. REVISION
 39. REVISION
 40. REVISION
 41. REVISION
 42. REVISION
 43. REVISION
 44. REVISION
 45. REVISION
 46. REVISION
 47. REVISION
 48. REVISION
 49. REVISION
 50. REVISION
 51. REVISION
 52. REVISION
 53. REVISION
 54. REVISION
 55. REVISION
 56. REVISION
 57. REVISION
 58. REVISION
 59. REVISION
 60. REVISION
 61. REVISION
 62. REVISION
 63. REVISION
 64. REVISION
 65. REVISION
 66. REVISION
 67. REVISION
 68. REVISION
 69. REVISION
 70. REVISION
 71. REVISION
 72. REVISION
 73. REVISION
 74. REVISION
 75. REVISION
 76. REVISION
 77. REVISION
 78. REVISION
 79. REVISION
 80. REVISION
 81. REVISION
 82. REVISION
 83. REVISION
 84. REVISION
 85. REVISION
 86. REVISION
 87. REVISION
 88. REVISION
 89. REVISION
 90. REVISION
 91. REVISION
 92. REVISION
 93. REVISION
 94. REVISION
 95. REVISION
 96. REVISION
 97. REVISION
 98. REVISION
 99. REVISION
 100. REVISION



- GENERAL NOTES**
1. THIS PROPERTY MAY HAVE STATIC WATER PRESSURE IN EXCESS OF 80 P.S.I. THE UNIFORM PLUMBING CODE REQUIRES THAT INDIVIDUAL, ON-SITE (PRIVATE), PRESSURE REDUCING VALVES BE INSTALLED WHENEVER THE PRESSURE EXCEEDS 80 P.S.I. PRIVATE VALVES ARE THE DEVELOPER'S RESPONSIBILITY AND WILL NOT BE INSPECTED OR NOT INCLUDED IN THE ACCEPTANCE OF LVWD FACILITIES. WATER & SEWER ARE PUBLIC UTILITIES. THE INTERIOR.
 2. ALL PRIVATE STREETS AND PRIVATE DRIVES ARE P.U.E.S., AND PUBLIC DRAINAGE EASEMENTS TO BE PRIVATELY MAINTAINED BY HOA.
 3. CONTRACTOR TO MAINTAIN MINIMUM 24" COVER OVER WATER LINES DURING CONSTRUCTION OPERATIONS.
 4. INSTALL PIPELINE MARKER BALLS IN TRENCH ABOVE EACH HORIZONTAL ELBOW FITTING, PER UDACS PLATE 27.
 5. ALL SEWER/STORM DRAINS CROSSING WATER LINES MUST CONFORM TO SECTION 2.19 OF THE UNIFORM DESIGN AND CONSTRUCTION STANDARDS FOR POTABLE WATER SYSTEMS (UDACS) FOR WATER AND STORM MAIN CROSSINGS AND CLEARANCES.
 6. VERIFY ALL STREET NAMES, LOT NUMBERS, AND BLOCK NUMBERS WITH FINAL MAP.
 7. ALL ON-SITE SEWER AND WATER ARE PRIVATE, TO BE PRIVATELY MAINTAINED.

ABANDONED VALVES
 ALL VALVES TO BE ABANDONED SHALL BE ABANDONED IN THE CLOSED POSITION, UNLESS SHOWN OTHERWISE BY REMOVING A MINIMUM OF THE TOP TWENTY-FOUR (24) INCHES OF THE VALVE BOX, AND THEN FILLING THE BOTTOM OF THE BOX WITH A MINIMUM OF EIGHT (8) INCHES OF SAND OR TYPE II AGGREGATE BASE. THE REMAINING PORTION OF THE VALVE BOX SHALL BE FILLED WITH CONCRETE HAVING A COMPRESSIVE STRENGTH OF AT LEAST TWO THOUSAND (2,000) PSI.

RELOCATION OF FIRE HYDRANTS
 STATION: 51+31.19 - MONTE VISO DR.
 THE CONTRACTOR SHALL REMOVE AND RELOCATE BOTH THE UPPER AND LOWER BARRELS OF THE EXISTING FIRE HYDRANT WHERE SHOWN, REDUCE THE EXISTING LATERAL AS REQUIRED, AND REINSTALL SUCH HYDRANT AT THE NEW LOCATION INDICATED. FIRE HYDRANTS SHALL BE TESTED PRIOR TO AND AFTER RELOCATION, UNDER THE DIRECTION OF THE DISTRICT, TO INSURE QUALITY. INSTALLATION SHALL BE IN ACCORDANCE WITH UDACS PLATE 7. LATERALS MADE OF UNAPPROVED MATERIALS SHALL BE REPLACED FROM THE MAIN TO THE FIRE HYDRANT. RELOCATIONS WHERE THE LATERAL CANNOT BE EXTENDED SHALL BE TREATED AS NEW INSTALLATIONS.

DOUBLE CHECK DETECTOR ASSEMBLY (DCDA) (2) 8"
 THE DOUBLE CHECK DETECTOR ASSEMBLIES SHALL BE INSTALLED IN ACCORDANCE WITH THE UDACS PLATE NO. 11C. ANY BLOCK WALL OR OTHER FENCE MATERIAL SHALL BE DESIGNED AND CONSTRUCTED AROUND THE OUTSIDE OF THE EASEMENT(S) SO AS TO ALLOW THE DISTRICT DIRECT ACCESS FROM THE ADJACENT RIGHT-OF-WAY. EASEMENTS SHALL BE CLEARLY MARKED OR STAKED PRIOR TO THE START OF CONSTRUCTION.

EXISTING UTILITIES
 EXISTING UTILITY LOCATIONS SHOWN HEREIN ARE APPROXIMATE ONLY. IT SHALL BE THE CONTRACTOR'S RESPONSIBILITY TO DETERMINE THE EXACT VERTICAL AND HORIZONTAL LOCATION OF ALL EXISTING UNDERGROUND UTILITIES PRIOR TO COMMENCING CONSTRUCTION. NO REPRESENTATION IS MADE THAT ALL EXISTING UTILITIES ARE SHOWN HEREON. THE ENGINEER ASSUMES NO RESPONSIBILITY FOR UTILITIES NOT SHOWN OR UTILITIES NOT SHOWN IN THEIR PROPER LOCATION.
 CALL BEFORE YOU DIG: 1-800-227-2600.

WATER MAIN JOINT DEFLECTION (PVC, 4"-24")
 PVC PIPE SHALL BE DEFLECTED AT THE JOINT ONLY. THE MAXIMUM ALLOWABLE DEFLECTION SHALL BE ONE (1) DEGREE PER JOINT WITH A MINIMUM RADIUS OF CURVATURE OF 1,150 FEET, PER UDACS 2.08.01 AND 2.08.02. FOR CHANGES IN DIRECTION EXCEEDING THE MAXIMUM ALLOWABLE JOINT DEFLECTION, FITTINGS SHALL BE USED.

BENCHMARK
 CLV BENCHMARK: BLV90 30W# NVD 88v.2002 ELEVATION 834.6354 (METERS), 2738.30 (FEET).
 RIVET AND PLATE IN CONCRETE PAD (ELEC) NE CORNER OF HUALAPAI & TROPICAL PARKWAY.

Call before you Dig
 1-702-432-5300
 FREEMAN ARTERIAL SYSTEM TRANSPORTATION F.A.S.T.
 AVOID CUTTING UNDERGROUND UTILITY LINES. IT'S COSTLY.

Call before you Dig
 1-800-227-2600
 AND
 CLARK COUNTY TRAFFIC OPERATIONS
 1-702-455-7544

UTILITY LEGEND

EX 8" W	EXISTING WATER LINE W/SIZE
EX 8" WTR	EXISTING GATE VALVE
4" PVC WTR	PROPOSED DOMESTIC WATER LINE W/SIZE
8" PVC WTR	PROPOSED FIRE WATER LINE W/SIZE
DCDA	PROPOSED DCDA
RPRA	PROPOSED RPRA
WTR MTR	PROPOSED WATER METER AND VALVE
FH PLATE	PROPOSED FIRE HYDRANT ASSEMBLY PER UDACS PLATE 7
EX 8" SS	EXISTING SEWER LINE W/SIZE
EX 8" SS	EXISTING SEWER MANHOLE
8" SS	PROPOSED SEWER LATERAL
8" SS	PROPOSED SEWER LINE W/SIZE
8" SS	PROPOSED SEWER MANHOLE
10" W	4" LIP DRIVEWAY OR HANDICAP PARKING REDUCER

REDUCED PRESSURE PRINCIPLE ASSEMBLY (1) 2" (2) 4"
 APPROVED REDUCED PRESSURE PRINCIPLE ASSEMBLY(S) SHALL BE INSTALLED PER THE UDACS PLATE NO. 11A. NO WATER SHALL BE TAKEN FROM A SERVICE REQUIRING BACKFLOW PREVENTION UNTIL THE REDUCED PRESSURE PRINCIPLE ASSEMBLY HAS BEEN SUCCESSFULLY TESTED BY THE LVWD. ANY BLOCK WALL OR OTHER FENCE MATERIAL SHALL BE DESIGNED AND CONSTRUCTED AROUND THE OUTSIDE OF THE EASEMENT(S) TO ALLOW THE DISTRICT DIRECT ACCESS FROM THE ADJACENT RIGHT-OF-WAY.

APPROVALS

[Signature]
 CITY FIRE MARSHAL
 DATE: 5/28/09

[Signature]
 1st App'd. 7/1/08
 LAS VEGAS VALLEY WATER DISTRICT (PROJECT # 05047)
 DATE: 6/1/09

Client/Project: FAIRFIELD CENTENNIAL, LLC
 CENTENNIAL CONDOMINIUMS
 CITY OF LAS VEGAS, NV
 MASTER UTILITY PLAN

Permit-Seal
 Project Number: 188100435
 File Name: 00435c-101.mutl.dwg
 DWN: CHKD: DSGN: DATE: 5/28/2009
 EA/NW: SA: EA/NW: DATE: 5/28/2009
 Drawing No: MU
 CLV#: 107Y4967
 Revision: Sheet
 0 40 of 52