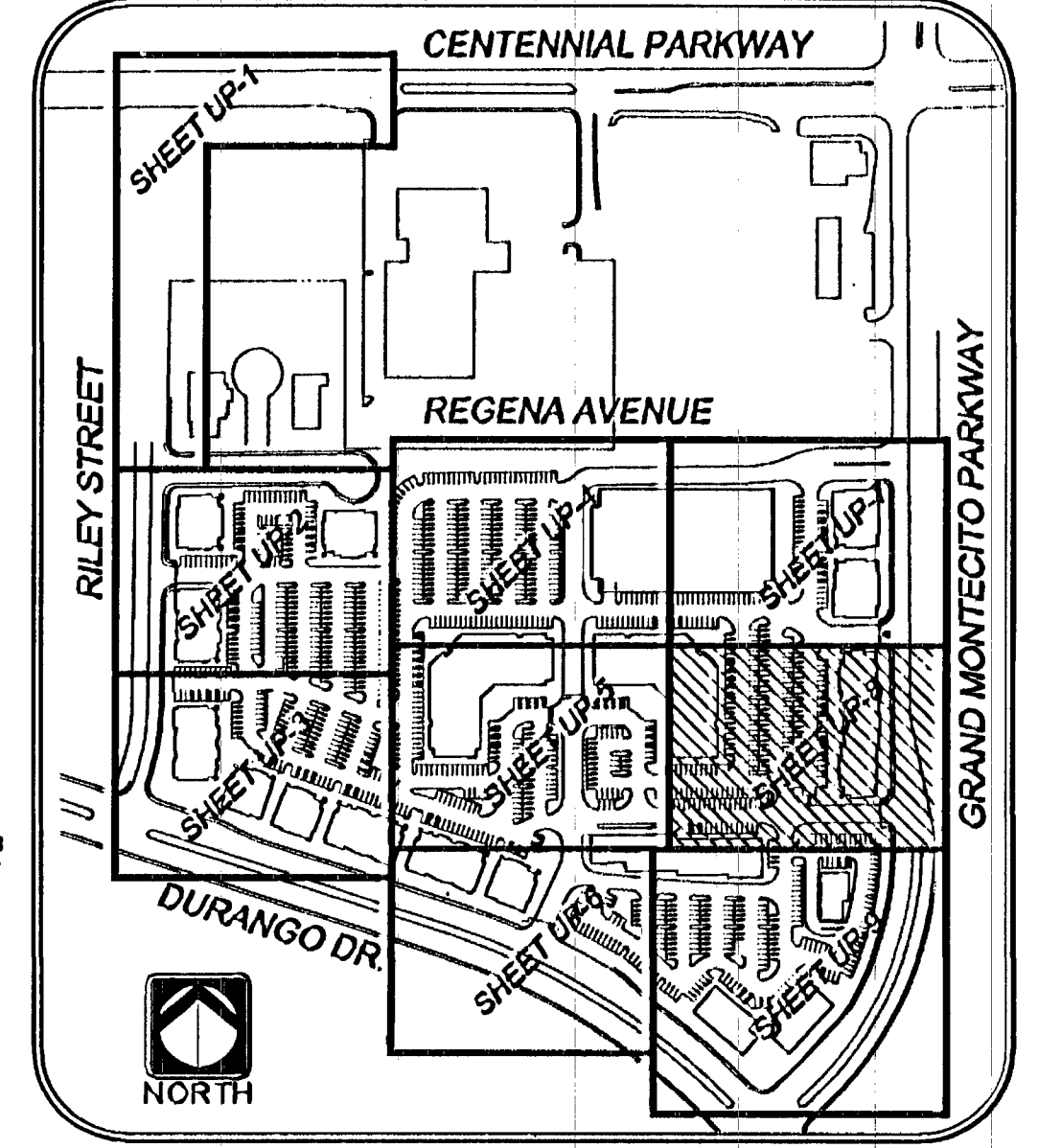
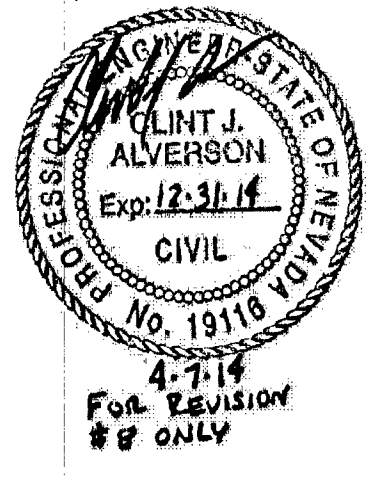
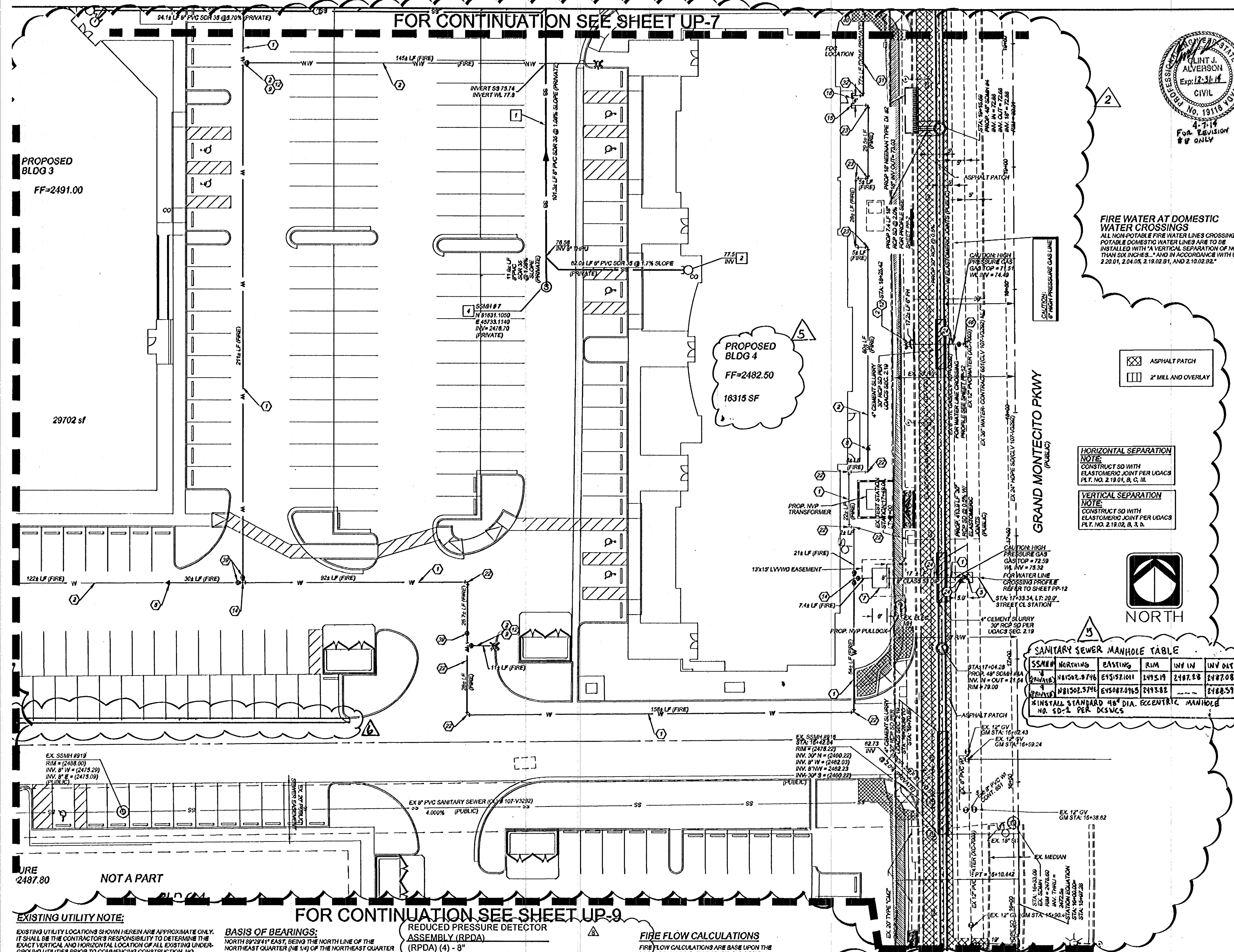


FOR CONTINUATION SEE SHEET UP-7

PROPOSED BLDG 3
FF=2491.00

PROPOSED BLDG 4
FF=2482.50
16315 SF



FIRE WATER AT DOMESTIC WATER CROSSINGS
ALL NON-POTABLE FIRE WATER LINES CROSSING POTABLE DOMESTIC WATER LINES ARE TO BE INSTALLED WITH A VERTICAL SEPARATION OF NO LESS THAN SIX INCHES... AND IN ACCORDANCE WITH UDACS 2.20.01, 2.04.05, 2.19.02.B1, AND 2.10.02.B2.

ASPHALT PATCH
2" MILL AND OVERLAY

HORIZONTAL SEPARATION NOTE:
CONSTRUCT SD WITH ELASTOMERIC JOINT PER UDACS PLT. NO. 2.19.01, B, C, III.

VERTICAL SEPARATION NOTE:
CONSTRUCT SD WITH ELASTOMERIC JOINT PER UDACS PLT. NO. 2.19.02, B, 3, D.



GRAND MONTECITO PKWY (PUBLIC)

SANITARY SEWER MANHOLE TABLE

| SSMH # | NORTHING | EASTING | RIM | INV IN | INV OUT | TYPE |
|--------|------------|------------|---------|---------|---------|---|
| 1 | 81502.5716 | 64508.0165 | 2493.82 | 2488.51 | 2488.51 | INSTALL STANDARD 48" DIA. ECCENTRIC MANHOLE NO. SD-1 PER DCSWCS |

EXISTING UTILITY NOTE:
EXISTING UTILITY LOCATIONS SHOWN HEREIN ARE APPROXIMATE ONLY. IT SHALL BE THE CONTRACTOR'S RESPONSIBILITY TO DETERMINE THE EXACT VERTICAL AND HORIZONTAL LOCATION OF ALL EXISTING UNDERGROUND UTILITIES PRIOR TO COMMENCING CONSTRUCTION. NO REPRESENTATION IS MADE THAT ALL EXISTING UTILITIES ARE SHOWN HEREON. THE ENGINEER ASSUMES NO RESPONSIBILITY FOR UTILITIES NOT SHOWN OR UTILITIES NOT SHOWN IN THEIR PROPER LOCATION. ALL DISCREPANCIES MUST BE IMMEDIATELY REPORTED TO THE ENGINEER. CALL BEFORE YOU DIG: 1-800-227-2600.

BASIS OF BEARINGS:
NORTH 89°29'41" EAST, BEING THE NORTH LINE OF THE NORTHEAST QUARTER (NE 1/4) OF SECTION 28, TOWNSHIP 19 SOUTH, RANGE 09 EAST, M.D.M. AS DEFINED BY THE NEVADA COORDINATE SYSTEM OF 1983 (NCS83), EAST ZONE, AS DETERMINED BY PUBLISHED VALUES BY THE NATIONAL GEODETIC SURVEY FOR THE LAS VEGAS VALLEY WATER DISTRICT CONTINUOUSLY OPERATING REFERENCE STATIONS: NVCS (CARLTON SQUARE), LVWD (MAIN NVT) (BENCHMARK)
BLV90 20C4: RIVET & PLATE IN CONCRETE PAD (TELEPHONE EQUIPMENT) AT THE NORTHEAST CORNER OF TROPICAL PARKWAY AND EL CAPITAN HWY = 770.5491m = 2528.04m
PROJECT DATUM UTM
2528.04 + 0.40 = 2528.44 PROJECT DATUM

REDUCED PRESSURE DETECTOR ASSEMBLY (RPDA)
(RPDA) (4) - 0"
THE REDUCED PRESSURE DETECTOR ASSEMBLIES SHALL BE INSTALLED IN ACCORDANCE WITH THE UDACS PLATE NO. 58. NO WATER SHALL BE TAKEN FROM A SERVICE REQUIRING BACKFLOW PREVENTION UNTIL THE ASSEMBLY HAS BEEN SUCCESSFULLY TESTED BY LVWD. ANY BLOCK WALL OR OTHER FENCE MATERIAL SHALL BE DESIGNED AND CONSTRUCTED AROUND THE OUTSIDE OF THE EASEMENT(S) SO AS TO ALLOW LVWD DIRECT ACCESS FROM THE ADJACENT RIGHT-OF-WAY. EASEMENTS SHALL BE CLEARLY MARKED OR STAKED PRIOR TO THE START OF CONSTRUCTION.

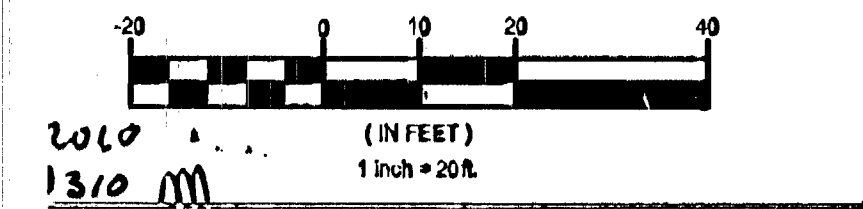
FIRE FLOW CALCULATIONS
FIRE FLOW CALCULATIONS ARE BASED UPON THE LARGEST BUILDING TYPE WHICH IS TYPE "A".
Fire Flow Requirement is 2,125 gallons per minute.
Based on:
BLDG 87,000
Largest area between 4-hour area separation walls: (8.7)
Building Height: (FT) 40
Number of Stories: (FLOORS) 3
Number of Units: N/A
Type of Construction: III-A
Full Automatic Fire Sprinkler Systems: Yes No

SANITARY SEWER MANHOLE TABLE

| SSMH # | NORTHING | EASTING | RIM | INV IN | INV OUT | TYPE |
|-------------------|-------------|-------------|---------|---------|---------|---|
| SSMH #1 (PUBLIC) | N81413.0007 | E45174.7234 | 2494.55 | 2485.29 | 2485.09 | INSTALL STANDARD 48" DIA. ECCENTRIC MANHOLE NO. SD-1 PER DCSWCS |
| SSMH #2 (PRIVATE) | N81480.2372 | E44583.8187 | 2496.13 | 2487.30 | 2487.10 | |
| SSMH #3 (PRIVATE) | N81553.8777 | E44778.1828 | 2498.17 | 2489.83 | 2489.63 | |
| SSMH #4 (PRIVATE) | N81598.4748 | E44745.3557 | 2500.31 | 2490.59 | 2490.09 | |
| SSMH #5 (PRIVATE) | N81943.0971 | E44745.0844 | 2508.54 | 2497.50 | 2497.50 | |
| SSMH #6 (PRIVATE) | N82024.3534 | E45731.5502 | 2488.11 | 2472.04 | 2472.04 | |
| SSMH #7 (PUBLIC) | N81831.1050 | E45733.1140 | 2482.28 | 2478.70 | 2478.70 | |

Call before you dig.
800-227-2600
NEVADA UNDERGROUND UTILITY SERVICE
Call before you dig. It's easy.
Call before you dig. It's easy.
Call before you dig. It's easy.

LEGAL DESCRIPTION
A PORTION OF THE E 1/2 OF THE NE 1/4 OF SECTION 29, TOWNSHIP 19 SOUTH, RANGE 09 EAST, M.D.M.
NOTE:
SEE HORIZONTAL CONTROL SHEET HC-1 THRU HC-7 FOR FIRE ACCESS LINES.

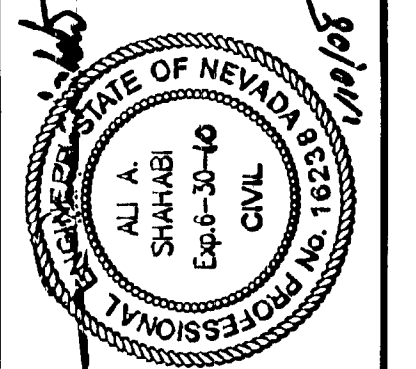


WATER NOTES

| No. | ITEM | UNIT | PUBLIC QUANTITY |
|-----|--|------|-----------------|
| 1 | INSTALL 8" PVC WATER LINE (PVM), PER UDACS PLATE No. 6A & 6B & 6C | LF | 389 |
| 2 | INSTALL 8" WATER LINE (PVM), PER UDACS PLATE No. 6A & 6B & 6C | LF | 142 |
| 3 | INSTALL 1" TAPPING VALVE PER UDACS PLATE No. 22 & 8 | EA | 2 |
| 4 | INSTALL 1" TURBINE METER PER UDACS PLT. No. 184 (WITH BYPASS) IN VALVE PROTECTION ASSEMBLY PER UDACS PLATE No. C-475 | EA | 2 |
| 5 | INSTALL 8" RPPA PER UDACS PLATE No. 110 | EA | 4 |
| 6 | INSTALL 8" TEE PER UDACS PLATE No. 5 | EA | 5 |
| 7 | INSTALL 4" 90° BEND PER UDACS PLATE No. 5 | EA | 2 |
| 8 | INSTALL 8" WATER LINE (DOM), PER UDACS PLATE No. 6B & 6C (PVC C-900, CL-150) | LF | - |
| 9 | INSTALL FIRE DEPARTMENT ASSEMBLY, INCLUDING GATE VALVE, PER UDACS PLATE No. 7 | EA | 5 |
| 10 | INSTALL 4" DUAL RPPA PER DETAIL & UDACS PLATE No. 110 | EA | 2 |
| 11 | INSTALL 8" TEE PER UDACS PLATE No. 5 | EA | 2 |
| 12 | INSTALL CAP AND BLOW OFF PER UDACS PLATE No. 8 FIRE SPRINKLER | EA | 15 |
| 13 | INSTALL 12" WATER LINE, PER UDACS PLATE No. 6A & 6B & 6C (PVC C-900, CL-150) | LF | 3,073 |
| 14 | INSTALL 8" - 22.5° BEND WITH THRUST BLOCK PER UDACS PLT. NO. 5 | EA | - |
| 15 | STUB AND CAP 2" WATER LINE | EA | - |
| 16 | INSTALL 4" 45° TEE PER UDACS PLATE No. 5 | EA | - |
| 17 | INSTALL 12" 90° BEND PER UDACS PLATE No. 5 | EA | - |
| 18 | STUB AND CAP 12" WATER LINE W/ 2" BLOW-OFF PER UDACS PLT. NO. 4A | EA | 4 |
| 19 | INSTALL 8" - 90° BEND WITH THRUST BLOCK PER UDACS PLT. NO. 5 | EA | - |
| 20 | INSTALL 8" - 90° BEND WITH THRUST BLOCK PER UDACS PLT. NO. 5 | EA | 3 |
| 21 | INSTALL 8" - 45° BEND WITH THRUST BLOCK PER UDACS PLT. NO. 5 | EA | 2 |
| 22 | INSTALL 4" - 45° BEND WITH THRUST BLOCK PER UDACS PLT. NO. 5 | EA | - |
| 23 | INSTALL 8" - 22.5° BEND WITH THRUST BLOCK PER UDACS PLT. NO. 5 | EA | - |
| 24 | INSTALL 4" - 22.5° BEND WITH THRUST BLOCK PER UDACS PLT. NO. 5 | EA | - |
| 25 | INSTALL 12" GATE VALVE PER UDACS PLATE No. 8 & 3 | EA | 9 |
| 26 | INSTALL 8" 4" REDUCER PER UDACS PLATE No. 5 | EA | 3 |
| 27 | INSTALL 2" WATER LINE (DOM), PER UDACS PLATE No. 6 | LF | 270 |
| 28 | INSTALL 2" 90° BEND PER UDACS PLATE No. 5 | EA | - |
| 29 | INSTALL 4" 45° TEE PER UDACS PLATE No. 5 | EA | - |
| 30 | INSTALL 2" 4" REDUCER PER UDACS PLATE No. 5 | EA | - |
| 31 | INSTALL 2" 22.5° BEND WITH THRUST BLOCK PER UDACS PLT. NO. 5 | EA | - |
| 32 | INSTALL 12" - 11.25° BEND WITH THRUST BLOCK PER UDACS PLT. NO. 5 | EA | 5 |
| 33 | INSTALL 12" - 45° BEND WITH THRUST BLOCK PER UDACS PLT. NO. 5 | EA | 10 |
| 34 | INSTALL 12" - 5° BEND RESTRAINED ON EACH END | EA | 1 |
| 35 | INSTALL 8" GATE VALVE PER UDACS PLATE No. 8 & 3 | EA | 8 |
| 36 | INSTALL FIRE DEPARTMENT CONNECTION | EA | - |
| 37 | INSTALL 8" 4" TEE PER UDACS PLATE No. 5 | EA | - |
| 38 | INSTALL 12" 4" TEE PER UDACS PLATE No. 5 | EA | 4 |
| 39 | INSTALL 12" WATER LINE, PER UDACS PLATE No. 6 (DIP, C-900) | EA | 81 |
| 40 | INSTALL 12" 12" CROSS PER UDACS PLATE No. 5 | EA | 2 |
| 41 | STUB AND CAP 8" WATER LINE W/ 2" BLOW-OFF PER UDACS PLT. NO. 4A | EA | 2 |
| 42 | INSTALL 12" 12" CROSS PER UDACS PLATE No. 5 | EA | 1 |
| 43 | INSTALL 8" 4" TAPPING VALVE PER UDACS PLATE No. 22 & 8 | EA | 8 |
| 44 | INSTALL 8" 4" REDUCER PER UDACS PLATE No. 5 | EA | 8 |

SEWER NOTES

| No. | ITEM | UNIT | QUANTITY |
|-----|---|------|----------|
| 1 | INSTALL 8" PVC SD333 SEWER LINE (PRIVATE) | LF | 1435 |
| 2 | INSTALL 8" PVC SEWER CLEANOUT 5' FROM BUILDING (PRIVATE) | EA | 15 |
| 3 | INSTALL 8" PVC SD 33 SEWER LATERAL PER SD-17 (PRIVATE) | LF | 143 |
| 4 | INSTALL SEWER MANHOLE PER SD-1 (PRIVATE) | EA | 7 |
| 5 | NOT USED | EA | - |
| 6 | INSTALL 8" PVC SEWER CLEANOUT (PRIVATE) SEE DETAIL 8 SHI DE-3 | EA | 5 |
| 7 | INSTALL SEWER MANHOLE PER SD-1 (PUBLIC) | EA | 2 |



| REV. | DATE | DESCRIPTION |
|------|---------|--|
| 1 | 3-11-14 | LVWD MODIFICATIONS |
| 2 | 3-11-14 | REMOVED WATER NOTES AND ADDED VALLEY CENTER |
| 3 | 5-1-14 | REMOVED SD-17 FROM PROJECT BENCHMARK AND DATUM & ADJUST UTILITY SPACING PER SD-17 COMMENTS |
| 4 | 1/16/14 | ADD TRANSFORMER PADS, ADD SEWER LATERAL, MARKED LVWD LINE |

Stantec

VENTURE CORPORATION
CENTENNIAL HILLS PROFESSIONAL CENTER
UTILITY PLAN

JOB # 052058.01
SHEET NO.:
UP-8
60 OF 87 SHEETS
CLV # 1074939

Call Southwest Gas at 365-2298 for Standby when excavating over or near High Pressure Gas Lines.

Reviewed By: [Signature] Date: 11/18/13
LAS VEGAS VALLEY WATER DISTRICT
LVWD PROJECT NUMBER: # 112352