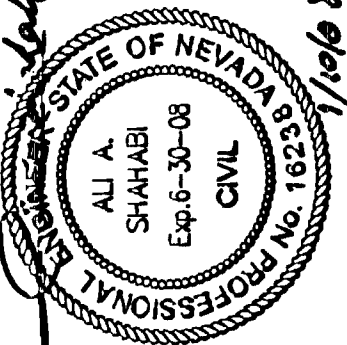
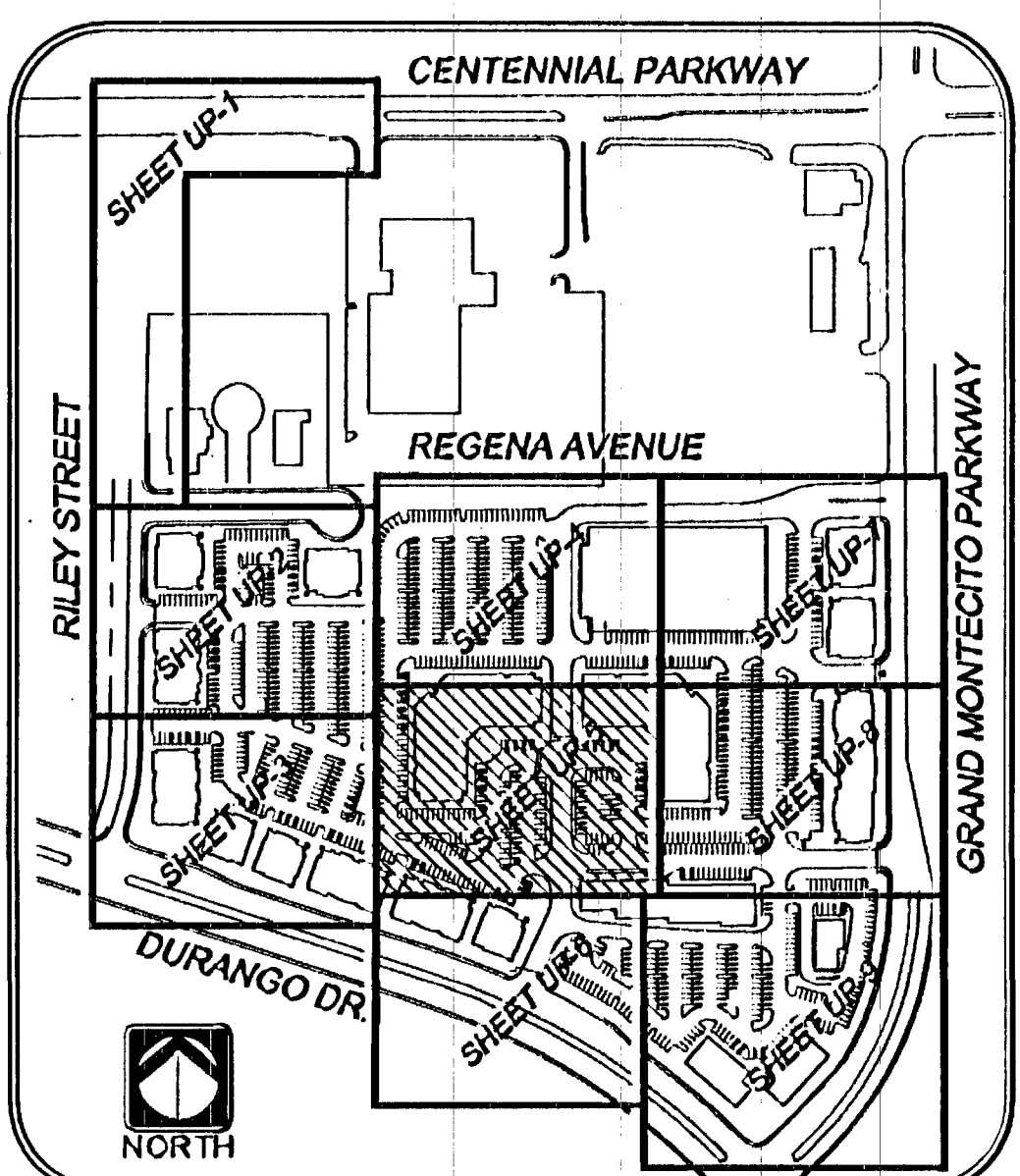
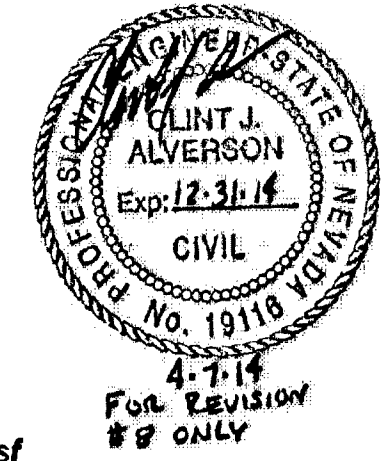


FOR CONTINUATION SEE SHEET UP-4

PROPOSED BLDG 5
FF=2495.00
29438 sf

PROPOSED BLDG 3
FF=2491.00
29702 sf



WATER NOTES

No.	ITEM	UNIT	PUBLIC QUANTITY
1	INSTALL 8" PVC WATER LINE (PPV), PER UDACS PLATE NO. 6A & 6B & 6C (PVC, C-200, CL-150)	LF	383
2	INSTALL 8" WATER LINE (PPV), PER UDACS PLATE NO. 6A & 6B & 6C (PVC, C-200, CL-150)	LF	142
3	INSTALL 12" RELASTO VALVE AND 1/2" BUNA FREE VALVE P.L.T. 10" N/A	EA	2
4	INSTALL 12" WATER LINE (DOM), PER UDACS PLATE NO. 8	LF	34
5	INSTALL 12"X8" TAPPING SLEEVE AND 8" TAPPING VALVE PER UDACS PLATE NO. 22 & 8	EA	8
6	INSTALL 4" TAPPING VALVE PER UDACS PLATE NO. 22 (WITH BYPASS) IN A VALVE PER UDACS PLATE NO. C-475	EA	2
7	INSTALL 8" RPPA PER UDACS PLATE NO. 110	EA	4
8	INSTALL 8"X6" REDUCER	EA	-
9	INSTALL 8"X6" TEE PER UDACS PLATE NO. 5	EA	5
10	INSTALL 4" 90° BEND PER UDACS PLATE NO. 5	EA	2
11	INSTALL 8" WATER LINE (DOM), PER UDACS PLATE NO. 6B & 6C (PVC, C-200, CL-150)	LF	-
12	INSTALL FIRE HYDRANT ASSEMBLY, INCLUDING GATE VALVE, PER UDACS PLATE NO. 7	EA	5
13	INSTALL 4" DUAL RPPA PER UDACS PLATE NO. 110	EA	2
14	INSTALL 8"X6" TEE PER UDACS PLATE NO. 5	EA	2
15	INSTALL CAP AND BLOW OFF PER UDACS PLATE 4A, FIRE SPRINKLER RISER CONNECTION, SEE FIRE PROTECTION PLANS FOR CONTINUATION	EA	15
16	INSTALL 12" WATER LINE, PER UDACS PLATE NO. 6A & 6B & 6C (PVC, C-200, CL-150)	LF	3,073
17	INSTALL 6" - 22.5" BEND WITH THRUST BLOCK PER UDACS PLT. NO. 5	EA	-
18	STUB AND CAP 2" WATER LINE	EA	-
19	INSTALL 4"X4" TEE PER UDACS PLATE NO. 5	EA	-
20	INSTALL 12" 90° BEND PER UDACS PLATE NO. 5	EA	-
21	STUB AND CAP 12" WATER LINE W/ 2" BLOW-OFF PER UDACS PLT. NO. 4A	EA	4
22	INSTALL 8" - 90° BEND WITH THRUST BLOCK PER UDACS PLT. NO. 5	EA	-
23	INSTALL 8" - 90° BEND WITH THRUST BLOCK PER UDACS PLT. NO. 5	EA	3
24	INSTALL 8" - 45° BEND WITH THRUST BLOCK PER UDACS PLT. NO. 5	EA	2
25	INSTALL 8" - 45° BEND WITH THRUST BLOCK PER UDACS PLT. NO. 5	EA	-
26	INSTALL 8" - 22.5° BEND WITH THRUST BLOCK PER UDACS PLT. NO. 5	EA	-
27	INSTALL 4" - 22.5° BEND WITH THRUST BLOCK PER UDACS PLT. NO. 5	EA	-
28	INSTALL 2" - 22.5° BEND WITH THRUST BLOCK PER UDACS PLT. NO. 5	EA	-
29	INSTALL 12" GATE VALVE PER UDACS PLATE NO. 8 & 3	EA	9
30	INSTALL 8"X4" REDUCER PER UDACS PLATE NO. 5	EA	5
31	INSTALL 2" WATER LINE (DOM), PER UDACS PLATE NO. 8	LF	170
32	INSTALL 2" 90° BEND PER UDACS PLATE NO. 5	EA	-
33	INSTALL 4"X4" TEE PER UDACS PLATE NO. 5	EA	-
34	INSTALL 2"X4" REDUCER PER UDACS PLATE NO. 5	EA	-
35	INSTALL 2"X2" TEE PER UDACS PLATE NO. 5	EA	-
36	INSTALL 12" - 11.25° BEND WITH THRUST BLOCK PER UDACS PLT. NO. 5	EA	5
37	INSTALL 12" - 45° BEND WITH THRUST BLOCK PER UDACS PLT. NO. 5	EA	10
38	INSTALL 12" - 5° BEND RESTRAINED ON EACH END	EA	1
39	INSTALL 8" GATE VALVE PER UDACS PLATE NO. 8 & 3	EA	6
40	INSTALL FIRE DEPARTMENT CONNECTION	EA	-
41	INSTALL 8"X6" TEE PER UDACS PLATE NO. 5	EA	-
42	INSTALL 12"X8" TEE PER UDACS PLATE NO. 5	EA	4
43	INSTALL 12" WATER LINE, PER UDACS PLATE NO. 8 (DIP, C-200)	EA	81
44	INSTALL 12"X12" CROSS PER UDACS PLATE NO. 5	EA	2
45	STUB AND CAP 8" WATER LINE W/ 2" BLOW-OFF PER UDACS PLT. NO. 4A	EA	2
46	INSTALL 12"X8" TAPPING SLEEVE AND 8" TAPPING VALVE PER UDACS PLATE NO. 22 & 8	EA	1
47	INSTALL 8"X4" REDUCER PER UDACS PLATE NO. 5	EA	0

SEWER NOTES

No.	ITEM	UNIT	QUANTITY
1	INSTALL 8" PVC SDR35 SEWER LINE (PRIVATE)	LF	1423
2	INSTALL 6" PVC SEWER CLEANOUT 5' FROM BUILDING (PRIVATE)	EA	15
3	INSTALL 8" PVC SDR 35 SEWER LATERAL PER SD-17 (PRIVATE)	LF	943
4	INSTALL SEWER MANHOLE PER SD-1 (PRIVATE)	EA	7
5	NOT USED	EA	-
6	INSTALL 6" PVC SEWER CLEANOUT (PRIVATE) SEE DETAIL 8 SHD DE-3	EA	5
7	INSTALL SEWER MANHOLE PER SD-1 (PUBLIC)	EA	2

SANITARY SEWER MANHOLE TABLE

SSMH #	NORTHING	EASTING	RLM	INV IN	INV OUT	TYPE
SSMH #1 (PUBLIC)	N81413.0307	E45174.7234	2494.55	2489.29	2485.09	INSTALL STANDARD 48" DIA. ECCENTRIC MANHOLE NO. SD-1 PER DCSWCS
SSMH #2 (PRIVATE)	N81400.2372	E44583.2187	2494.19	2487.30	2487.10	
SSMH #3 (PRIVATE)	N81555.8777	E44778.1628	2495.57	2489.83	2489.83	
SSMH #4 (PRIVATE)	N81584.4748	E44745.3537	2500.39	2490.59	2490.09	
SSMH #5 (PRIVATE)	N81943.0971	E44745.0844	2503.54	---	2487.30	
SSMH #6 (PUBLIC)	N82084.3534	E45731.3502	2484.11	2472.04	71.84	
SSMH #7 (PRIVATE)	N81831.1050	E45733.1140	2482.28	---	2478.70	
SSMH #8 (PUBLIC)	N81502.5796	E45157.1011	1493.19	1487.18	1487.08	
SSMH #9 (PUBLIC)	N81501.9796	E45087.0945	1493.82	---	2488.51	

NOTE: SEE HORIZONTAL CONTROL SHEET HC-1 THRU HC-7 FOR FIRE ACCESS LANES.
FIRE WATER AT DOMESTIC WATER CROSSINGS ALL NON-POTABLE FIRE WATER LINES CROSSING POTABLE DOMESTIC WATER LINES ARE TO BE INSTALLED WITH A VERTICAL SEPARATION OF NO LESS THAN SIX INCHES, AND IN ACCORDANCE WITH UDACS 2.22.01, 2.04.05, 2.19.02.B1, AND 2.10.02.B2.

EXISTING UTILITY NOTE:

EXISTING UTILITY LOCATIONS SHOWN HEREIN ARE APPROXIMATE ONLY. IT SHALL BE THE CONTRACTOR'S RESPONSIBILITY TO DETERMINE THE EXACT VERTICAL AND HORIZONTAL LOCATION OF ALL EXISTING UNDERGROUND UTILITIES PRIOR TO COMMENCING CONSTRUCTION. NO REPRESENTATION IS MADE THAT ALL EXISTING UTILITIES ARE SHOWN HEREON. THE ENGINEER ASSUMES NO RESPONSIBILITY FOR UTILITIES NOT SHOWN OR UTILITIES NOT SHOWN IN THEIR PROPER LOCATION. ALL DISCREPANCIES MUST BE IMMEDIATELY REPORTED TO THE ENGINEER. CALL BEFORE YOU DIG: 1-800-227-2600.

BASIS OF BEARINGS:

NORTH 89°29'41" EAST, BEING THE NORTH LINE OF THE NORTHEAST QUARTER (NE 1/4) OF THE NORTHEAST QUARTER (NE 1/4) OF SECTION 29, TOWNSHIP 19 SOUTH, RANGE 08 EAST, M.D.M. AS DEFINED BY THE NEVADA COORDINATE SYSTEM OF 1983 (NCS83), EAST ZONE, AS DETERMINED BY PUBLISHED VALUES BY THE NATIONAL GEODETIC SURVEY FOR THE LAS VEGAS VALLEY WATER DISTRICT CONTINUOUSLY OPERATING REFERENCE STATIONS: NVCS (CARLTON SQUARE), LVWD (MOUNTAIN VIEW TROPICANA).

BENCHMARK

BLVD 2204 RIVET A PLATE IN CONCRETE PAD (TELEPHONE EQUIPMENT) AT THE NORTHEAST CORNER OF TROPICAL PARKWAY AND EL CAPITAN WAY = 770.5491m ± 2528.04m
PROJECT DATUM ADJUSTMENT
2528.04 + 0.40 = 2528.44 PROJECT DATUM

LEGAL DESCRIPTION

A PORTION OF THE E 1/2 OF THE NE 1/4 OF SECTION 29, TOWNSHIP 19 SOUTH, RANGE 08 EAST, M.D.M.

REDUCED PRESSURE DETECTOR ASSEMBLY (RPDA)

THE REDUCED PRESSURE DETECTOR ASSEMBLY SHALL BE INSTALLED IN ACCORDANCE WITH THE UDACS PLATE NO. 58. NO WATER SHALL BE TAKEN FROM A SERVICE REQUIRING BACKFLOW PREVENTION UNTIL THE ASSEMBLY HAS BEEN SUCCESSFULLY TESTED BY LVWD. ANY BLOCK WALL OR OTHER FENCE MATERIAL SHALL BE DESIGNED AND CONSTRUCTED AROUND THE OUTSIDE OF THE EASTMENT(S) SO AS TO ALLOW LVWD DIRECT ACCESS FROM THE ADJACENT RIGHT-OF-WAY. EASEMENTS SHALL BE CLEARLY MARKED OR STAKED PRIOR TO THE START OF CONSTRUCTION.

DUAL REDUCED PRESSURE PRINCIPAL ASSEMBLY (RPPA) (2) - 4"

APPROVED DUAL REDUCED PRESSURE PRINCIPAL ASSEMBLY(S) SHALL BE INSTALLED PER UDACS PLATE NO. 11 D. NO WATER SHALL BE TAKEN FROM A SERVICE REQUIRING BACKFLOW PREVENTION UNTIL THE DUAL REDUCED PRESSURE PRINCIPAL ASSEMBLY HAS BEEN SUCCESSFULLY TESTED BY THE LVWD. ANY BLOCK WALL OR OTHER FENCE MATERIAL SHALL BE DESIGNED AND CONSTRUCTED AROUND THE OUTSIDE OF THE EASEMENTS TO ALLOW THE DISTRICT DIRECT ACCESS FROM THE ADJACENT RIGHT-OF-WAY. EASEMENT SHALL BE CLEARLY MARKED OR STAKED PRIOR TO THE START OF CONSTRUCTION.

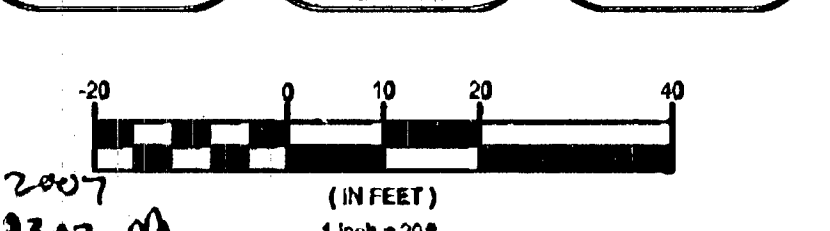
NOTE: DCSW AND RPPA ARE TO CONFORM WITH CITY OF LAS VEGAS CHAPTER 12.04, OF THE ZONING AND SUBDIVISION LAWS.
NOTE: INSTALL PIPELINE MARKER BALLS IN TRENCH ABOVE EACH HORIZONTAL ELBOW FITTING, PER UDACS PLT. NO. 27

FIRE FLOW CALCULATIONS

FIRE FLOW CALCULATIONS ARE BASED UPON THE LARGEST BUILDING TYPE WHICH IS TYPE "A".
Fire Flow Requirement is 2,125 gallons per minute at 20 psi residual pressure.
Based on:
Square Footage (S.F.) BLDG 87,000
Largest area between 4-hour area separation walls (S.F.) N/A
Building Height (FT) 40
Number of Stories (FLOORS) 3
Number of Units: N/A
Type of Construction: III-A
Full Automatic Fire Sprinkler System: Yes No

Reviewed By: [Signature] Date: 1/14/08
* BASED ON THE 2003 NFPA-1 UNIFORM FIRE CODE.

Call before you dig. 1-800-227-2600 UNDERGROUND SERVICE
Call before you OVERHEAD. 1-702-227-2929 NEVADA POWER AND LIGHT COMPANY
Call before you UNDERGROUND. 1-702-455-7511 CLARK COUNTY TRANSPORTATION DEPARTMENT



FOR CONTINUATION SEE SHEET UP-8



VENTURE CORPORATION
CENTENNIAL HILLS PROFESSIONAL CENTER
UTILITY PLAN

JOB # 052058.01
SHEET NO.:

UP-5

57 OF 87 SHEETS
H#13769 CLV#1074938