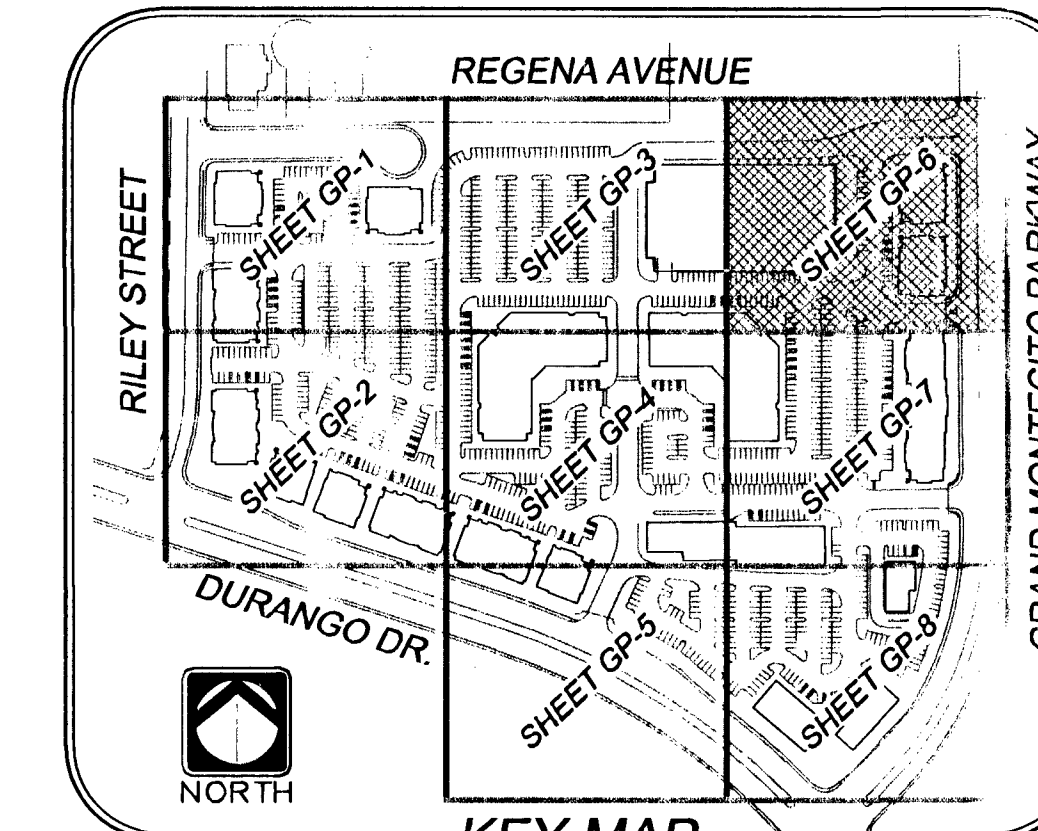


EXISTING GRADING PER
JIM MARSH PLANS BY
MARTIN @MARTIN
CLV #1870/
DS #3963

APN: 125-29-310-009
OWNER: TRIMMER FAMILY LLC
AND HOG CREEK INC.
CLV DWG# 107-V3292
CLV DWG# 307-V811
CLV DWG# 307-V770



BASIS OF BEARINGS:
N19°29'41" EAST, BEING THE NORTH LINE OF THE NORTHEAST QUARTER (NE 1/4) OF THE NORTHEAST QUARTER (NE 1/4) OF SECTION 29, TOWNSHIP 19 SOUTH, RANGE 60 EAST, M.D.M. AS DEFINED BY THE NEVADA COORDINATE SYSTEM OF 1983 (NCS83), EAST ZONE, AS DETERMINED BY PUBLIC WORKS CONSTRUCTION, OFF-SITE IMPROVEMENTS, CLARK COUNTY AREA, NEVADA, LATEST EDITION.

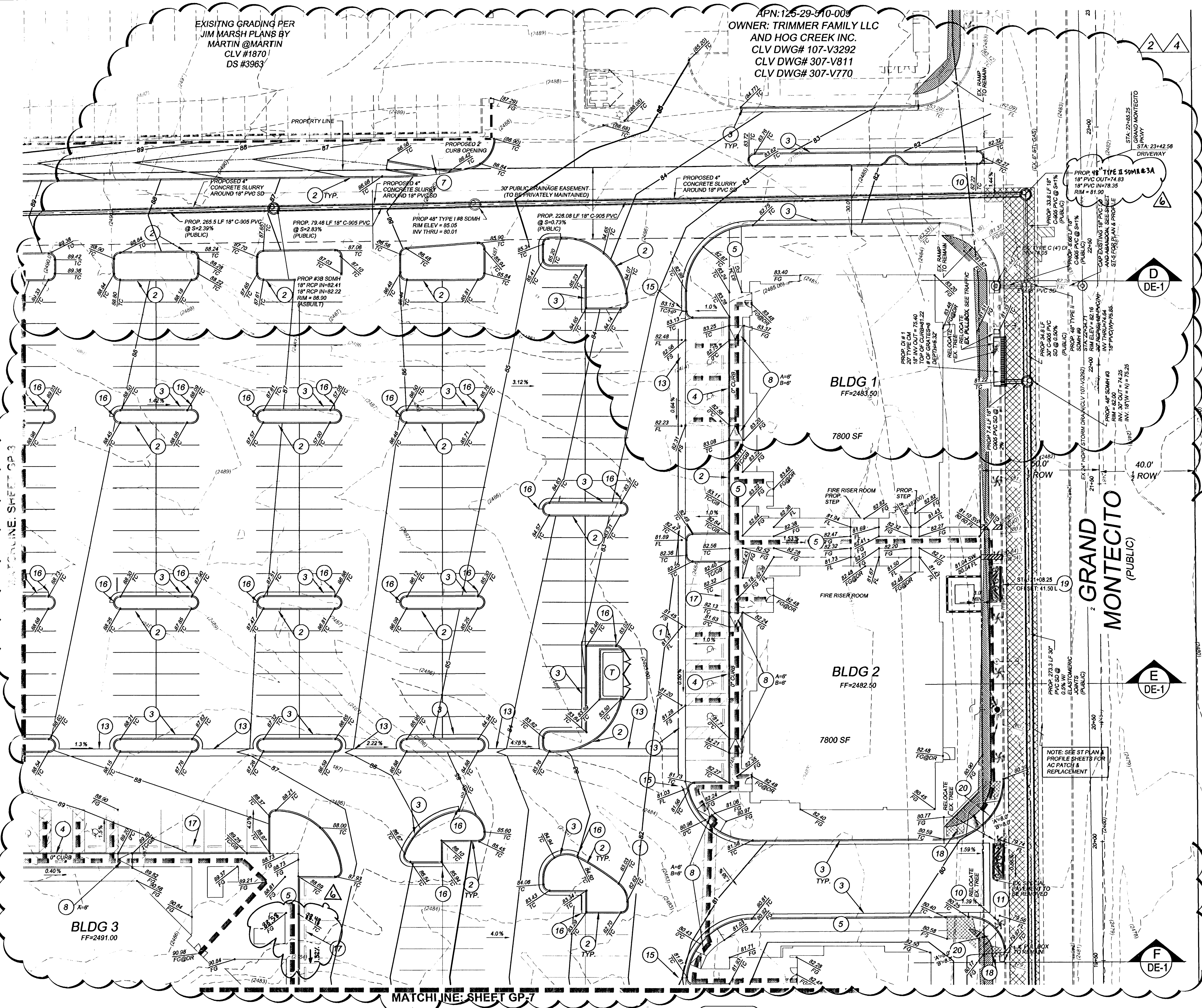
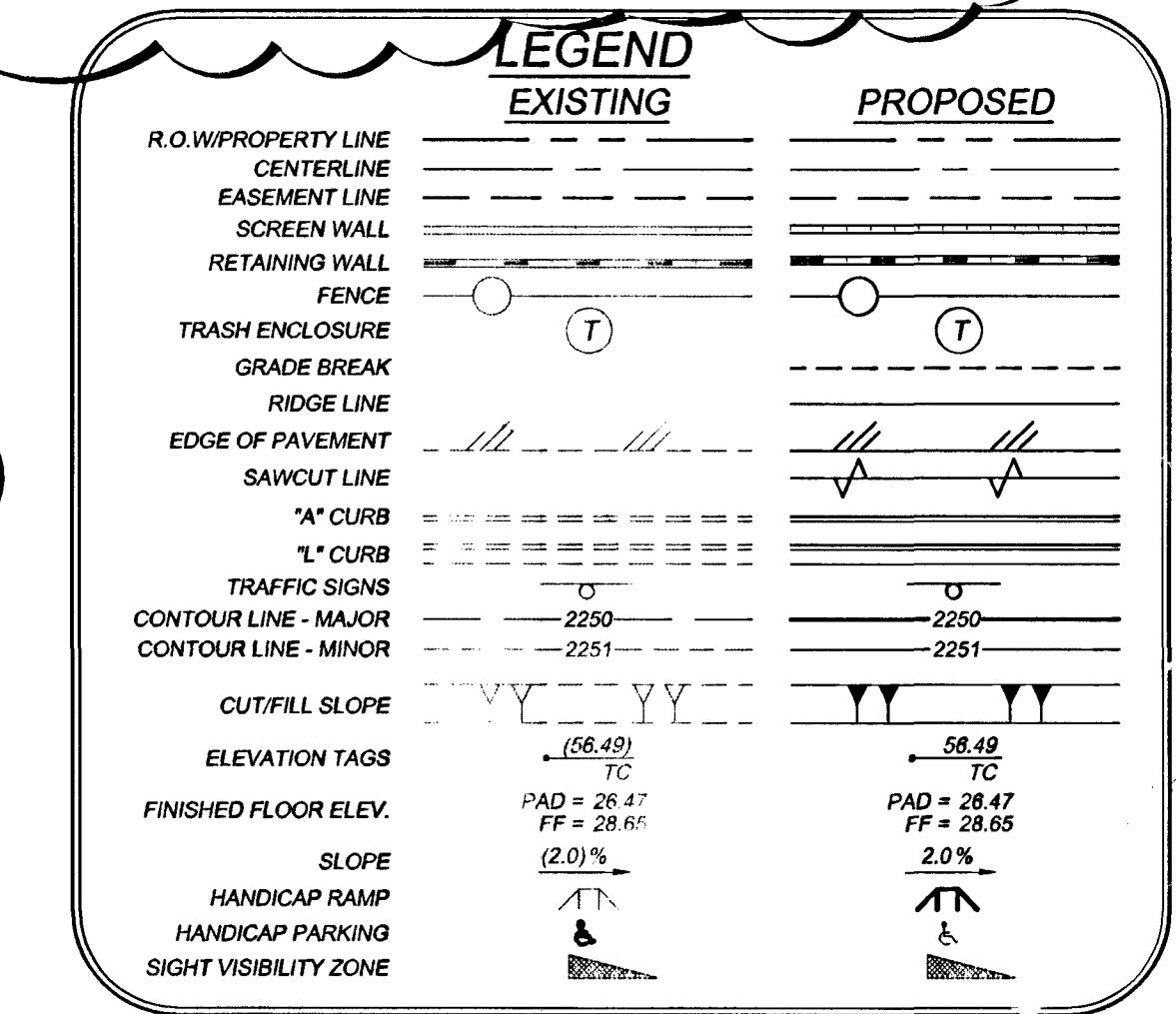
BENCHMARK:
BLV90 29C4, RIVET & PLATE IN CONCRETE PAD (TELEPHONE EQUIPMENT) AT THE NORTHEAST CORNER OF TROPICAL PARKWAY AND EL CAPITAN WAY = 770.5491m = 2528.04ft.

LEGAL DESCRIPTION:
A PORTION OF THE E 1/2 OF THE NE 1/4 OF SECTION 29, TOWNSHIP 19 SOUTH, RANGE 60 EAST, M.D.M. GRADING NOTES

- REFER TO THE SOILS REPORT FOR AC PAVEMENT AND ALL OTHER SECTION INFORMATION.
- ALL OFF-SITE IMPROVEMENT CONSTRUCTION SHALL CONFORM TO THE UNIFORM STANDARD SPECIFICATIONS FOR PUBLIC WORKS CONSTRUCTION, OFF-SITE IMPROVEMENTS, CLARK COUNTY AREA, NEVADA, LATEST EDITION.
- FINAL ASPHALTIC CONCRETE (AC) PAVEMENT SURFACES SHALL BE ONE-HALF INCH ABOVE THE TOP OF THE GUTTER (INCLUDING OPEN GRADE).
- SEE SITE ARCHITECT'S PLANS FOR ALL HANDICAP ACCESSIBILITY INFORMATION, RAMP DETAILS, TRANSFORMERS, AND TRASH ENCLOSURES. VERIFY BUILDING LAYOUT WITH ARCHITECT'S PLANS.
- CONTRACTOR IS RESPONSIBLE FOR DUST AND EROSION CONTROL DURING CONSTRUCTION.
- SEE LANDSCAPE PLANS FOR LANDSCAPING AND ON-SITE IRRIGATION.
- THESE PLANS SHALL NOT, IN PART OR IN WHOLE, BE USED FOR CONSTRUCTION UNTIL APPROVED AND SIGNED BY THE GOVERNMENT AGENCIES.
- ENGINEER TO BE NOTIFIED OF ANY DISCREPANCIES IMMEDIATELY.
- ADD 2400 TO ALL ELEVATIONS TO GET ACTUAL ELEVATIONS.
- RETAINING WALLS TO BE CONSTRUCTED PER CITY OF LAS VEGAS BLDG DEPT STANDARDS.
- SEE HC PLANS FOR STATIONS AND LINE/CURB INFORMATION.

CONSTRUCTION NOTES

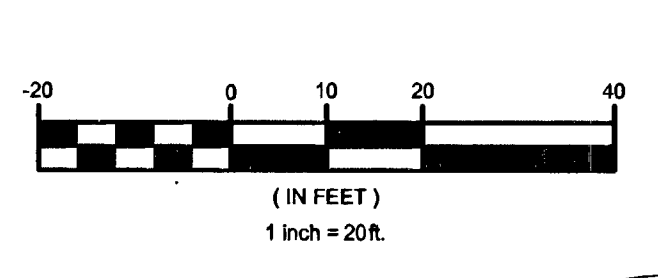
| No. | ITEM |
|-----|---|
| 1 | CONSTRUCT 2" MIN. AC OVER 4" TYPE II AGGREGATE BASE IN PARKING AREAS |
| 2 | CONSTRUCT "A" TYPE CURB PER CCAUSD NO. 219 |
| 3 | CONSTRUCT "L" TYPE CURB AND GUTTER PER CCAUSD NO. 218 |
| 4 | CONSTRUCT 0" CURB FACE |
| 5 | CONSTRUCT 5" (4" THK) SIDEWALK PER CCAUSD NO. 234 & TC STDS |
| 6 | CONSTRUCT SIDEWALK UNDERDRAIN PER CCAUSD NO. 236 |
| 7 | CONSTRUCT 2" CURB OPENING |
| 8 | CONSTRUCT SIDEWALK RAMPS USING ARMOR TILE TRUNCATED DOMES OR EQUIVALENT PER CCAUSD NO. 235, CASE II & TC STDS |
| 9 | CONSTRUCT RETAINING WALL PER TC STDS (STRUCTURAL BY OTHERS) W/RAILING PER ADA STANDARDS AND ARCH. PLANS |
| 10 | CONSTRUCT COMMERCIAL DRIVEWAY PER CCAUSD NO. 222A AND 225 |
| 11 | CONSTRUCT 8" CROSS GUTTER PER CCAUSD NO. 228 |
| 12 | CONSTRUCT 7" LANDSCAPING BERM |
| 13 | CONSTRUCT 3" VALLEY GUTTER PER DETAIL A1 ON DE-4 |
| 14 | BUS STOP LOADING PAD PER CCAUSD NO. 234.2 |
| 15 | CONSTRUCT TRANSITION FROM "L" CURB TO 3" V.G. PER DETAIL A3 ON DE-4 |
| 16 | CONSTRUCT END SECTION PER DETAIL A2 ON DE-4 |
| 17 | CONSTRUCT BUMPER BLOCK PER CCAUSD NO. 238 |
| 18 | CONSTRUCT SPECIAL PAVEMENT AND SIDEWALK TREATMENTS PER DETAIL F1 ON DE-4 |
| 19 | CONSTRUCT SPECIAL PAVEMENT AND SIDEWALK TREATMENTS PER DETAIL F1 ON DE-4 |
| 20 | CONSTRUCT SIDEWALK RAMP USING ARMOR TILE TRUNCATED DOMES OR EQUIVALENT PER CCAUSD NO.235, CASE II, & TC STDS. |
| 21 | CONSTRUCT 9.5" (4" THK) SIDEWALK PER CCAUSD NO. 234, & TC STDS. |



EARTHWORK QUANTITIES
THESE QUANTITIES ARE APPROXIMATE AND ARE RAW VOLUMES ONLY. OVER-EXCAVATION, SUBSIDENCE, SHRINKAGE, BULKING FACTORS, & CONSTRUCTION MATERIAL IMPORT ARE NOT TAKEN INTO ACCOUNT.
CUT = 15833 CY
FILL = 48283 CY
TOTAL = 32450 CY (FILL)

FLOOD DESIGNATION
FIRM MAP DATED: MAP REVISED SEPTEMBER 27, 2002
FIRM PANEL NUMBER: 32003C1745 E, ZONE X
DESCRIPTION OF ZONE X FLOOD ZONE: THOSE AREAS DESIGNATED TO BE OUTSIDE THE 100-YEAR FLOODPLAIN.

SOILS REPORT NOTE:
ALL WORK SHALL CONFORM TO THE GEOTECHNICAL REPORT
PREPARED BY: WESTERN TECHNOLOGIES INC.
PROJECT NO.: 4125.H089
DATED: JULY 20, 2005

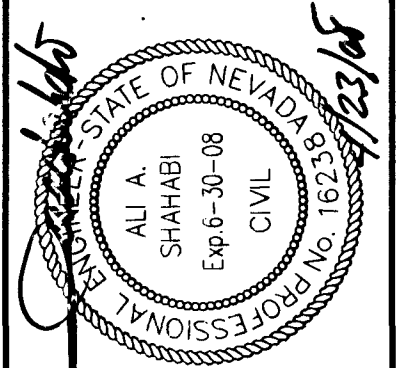


Avoid cutting underground utility lines. If costly.
Call before you Dig.
1-800-227-2600
UNDERGROUND SERVICE

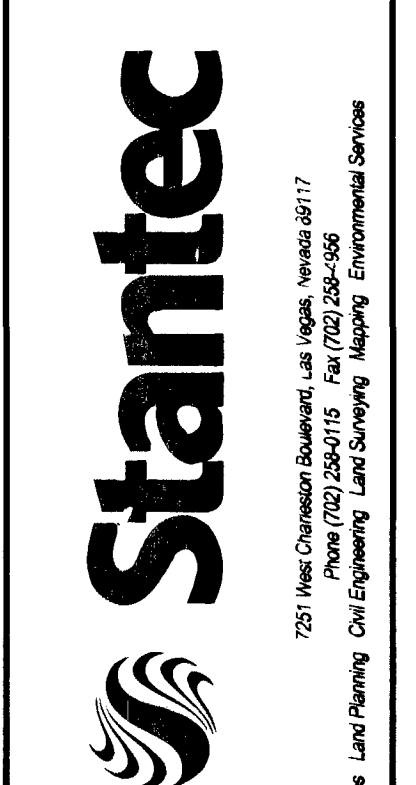
Avoid overhead power line contact.
Call before you OVERHEAD
1-702-227-2929
NEVADA POWER ENVIRONMENT AND SAFETY SERVICES DEPARTMENT

Call before you UnderGround
1-702-455-7511
CLARK COUNTY TRAFFIC OPERATIONS and SAFETY SERVICES
1-702-229-6611

I CERTIFY THAT THIS GRADING PLAN IS IN CONFORMANCE WITH THE APPROVED DRAINAGE STUDY ON FILE WITH THE CITY OF LAS VEGAS FOR THIS PROJECT.
CLV DSK9941
Alia A. Shahabi 4/23/08
ALIA A. SHAHABI, P.E. #18238 DATE



| REV. | DATE | DESCRIPTION |
|------|---------|--|
| 1 | 7/14/09 | REVISED STORM DRAIN FOR CLERENCES AND ASBUILT INFORMATION |
| 2 | 4/28/08 | REVISED UTILITY ELEVATIONS & ADJUST PROJECT BENCHMARK AND DATUM. ADJUST PAVING LAYOUT/GRADING. ADDED TRANSFORMER |



VENTURE CORPORATION
CENTENNIAL HILLS PROFESSIONAL CENTER
GRADING PLAN
JOB # 1881205801
SHEET NO.:
GP-6
24 OF 87 SHEETS
CLV # 107Y4938