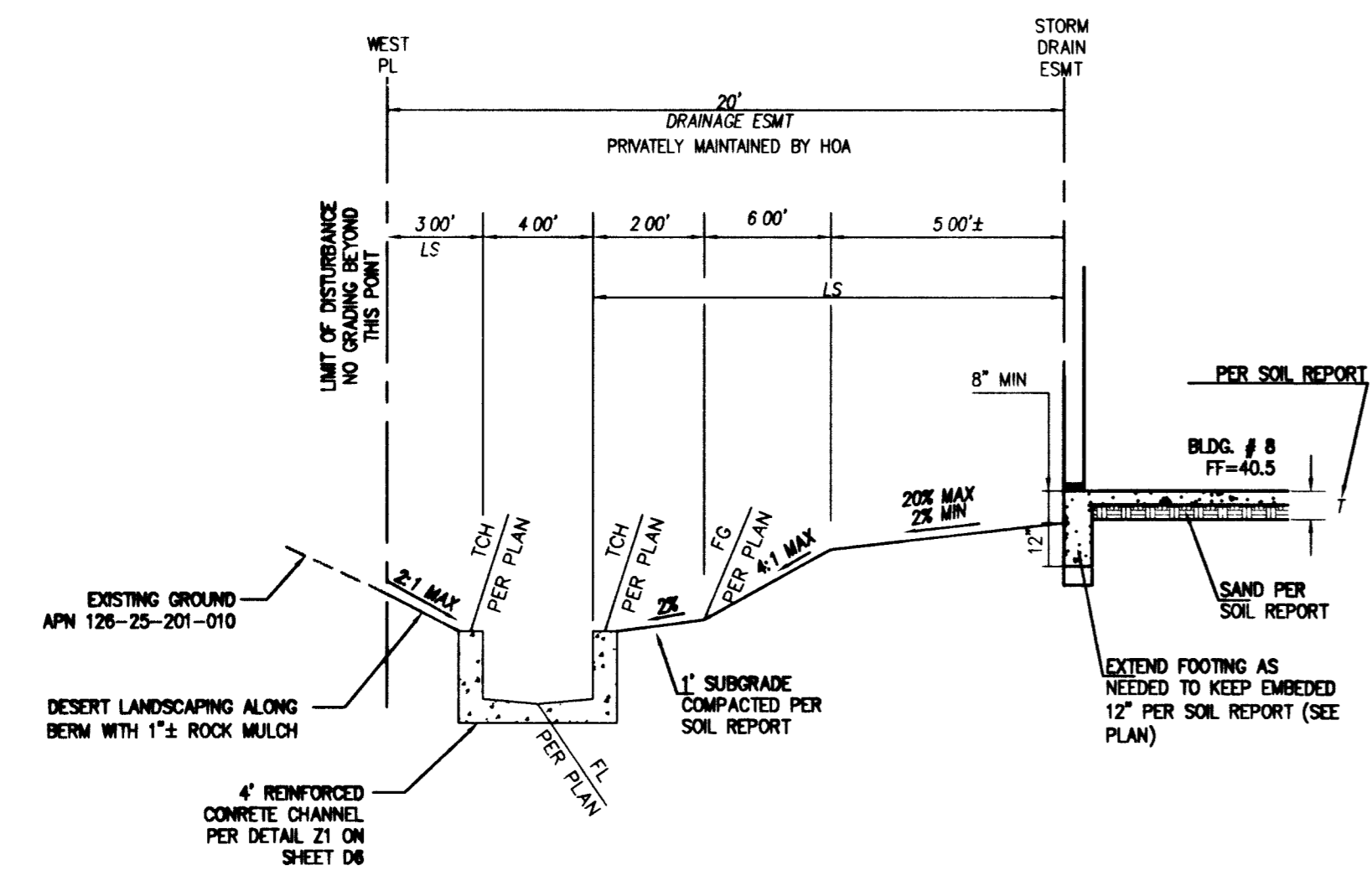


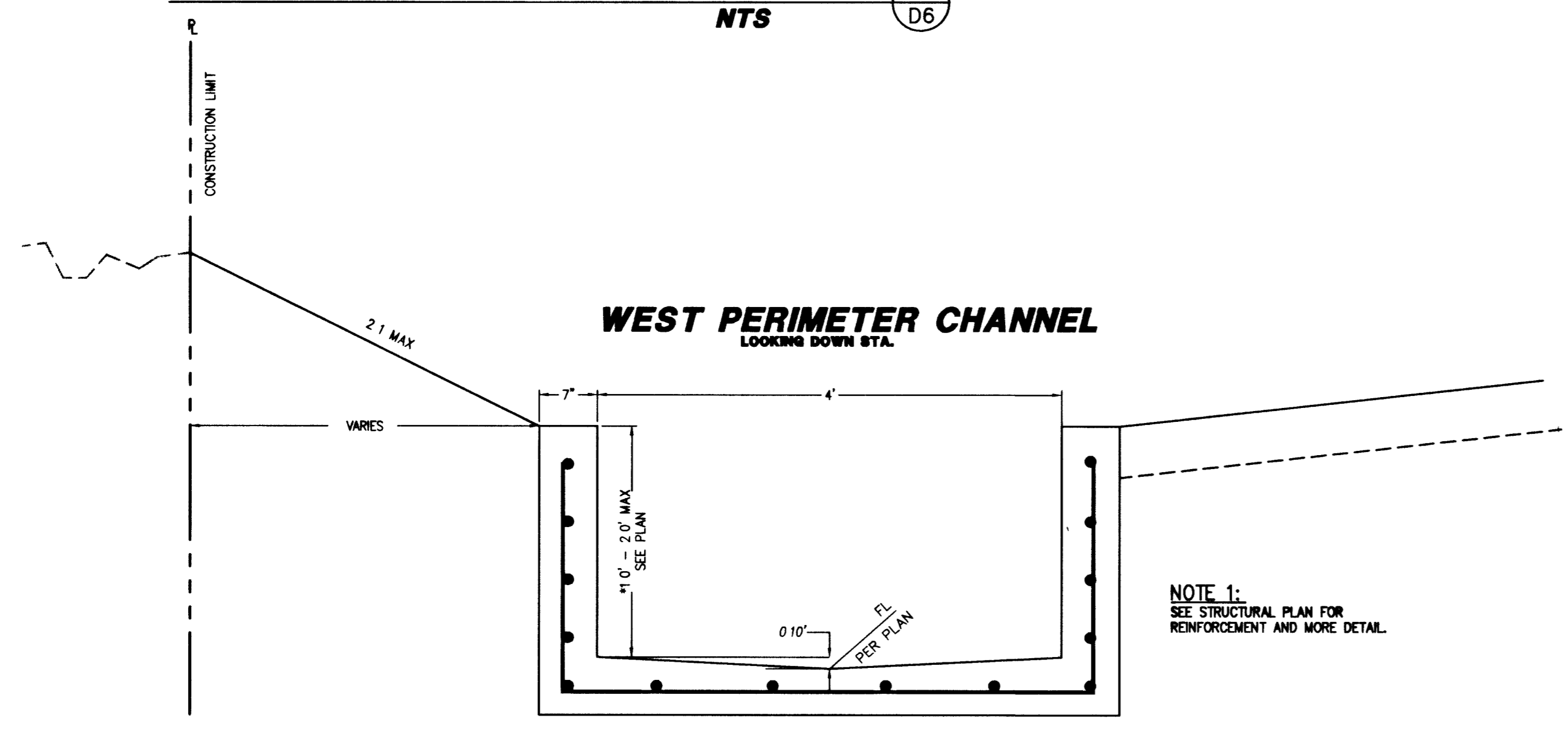
**SECTION U1**  
NTS (U1 D6)

\*ALL INFORMATION SHOWN HEREON ARE FOR GUIDANCE ONLY. REFER TO GEOTECHNICAL REPORT BY: GTI- NEVADA WORK ORDER NO. 7752-LV6



**SECTION V1**  
NTS (V1 D6)

\*ALL INFORMATION SHOWN HEREON ARE FOR GUIDANCE ONLY. REFER TO GEOTECHNICAL REPORT BY: GTI- NEVADA WORK ORDER NO. 7752-LV6

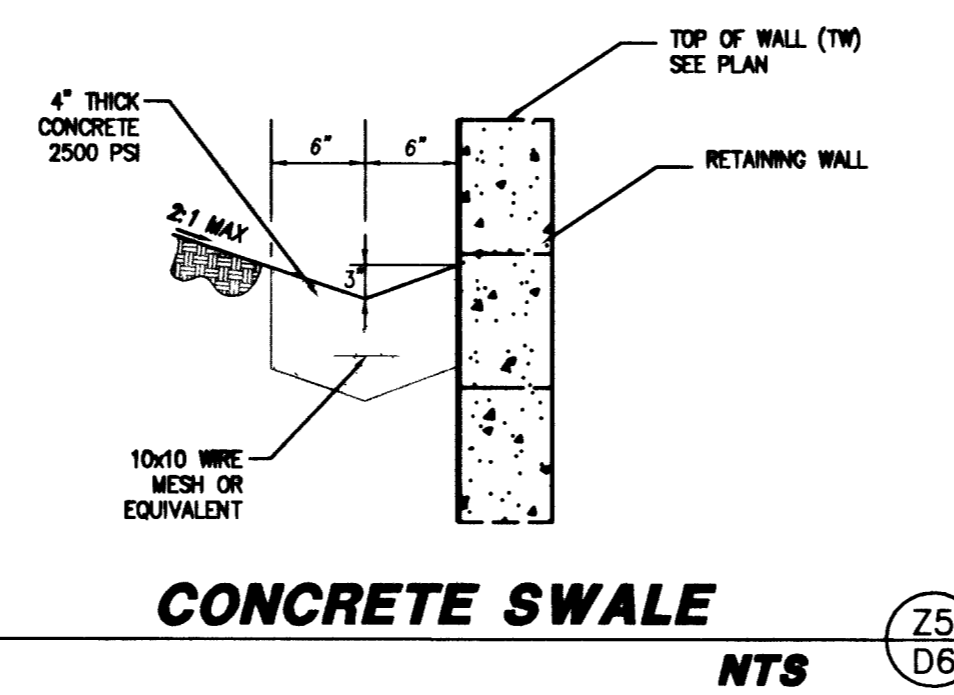
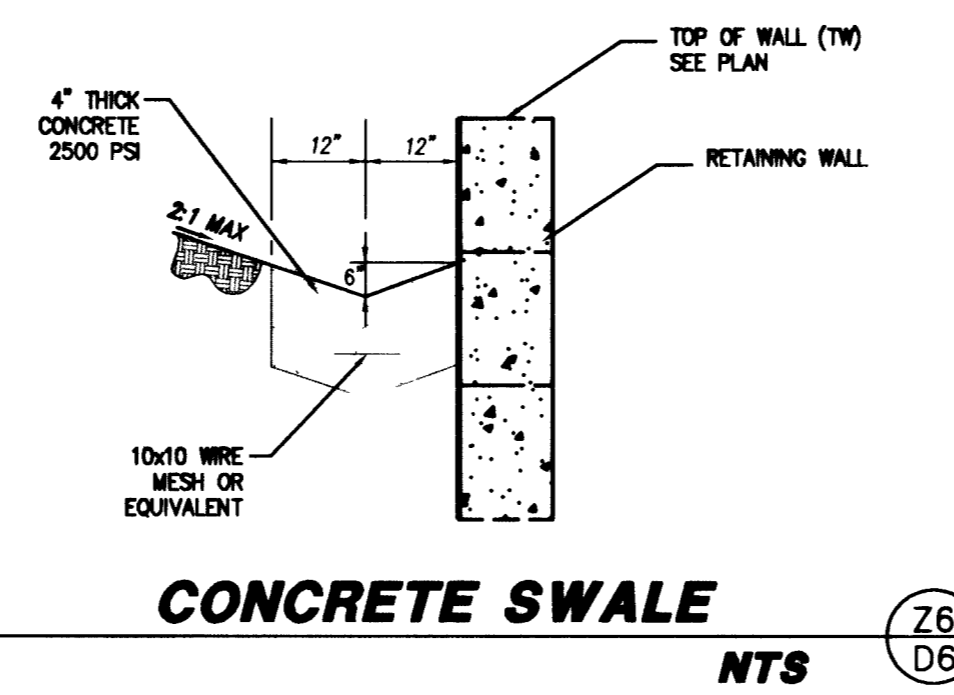
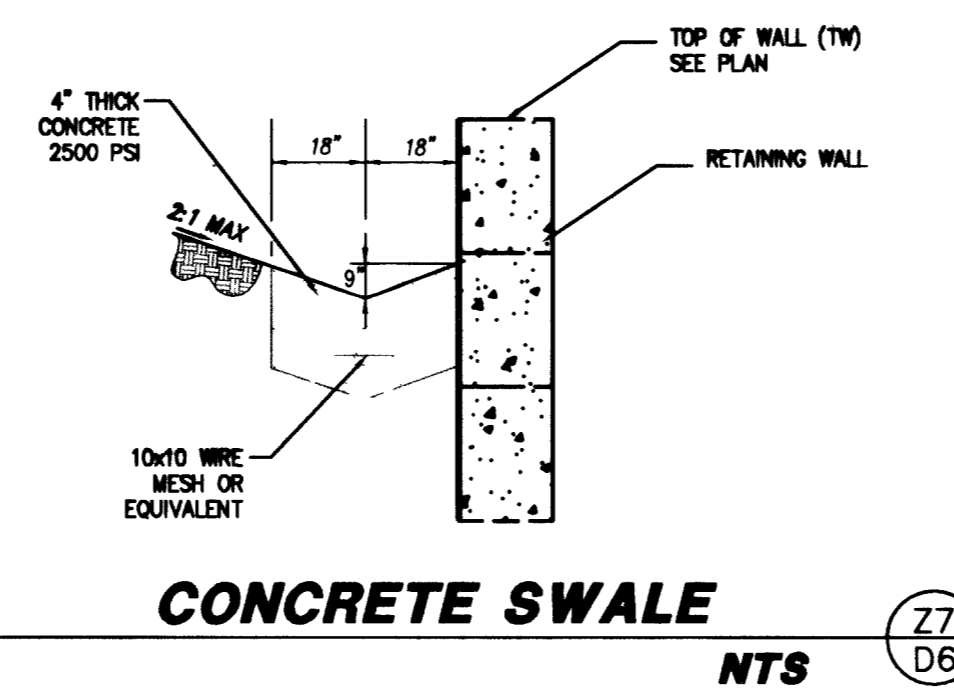


**WEST PERIMETER CHANNEL**  
NTS (Z1 D6)

**NOTE 1:** SEE STRUCTURAL PLAN FOR REINFORCEMENT AND MORE DETAIL.

**NOTE 2:** WALL HEIGHT OF CHANNEL MAY BE ADJUSTED VERTICALLY UP OR DOWN 0.5' MAX TO BEST MATCH EXISTING TERRAIN AND MAINTAIN POSITIVE FLOWS INTO THE CHANNEL. CONTRACTOR TO COORDINATE WITH STRUCTURAL ENGINEER.

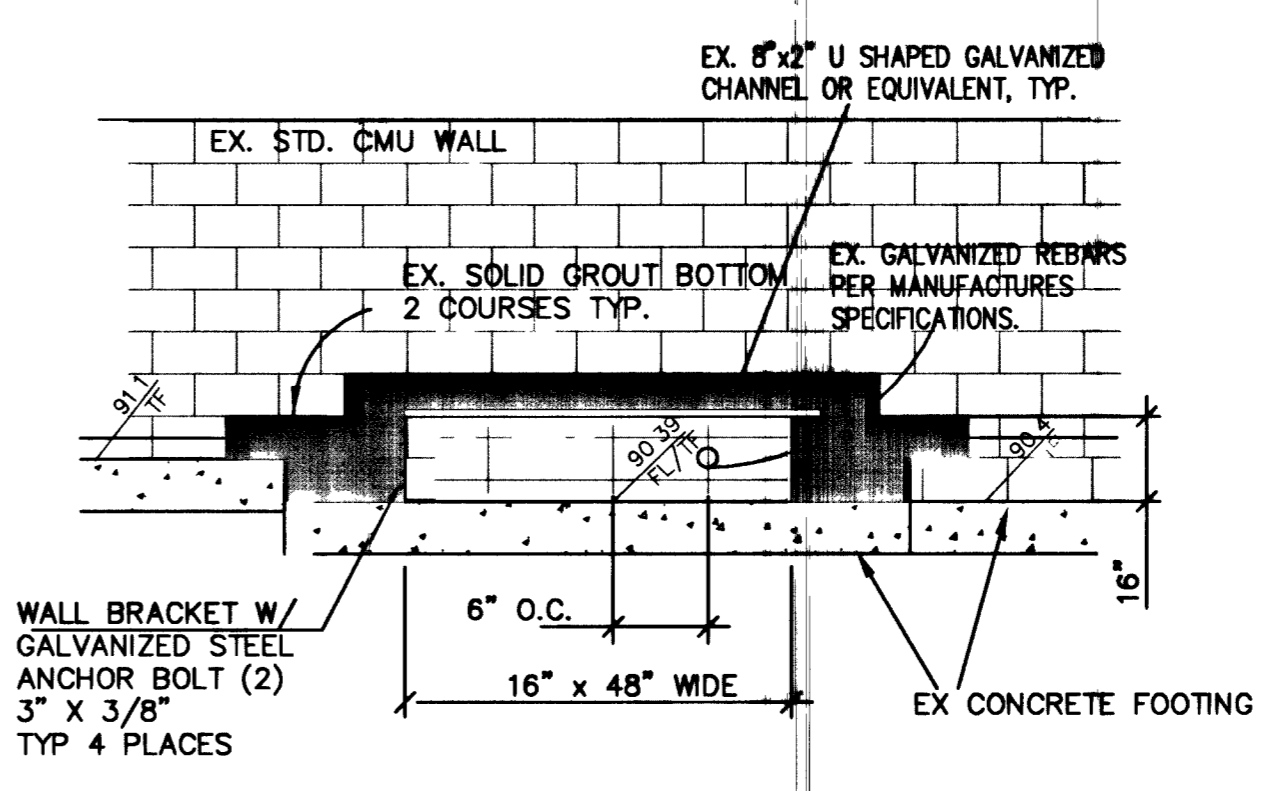
\*HEIGHT VARIES FROM 1' TO 2' UNLESS SPECIFIED ON THE PLAN.



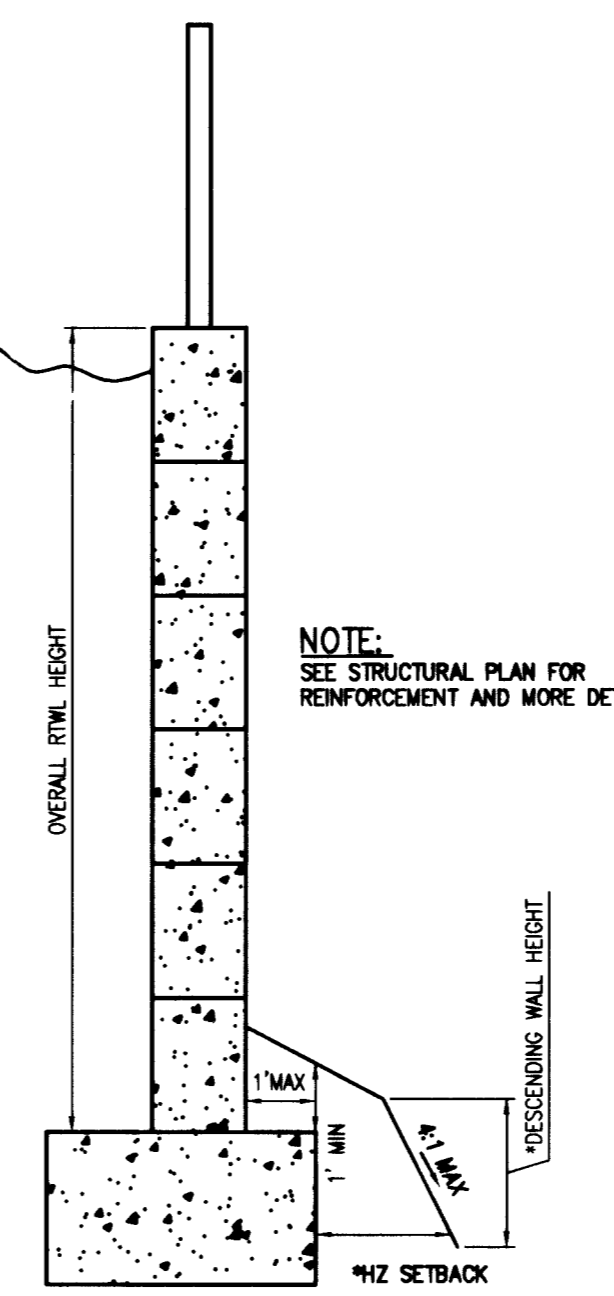
**CONCRETE SWALE**  
NTS (Z7 D6)

**CONCRETE SWALE**  
NTS (Z6 D6)

**CONCRETE SWALE**  
NTS (Z5 D6)



**48\"/>NTS (Z2 D6)**



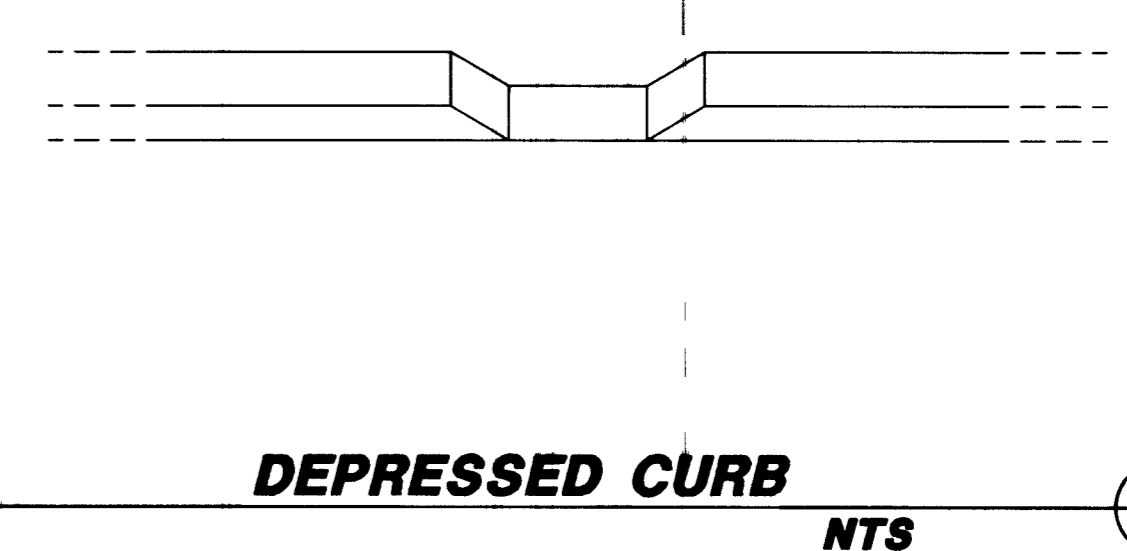
**WALL BACKFILL AND DRAINAGE DETAILS**  
NTS (Z4 D6)

*DESCENDING SLOPE HEIGHT	*HORIZONTAL SETBACK
UP TO 5' HIGH	2' 8"
5'-8' HIGH	3' 8"
8'-10' HIGH	4' 8"

NOTE: ALL RETAINING WALLS MUST HAVE 4\"/>

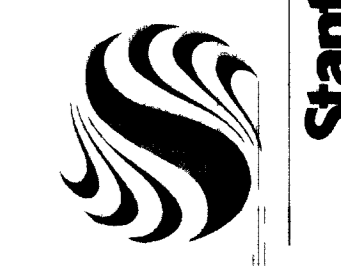
\*ALL INFORMATION SHOWN HEREON ARE FOR GUIDANCE ONLY. REFER TO GEOTECHNICAL REPORT BY: GTI- NEVADA WORK ORDER NO. 7752-LV6

**MINIMUM HORIZONTAL SETBACKS FOR RETAINING AND BLOCK WALLS**  
NTS (Z3 D6)



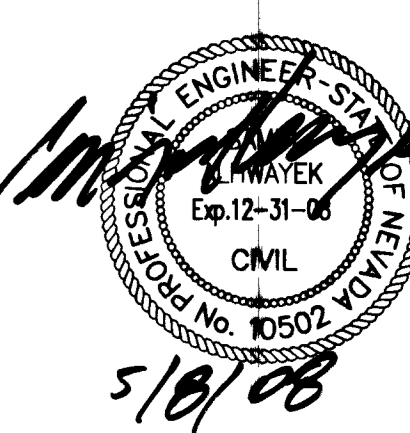
**DEPRESSED CURB**  
NTS (Z7 D6)

Stantec Consulting Inc.  
7251 West Charleston Boulevard  
Las Vegas, NV 89117  
Tel: 702.258.0115  
Fax: 702.258.4956  
www.stantec.com



Client/Project: FAIRFIELD CENTENNIAL, LLC  
CENTENNIAL CONDOMINIUMS  
CITY OF LAS VEGAS, NV

Permit-Seal



Project Number	188100435		
File Name	00435c-501gdet.dwg		
DWN	CHKD	DSGN	DATE
EA/BZ	SA/BZ	PA/BZ	5/7/20
Drawing No.	D6		
CLV#	107Y4967		
Revision	Sheet		