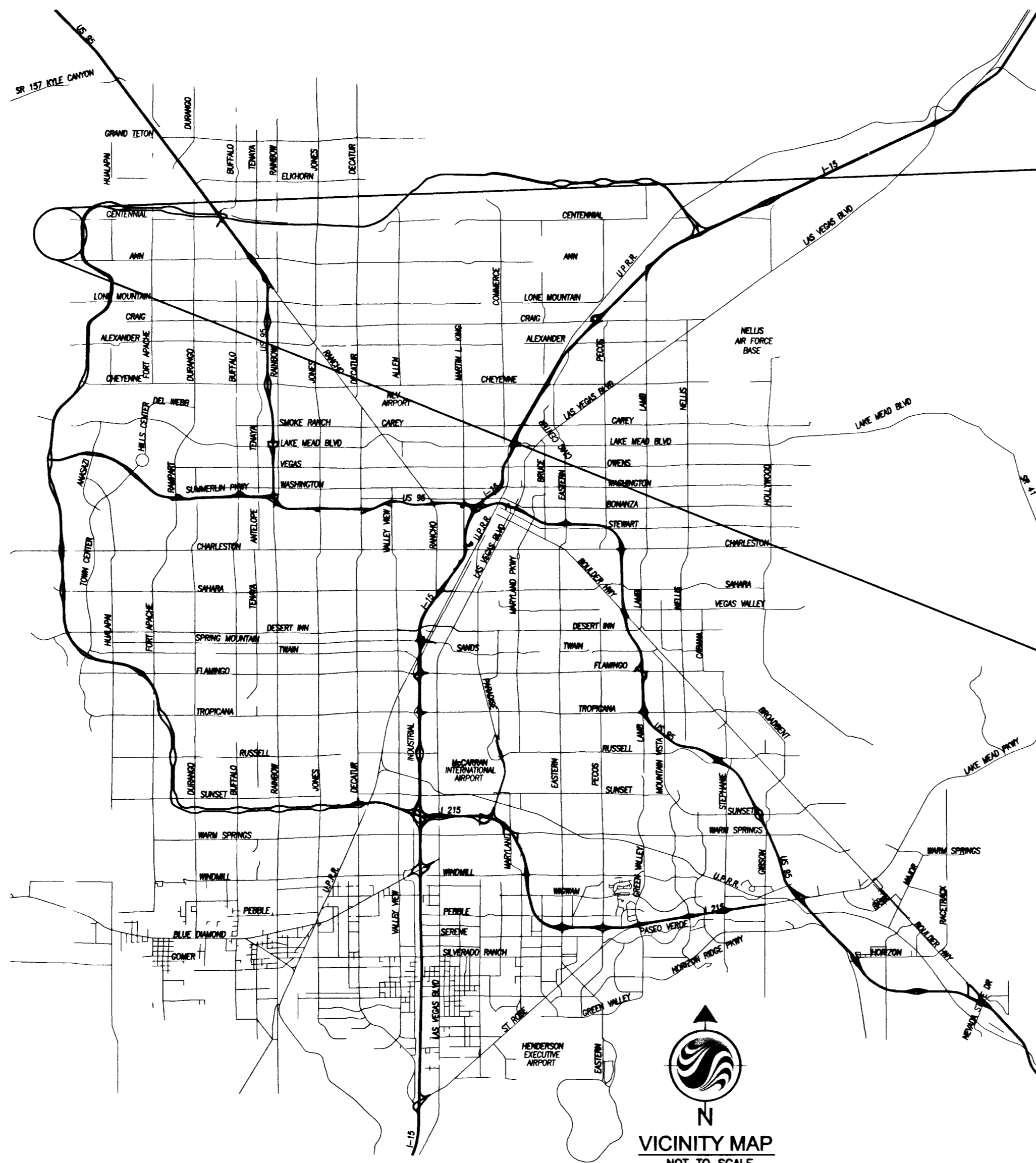


Stantec



VICINITY MAP
NOT TO SCALE

PROJECT NAME Centennial Condominiums
This project water plan complies with the Las Vegas Valley Water District's technical requirements. However, this water plan is
NOT APPROVED FOR CONSTRUCTION
at the time and this signature does not provide or imply a water commitment
Mal Nabe 4/29/08
LVMWD DATE
ESN 052 Project # 115047 REVISED 06/01/04

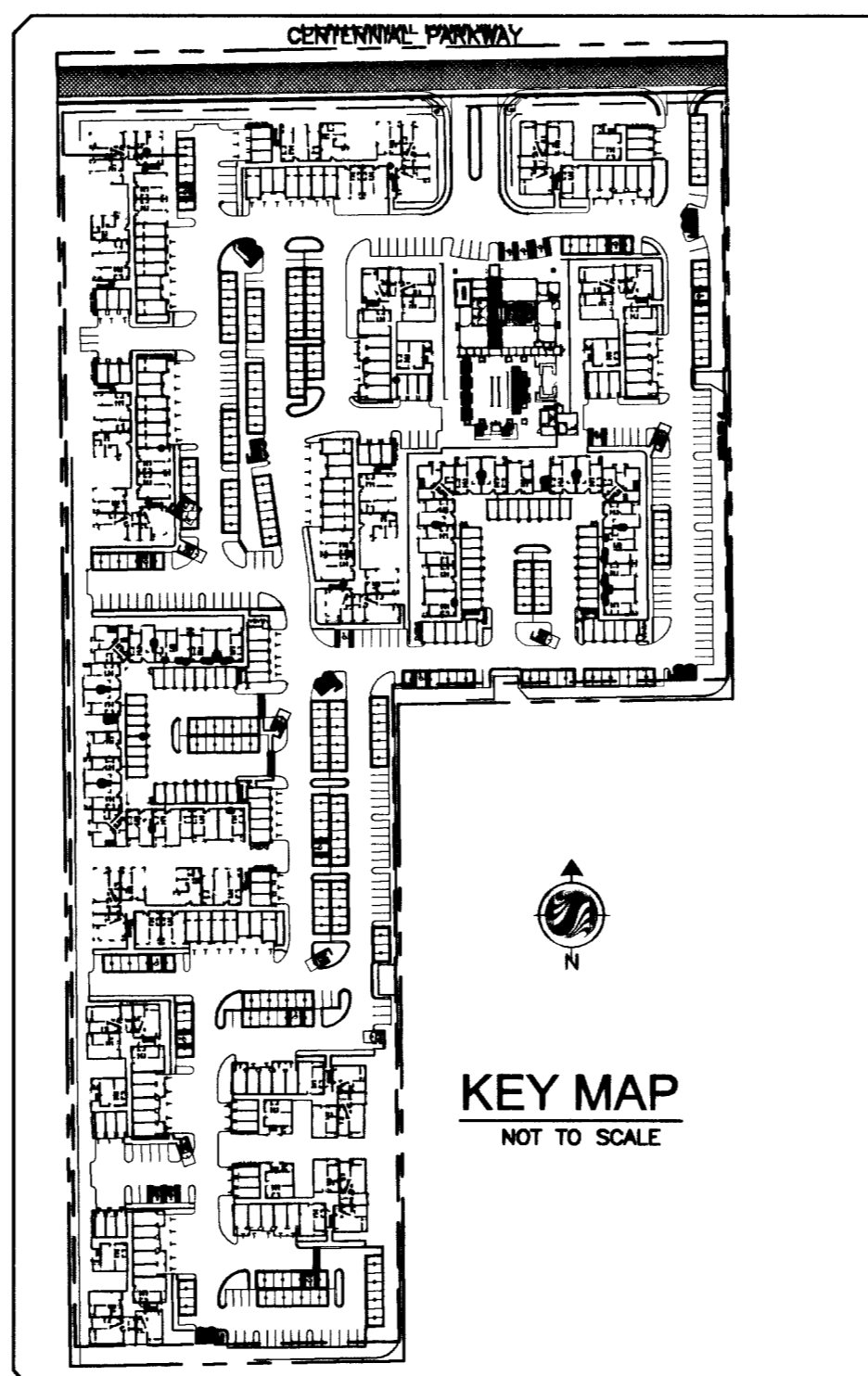
FAIRFIELD CENTENNIAL, LLC CENTENNIAL CONDOMINIUMS COVER SHEET

CITY OF LAS VEGAS
STATE OF NEVADA

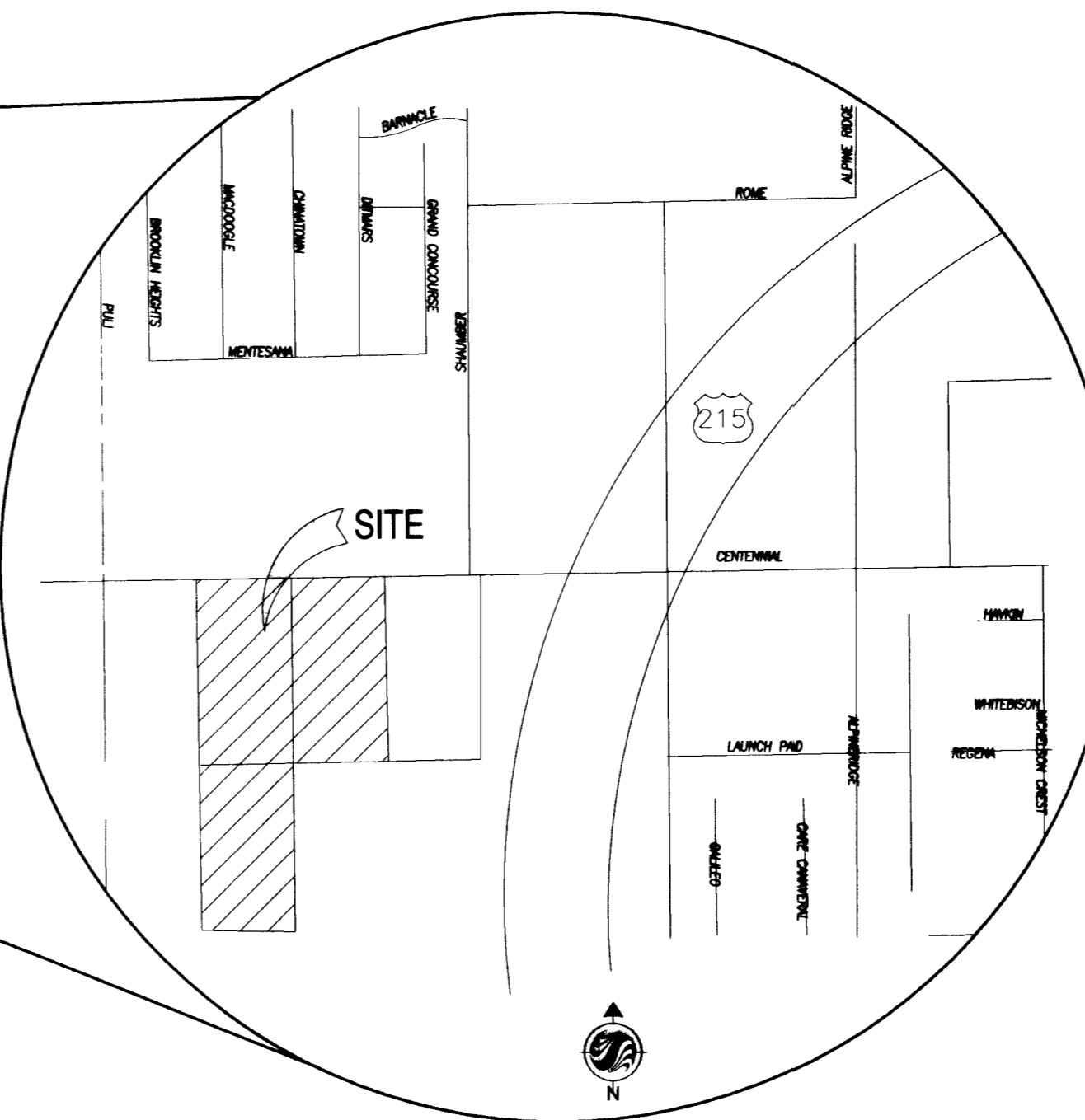
April 2008

APN's #126-25-101-001, 002, 005

Project Number: 188100435



KEY MAP
NOT TO SCALE



Sheet Number	Sheet Title
1	C1 COVER SHEET
2	C2 GENERAL NOTES ABBREVIATIONS LEGEND & QUANTITIES
3	MH MASTER HORIZONTAL CONTROL, STREET LIGHTING, AND SIGNAGE
4	H1 HORIZONTAL CONTROL, STREET LIGHTING, AND SIGNAGE PLAN
5	H2 HORIZONTAL CONTROL, STREET LIGHTING, AND SIGNAGE PLAN
6	H3 HORIZONTAL CONTROL, STREET LIGHTING, AND SIGNAGE PLAN
7	H4 HORIZONTAL CONTROL, STREET LIGHTING, AND SIGNAGE PLAN
8	H5 HORIZONTAL CONTROL, STREET LIGHTING, AND SIGNAGE PLAN
9	H6 HORIZONTAL CONTROL, STREET LIGHTING, AND SIGNAGE PLAN
10	H7 HORIZONTAL CONTROL, STREET LIGHTING, AND SIGNAGE PLAN
11	H8 HORIZONTAL CONTROL, STREET LIGHTING, AND SIGNAGE PLAN
12	G1 GRADING PLANS
13	G2 GRADING PLANS
14	G3 GRADING PLANS
15	G4 GRADING PLANS
16	G5 GRADING PLANS
17	G6 GRADING PLANS
18	G7 GRADING PLANS
19	G8 GRADING PLANS
20	D1 GRADING DETAILS
21	D2 GRADING DETAILS
22	D3 GRADING DETAILS
23	D4 GRADING DETAILS
24	D5 GRADING DETAILS
25	D6 GRADING DETAILS
26	D7 GRADING DETAILS
27	D8 GRADING DETAILS
28	P1 PLAN & PROFILE
29	P2 PLAN & PROFILE
30	P3 PLAN & PROFILE
31	P4 PLAN & PROFILE
32	P5 PLAN & PROFILE
33	P6 PLAN & PROFILE
34	SD1 STORM DRAIN PLAN & PROFILE
35	SD2 STORM DRAIN PLAN & PROFILE
36	SD3 STORM DRAIN PLAN & PROFILE
37	SD4 STORM DRAIN PLAN & PROFILE
38	SD5 STORM DRAIN PLAN & PROFILE
39	SD6 STORM DRAIN PLAN & PROFILE
40	MU MASTER UTILITY
41	U1 UTILITY PLAN
42	U2 UTILITY PLAN
43	U3 UTILITY PLAN
44	U4 UTILITY PLAN
45	U5 UTILITY PLAN
46	U6 UTILITY PLAN
47	U7 UTILITY PLAN
*48	P1-ALT PLAN & PROFILE CENTENNIAL ALT DESIGN
*49	P2-ALT PLAN & PROFILE CENTENNIAL ALT DESIGN
*50	P3-ALT PLAN & PROFILE CENTENNIAL ALT DESIGN
*51	TR1-ALT TRAFFIC CONTROL PLAN CENTENNIAL ALT DESIGN
*52	TR2-ALT TRAFFIC CONTROL PLAN CENTENNIAL ALT DESIGN

* CONTRACTOR TO USE THIS ALTERNATE DESIGN IN CASE THE NORTH HALF OF CENTENNIAL PARKWAY (CLV #1074816-C AND HTE: 05-28871) IS NOT COMPLETELY BUILT PRIOR TO THE START CENTENNIAL CONDOMINIUMS PROJECT.

OWNER/DEVELOPER
FAIRFIELD CENTENNIAL, LLC
5510 MOREHOUSE DRIVE
SUITE 200
SAN DIEGO, CALIFORNIA 92121
PHONE: (858) 457-2123
FAX: (858) 457-1121
CONTACT: SHON FINCH

ENGINEER/SURVEYOR
STANTEC CONSULTING
7251 WEST CHARLESTON BOULEVARD
LAS VEGAS, NEVADA 89117
PHONE: (702) 255-0115
FAX: (702) 255-4956

BENCHMARK
CLV BENCHMARK: BLV90 30W4 NAVD
88V.2002 ELEVATION 834.8354 (METERS),
2738.30 (FEET).

RIVET AND PLATE IN CONCRETE PAD
(ELEC) NE CORNER OF HUALAPAI &
TROPICAL PARKWAY.

BASIS OF BEARINGS
NORTH 00°37'29" WEST, BEING ALONG THE
WEST LINE OF THE NORTHWEST QUARTER
(NW 1/4) OF SECTION 25 TOWNSHIP 19 SOUTH
RANGE 60 EAST M.D.M. AS SHOWN BY
THAT CERTAIN MAP RECORDED IN FILE 104
AT PAGE 74 OF SURVEYS IN THE OFFICE
OF THE COUNTY RECORDER, CLARK
COUNTY, NEVADA.

NOTE TO CONTRACTOR

ALL LAND SURFACE AREA DISTURBANCES OVER 1 ACRE REQUIRE A STORMWATER DISCHARGE PERMIT ISSUED BY THE NEVADA DIVISION OF ENVIRONMENTAL PROTECTION (NDEP). A PHASED CONSTRUCTION UNIT IN A CONTIGUOUS SUBDIVISION IS CONSIDERED UNDER CONSTRUCTION UNTIL ALL STRIPPED OR DISTURBED SURFACE AREAS HAVE BEEN COVERED BY PAVING, BUILDING CONSTRUCTION OR PLANTING. A STORMWATER DISCHARGE PERMIT APPLICATION AND ASSOCIATED INFORMATION MAY BE DOWNLOADED FROM THE WEB SITE: <http://www.nvdepr.com/ndep/permits/storm01.htm>. PROJECTS THAT DISTURB MORE THAN ONE ACRE OF LAND MUST SUBMIT TO NDEP A "NOTICE OF INTENT" FOR INCLUSION UNDER STORMWATER PERMIT NO. NR100000 ALONG WITH THE APPROPRIATE FILING FEE.

THE CONTRACTOR SHALL BE RESPONSIBLE TO INVESTIGATE AND VERIFY THE ACTUAL LOCATION AND DEPTH OF ALL EXISTING UNDERGROUND FACILITIES AT LEAST 48 HOURS IN ADVANCE OF THE PERFORMANCE OF ANY WORK.

APPROVALS

George Cervantes 5-8-08
JORGE CERVANTES, PE# 13977, PDE DATE
CITY ENGINEER

APPROVAL OF THESE PLANS IS LIMITED TO THOSE IMPROVEMENTS CONSTRUCTED IN THE DEDICATED RIGHTS-OF-WAY AND/OR DEDICATED EASEMENTS. THIS APPROVAL DOES NOT AUTHORIZE THE CONSTRUCTION OF ANY IMPROVEMENTS THAT DEVIATE FROM ADOPTED STANDARDS AND/OR SPECIFICATIONS, EXCEPT THOSE SPECIFICALLY LISTED UNDER DEVIATIONS FROM STANDARD. THE ENGINEER SHALL RESOLVE ANY DEVIATION OTHER THAN THOSE LISTED IN DEVIATIONS FROM STANDARDS IN FAVOR OF THE UNIFORM STANDARD DRAWINGS AND SPECIFICATIONS CLARK COUNTY AREA NEVADA.

Doug Rankin 5-6-08
DOUG RANKIN, MCP, PLANNING MANAGER DATE
THIS PLAN MEETS THE APPLICABLE STANDARDS OF THE PLANNING AND DEVELOPMENT DEPARTMENT.

John Marshall 4-29-08
CITY FIRE MARSHAL DATE

LAS VEGAS VALLEY WATER DISTRICT
PROJECT # 115047
(SHEETS: C1, C2, U1 AND U2.) DATE

Robert Davis 4/29/08
SOUTHWEST GAS CORPORATION Robert Davis DATE

Jessica Martin 4/30/08
NEVADA POWER COMPANY DATE
NEVADA POWER COMPANY ACKNOWLEDGES THAT WE HAVE RECEIVED YOUR PLANS AND WILL PROVIDE SERVICE TO ALL ELECTRICAL NEEDS ASSOCIATED WITH THIS PROJECT. NEVADA POWER COMPANY RESERVES THE RIGHT TO ADDRESS ANY EXISTING OR FUTURE CONFLICTS ONCE THE FINAL DESIGN IS COMPLETED. THE NEW SERVICE AND THE RESOLUTION OF ANY CONFLICTS WILL BE ACCOMPLISHED PURSUANT TO THE NEVADA PUBLIC UTILITIES COMMISSION'S RULES AND REGULATIONS.

Pat Baltru 4/29/08
COX COMMUNICATIONS LAS VEGAS, INC. PAT BALTRU DATE

Frank [Signature] 4/29/08
EMBARQ DATE

THE AFFIXED ENGINEER APPROVAL DOES NOT ASSUME OR GUARANTEE LIABILITY FOR KNOWN OR UNKNOWN CONFLICTS WITH EXISTING OR PROPOSED IMPROVEMENTS. RESOLUTION OF ANY CONFLICT WILL BE ACCOMPLISHED PURSUANT TO LOCAL ORDINANCES, NEVADA REVISED STATUTES AND/OR PUBLIC UTILITY COMMISSION RULES AND REGULATIONS.

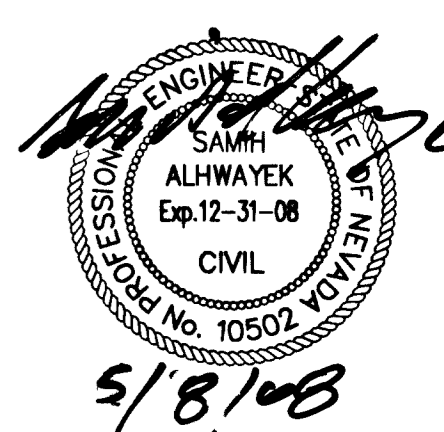
Stantec Consulting Inc.
7251 West Charleston Boulevard
Las Vegas, NV
89117
Tel: 702.258.0115
Fax: 702.258.4956
www.stantec.com



The Contractor shall verify and be responsible for all dimensions DO NOT scale the drawing - any errors or omissions shall be reported to Stantec without delay. The dimensions shall be reported to Stantec without delay.

Client/Project
FAIRFIELD CENTENNIAL, LLC
CENTENNIAL CONDOMINIUMS
LAS VEGAS, NV
The COVER SHEET

Permit-Seal



Project Number 188100435
File Name 00435c-001covr.dwg
Drawing No. C1
CLV# 26647/1074967
Revision Sheet

4/23/2008 4:53 PM
111154