

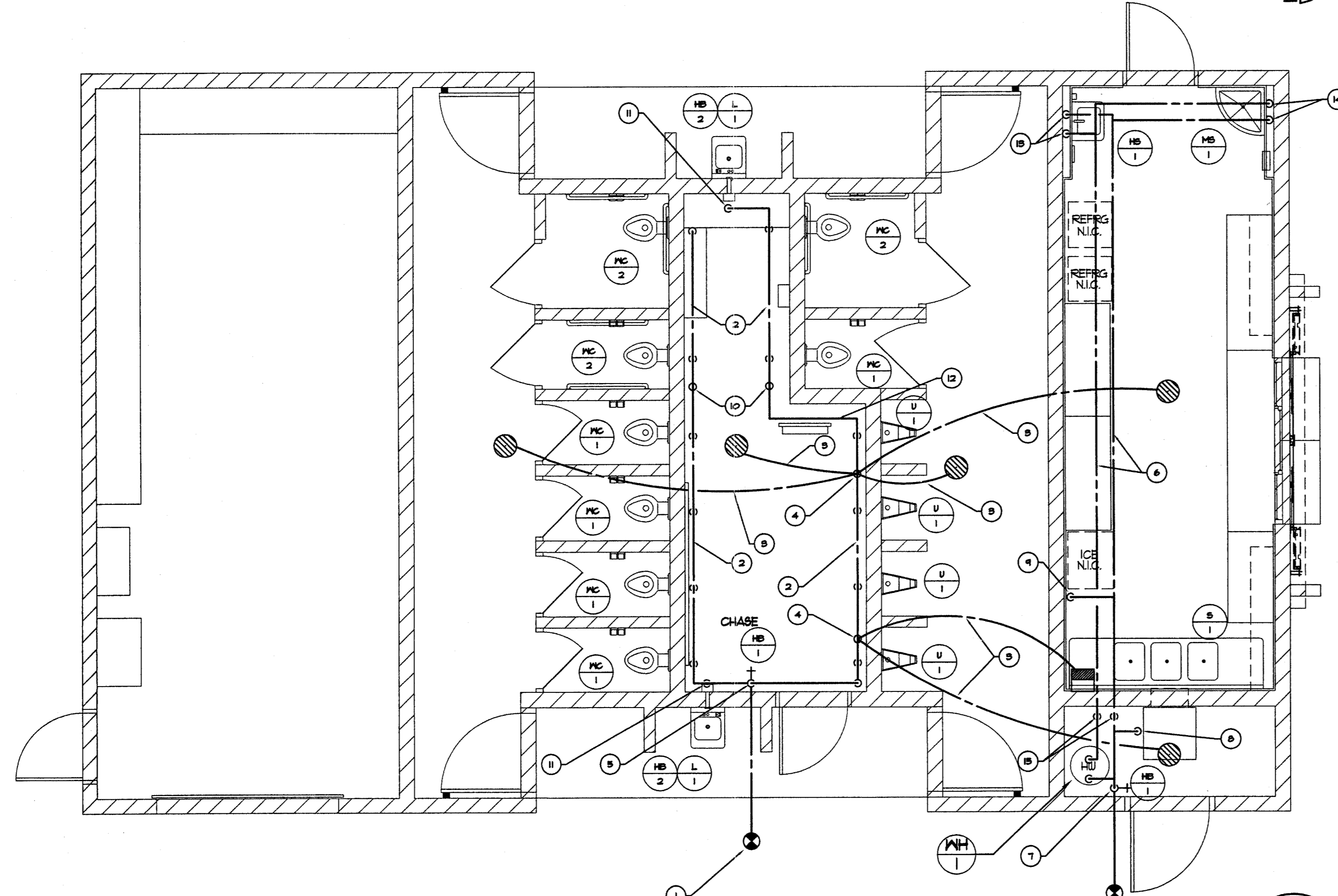
1 WASTE AND VENT PIPING PLAN
SCALE: 1/4" = 1'-0"
NORTH

GENERAL NOTES:

1. EXTEND DRAIN FROM EVAP COOLER AND SPILL INTO FLOOR SINK WITH 1" AIR GAP
2. CONNECT SINK DRAINS AND SPILL INTO FLOOR SINK WITH 1" AIR GAP

KEYED NOTES:

- 1 4" SANITARY SEWER PIPE BELOW GRADE FOR CONTINUATION SEE CIVIL DRAWINGS
- 2 TWO-WAY CLEANOUT
- 3 4" SANITARY SEWER AND 5" VENT HEADERS
- 4 4" SANITARY SEWER TO BELOW FLOOR WITH CLEAN-OUT
- 5 4" VENT THROUGH CEILING AND ROOF
- 6 4" SANITARY SEWER BELOW FLOOR / GRADE
- 7 5" WASTE BELOW FLOOR / GRADE
- 8 2" VENT BELOW FLOOR
- 9 2" VENT BELOW ROOF
- 10 5" SANITARY SEWER AND 2" VENT HEADER
- 11 2" VENT FROM BELOW TO BELOW ROOF
- 12 5" SANITARY SEWER TO BELOW FLOOR WITH CLEAN-OUT
- 13 2" VENT ABOVE CEILING
- 14 2" VENT THROUGH ROOF
- 15 (2) 2" VENT IN FURRING FROM BELOW FLOOR, 2" VENT UP TO ABOVE CEILING
- 16 2" WASTE IN FURRING DOWN TO BELOW FLOOR, 2" VENT IN FURRING UP TO ABOVE CEILING



2 WATER PIPING PLAN
SCALE: 1/4" = 1'-0"
NORTH

GENERAL NOTES:

1. PROVIDE DRAIN VALVE AT EACH LOW POINT OF WATER PIPING. SLOPE PIPING PROPERLY TO LOW POINT FOR SYSTEM DRAINING. NO POCKET ABOVE CEILING.

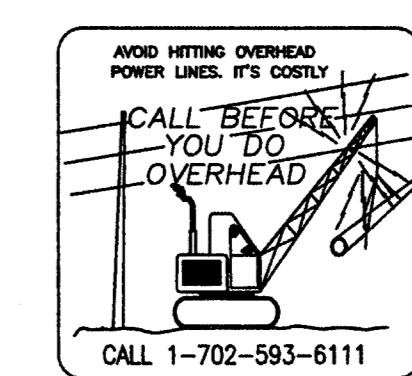
KEYED NOTES:

- 1 1/2" CH PIPE BELOW GRADE FOR CONTINUATION SEE CIVIL DRAWINGS
- 2 5" CH HEADER ON WALL @ 50" AFF. COORDINATE LOCATION WITH ELECTRICAL AND MECHANICAL EQUIPMENT, CONNECT TO EACH FIXTURE WITH BALL VALVE
- 3 1/2" BELOW FLOOR
- 4 TRAP PRIMER
- 5 4" CH FROM BELOW FLOOR WITH MAIN AND BRANCH SHUT-OFF VALVES
- 6 1/4" INSULATED CH @ 1" ABOVE CEILING
- 7 2" CH FROM BELOW FLOOR WITH MAIN SHUT OFF VALVE
- 8 5/4" CH CONNECT TO EVAP COOLER WITH BALL VALVE AND AIR GAP DEVICE
- 9 1/2" CH DOWN THROUGH CEILING, TERMINATE 4" BELOW CEILING WITH HELL PORT BALL VALVE, CONNECT TO ICE MACHINE THROUGH COOK FILTER, VERIFY CEILING PENETRATION LOCATION WITH ICE MAKER PROVIDER.
- 10 WATER HAMMER ARRESTOR
- 11 1" CH DOWN 1/2" TO LAV AND 5/4" TO HB-2
- 12 PIPING WITHOUT JOINT BEHIND ELECTRICAL PANE, COORDINATE WITH ELECTRICAL
- 13 1/2" CH @ 1" IN DOWN IN FURRING TO LOOSE KEY ANGLE STOPS ON WALL, CONNECT TO FAUCET WITH CHROME PLATED SUPPLY PIPES.
- 14 5/4" CH @ 1" IN DOWN IN FURRING TO HOP SINK FAUCET.
- 15 1" CH @ 1" IN DOWN TO HELL PORT BALL VALVES ON MECHANICAL ROOM WALL, CONNECT TO SINK FAUCETS THROUGH WALL.

PLANS APPROVED
PLUMBING/MECHANICAL
Building & Safety Dept.
City of Las Vegas, Nevada

MC NOV 13 2006

Does Not Include Structural, Electrical, Mechanical or Off-Site Improvements. Make No Change Without Approval. Plan is Not a Permit to Violate Any Ordinance



Avoid cutting underground utility lines. It's costly.
Call before you Dig.
1-800-227-2600
UNDERGROUND SERVICE ALERT (USA)



REVISIONS
CONSULTANT

Precision Design Group
108 Market St.
Henderson, NV 89015
Tel: (702) 307-0692
Fax: (702) 307-0693
Email: info@pdg-group.net

DEPARTMENT OF PUBLIC WORKS
Centennial Hills Park Phase 3
Restroom/Concession/Storage Building
PLUMBING PLANS



OWNER: CITY OF LAS VEGAS
DEPARTMENT OF PUBLIC WORKS
ARCHITECTURAL SERVICES

400 EAST STEWART AVENUE
LAS VEGAS, NEVADA 89103
PHONE: (702) 229-6535
FAX: (702) 384-6846
TDD: (702) 386-9108

DRAWN: AT
FILE: PLUMBING
DATE: July 20, 2006
SCALE: 1/4" = 1'-0"

BID NO: 06.1534.03
CLV DNG NO: 65065-3

SHT NO: RCS P1.01

110483

DRAWINGS AS INSTRUMENTS OF SERVICE ARE THE PROPERTY OF THE DESIGN PROFESSIONAL WHOSE NAME OF CERTIFICATION APPEARS ON THE DRAWINGS AND SPECIFICATIONS. ANY USE OR REPRODUCTION IN WHOLE OR IN PART WITHOUT WRITTEN CONSENT IS STRICTLY PROHIBITED. COPIES OF THE DRAWINGS AND SPECIFICATIONS REMAIN THE PROPERTY OF THE CLIENT AND SHALL BE RETURNED TO THE CLIENT UPON COMPLETION OF THE PROJECT. PROJECT # A C 033780