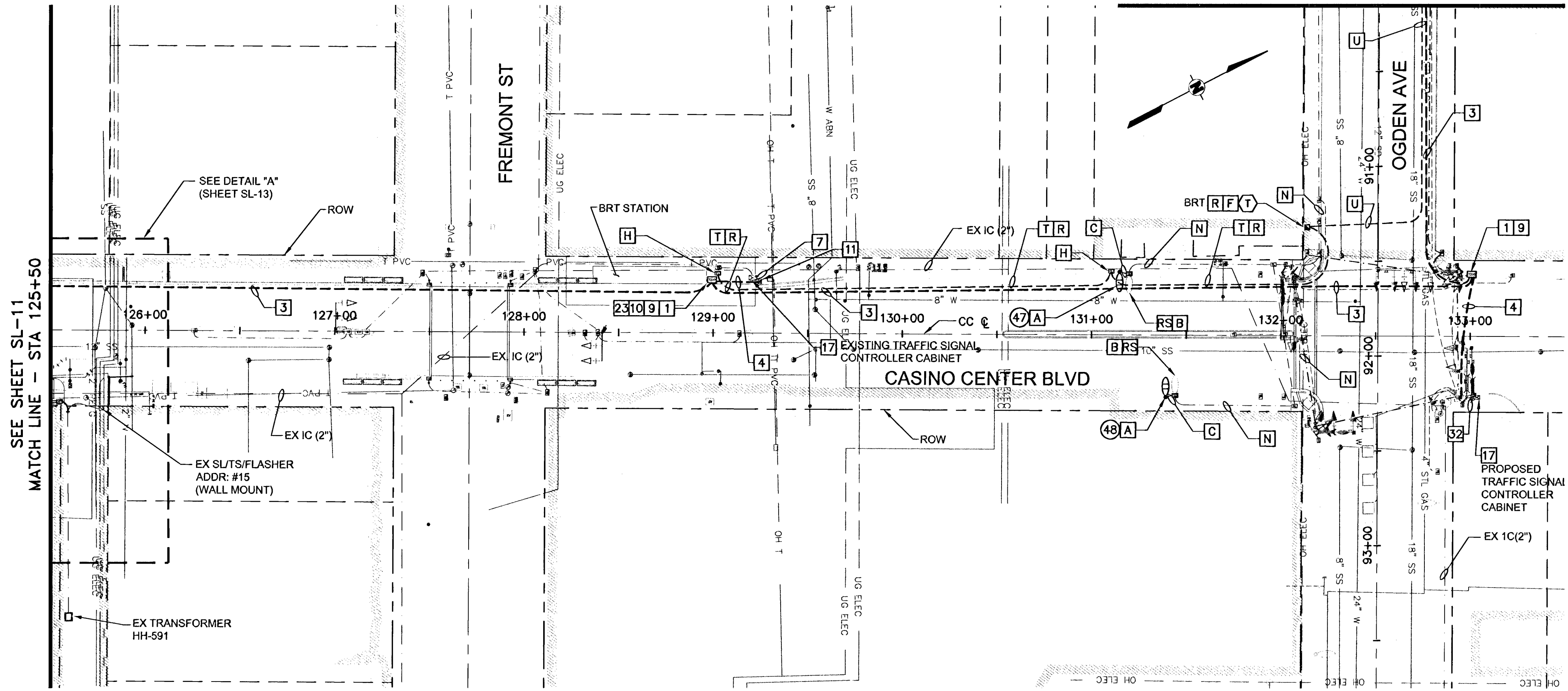
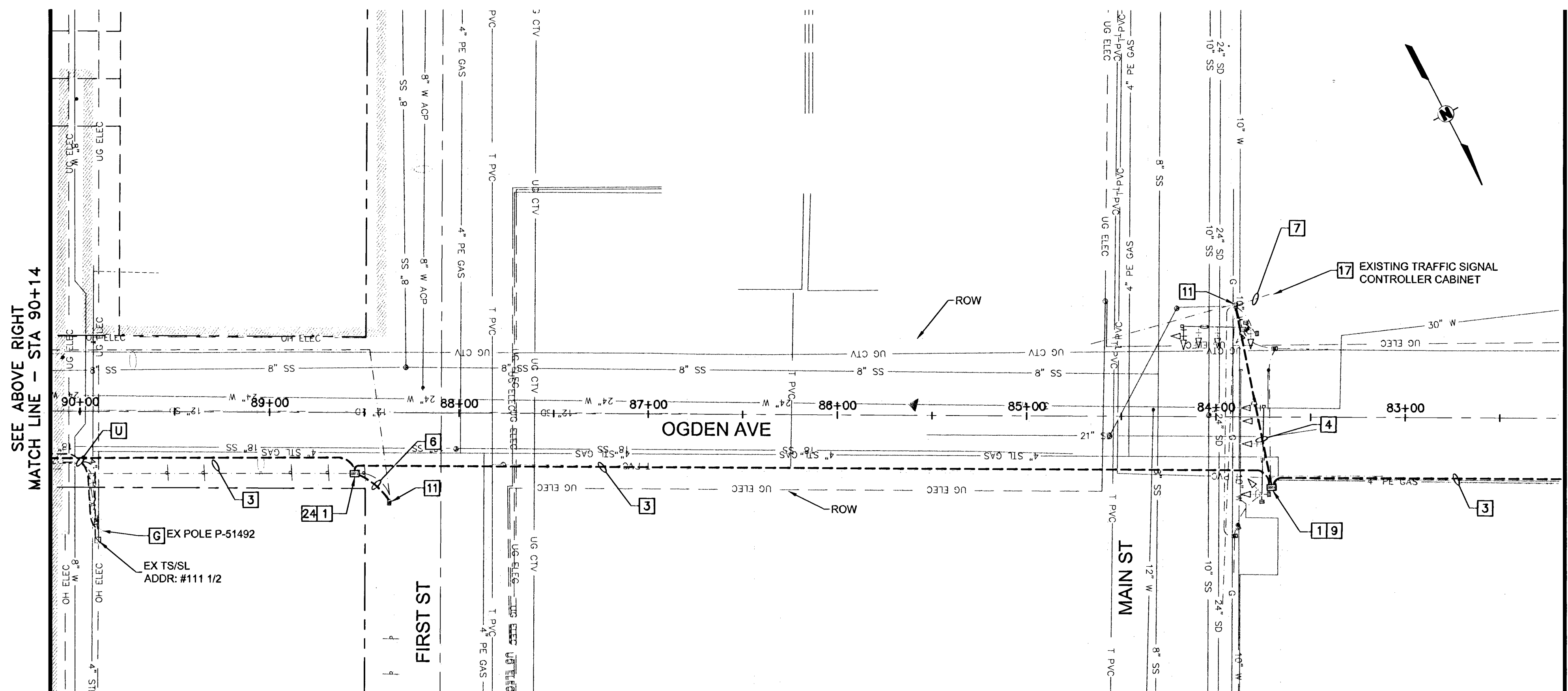


SEE BELOW LEFT  
MATCH LINE - STA 90+14



SEE SHEET SL-11  
MATCH LINE - STA 125+50

SEE ABOVE RIGHT  
MATCH LINE - STA 90+14

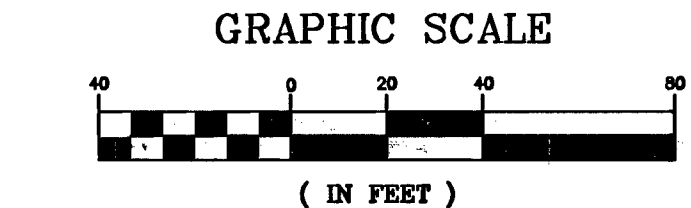
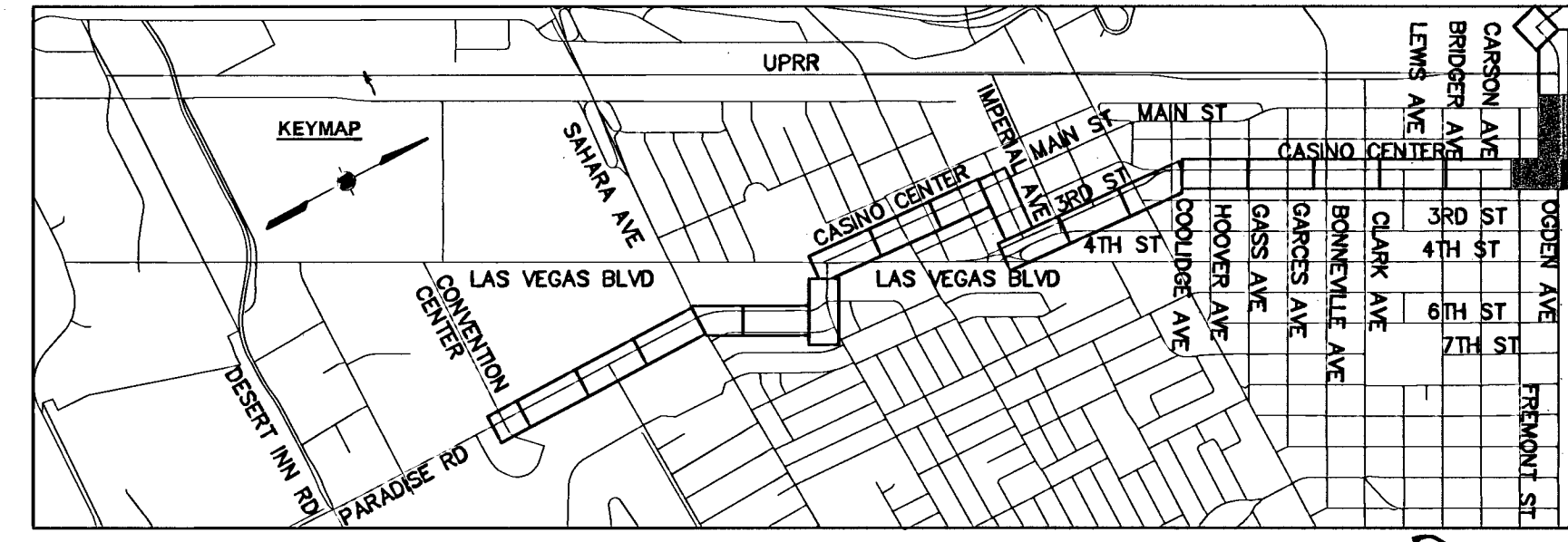


### FIBER OPTIC CONSTRUCTION NOTES

- 1 FURNISH AND INSTALL TYPE 200 PULL BOX MARKED "FIBER OPTIC" PER CCAUSD No. 404.133 AND 404.140.
- 3 FURNISH AND INSTALL 4" CONDUIT WITH 2-72 FIBER CABLES (BRT AND FAST), 1-6 PAIR PE39 #22 AWG CABLE AND PULL ROPE.
- 4 FURNISH AND INSTALL 4" CONDUIT WITH 1-12 FIBER FAST COMMUNICATIONS DISTRIBUTION CABLE ASSEMBLY, 1-6 PAIR PE39 #22 AWG CABLE AND PULL ROPE.
- 6 FURNISH AND INSTALL 4" CONDUIT WITH 1-6 PAIR PE39 #22 AWG CABLE AND PULL ROPE.
- 7 FURNISH AND INSTALL 1-12 FIBER COMMUNICATIONS DISTRIBUTION CABLE ASSEMBLY IN EXISTING CONDUIT.
- 9 FURNISH AND INSTALL UNDERGROUND SPLICE CLOSURE FOR FAST FIBER OPTIC CABLE (SEE SHEETS SL-20 AND SL-21 FOR SPLICE DETAILS).
- 10 FURNISH AND INSTALL UNDERGROUND SPLICE CLOSURE FOR BRT FIBER OPTIC CABLE (SEE SHEETS SL-20 AND SL-21 FOR SPLICE DETAILS).
- 11 INTERCEPT EXISTING PULL BOX AND INSTALL NEW CONDUIT.
- 17 SEE TRAFFIC SIGNAL PLAN FOR CONDUIT AND EQUIPMENT DETAILS AT THIS LOCATION.
- 23 SEE TATE SNYDER KIMSEY ARCHITECTS BRT STATION DESIGN PLANS FOR BRT STATION COMMUNICATION CONDUIT AND CABLING ON BRT STATION PLATFORM AND BRT COMMUNICATIONS DISTRIBUTION CABLE ASSEMBLY RUN(S) TO BRT STATION PLATFORM FROM THE TYPE 200 OR P30 PULL BOX SHOWN ON THESE PLANS.
- 24 COIL 100' OF 72 FIBER CABLE IN PULL BOX.
- 32 FURNISH AND INSTALL 1-12 FIBER FAST COMMUNICATIONS DISTRIBUTION CABLE ASSEMBLY IN CONDUIT WITH PROPOSED CABLES.

### STREETLIGHT and ELECTRICAL SERVICE CONSTRUCTION NOTES

- A INSTALL STREET LIGHT ASSEMBLY (CENTENNIAL STANDARDS) AND FOUNDATION (SEE DETAILS, SHEET SL-14). SEE PLANS FOR STREET LIGHT CIRCUIT CONNECTIVITY.
- B INTERCEPT EXISTING STREET LIGHTING CONDUIT. FURNISH AND INSTALL No. 3 1/2 PULL BOX MARKED "STREET LIGHT" PER CCAUSD No. 323. BACK PULL EXISTING CONDUCTORS TO NEAREST POLE, PULL NEW CONDUCTORS TO POLE(S) AND SPLICE NEW TO EXISTING CONDUCTORS IN POLE BASE.
- C INSTALL 2-#4 (BLACK +, RED -) THW AND 1-#8 THW (GREEN GROUND) STREET LIGHTING CONDUCTORS IN 2" PVC CONDUIT.
- F FURNISH AND INSTALL 200 AMP 120/240 VAC SERVICE PEDESTAL. PROVIDE THE PEDESTAL WITH EQUIPMENT AS SHOWN IN SERVICE METER TABLE ON SHEET SL-16. SEE TRAFFIC SIGNAL OR BRT STATION PLATFORM DESIGN SHEETS FOR PROPOSED SIGNAL SERVICE CONNECTION TO CONTROLLER CABINET. SEE ATTACHED NEVADA POWER COMPANY ELECTRICAL SERVICE DESIGN PLANS, PROJECT ID 184493 FOR ELECTRICAL SERVICE CONNECTION DETAILS.
- G FURNISH AND INSTALL NEVADA POWER APPROVED SERVICE CONDUIT OR RISER FOR CONNECTION TO PROPOSED SERVICE POINT. SEE ATTACHED NEVADA POWER COMPANY ELECTRICAL SERVICE DESIGN PLANS, PROJECT ID 184493 FOR ELECTRICAL SERVICE CONNECTION.
- H FURNISH AND INSTALL No. 3 1/2 PULL BOX WITH "ELECTRICAL" ON LID, PER CCAUSD No. 323.
- N EXISTING CONDUIT AND CONDUCTORS OR STREET LIGHTING EQUIPMENT TO REMAIN, PROTECT IN PLACE.
- R SEE TATE SNYDER KIMSEY ARCHITECTS BRT PLATFORM ELECTRICAL DESIGN PLANS FOR BRT STATION ELECTRICAL CONDUIT AND CABLING ON BRT STATION PLATFORM AND CONDUCTOR AND CABLE RUNS FROM THE SERVICE PEDESTAL SHOWN ON THESE PLANS TO PLATFORM LOAD LOCATIONS.
- T FURNISH AND INSTALL 3" CONDUIT WITH 1-#8 GROUND/TRACER WIRE AND PULL ROPE.
- U FURNISH AND INSTALL 3" CONDUIT WITH 3-#1/0 AWG, 600 VOLT COPPER WIRE WITH THW-2 OR XHHW-2 INSULATION BETWEEN SERVICE POINT AND SERVICE PEDESTAL PER NEVADA POWER REQUIREMENTS.
- RS REMOVE AND SALVAGE EXISTING STREET LIGHT POLE AND EQUIPMENT. SEE NOTE (THIS SHEET) FOR DELIVERY REQUIREMENTS. REMOVE POLE FOUNDATION 24" BELOW FINISHED GRADE.



**811 SAFETY ALERT**  
Call Before You Overhead  
Call Before you dig

**UnderGround**  
1-702-432-5300  
1-702-227-2929

DATE: 04/02/08	REVISIONS: 1 Replace Entire Sheet
DATE: JANUARY, 2008	DESIGNED BY: RMC/KAA
SCALE: 1" = 40'	DRAWN BY: CJB
 <b>Kimley-Horn and Associates, Inc.</b> Engineering, Planning, and Environmental Consultants 2080 E. Flamingo Road, Suite 210, Las Vegas, NV 89119 PH: (702) 734-4848	
<b>DEPARTMENT OF PUBLIC WORKS</b> PROJECT: CASINO CENTER BUS RAPID TRANSIT SHEET: STREET LIGHTING AND FIBER OPTICS	
SHEET NO. SL-12 SHEET OF 100 DRAWING NO. 107V4882	

Apr 02, 2008 - 11:24am - USER: maria.garcia  
 K:\hvac\work\0925256\012\_Casino BRT\CAD\256012SL12.dwg

125128

NOTE:  
 ALL STREETLIGHT AND TRAFFIC SIGNAL EQUIPMENT THAT IS TO BE SALVAGED SHALL BE RETURNED TO THE CLV EAST SERVICE YARD. PROVIDE 24 HOUR NOTICE PRIOR TO DELIVERY. CALL 702-229-3661 TO SCHEDULE DELIVERY TIME. CONTRACTOR MUST HAVE A MEANS TO UNLOAD EQUIPMENT. CONTRACTOR SHALL BE RESPONSIBLE FOR ANY DAMAGE TO EQUIPMENT AND MATERIALS INCURRED IN THIS PROCESS.

⊗ STREET LIGHT POLE ID NUMBER (SEE SHEET SL-16).

REV-1