

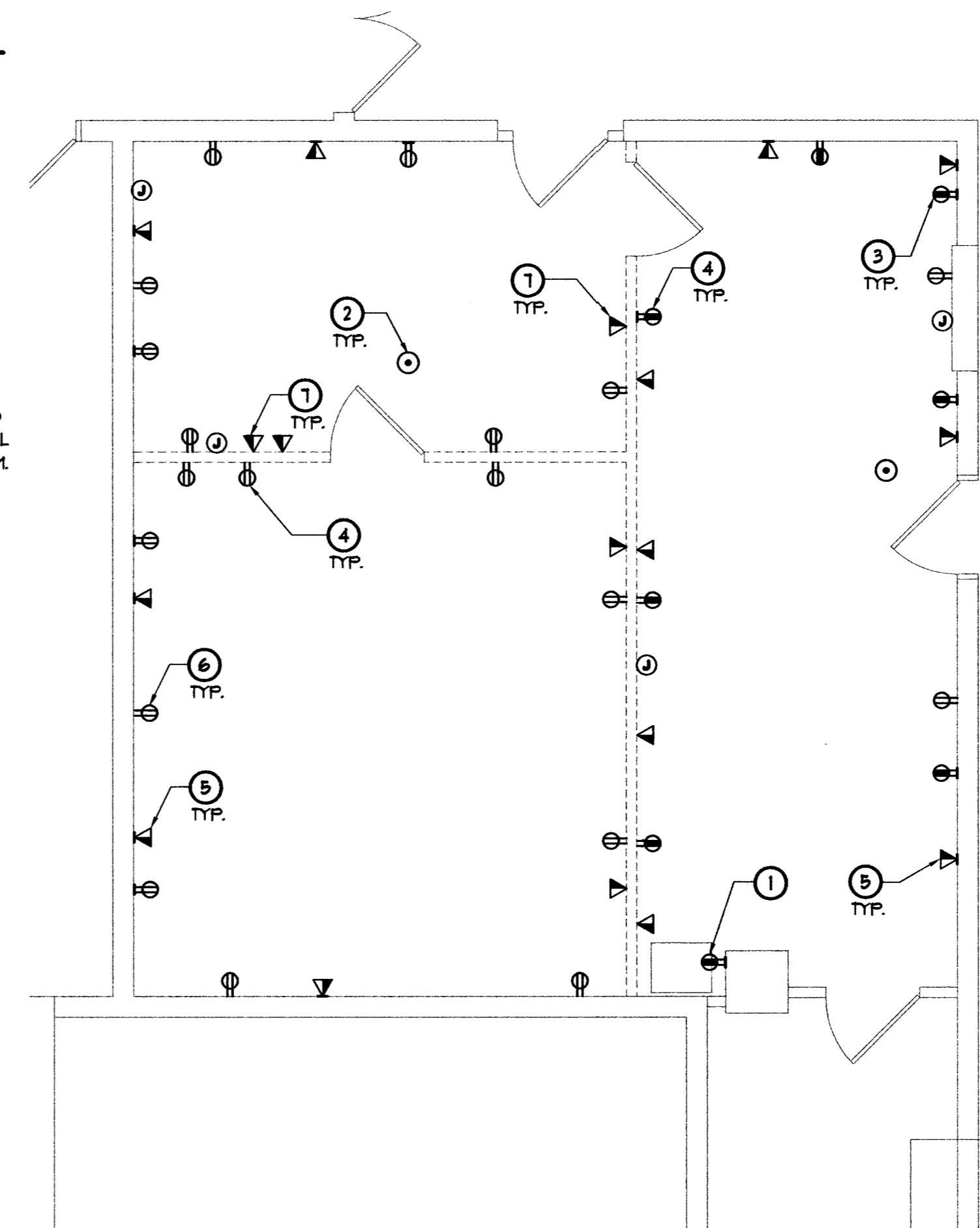
New Electrical Power Plan

Scale: 1/8" = 1'-0"



New Power Plan Notes

- 1 EXISTING RECEPTACLE WITH DESIGNATED CIRCUIT NUMBER AS SHOWN.
- 2 J-BOX # 18" AFF FOR POWER BASE FEED TO IT STATION, REUSE/COORDINATE WITH EXISTING ABOVE CEILING CONDUIT FOR HOME RUN. COORDINATE WITH MODULAR FURNITURE INSTALLATION FOR EXACT LOCATION OF BASE FEED J-BOX REQUIRED.
- 3 J-BOX # 18" AFF FOR VOICE/DATA BASE FEED TO IT STATION, REUSE/COORDINATE WITH EXISTING ABOVE CEILING CONDUIT FOR HOME RUN. COORDINATE WITH MODULAR FURNITURE INSTALLATION FOR EXACT LOCATION OF BASE FEED J-BOX REQUIRED.
- 4 PROVIDE SURFACE MOUNTED VOICE/DATA OUTLET PER CITY IT STD. COORDINATE WITH EXISTING ABOVE CEILING CONDUIT FOR HOME RUN.
- 5 CIRCUITS 4 & 6 ARE REUSED CIRCUITS AFTER THIS DEMO. EXISTING LOAD ON CIRCUIT 2 NEEDS TO BE REROUTED TO CIRCUIT 23 ON THE SAME PANEL. PPBEC LOCATED AT THE OLD PUMP ROOM NEXT TO THE MAIN PBX ROOM. PROVIDE MATCHING 20 AMP SINGLE POLE BREAKER FOR REROUTED CIRCUIT.
- 6 REPLACE EXISTING DUPLEX RECEPTACLE WITH QUADRAPLEX IN PLACE.



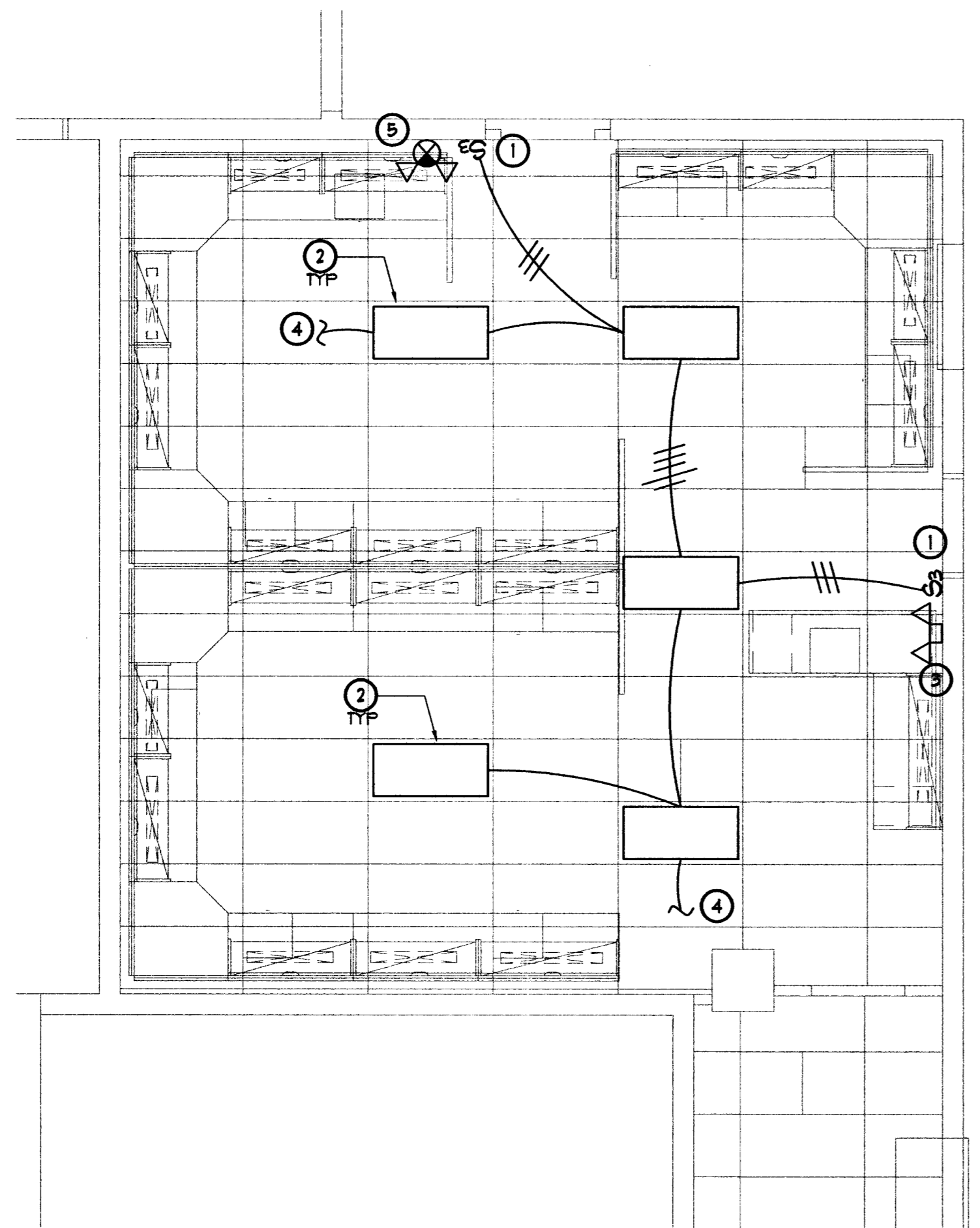
Electrical Power Demolition Plan

Scale: 1/8" = 1'-0"



Demo Power Plan Notes

- 1 EXISTING SURFACE MOUNTED POWER RECEPTACLE TO REMAIN.
- 2 EXISTING FLOOR OUTLET TO BE ABANDONED. REMOVE WIRES AND OUTLET, COVER FLOOR BOX WITH BLANK COVER PLATE.
- 3 EXISTING SURFACE MOUNTED POWER RECEPTACLE TO BE REMOVED.
- 4 EXISTING POWER RECEPTACLE TO BE REMOVED AS WALL DEMOLITION REQUIRES. VERIFY WITH ARCHITECTURAL DUGS FOR THE EXTENDS OF DEMOLITION REQUIRED.
- 5 EXISTING SURFACE MOUNTED VOICE/DATA OUTLET TO BE REMOVED. VERIFY WITH IT FOR REUSE OF EXISTING HOME RUNS.
- 6 EXISTING RECESS MOUNTED POWER RECEPTACLE TO REMAIN.
- 1 EXISTING VOICE/DATA OUTLET TO BE REMOVED AS WALL DEMOLITION REQUIRES. COORDINATE WITH IT FOR REUSE OF EXISTING HOME RUNS. VERIFY WITH ARCHITECTURAL DUGS FOR THE EXTENDS OF DEMOLITION REQUIRED.



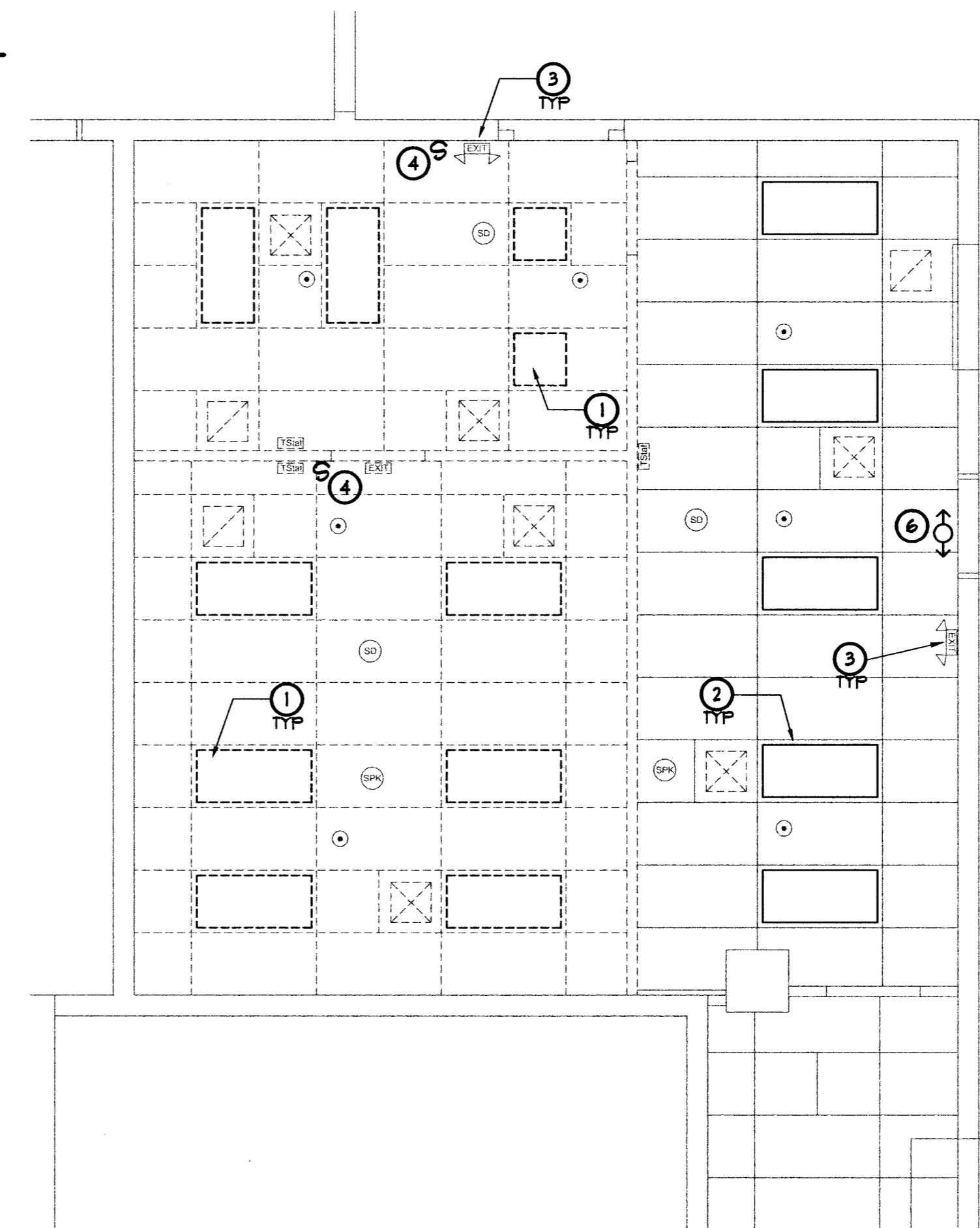
New Electrical Lighting Plan

Scale: 1/8" = 1'-0"



New Ltg Plan Notes

- 1 INSTALL 3-WAY SWITCH # 48" AFF & PROVIDE WIRING AS SHOWN
- 2 NEW LOCATION FOR THE REUSED LIGHT FIXTURE. RETROFIT FIXTURE TO 2 POS278 LAMPS & 1 GE-232-MAX-MULTRA BALLAST
- 3 INSTALL NEW EMERGENCY EGRESS LIGHT UNIT COOPER LIGHTING - SURE-LITES CAT* CCT. CONNECT BACK TO EXISTING EXIT SIGN CIRCUIT IN PLACE.
- 4 CONNECT BACK TO EXISTING LIGHTING CIRCUIT FOR CIRCUIT CONTINUITY
- 5 INSTALL NEW EXIT/EMERGENCY COMBO UNIT COOPER LIGHTING - SURE-LITES CAT* CCT/ROUNDHEAD W/MATCHING MOUNTING BRACKET. CONNECT BACK TO EXISTING EXIT SIGN CIRCUIT IN PLACE



Electrical Lighting Demolition Plan

Scale: 1/8" = 1'-0"




Demo Ltg Plan Notes

- 1 EXISTING LIGHT FIXTURE TO BE REMOVED
- 2 EXISTING 2X4 LIGHT FIXTURE TO BE MODIFIED AND RELOCATED
- 3 EXISTING EXIT/EGRESS LIGHT TO BE REMOVED
- 4 EXISTING WALL SWITCH TO BE REMOVED
- 5 NOT USED
- 6 EXISTING CEILING MOUNTED MOTION SENSOR TO BE REMOVED

109997

AS BUILT



DEPARTMENT OF FIELD OPERATIONS

REVISIONS CONSULTANT	City Hall - Basement IT Support Remodel Electrical Power Plan Electrical Lighting Plan
OWNER: CITY OF LAS VEGAS DEPARTMENT OF FIELD OPERATIONS FACILITIES MANAGEMENT 3304 EAST BONANZA ROAD LAS VEGAS, NEVADA 89101 PHONE: (702) 229-8520 FAX: (702) 382-0619 TDD: (702) 386-9108	
DRAWN: JJ FILE: El-basement DATE: November 2007 SCALE: As noted BID NO: CLDWG NO: 521-250-1T CITY NO:	<h1 style="font-size: 2em; margin: 0;">E1</h1>

DRAWINGS OR INSTRUMENTS OF SERVICE ARE THE PROPERTY OF THE DESIGN PROFESSIONAL. THESE DRAWINGS OR INSTRUMENTS OF SERVICE ARE NOT TO BE REPRODUCED OR TRANSMITTED IN ANY FORM OR BY ANY MEANS, ELECTRONIC OR MECHANICAL, INCLUDING PHOTOCOPYING, RECORDING, OR BY ANY INFORMATION STORAGE AND RETRIEVAL SYSTEM, WITHOUT THE WRITTEN PERMISSION OF THE DESIGN PROFESSIONAL. THE USER OF THESE DRAWINGS OR INSTRUMENTS OF SERVICE AGREES TO HOLD THE DESIGN PROFESSIONAL HARMLESS FROM AND AGAINST ALL CLAIMS, DAMAGES, LOSSES AND EXPENSES, INCLUDING REASONABLE ATTORNEY'S FEES, THAT MAY BE ASSERTED AGAINST THE DESIGN PROFESSIONAL AS A RESULT OF THE USER'S REPRODUCTION OR TRANSMISSION OF THESE DRAWINGS OR INSTRUMENTS OF SERVICE.