

- WATER CONSTRUCTION NOTES:**
- ALL WATER CONSTRUCTION TO BE DONE IN ACCORDANCE WITH "UNIFORM DESIGN AND CONSTRUCTION STANDARDS FOR WATER DISTRIBUTION SYSTEMS (U.D.A.C.S.)" LATEST EDITION.
 - NOT ALL NOTES USED ON THIS SHEET -
- INSTALL 45° BEND W/THRUST BLOCK (SAME SIZE AS PIPE) PER U.D.A.C.S. PLATE No. 5.
 - INSTALL 90° BEND W/THRUST BLOCK (SAME SIZE AS PIPE) PER U.D.A.C.S. PLATE No. 5.
 - INSTALL TEE (SAME SIZE AS PIPES).
 - INSTALL MECHANICAL JOINT TAPPING SLEEVE & TAPPING VALVE (SAME SIZE AS PIPE) PER U.D.A.C.S. PLATE No. 22.
 - INSTALL GATE VALVE (SAME SIZE AS PIPE).
 - INSTALL CAP (SAME SIZE AS PIPE).
 - INSTALL BLOW-OFF ASSEMBLY (SAME SIZE AS PIPE) PER U.D.A.C.S. PLATE No. 4.
 - STUB & CAP WATER SERVICE. REFER TO PLUMBING PLANS FOR CONTINUATION.
 - INSTALL FIRE HYDRANT W/GATE VALVE PER U.D.A.C.S. PLATE No. 7.

SANITARY SEWER MANHOLE SCHEDULE

SSMH#	RIM	INV IN	INV OUT
SSMH#1	96.22	88.25	(85.50)
SSMH#2	100.68	94.27	94.07
SSMH#3	100.66	N/A	94.81
SSMH#4	99.66	94.90	94.70
SSMH#5	100.88	96.06	95.85
SSMH#6	101.63	96.96	96.76
SSMH#7	101.40	96.03	95.83
SSMH#8	102.06	97.38	97.18
SSMH#9	101.20	96.71	96.51
SSMH#10	101.50	98.13	97.93

EXISTING FIRE FLOW CALCULATIONS

BASED ON:	EXISTING SCHOOL	EXISTING GYM
SQUARE FOOTAGE:	105,000 SQ. FT.	14,570 SQ. FT.
LARGEST AREA BETWEEN 4 HR. AREA SEPARATION WALL:	-	-
BUILDING HEIGHT:	45.00'	35.00'
NUMBER OF STORIES:	2	2
TYPE OF CONSTRUCTION:	II-A	II-FR
EXPOSURES:	-	-
SPRINKLER SYSTEM:	YES	YES
OCCUPANCY:	E	E
ROOF CONSTRUCTION:	SINGLE PLY	SINGLE PLY
FLOW REQUIRED @ 20 PSI RESIDUAL:	2,375	1,500
MAX. STORAGE HEIGHT:	-	-

EX. STATIC WATER PRESSURE IS 55.0± psi IN STREET.

BASIS OF BEARINGS

SOUTH 89°52'09" EAST BEING THE NORTH LINE OF THE NORTHEAST QUARTER (NE 1/4) OF SECTION 29, TOWNSHIP 20 SOUTH, RANGE 61 EAST, M.D.M. CLARK COUNTY, NEVADA AS SHOWN BY MAP THEREON ON FILE IN BOOK 48, PAGE 77 OF PLATS IN THE CLARK COUNTY RECORDERS OFFICE, CLARK COUNTY, NEVADA.

BENCHMARK

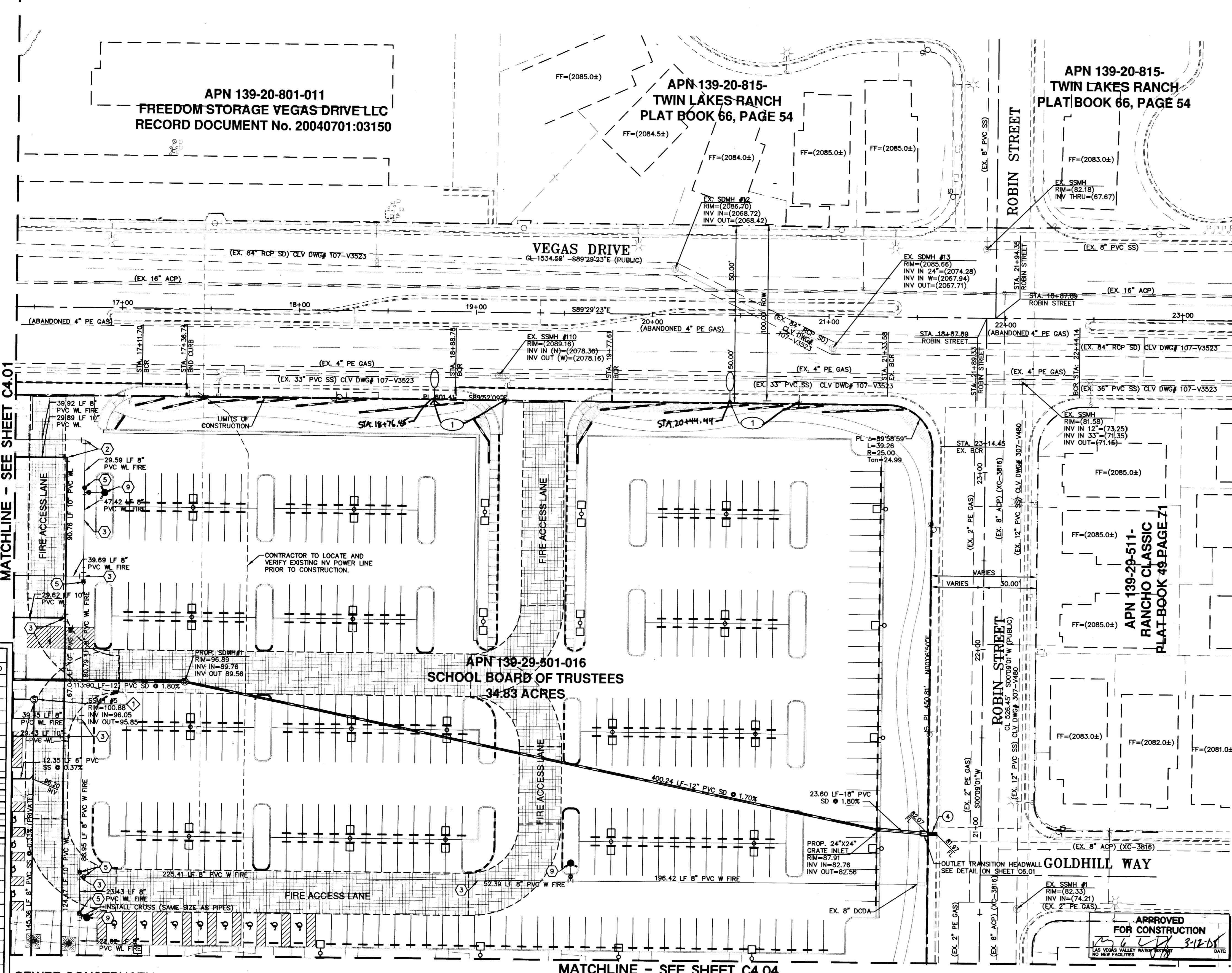
CITY OF LAS VEGAS NO. 0LV0129NNW6
 RIVET & PLATE IN TOP OF CURB @ SE CORNER OF VEGAS DR. & TUMBLEWEED.
 ELEV. = 642.5245 (METRIC)
 2108.02 (U.S. SURVEY FEET) "NAVD 88"

SAFETY ALERT

Call before you dig. Call before you dig. Call before you dig. Call before you dig.

1-702-455-7511

C4.02



- SEWER CONSTRUCTION NOTES: STORM DRAIN**
- NOT ALL NOTES USED ON THIS SHEET -
 - INSTALL 48" SANITARY SEWER MANHOLE PER C.C.A.U.S.D. No. 403 WITH CONCRETE COLLAR PER C.C.A.U.S.D. No. 408. REFER TO C.C.A.U.S.D. No. 409 FOR MANHOLE COVER AND RING.
 - STUB SANITARY SEWER SERVICE. REFER TO PLUMBING PLANS FOR CONTINUATION.
 - INSTALL SEWER CLEAN-OUT PER DETAIL 19 ON SHEET C6.01.
 - PROPOSED GREASE INTERCEPTOR LOCATION. REFER TO PLUMBING PLANS FOR SPECIFICATIONS.
 - PROPOSED ACID WASH TANKS. REFER TO PLUMBING PLANS FOR SPECIFICATIONS.
 - INSTALL 90° SANITARY SEWER MANHOLE PER C.C.A.U.S.D. No. 403 WITH CONCRETE COLLAR PER C.C.A.U.S.D. No. 408. REFER TO C.C.A.U.S.D. No. 409 FOR MANHOLE COVER AND RING. INSTALL T-LOCK.
- TRAFFIC NOTES:**
- RELOCATE STREET LIGHT DOWN TO EXISTING FOUNDATION 24" MIN. CONNECT CONDUIT AND DETAIL 11. MAKE

NOTE:

CONTRACTOR TO INCLUDE COST OF UNDERGROUND UTILITY DETECTION COMPANY TO LOCATE AND MARK ALL EXISTING UTILITIES PRIOR TO ANY DEMOLITION OR EXCAVATION. ENGINEER TO BE PROVIDED WITH AS-BUILT SKETCH OF EXISTING UTILITIES, AND IS TO BE NOTIFIED IMMEDIATELY OF ANY POTENTIAL CONFLICTS WITH PROPOSED UTILITIES AND/OR FINISHED GRADES.

NOTE:

REMOVAL OF EXISTING ACTIVE UTILITIES TO BE PHASED AS DIRECTED BY OWNER.

CITY OF LAS VEGAS FIRE DEPARTMENT APPROVAL

By: *Edna Bell* DATE: 7/1/08

APPROVAL OF THESE PLANS SHALL NOT BE CONSTRUED TO BE A PERMIT FOR, OR AN APPROVAL OF, ANY VIOLATION OF ANY OF THE PROVISIONS OF THE STATE OR COUNTY LAWS. FIRE FLOW 3,125 GPM AT 20 P.S.I. RESIDUAL.

FIRE FLOW CALCULATIONS

	GLOBAL STUDIES	PUBLIC SERVICES/PE	ADMIN/RESOURCE	COMMONS	BUSINESS INFO/TECH
SQUARE FOOTAGE:	13,990 SQ. FT.	37,418 SQ. FT.	17,062 SQ. FT.	10,398 SQ. FT.	17,831 SQ. FT.
LARGEST AREA BETWEEN 4 HR. AREA SEPARATION WALL:	-	-	-	-	-
BUILDING HEIGHT:	37.00'	40.00'	37.00'	23.50'	37.00'
NUMBER OF STORIES:	1	2	2	1	2
TYPE OF CONSTRUCTION:	V-B	II-B	V-B	V-B	V-B
EXPOSURES:	-	-	-	-	-
SPRINKLER SYSTEM:	YES	YES	YES	YES	YES
OCCUPANCY:	E	E	E	E	E
ROOF CONSTRUCTION:	SINGLE PLY/CLASS A	SINGLE PLY/CLASS A	SINGLE PLY/CLASS A	SINGLE PLY/CLASS A	SINGLE PLY/CLASS A
FLOW REQUIRED @ 20 PSI RESIDUAL:	1,625	2,125	1,750	1,500	1,750
MAX. STORAGE HEIGHT:	16'	16'	16'	16'	16'

EX. STATIC WATER PRESSURE IS 55.0± psi IN STREET.

SEWER CONTRIBUTION:

AVERAGE DAILY FLOW 0.00376 MGD
 PEAK HOURLY FLOW 58.0 GPH

LEGEND

DESCRIPTION	EXISTING	PROPOSED
UTILITIES		
B.O. VALVE		
FIRE HYDRANTS		
CLEAN OUT		
GATE VALVE		
METER		
REDUCER		
CAP		
11.25' ELBOW		
22.5' ELBOW		
45' ELBOW		
90' ELBOW		
CROSS		
TEE		
MANHOLES		
ELECTRICAL		
SANITARY SEWER		
STORM DRAIN		
TELEPHONE		
STREET LIGHTS		
100W HPS STLT.		
150W HPS STLT.		
200W HPS STLT.		
250W HPS STLT.		
400W HPS STLT.		
GRADING		
SPOT ELEV.	(12.34)	12.34
SLOPE	(1.2%)	1.23%
5' CONT.	(2005)	2005
1' CONT.	(2007)	2007
SITE		
SIGN		
"L" CURB		
"A" CURB		
EDGE OF PAVT.		
FLOW LINE		
LINE TYPES		
CL OR SECTION LINE		
PROPERTY LINE		
RIGHT OF WAY LINE		
EASEMENT LINE		
SANITARY LINE		
FLOW LINE		
SHADES		
HEAVY AC PAVEMENT		
LIGHT AC PAVEMENT		
CONCRETE DRIVEWAY		

Civilworks Inc

Engineering with "sensible" solutions tailored to your "specific" needs.

7625 Dean Martin Drive, Suite #101 • Las Vegas, NV 89139-5975
 Office # (702) 876-3474 • Fax # (702) 876-1323

CENTRAL CAREER & TECH SCHOOL

© ROBIN ST. AND VEGAS DR.

OWNER/DEVELOPER: CLARK COUNTY SCHOOL DISTRICT
 CONSTRUCTION MANAGEMENT DIVISION
 4828 S. PEARL STREET
 LAS VEGAS, NEVADA 89121
 (702) 798-9889

TILITY & STREETLIGHT PLAN - PAGE 2

DATE: 7/1/08
 DRAWN BY: EDNA BELL
 CHECKED BY: [Signature]
 REVISIONS:

PRINTS REQUIRE ENGINEER'S SEAL AND SIGN FOR PROOF OF VALIDITY

PROFESSIONAL ENGINEER - STATE OF NEVADA

BRANDON A. POTTS
 Exp: 12/31/09
 CIVIL
 No. 13121

C4.02