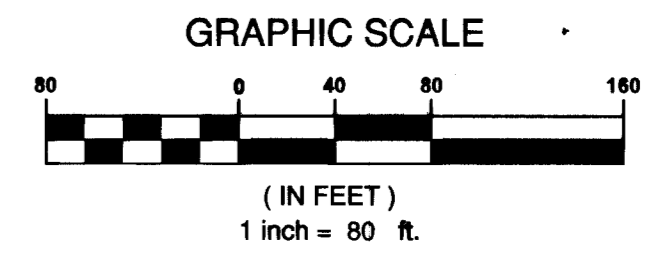
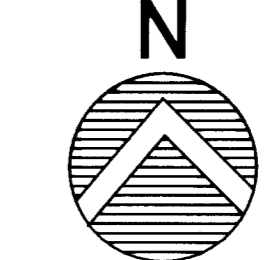
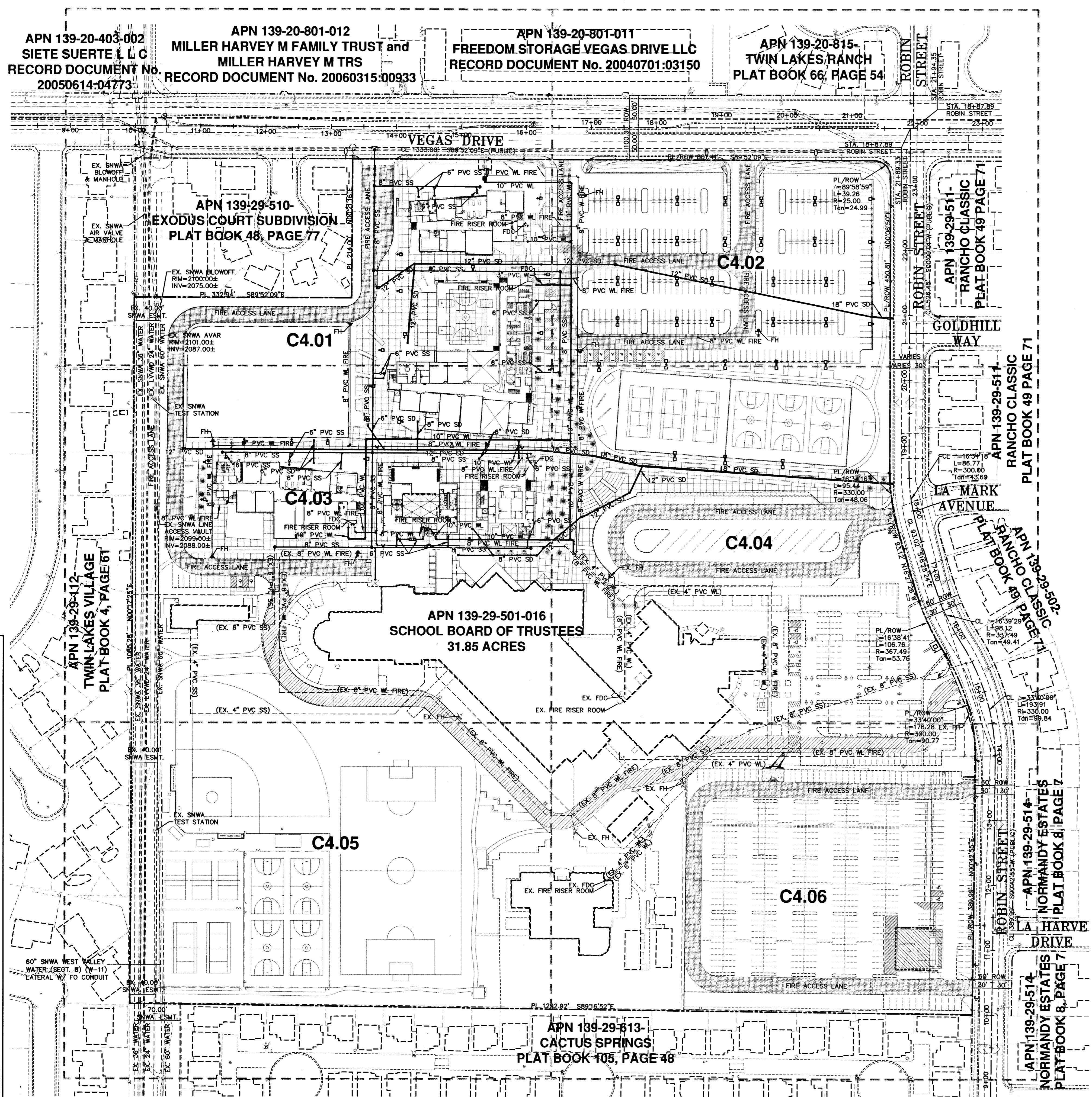


APN 139-20-403-002
SIETE SUERTE L L C
RECORD DOCUMENT No. 20050614-04773

APN 139-20-801-012
MILLER HARVEY M FAMILY TRUST and
MILLER HARVEY M TRS
RECORD DOCUMENT No. 20060315-00933

APN 139-20-801-011
FREEDOM STORAGE VEGAS DRIVE LLC
RECORD DOCUMENT No. 20040701-03150

APN 139-20-815-
TWIN LAKES RANCH
PLAT BOOK 66, PAGE 54



LEGEND		
DESCRIPTION	EXISTING	PROPOSED
UTILITIES		
B.O. VALVE		
FIRE HYDRANTS		
CLEAN OUT		
GATE VALVE		
METER		
REDUCER		
CAP		
11.25' ELBOW		
22.5' ELBOW		
45' ELBOW		
90' ELBOW		
CROSS		
TEE		
MANHOLES		
ELECTRICAL		
SANITARY SEWER		
STORM DRAIN		
TELEPHONE		
STREET LIGHTS		
100W HPS STLT.		
150W HPS STLT.		
200W HPS STLT.		
250W HPS STLT.		
400W HPS STLT.		
GRADING		
SPOT ELEV.	(12.33)	12.34
SLOPE	(1.2%)	1.23%
5' CONT.	-(2005)	2005
1' CONT.		2007
SITE		
1" CURB		
4" CURB		
EDGE OF PAVT.		
WALL		
LINE TYPES		
CL OR SECTION LINE		
PROPERTY LINE		
RIGHT OF WAY LINE		
EASEMENT LINE		
SAWCUT LINE		
FLOW LINE		
SHADES		
HEAVY AC PAVEMENT		

SNWA CONSTRUCTION NOTES:
CONTRACTOR SHALL FIELD LOCATE AND PROTECT ALL SNWA/SNWS APPURTENANCES INCLUDING, BUT NOT LIMITED TO AV/AR, ACCESS MANWAYS AND CATHODIC PROTECTION SYSTEMS. ALL ABOVE GROUND STRUCTURES AND AT GRADE STRUCTURES MUST BE ADJUSTED TO NEW GRADE AT CONTRACTOR'S EXPENSE. CONTRACTOR TO NOTIFY SOUTHERN NEVADA WATER AUTHORITY DEVELOPMENT PLAN REVIEW AT (702) 862-3444 AT LEAST 48 HOURS PRIOR TO CONSTRUCTION ACTIVITY.

THIS DATA MAY BE BASED ON THE NATION GEODETIC VERTICAL DATUM OF 1928. IT IS THE ENGINEER'S RESPONSIBILITY TO ENSURE THAT THIS DATA IS COVERED TO THE APPROPRIATE DATUM BEFORE USING SAID DATA.

NO BUILDINGS, STRUCTURES, FENCES OR TREES SHALL BE PLACED UPON, OVER OR UNDER THE SNWA EASEMENT EXCEPT THAT SAID PARCEL MAY BE IMPROVED AND USED FOR STREET, ROAD OR DRIVEWAY PURPOSES AND FOR OTHER UTILITIES INSOFAR AS SUCH USE DOES NOT INTERFERE WITH ITS USE BY SNWA FOR THE PURPOSES FOR WHICH IT IS GRANTED.

SNWA APPROVAL
Cherie A. Schulte 3/28/08
SOUTHERN NEVADA WATER AUTHORITY DATE
SNWA APPROVAL IS VALID FOR ONE (1) YEAR FROM THE SIGNATURE DATE. IF CONSTRUCTION WITHIN THE EASEMENT OR RESTRICTED PIPE SAFETY ZONE IS NOT COMPLETE, PLANS MUST BE RESUBMITTED TO SNWA FOR APPROVAL.

NOTE:
SNWA FIBER OPTIC CONDUIT FOLLOWS ALONG THE 60" SNWA PIPELINE.

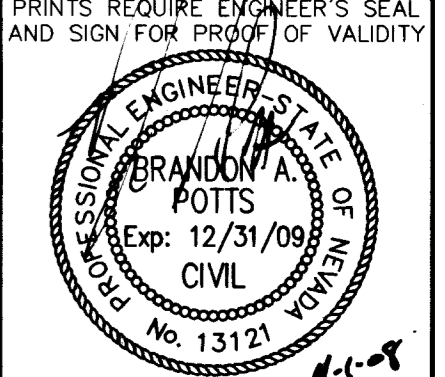
BASIS OF BEARINGS
SOUTH 89°52'09" EAST BEING THE NORTH LINE OF THE NORTHEAST QUARTER (NE 1/4) OF SECTION 29, TOWNSHIP 20 SOUTH, RANGE 61 EAST, M.D.M., CLARK COUNTY, NEVADA AS SHOWN BY MAP THEREOF ON FILE IN BOOK 48, PAGE 77 OF PLATS IN THE CLARK COUNTY RECORDERS OFFICE, CLARK COUNTY, NEVADA.

BENCHMARK
CITY OF LAS VEGAS NO. 0LV0129NNWS
RIVET & PLATE IN TOP OF CURB @ SE CORNER OF VEGAS DR. & TUMBLEWEED.
ELEV.= 642.5245 (METRIC)
2108.02 (U.S. SURVEY FEET) "NAVD 88"

SAFETY ALERT
Call Before You Dig
Call before you Dig

EASTER UTILITY SITE PLAN

PROJECT NO. 5880052-00	DATE 3/28/08
DRAWN BY: J. BROWN	CHECKED BY: J. BROWN
REVISIONS:	



C4.00
17 OF 32

CENTRAL CAREER & TECH SCHOOL
@ ROBIN ST. AND VEGAS DR.

OWNER/DEVELOPER: CLARK COUNTY SCHOOL DISTRICT
CONSTRUCTION MANAGEMENT DIVISION
4828 S. PEARL STREET
LAS VEGAS, NEVADA 89121
(702) 799-9695

CivilWorks Inc
Engineering with "sensible" solutions tailored to your "specific" needs.
7625 Dean Martin Drive, Suite # 101 • Las Vegas, NV 89139-5975
Office #: (702) 876-3474 • Fax #: (702) 876-1323