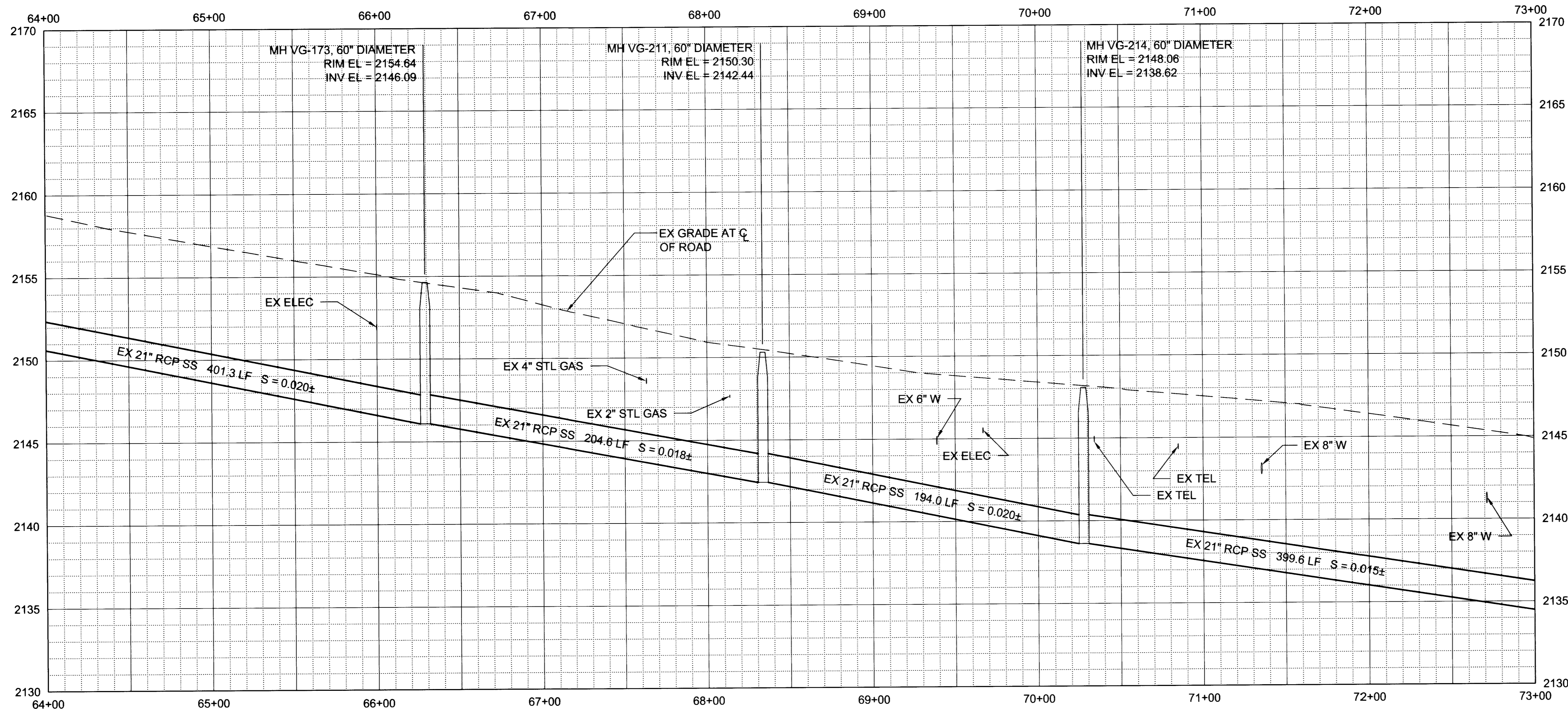
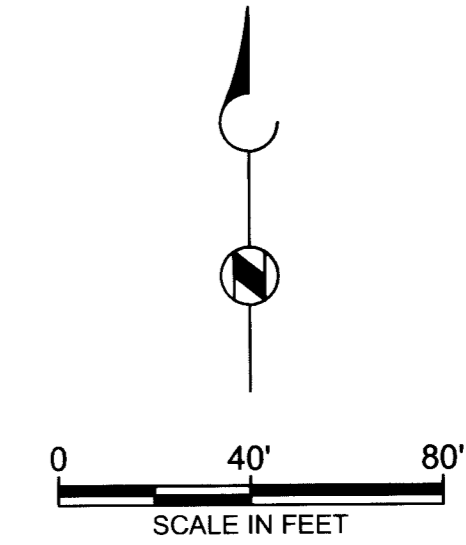


VEGAS DRIVE
PLAN
SCALE: 1" = 40'

CONSTRUCTION NOTES:

- 1) INSTALL 18" CIPP LINER IN EXISTING PIPE BETWEEN MANHOLES SHOWN.
- 2) INSTALL 21" CIPP LINER IN EXISTING PIPE BETWEEN MANHOLES SHOWN.
- 3) INSTALL 24" CIPP LINER IN EXISTING PIPE BETWEEN MANHOLES SHOWN.
- 4) REMOVE EXISTING MANHOLE AND CONSTRUCT NEW JUNCTION STRUCTURE PER DETAILS ON D-1.
- 5) REMOVE EXISTING MANHOLE AND CONSTRUCT NEW JUNCTION STRUCTURE PER DETAILS ON D-2.
- 6) REHABILITATE MANHOLE OR JUNCTION STRUCTURE WITH EPOXY COATING SYSTEM PER SPECIFICATION SECTION 691 AND DETAIL 1 ON SHEET D-6.
- 7) LOCATE BURIED MANHOLE AND ADJUST MANHOLE COVER AND FRAME TO FINISHED GRADE PER DETAIL ON D-3.
- 8) INSTALL 21" PVC PRE-LINER PER SP SECTION 690 AND LINE THROUGH EXISTING MANHOLE.



VEGAS DRIVE
PROFILE
SCALE: HORIZ 1" = 40'
VERT 1" = 4'

NOTE: CALL SOUTHWEST GAS AT 1-702-365-2296 FOR STANDBY WHEN EXCAVATING OVER OR NEAR HIGH PRESSURE GAS LINES.

Call before you Overhead
1-702-227-2929

Call before you Dig
Avoid cutting underground utility lines. It's costly.

1-800-227-2800
OR
1-702-455-7544

DATE	
REVISIONS	
LINE IS 2 INCHES AT FULL SIZE (IF NOT 2" SCALE ACCORDINGLY)	
DESIGNED: O. FURLAN	
DRAWN: L. OLIVARES	
CHECKED: H. STEED	
CHECKED: R. GABRIEL	
BROWN AND CALDWELL 4425 W. SPRING MOUNTAIN ROAD, SUITE 225 LAS VEGAS, NEVADA 89102 (702) 938-4080	
SUBMITTED: _____ DATE: _____	PROJECT MANAGER: _____ DATE: _____
APPROVED: _____ DATE: _____	APPROVED: _____ DATE: _____
CITY OF LAS VEGAS - DEPARTMENT OF PUBLIC WORKS	CORAN/ RANCHO/ VEGAS SEWER REHABILITATION
VEGAS DRIVE PLAN AND PROFILE	STATION 64+00 TO STATION 73+00
DRAWING NO. C-12	16/39

HANSEN# 07-16530 307V994