

CLIENT
UHS OF DELAWARE, INC
367 SOUTH GULPH ROAD
KING OF PRUSSIA, PA 19406
610-768-3300

ARCHITECT
HKS INC. OF NEVADA
1919 MCKINNEY AVE.
DALLAS, TX 75201
214.969.5599

STRUCTURAL ENGINEER
HKS STRUCTURES
1919 MCKINNEY AVE.
DALLAS, TX 75201

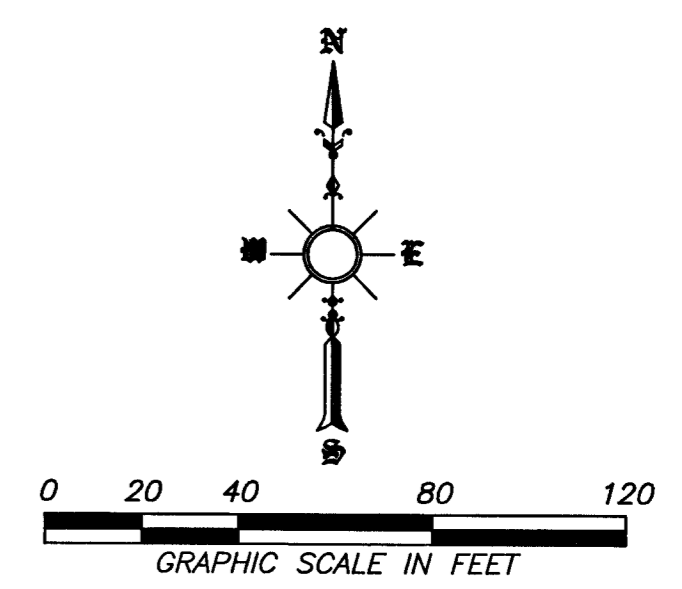
MEP ENGINEER
CCRD PARTNERS
3625 N. HALL ST., SUITE 1300 LB 139
DALLAS, TX 75219

INTERIORS CONSULTANT
DESIGN STUDIO, INC.
161 LEVERINGTON AVE.
PHILADELPHIA, PA 19127

CIVIL ENGINEER
LOPEZGARCIA GROUP
1825 MARKET CENTER, SUITE 500
DALLAS, TX 75207

FOOD SERVICE CONSULTANT
SDI, INC.
5200 DTC PARKWAY, SUITE 500
GREENWOOD VILLAGE, CO 80111

LANDSCAPE ARCHITECT
JW ZUNINO AND ASSOCIATES
3191 S. JONES BLVD.
LAS VEGAS, TN 89146



CONSTRUCTION NOTES

- (NOT ALL KEY NOTES ARE USED ON THIS DRAWING)
- CONSTRUCT "L" TYPE CURB AND GUTTER PER C.C.A.U.S.D. #216.
 - CONSTRUCT COMMERCIAL/INDUSTRIAL DRIVEWAY PER C.C.A.U.S.D. #225 WITH GEOMETRICS OF #222A. CONSTRUCT 8" CROSS GUTTER PER C.C.A.U.S.D. #228.
 - CONSTRUCT CONCRETE SIDEWALK PER C.C.A.U.S.D. #234.
 - CONSTRUCT SIDEWALK RAMP CASE II PER C.C.A.U.S.D. #235.
 - CONSTRUCT 2" UNDER SIDEWALK DRAIN PER C.C.A.U.S.D. #236.
 - CONSTRUCT ON-SITE SIDEWALK RAMP PER DETAIL ON SHEET C2.1.
 - CONSTRUCT 6" ON-SITE SIDEWALK PER DETAIL ON SHEET C2.1. (SEE CIVIL PLAN SHEET C2.1 FOR FINISHES AND JOINT LAYOUT).
 - CONSTRUCT SIX INCH (6") CONCRETE PAVEMENT PER "CONCRETE PAVEMENT DETAIL" ON SHEET C2.1.
 - CONSTRUCT THREE INCH (3") ASPHALT PAVEMENT WITH CONCRETE CURB AND GUTTER PER ASPHALT PAVEMENT DETAIL ON SHEET C2.1.
 - CONSTRUCT TWO INCH (2") ASPHALT PAVEMENT WITH CONCRETE CURB AND GUTTER PER ASPHALT PAVEMENT DETAIL ON SHEET C2.1.
 - CONSTRUCT THREE INCH (3") ASPHALT PAVEMENT PER ASPHALT PAVEMENT DETAIL ON SHEET C2.1.
 - CONSTRUCT HELIPAD PER DETAIL ON SHEET C2.1.
 - CONSTRUCT CONCRETE VALLEY GUTTER PER DETAIL ON SHEET C2.1.
 - PLANTING AREA REFER TO LANDSCAPE PLANS.
 - INSTALL PRECAST BUMPER BLOCK PER C.C.A.U.S.D. #238.
 - CONSTRUCT OUTFALL NO. 1 PER DETAIL ON SHEET C5.3.
 - CONSTRUCT OUTFALL NO. 2 PER DETAIL ON SHEET C5.3.
 - CONSTRUCT TYPE 1-A MANHOLE PER C.C.A.U.S.D. #404 ON SHEET C5.6.
 - CONSTRUCT TYPE CM DRAIN INLET PER DETAIL ON SHEET C5.6.
 - CONSTRUCT 15"x30" TYPE 3 DROP INLET PER N.D.O.T. DETAIL ON SHEET R-4.3.1.
 - CONSTRUCT ADS AREA DRAIN PER DETAIL ON SHEET C5.5.
 - CONSTRUCT CONCRETE FLUME PER DETAIL ON SHEET C5.5.
 - INSTALL ADS FLARED END SECTION PER DETAIL ON SHEET 5.5.

LEGEND

- PROP. 5' CONTOUR
- PROP. 1' CONTOUR
- EX. 5' CONTOUR
- EX. 1' CONTOUR
- PROP. ASPHALT PAVING
- PROP. CONCRETE PAVING
- EX. TOP OF CURB
- HIGH POINT
- BOTTOM OF WALL
- TOP OF SIDEWALK
- TOP OF PAVEMENT
- FINISHED GRADE
- FLOWLINE

NOTES

1. REFER TO GEOTECH RPT FOR GRADING
2. REFER TO LANDSCAPE PLANS FOR GROUNDCOVER

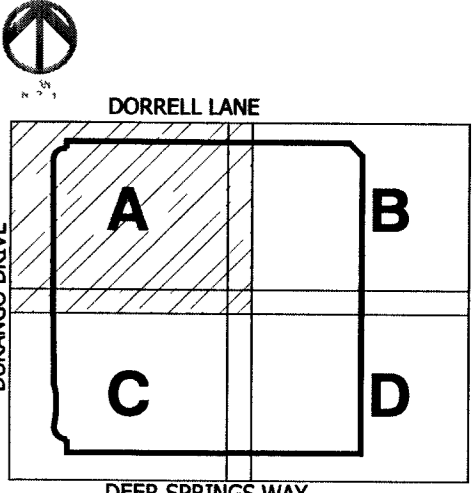
BASIS OF BEARING

THE BASIS OF BEARING IS A LINE BETWEEN THE N1/4 COR. OF SEC. 20, T. 19 S., R. 60 E., M.D.M., AND THE E1/16 COR. OF SAID SEC. 20, AS SHOWN ON EXHIBIT B OF DOC. 20030131:03151, WHICH IS THE DEDICATION OF ELKHORN ROAD, WHICH BEARS S 89°42'15" E.

CLV BENCHMARK #BLV90-2086
RIVET & PLATE IN CONCRETE CYLINDER NE CORNER OF EL CAPITAN & DORRELL
ELEVATION: 788.9015 METERS, 2588.25 FEET

| REV. | DESCRIPTION: | DATE: | BY: |
|------|------------------------------------|---------|-----|
| 1 | REVISED HELI PAD | 4/5/13 | RC |
| 2 | REVISED DRIVEWAY (CLV 107V-4300-P) | 2-10-06 | RC |

KEY PLAN

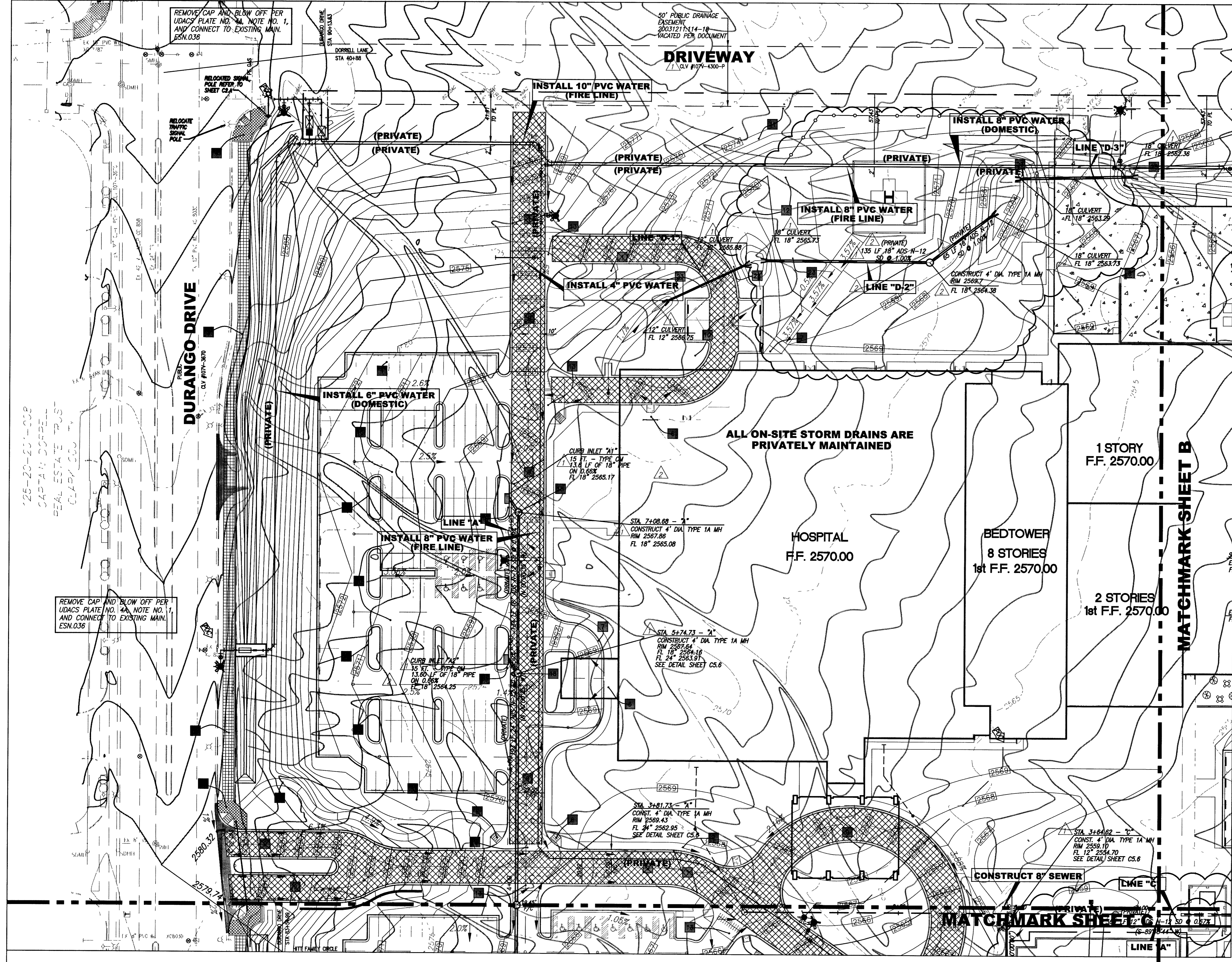


DATE
20 Jun 05

BID/PERMIT ISSUE
20 JUN 05
CITY OF LAS VEGAS - CIVIL REVIEW
15 SEPT 05
FINAL SUBMITTAL
31 OCT 05
AS NOTED TO SURVEYOR REVISIONS
30 MARCH 06

STORM SEWER PLAN

SHEET NO.
C5.A
SHEET NO. 19 OF 43
RELOT
107V4516



CAUTION TO CONTRACTOR
THE CONTRACTOR SHALL BE RESPONSIBLE TO INVESTIGATE AND VERIFY THE ACTUAL LOCATION AND DEPTH OF ALL EXISTING UNDERGROUND FACILITIES AT LEAST 48 HOURS IN ADVANCE OF THE PERFORMANCE OF ANY WORK.

DESCRIPTION OF REVISIONS:
STORM DRAIN D-1 & D-2 WAS REVISED AT AMBULANCE ENTRY. CONSTRUCTION NOTES ADDED, NOTES FOR SIGNAL POLE RELOCATION AT S.E. CORNER OF DURANGO & DORRELL ADDED. WYE CONNECTIONS REPLACED WITH MANHOLES. INLET TYPES CHANGED AND IDENTIFIED.

Call before you Dig
1-800-227-2600
103951

Call before you OVERHEAD
1-702-455-7511
CLARK COUNTY TRAFFIC OPERATIONS

Call before you UnderGround
1-702-229-6611
LAS VEGAS AREA COMPUTERIZED TRAFFIC SYSTEM

204128-STM.DWG