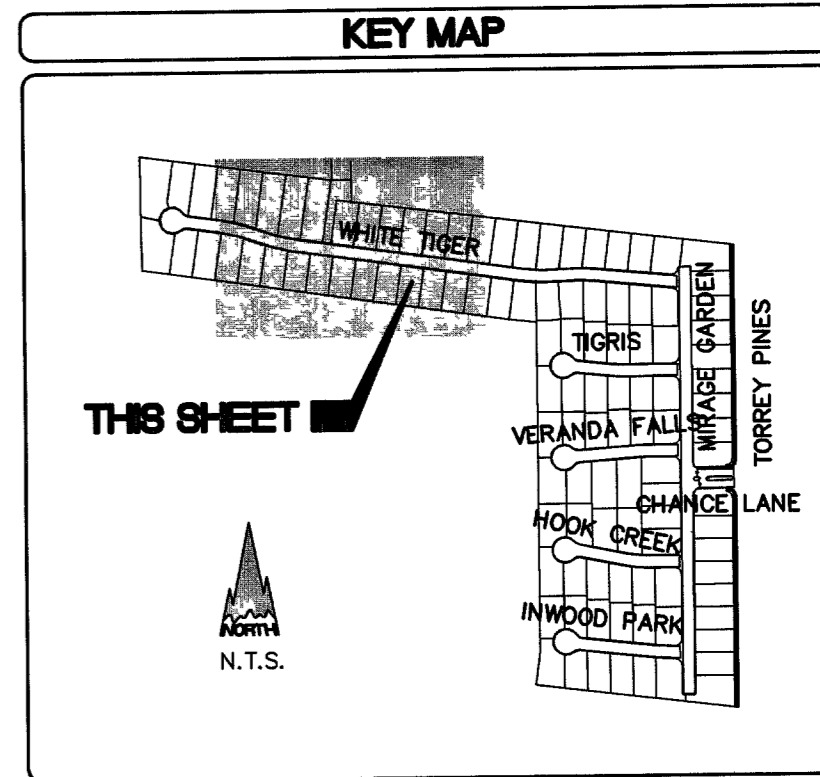
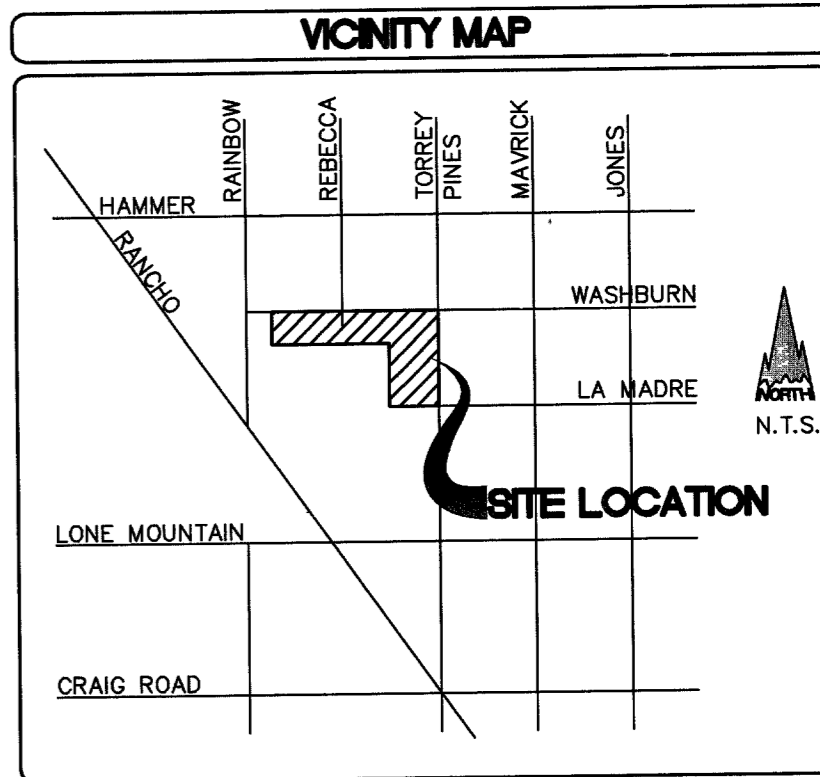
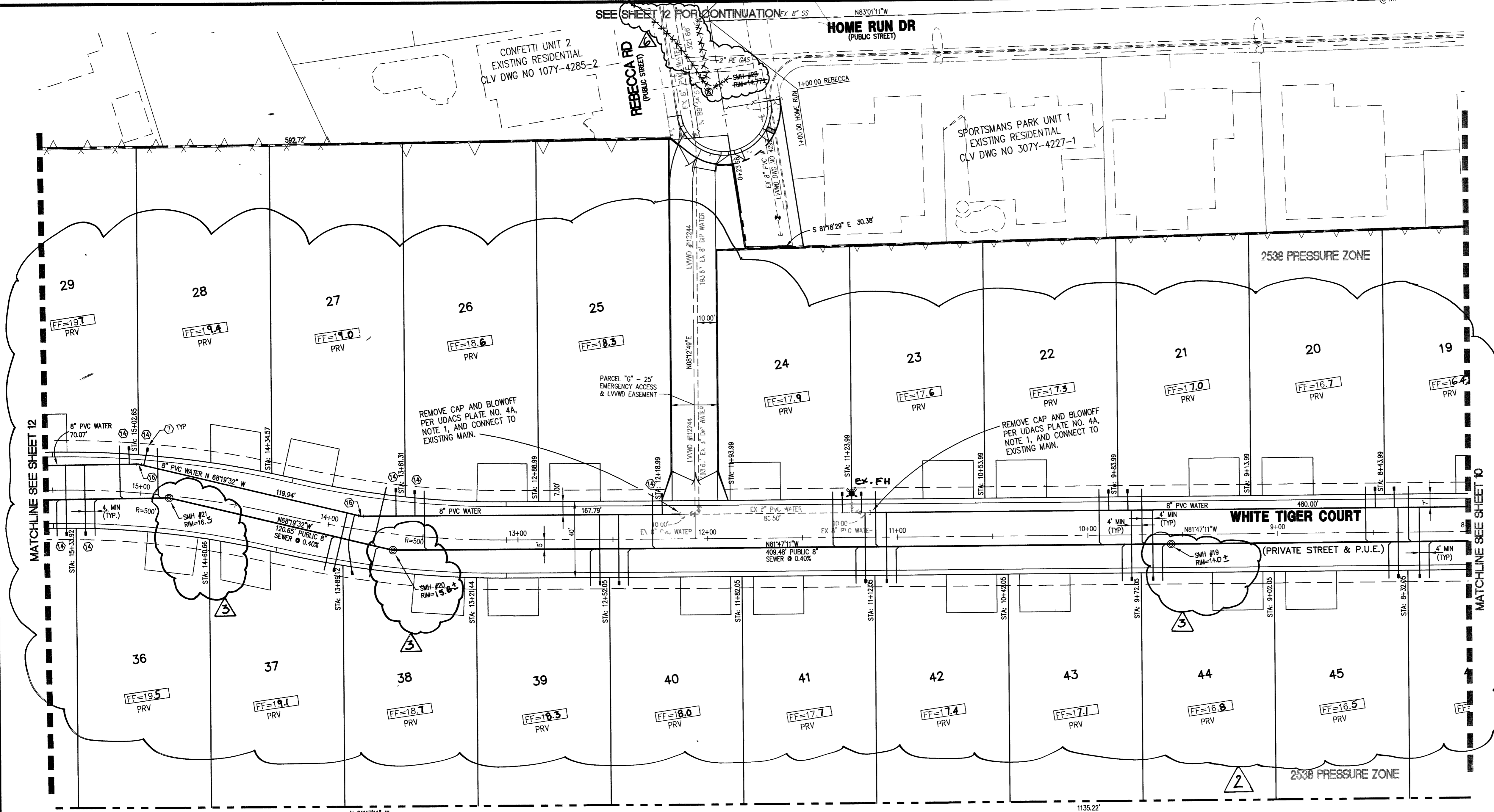


SEE SHEET 12 FOR CONTINUATION

HOME RUN DR (PUBLIC STREET)

CONFETTI UNIT 2 EXISTING RESIDENTIAL CLV DWG NO 107Y-4285-2

SPORTSMAN'S PARK UNIT 1 EXISTING RESIDENTIAL CLV DWG NO 307Y-4227-1



REVISIONS: 1. 11-07-16, 2. 11-16-16, 3. 11-16-16, 4. 11-16-16, 5. 11-16-16

DR. HORTON 6845 ESCONDIDO STREET BLDG #6, SUITE 105 LAS VEGAS, NV 89119 PHONE: (702) 435-4888 FAX: (702) 638-4700

BAVARIA ESTATES SHEET 04

DATE: SHEET: UTILITY/STREETLIGHT PLAN 11 OF 28 PROJECT NO: LM050301

UNDEVELOPED APN 125-35-301-014

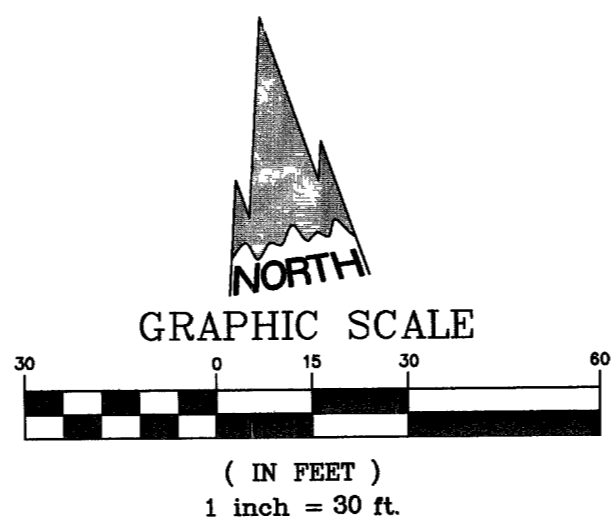
UNDEVELOPED APN 125-35-301-014

UTILITY LEGEND

WATER FITTING LEGEND

Table with utility symbols and descriptions: BOUNDARY, CENTER LINE & STATION, RIGHT-OF-WAY, LOT LINE, WATER MAIN, WATER LATERAL, EXISTING WATER MAIN, EXISTING GAS MAIN, SEWER MAIN, SEWER LATERAL, EXISTING SEWER MAIN, STORM DRAIN MAIN, STORM DRAIN LATERAL, EXISTING STORM DRAIN, BACK OF CURB, FACE OF CURB, LIP OF GUTTER, EDGE OF PAVEMENT, PRESSURE REDUCING VALVE, FIRE HYDRANT, 2" BLOW-OFF, GATE VALVE, WATER METER, PIPE FITTINGS, SEWER MANHOLE, STORM DRAIN MANHOLE, 100W STREET LIGHT, 150W STREET LIGHT, 200W STREET LIGHT, 400W STREET LIGHT, PROP. SL CONDUIT, EX. SL CONDUIT, STREETLIGHT SERVICE POINT, SIDEWALK, EXISTING CURB, EDGE OF EXISTING PMNT.

Table with water fitting symbols and descriptions: 1. 8" x 8" TEE, 2. 8" GATE VALVE, 3. 6" FIRE HYDRANT ASSY. PER UDACS STD. PLATE 7 (INCLUDE GATE VALVE, TEE & LATERAL), 4. 2" BLOW-OFF ASSY. W/CAP PER UDACS STD. PLATE 4A, 5. 6" - 11/2" BEND, 6. 8" x 6" REDUCER, 7. 3/4" METER-PER UDACS STD. PLATE NO. 1D, 8. 1" METER-PER UDACS STD. PLATE NO. 1D (RR), W/ 1" RPPA PER UDACS PLATE # 11A, 9. INSTALL (2) 4" SCH. 40 IRRIGATION SLEEVES, 10. 24" x 8" TAPPING SLEEVE W/ 8" TAPPING VALVE, 11. 8" x 8" TAPPING SLEEVE W/ 8" TAPPING VALVE, 12. 6" GATE VALVE, 13. 10" x 8" M.J. TAPPING SLEEVE W/ 8" TAPPING VALVE, 14. 1" METER PER UDACS STD. PLATE NO. 1D, 15. 8" - 5" BEND, 16. 8" - 11/2" BEND, 17. 8" - 45° BEND, 18. 8" - 90° BEND.



PRIVATE STREET NOTE: ALL PRIVATE STREETS ARE P.U.E.'S, CLV PUBLIC SEWER EASEMENTS AND PUBLIC DRAINAGE EASEMENTS TO BE PRIVATELY MAINTAINED.

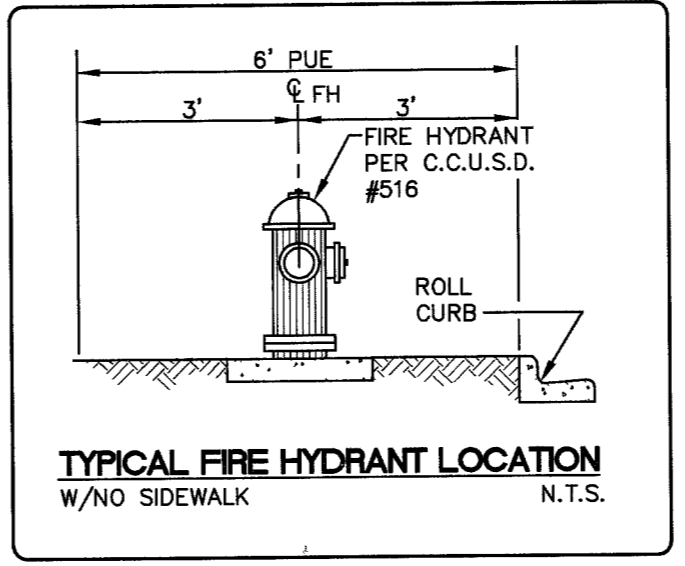
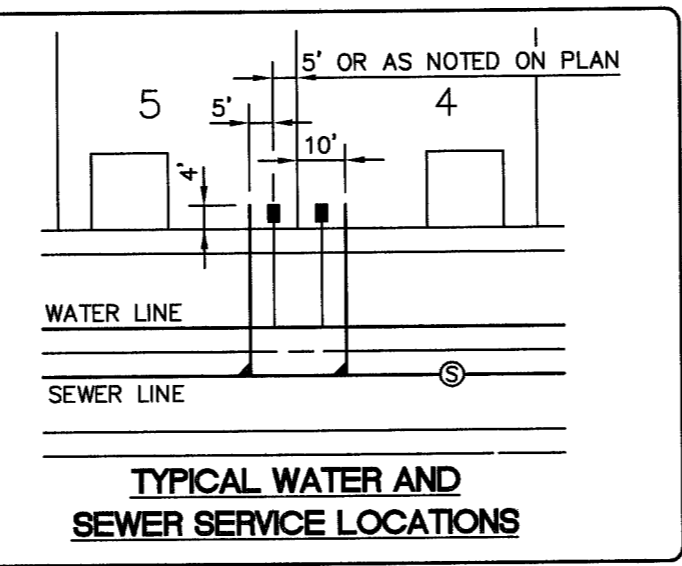
NOTE: THIS PROPERTY MAY HAVE STATIC WATER PRESSURE IN EXCESS OF 80 PSI. THE UNIFORM PLUMBING CODE REQUIRES THAT INDIVIDUAL ON-SITE (PRIVATE) PRESSURE-REDUCING VALVES BE INSTALLED WHENEVER THE PRESSURE EXCEEDS 80 PSI. PRVS ARE THE DEVELOPER'S RESPONSIBILITY, AND WILL NOT BE INSPECTED OR INCLUDED IN THE ACCEPTANCE OF LVWD FACILITIES.

NOTES

ALL SEWER/STORM DRAINS CROSSING WATER LINES MUST CONFORM TO SECTION 2.19 OF THE UNIFORM DESIGN AND CONSTRUCTION STANDARDS FOR POTABLE WATER SYSTEMS (UDACS) FOR WATER AND STORM DRAIN CROSSINGS AND CLEARANCES.

SEWER CONTRIBUTION

0.028 MGD AVERAGE DAILY FLOW 0.095 MGD PEAK FLOW



BASIS OF BEARINGS

THE EAST LINE OF THE SOUTHWEST QUARTER (SW 1/4) OF SECTION 35, TOWNSHIP 19 SOUTH, RANGE 60 EAST, M.D.M., CLARK COUNTY, NEVADA, AS SHOWN BY THAT RECORD OF SURVEY ON FILE IN FILE 40 OF SURVEYS, PAGE 74 IN THE CLARK COUNTY RECORDER'S OFFICE, CLARK COUNTY, NEVADA. SAID LINE BEARS SOUTH 00°08'24" EAST.

BENCHMARK

CLV BM 0LV90 3554 BEING A RIVET & PLATE IN TOP OF CURB 60 FT NORTH OF LONE MOUNTAIN ON EAST CURB OF TORREY PINES. ELEVATION: 2301.17 FEET/701.3985 METERS (NAVD '88 DATUM)

APPROVALS

APPROVAL: CITY OF LAS VEGAS FIRE DEPARTMENT, APPROVED FOR CONSTRUCTION, LAS VEGAS VALLEY WATER DISTRICT PROJECT #11386 DATE 6-01-06

Professional Engineer seals for Ted E. Burton and John C. Wiese, dated 02/20/07 and 10/23/06 respectively.

Call before you Dig - 1-800-227-2600

Call before you Dig - 1-702-455-7511

Call before you Dig - 1-702-227-2929

Professional Engineer seal for Ted E. Burton, dated 02/20/07.